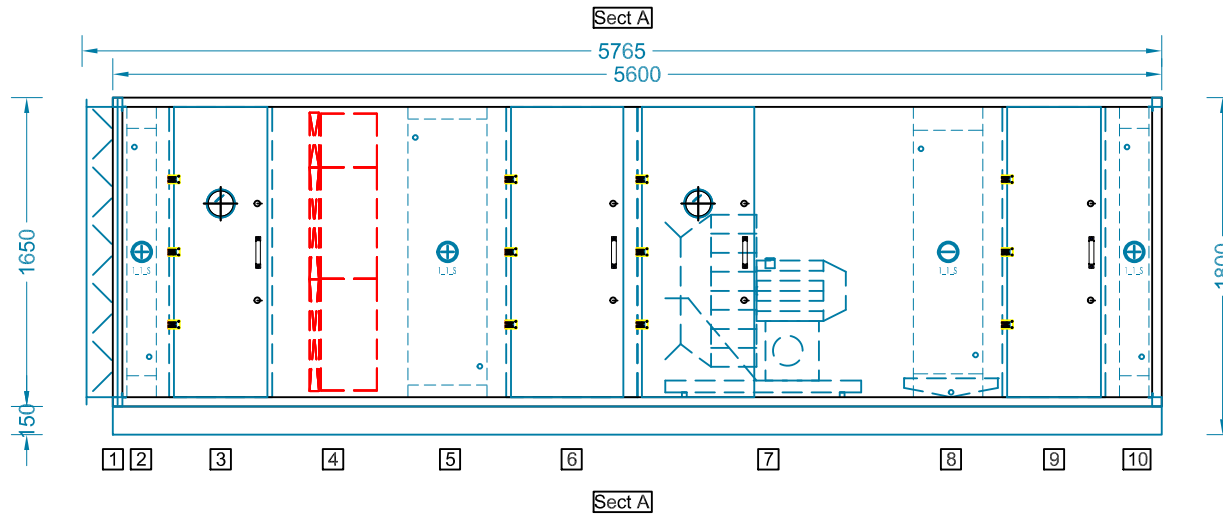


Details shown are to be used as a guide only and contract drawings giving finalised dimensions, weights, handings, intake and discharge orientations etc, will be issued upon receipt of your official order



Section A: Weight +5% = 2206Kgs
Components

1	Inlet	
2	LPHW Frost Heater	300
3	Access	550
4	Panel & Rigid Filters	650
5	LPHW Main Heater	600
6	Access	700
7	Fan	1400
8	CW Cooling Coil	550
9	Access	550
10	LPHW Main Heater	300

Section B: Weight +5% = 1580Kgs
Components

11	Fan	1400
12	Panel Filters	
13	Access	700
14	CW Cooling Coil	900
15	Access	550
16	Outlet	

ELEVATION FRONT



Dalair Limited
Southern Way, Wednesbury,
West Midlands. WS10 7BU
tel: 0121 556 9944 | fax: 0121 502 3124
email: sales@dalair.co.uk



Project Reference:

Hoxton Holborn

Unit Reference:

AHU 1

Supply Volume & External Static:

5.69 M3/s @ **500** Pa

Extract Volume & External Static:

5.69 M3/s @ **500** Pa

Model:

MA50/10/S

Date:

10 Aug 2017

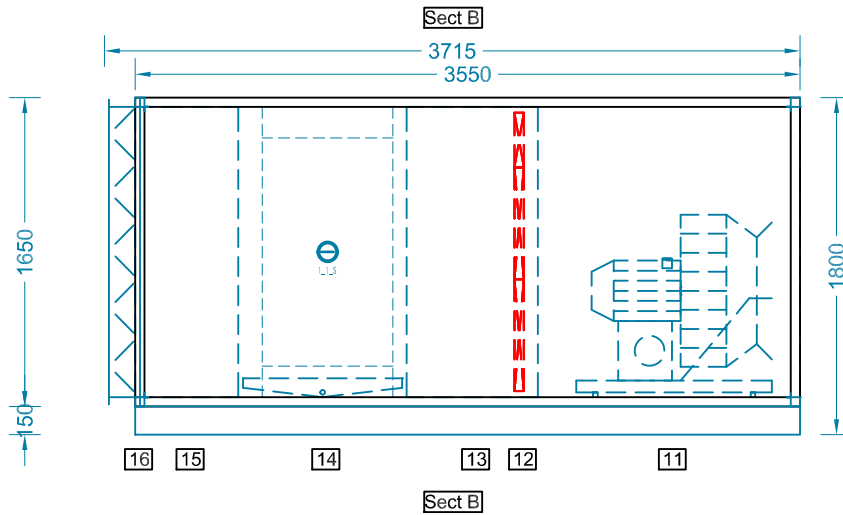
NOT TO SCALE

All dimensions shown
are in mm

Drawing Number:

170691-1-0

Details shown are to be used as a guide only and contract drawings giving finalised dimensions, weights, handings, intake and discharge orientations etc, will be issued upon receipt of your official order



Section A: Weight +5% = 2206Kgs
Components

1	Inlet	
2	LPHW Frost Heater	300
3	Access	550
4	Panel & Rigid Filters	650
5	LPHW Main Heater	600
6	Access	700
7	Fan	1400
8	CW Cooling Coil	550
9	Access	550
10	LPHW Main Heater	300

Section B: Weight +5% = 1580Kgs
Components

11	Fan	1400
12	Panel Filters	
13	Access	700
14	CW Cooling Coil	900
15	Access	550
16	Outlet	

ELEVATION BACK



Dalair Limited
Southern Way, Wednesbury,
West Midlands. WS10 7BU
tel: 0121 556 9944 | fax: 0121 502 3124
email: sales@dalair.co.uk



Project Reference:

Hoxton Holborn

Unit Reference:

AHU 1

Supply Volume & External Static:

5.69 M3/s @ **500** Pa

Extract Volume & External Static:

5.69 M3/s @ **500** Pa

Model:

MA50/10/S

Date:

10 Aug 2017

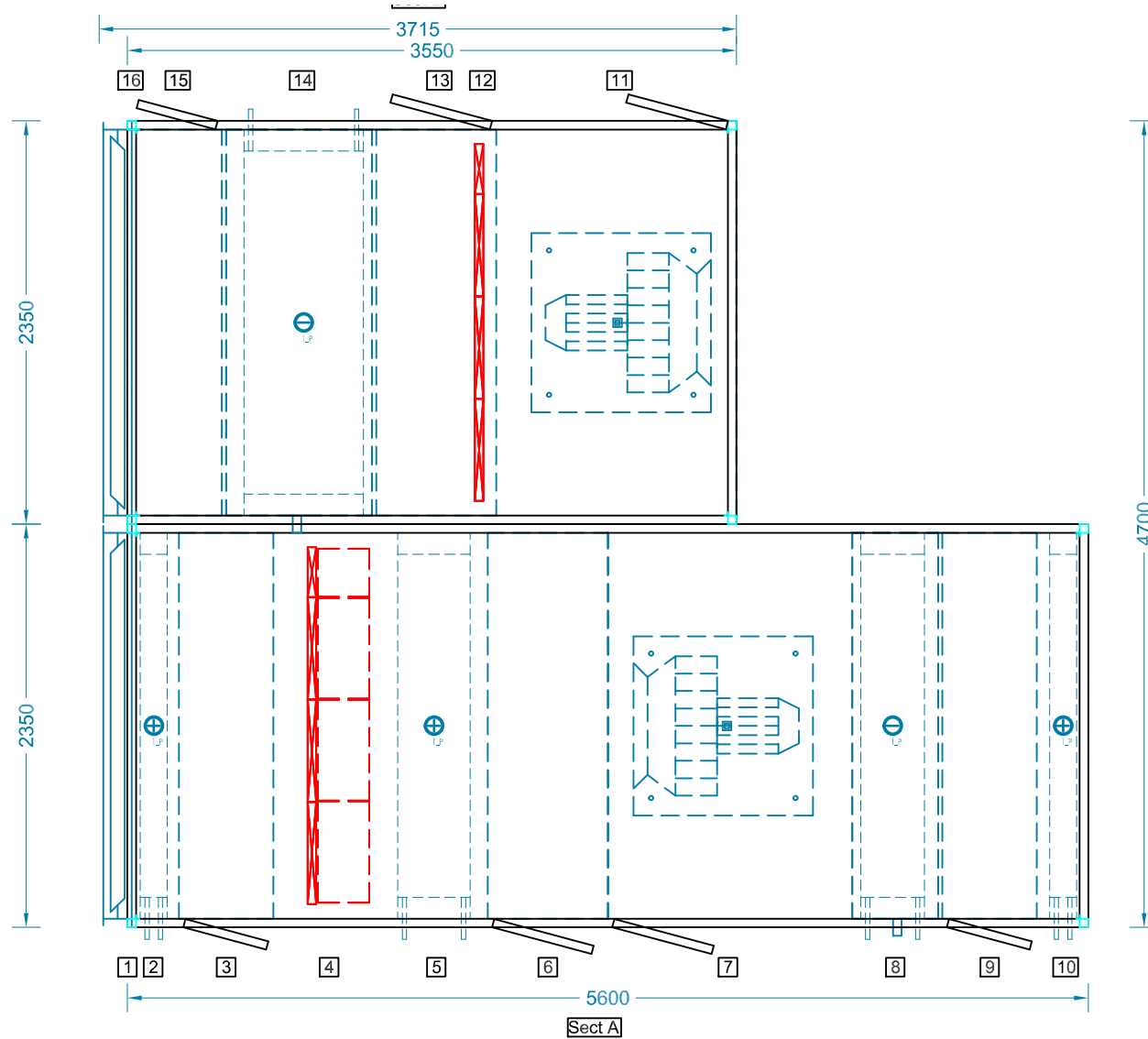
NOT TO SCALE

All dimensions shown
are in mm

Drawing Number:

170691-1-0

Details shown are to be used as a guide only and contract drawings giving finalised dimensions, weights, handlings, intake and discharge orientations etc, will be issued upon receipt of your official order



Section A: Weight +5% = 2206Kgs
Components

1	Inlet	
2	LPHW Frost Heater	300
3	Access	550
4	Panel & Rigid Filters	650
5	LPHW Main Heater	600
6	Access	700
7	Fan	1400
8	CW Cooling Coil	550
9	Access	550
10	LPHW Main Heater	300

Section B: Weight +5% = 1580Kgs
Components

11	Fan	1400
12	Panel Filters	
13	Access	700
14	CW Cooling Coil	900
15	Access	550
16	Outlet	

PLAN DECK



Dalair Limited
Southern Way, Wednesbury,
West Midlands. WS10 7BU
tel: 0121 556 9944 | fax: 0121 502 3124
email: sales@dalair.co.uk



ISO9001 • ISO14001
OHSAS18001

Project Reference:

Hoxton Holborn

Unit Reference:

AHU 1

Supply Volume & External Static:

5.69 M3/s @ **500** Pa

Extract Volume & External Static:

5.69 M3/s @ **500** Pa

Model:

MA50/10/S

Date:

10 Aug 2017

NOT TO SCALE

All dimensions shown
are in mm

Drawing Number:

170691-1-0