

Notes:

1. Do not scale off this drawing for purposes other than in connection with the planning application.
2. EPR Architects accepts no liability for use of this drawing by parties other than the party for whom it was prepared or for purposes other than those for which it was prepared.
3. The record information contained in this drawing is issued for information purpose only and is subject to confirmation on site. EPR accepts no liability for any losses however incurred arising out of or in connection with use of the information.

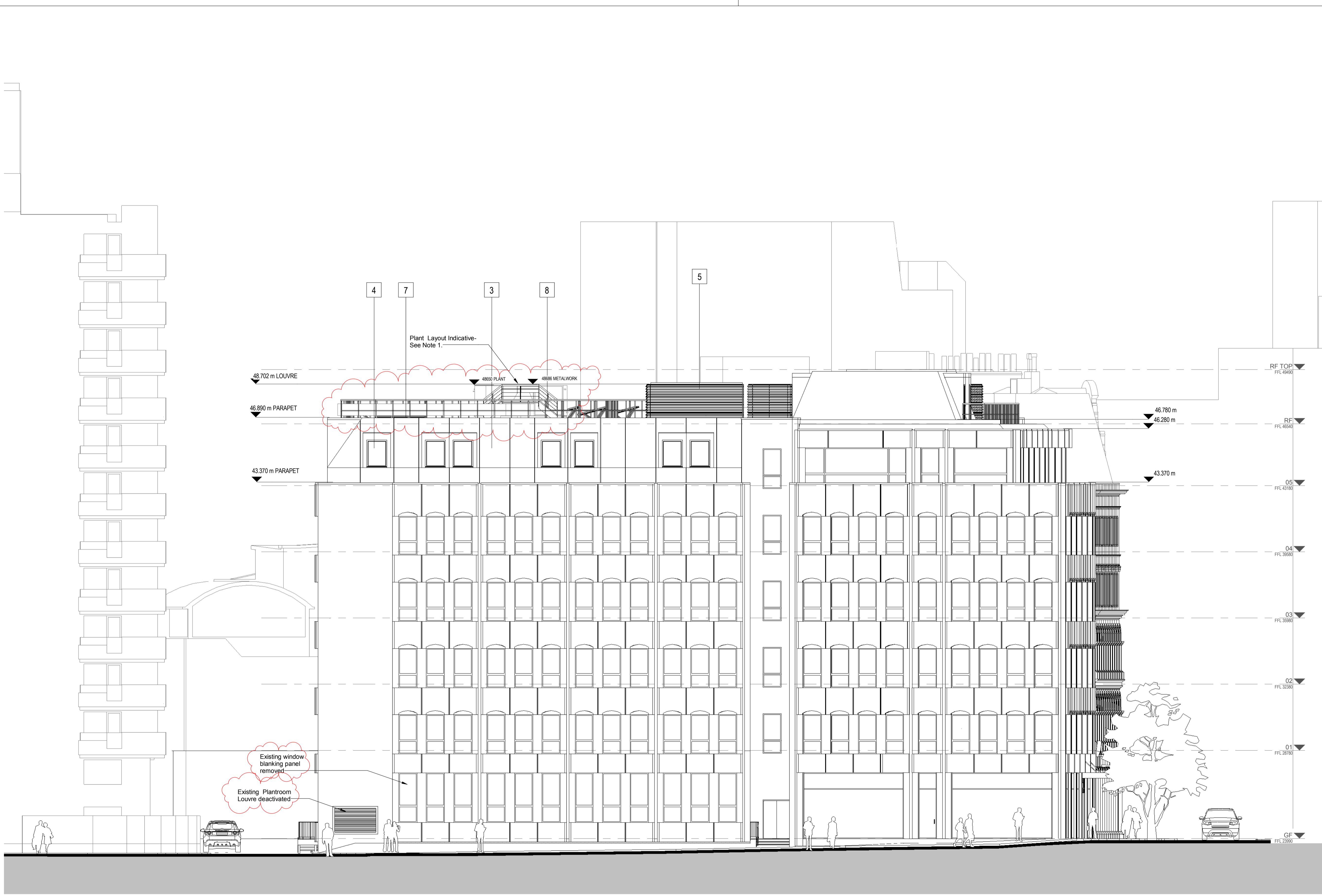
No.	Revision	Date	Initial	Chkd
6	TP Issue - Section 73	05.01.16	EB	
5	Plant Relocation Issued For Information	14.12.17	EB	
4	Issued for Information - Revisions as clouded	27.09.17	TM	
3	TP Issue North Elevation Updated	20.12.16	FV	
2	TP Issue	09.12.16	FV	
1	First Issue	18.11.16	FV	

LEGEND

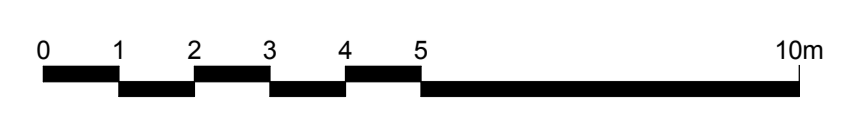
1	GRC cladding system
2	Green facade system
3	Modular metal rainscreen system
4	PPC Aluminium windows
5	Metal louvre plant screen
6	Metal folding gates
7	Metal capping
8	Metal balustrade
9	Metal door
10	Glass balustrade
11	GRP plant room (hidden behind louvre)

General Notes:

1. Final AHU selection and ventilation system distribution infrastructure sizing and routing at roof level will be subject to development by the Contractor.



1-50 Newton Street Service Yard Access Road 199 to 206 High Holborn High Holborn



PLANNING

EPR architects 30 Millbank
London SW1P 4DU
+44 (0) 20 7932 7600
www.epr.co.uk

Hoxton Hotel Extension
199-206 High Holborn London WC1V 7BD

Proposed Elevation East

Project Status 1:100@A1 18/11/16

Project No	Originator	Zone	Level	Type	Role	Number	Rev
10475 - EPR - 00	EA	DR	A	0431			6