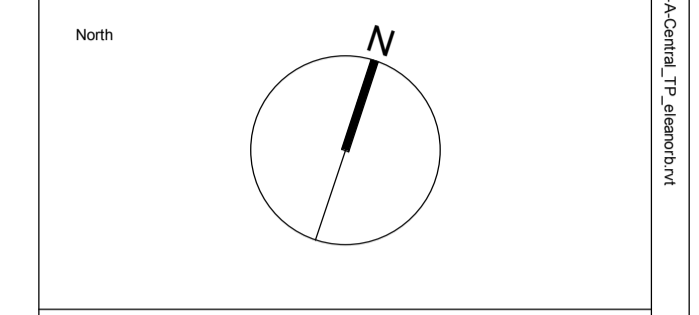
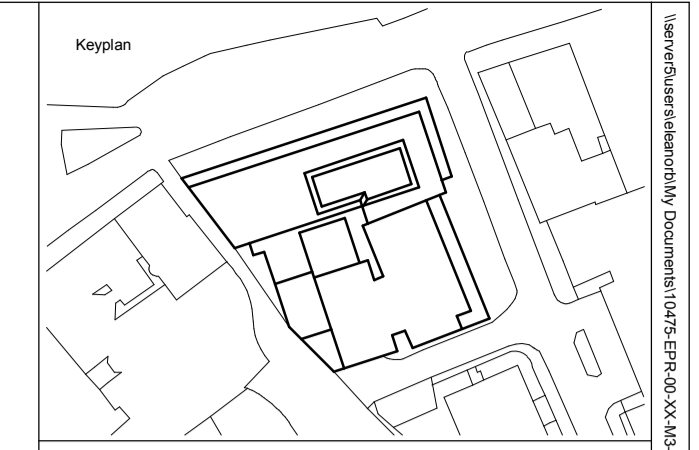
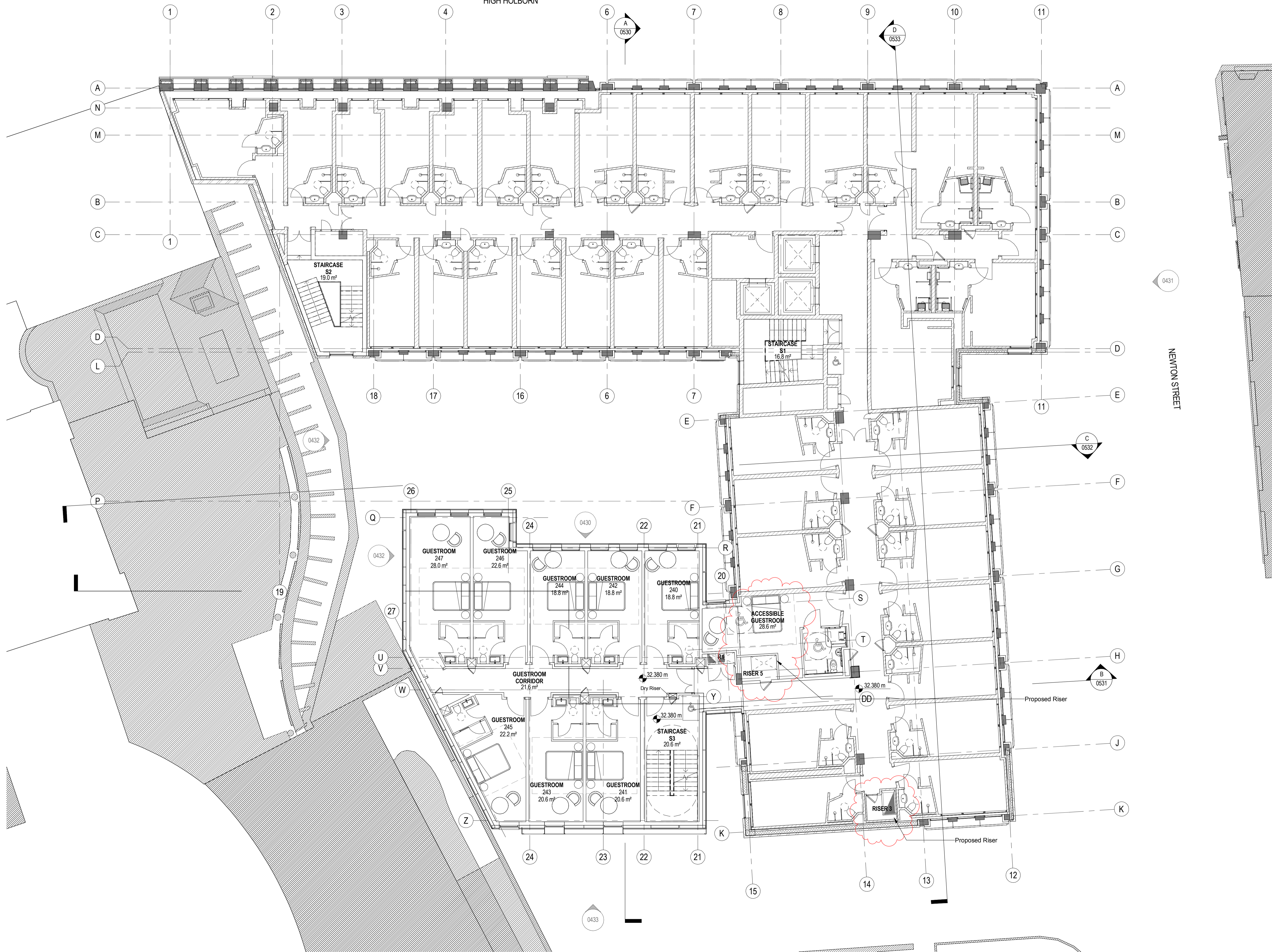


HIGH HOLBORN



**Notes:**  
 1. Do not scale off this drawing for purposes other than in connection with the planning application.  
 2. EPR Architects accepts no liability for use of this drawing by parties other than the party for whom it was prepared or for purposes other than those for which it was prepared.  
 3. The record information contained in this drawing is issued for information purposes only and is subject to confirmation on site. EPR accepts no liability for any losses however incurred arising out of or in connection with use of the information.

No.	Revision	Date	Initial	Chk'd
7	TP Issue - Section 73	05.01.16	EB	
6	Plant Relocation Issued For Information	14.12.17	EB	
5	Issued for information - Reserves as closed	27.08.17	TM	
4	TP Issue North Elevation Updated	20.12.16	FV	
3	TP Issue	09.12.16	FV	
2	Issued for information	01.12.16	FV	
1	First Issue	18.11.16	FV	

**Summary of Proposed Rooms:**  
 Level 01 : 8 Guestrooms (1 Accessible)  
 Level 02 : 8 Guestrooms (1 Accessible)  
 Level 03 : 8 Guestrooms (1 Accessible)  
 Level 04 : 7 Guestrooms (1 Accessible)  
 Level 05 : 19 Guestrooms  
 Existing Room Count : 174 (18 Accessible)  
 Rooms Lost : -4  
 Net Rooms Gain : 46

**Proposed Room count : 220 Guestrooms (22 Accessible)**  
 1. These areas have been calculated as NIA and relate to the anticipated areas of the building at the current state of the design and measured using preliminary drawings. The following factors should be considered before using these areas in any financial or other exercise:  
 - Further design development may affect the areas  
 - The building may present anomalies in relation to surveyed/drawn plans  
 - Construction tolerances may affect the areas  
 2. The record information contained in this drawing is issued for information purposes only and is subject to confirmation on site. EPR accepts no liability for any losses however incurred arising out of or in connection with the use of this information.

PLANNING

**EPR architects**  
 30 Millbank  
 London SW1P 4DU  
 +44 (0) 20 7932 7600  
 www.epr.co.uk

Hoxton Hotel Extension  
 199-206 High Holborn London WC1V 7BD

Proposed Second Floor Plan  
 Project Status: 1:100@A1 18/11/16

Project No	Originator	Zone	Level	Type	Role	Number	Rev
10475-EPR-00-02-DR-A-0232							7

