

Levitt Bernstein

ARCHITECT'S COMMENTS

- A NO FURTHER COMMENT
- B COMMENTS NOTED AND TO BE INCORPORATED PRIOR TO FABRICATION
- C SIGNIFICANT COMMENTS, RESUBMIT REVISED INFORMATION

Please do not change I or conditions of materials/quantities with the primary intent of decreasing program cost. Such changes are the purview of the architect and should be noted on the drawings. If you have any questions, please contact the architect at (301) 251-1000.

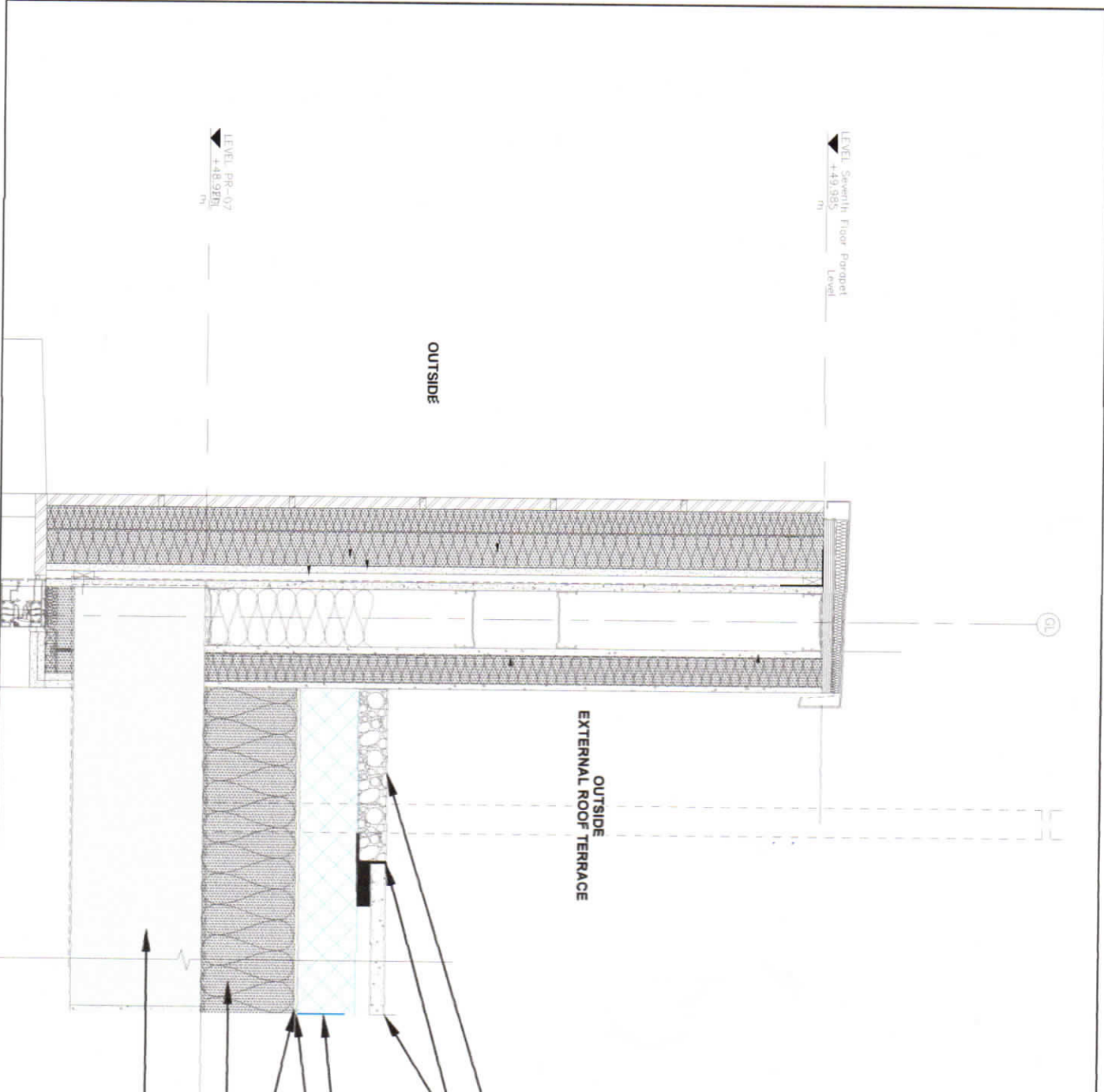
NAME: Jonathan Mann
DATE: 12.02.18

J31 SPEC - 365 for INVERTED ROOF SPEC DOESN'T STATE DETM.

Spec calls for 70mm

- 80mm Stone Ballast (Supplied By Eco)
- Slabbed Aluminum Trim (Supplied By Eco)
- Precast Concrete Parking Slab On Spacers To Walkways (Supplied By Eco)
- 100mm Blue Roof Vent Form With Filter Layer (Supplied By Eco)
- Filter Central Layer (Supplied By Eco)
- Filter Sheet (Supplied by Aesmate)
- 100mm Rigid Extruded Polystyrene Insulation (Supplied by Aesmate)

Layer thicknesses/products seem slightly different to anticipated build up. Please check Q37 and ensure that all requirements are met.



Concrete Roof Data To Structural Engineer's Specification

TITLE		Aston House		DRAWING NO	
Scale		1:10		ECO-00008-002	
Drawn by	JG	Date	31/10/17		
Checked by		Date			
Unless otherwise specified dimensions are in millimeters angles & 2° decimal dimensions & 2mm	D	17/01/18			
	B	01/01/17			
	C	07/01/17			
	AA				

