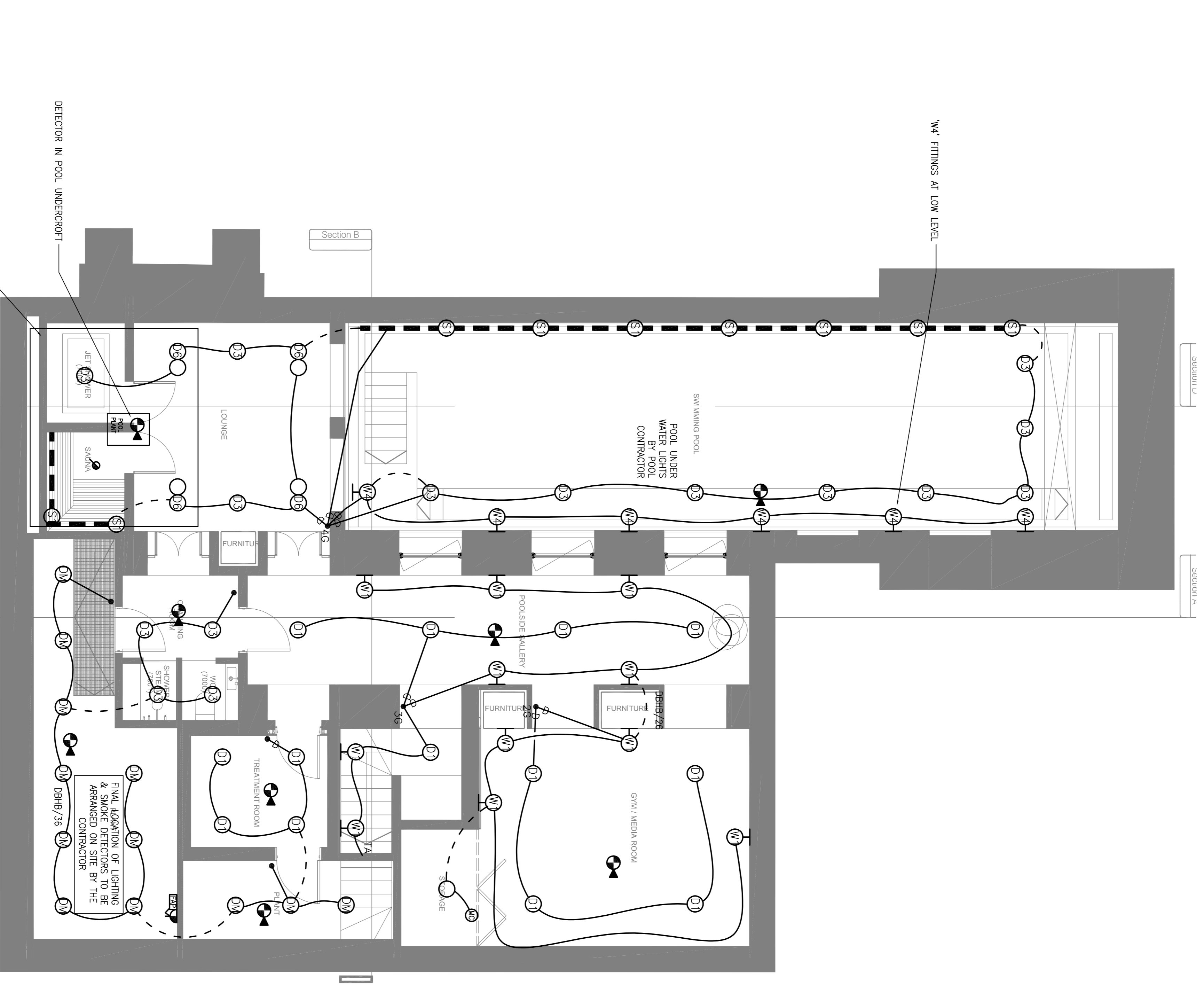


**NOTES**

THESE LAYOUTS ARE TO BE READ IN CONJUNCTION WITH ALL OTHER CONTRACT DOCUMENTS  
 LV & EIV CABLES ARE TO BE KEPT AT LEAST 150mm APART AT ALL POINTS ALONG CABLE DISTRIBUTION ROUTES



ELECTRICAL AND MECHANICAL FITTINGS AND/OR APPLIANCES, CONDUITS, PIPES, CABLES ETC. ARE INDICATED FOR TENDERING PURPOSES. GUIDANCE & COMPLETION OF INSTALLATION DRAWINGS, EXACT POSITIONS AND ROUTES SHALL BE SETTLED ON SITE IN RELATION TO OTHER SERVICES AND EXISTING AND TO BE AGREED WITH THE ARCHITECT'S DETAILING AND SERVICES CONTRACTORS. THE ARCHITECT'S DETAILS SHALL BE GIVEN PRIORITY OVER ANY OTHER DETAILS. THE FINAL POSITIONS OF LIGHTING POINTS, MECHANICAL AND ELECTRICAL FITTINGS, FIXTURES AND/OR APPLIANCES MUST BE CHECKED WITH THE CONTRACT ADMINISTRATION BEFORE PROCEEDING.

POOL UNDERCROFT ASSUME W6 'DW' FITTINGS.

REV.	DESCRIPTION	DATE	BY	CHKD	APP'D
PL2	REVISED PLANNING ISSUE	FEB'18	J.S.	M.W.	M.W.
PL1	INITIAL ISSUE (PLANNING)	FEB'18	J.S.	M.W.	M.W.
		JAN'18	JAN'18	JAN'18	JAN'18

**Edward Pearce**  
 CONSULTING ENGINEERS

Edward Pearce LLP  
 Oak Square House  
 35 Ewell Road  
 Sutton, Surrey KT6 6AF  
 Tel: 020 8390 6244  
 Fax: 020 8390 1329  
 www.edwardpearce.com

THE ESTATE OFFICE

24 HEATH DRIVE  
 LONDON  
 NW3 7SB

ELECTRICAL SERVICES  
 BASEMENT  
 LIGHTING & FIRE ALARM

Scale	1:50 @ A1	Contract Status	FOR PLANNING
Drawing No.	16/117-E07	Revision	PL2