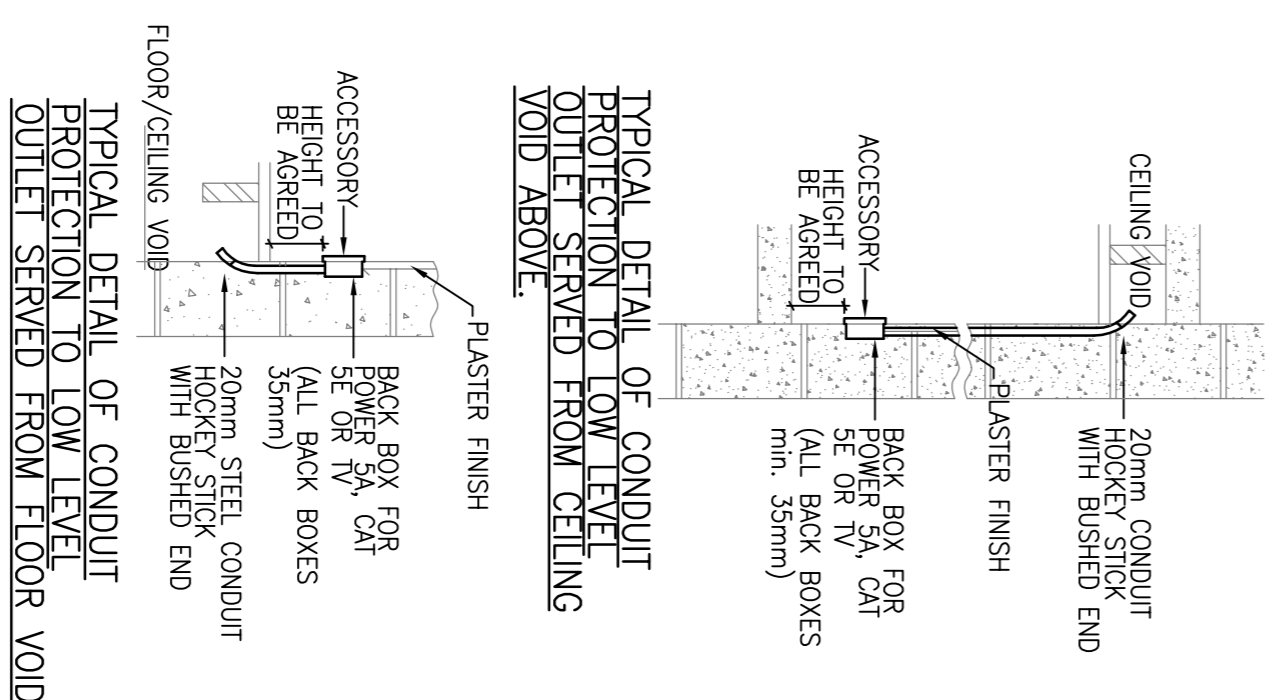
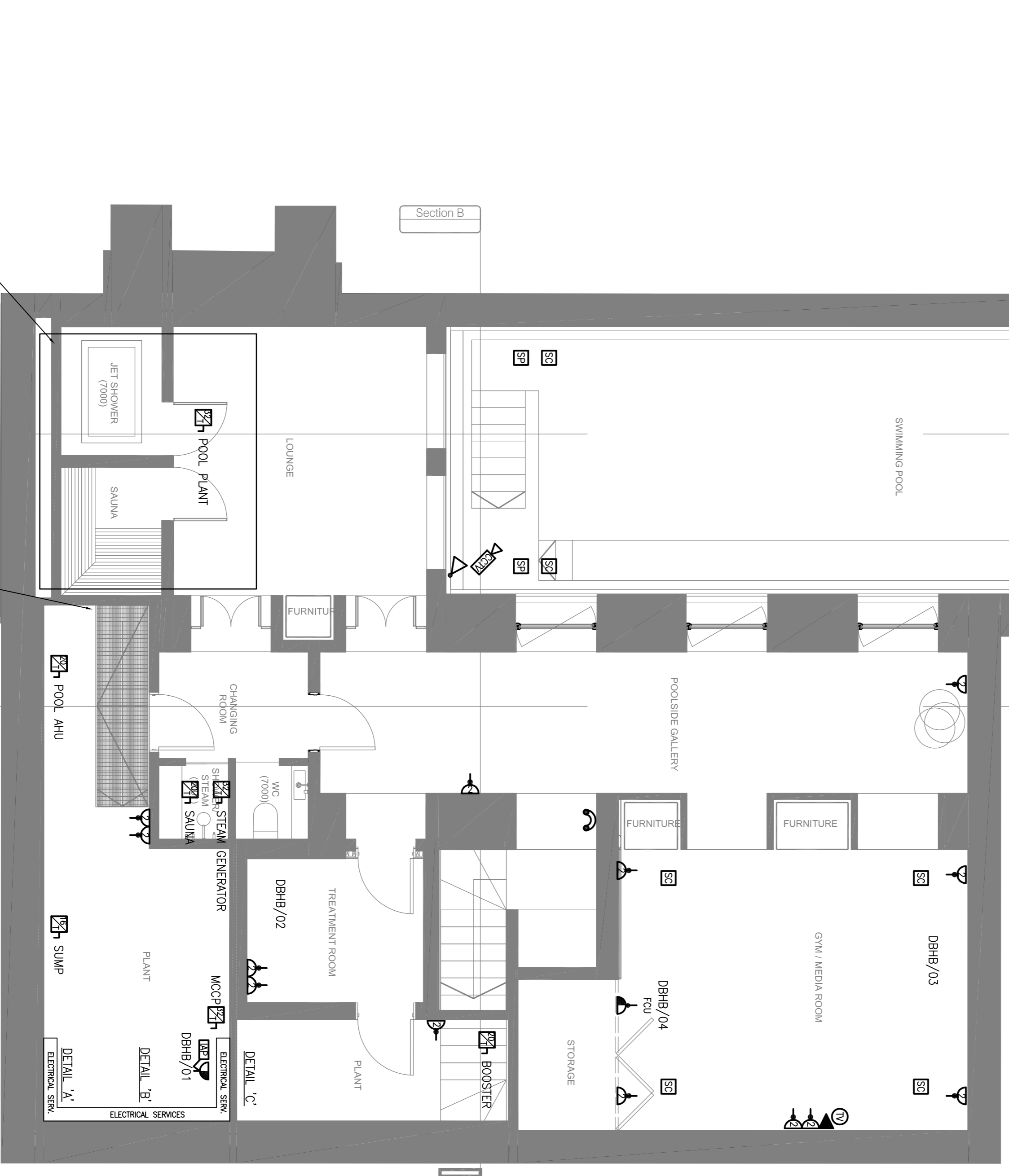
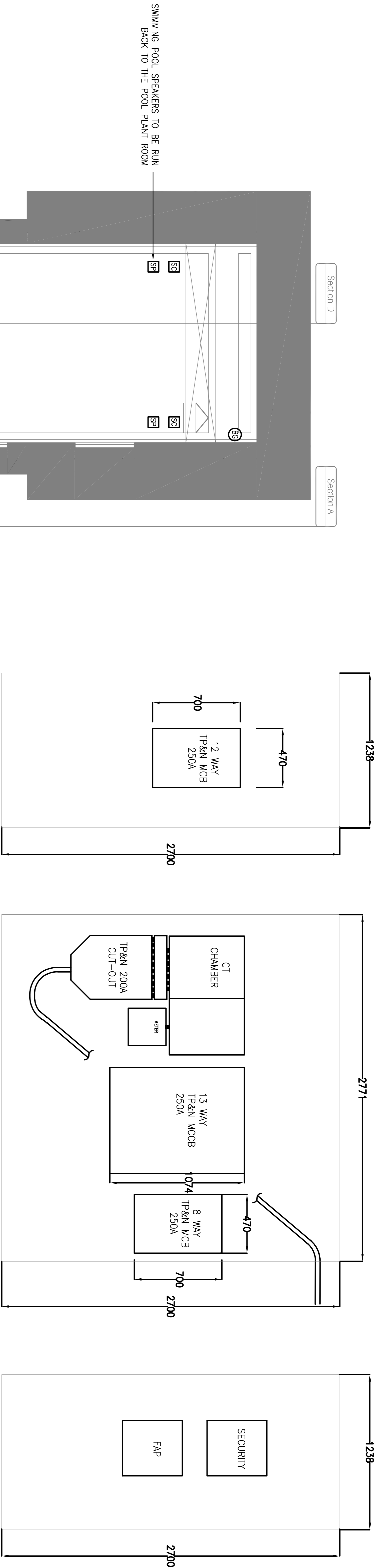


NOTES

THESE LAYOUTS ARE TO BE READ IN CONJUNCTION WITH ALL OTHER CONTRACT DOCUMENTS
 LV & EIV CABLES ARE TO BE KEPT AT LEAST 150mm APART AT ALL POINTS ALONG CABLE DISTRIBUTION ROUTES



ELECTRICAL AND MECHANICAL FITTINGS AND/OR APPLIANCES, CONTROLS, PIPES, CABLES, ETC. ARE INDICATED FOR TENDERING PURPOSES. GUIDANCE & COMPLETION OF INSTALLATION DRAWINGS, EXACT POSITIONS AND ROUTES SHALL BE SETTLED ON SITE IN RELATION TO OTHER SERVICES AND EXPOSURE AND TO THE ARCHITECT'S DETAILED DRAWINGS AND SPECIFICATIONS. THE ARCHITECT'S DETAILED DRAWINGS AND SPECIFICATIONS SHALL BE THE FINAL POSITIONS OF LIGHTING POINTS, MECHANICAL AND ELECTRICAL FITTINGS, FIXTURES AND/OR APPLIANCES MUST BE CHECKED WITH THE CONTRACT ADMINISTRATION BEFORE PROCEEDING.

<p>Edward Pearce CONSULTING ENGINEERS</p> <p>Edward Pearce LLP Oval Road 35 Oval Road Sutton, Surrey, KT6 6AF</p> <p>Tel: 020 8390 9244 Fax: 020 8390 1329 www.edwardpearce.com</p>		<p>Project Title THE ESTATE OFFICE</p> <p>24 HEATH DRIVE LONDON NW3 7SB</p>															
<p>Contract Title ELECTRICAL SERVICES BASEMENT SMALL POWER & ANCILLARIES</p>	<p>Scale 1:50 @ A1 FOR PLANNING</p>	<p>Drawing No. 16/117-E03</p>															
<p>Revision Table</p> <table border="1"> <thead> <tr> <th>REV.</th> <th>DESCRIPTION</th> <th>J.C.</th> <th>M.W.</th> <th>M.W.</th> </tr> </thead> <tbody> <tr> <td>PL2</td> <td>REVISED PLANNING ISSUE</td> <td>FEB'18</td> <td>FEB'18</td> <td>FEB'18</td> </tr> <tr> <td>PL</td> <td>INITIAL ISSUE (PLANNING)</td> <td>JAN'18</td> <td>JAN'18</td> <td>JAN'18</td> </tr> </tbody> </table>	REV.	DESCRIPTION	J.C.	M.W.	M.W.	PL2	REVISED PLANNING ISSUE	FEB'18	FEB'18	FEB'18	PL	INITIAL ISSUE (PLANNING)	JAN'18	JAN'18	JAN'18	<p>Contract No. PL2</p>	<p>Contract Status FOR PLANNING</p>
REV.	DESCRIPTION	J.C.	M.W.	M.W.													
PL2	REVISED PLANNING ISSUE	FEB'18	FEB'18	FEB'18													
PL	INITIAL ISSUE (PLANNING)	JAN'18	JAN'18	JAN'18													