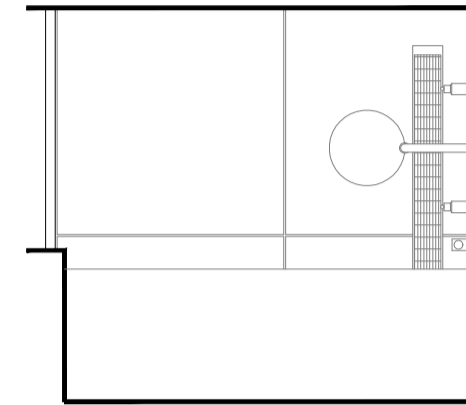


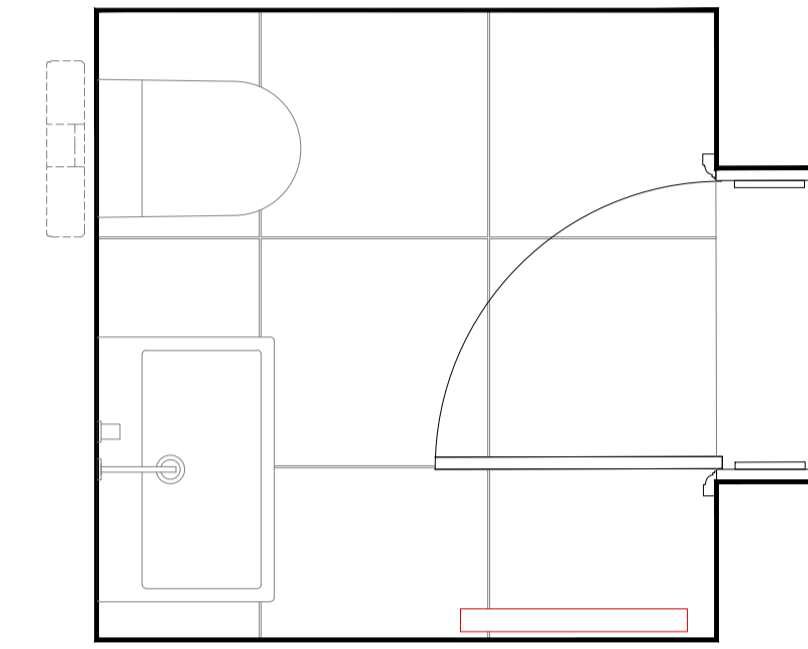
Plan  
Basement WC (7000)

Specification	
WC	Duravit ME by Starck WC, 370 x 570mm (252909) (TBC by Client)
WC Seat & Cover	Duravit ME by Starck toilet seat and cover with automatic closure (020209) (TBC by Client)
WC Frame	Geberit DuoFix frame with Sigma system (111.729.00.1)
WC Flush button	Viola push button for dual flow system (A83), incl. access panel (TBC by Client)
Washbasin	Bespoke silicone basin with overflow (TBC by Client)
Push-Open Waste	Duravit washbasin Push-open waste (005952) (TBC by Client)
Tap	Viola built-in basin tap, 150mm fixed spout, valve (911) (TBC by Client)
Shaver Socket	Sockets included in the mirror cabinets (TBC by Client)
Towel Rail	MHS Sabrina dual fuel towel radiator (TBC by Client)
Toilet roll holder	Viola toilet roll holder without back plate (1158P) (TBC by Client)
Mirror Cabinet	Kauro Edition 400 wall mounted mirror cabinet with mirror heating and adjustable light colour, 710x650x167mm (21551171301) (TBC by Client)
Floor Finish	Porcelain Tiles (PC sum £50m <sup>2</sup> supply only) (TBC by Client)
Wall Finish	Porcelain Tiles (PC sum £50m <sup>2</sup> supply only) (TBC by Client)
Lighting	By Mechanical & Electrical Engineer
Ventilation	By Mechanical & Electrical Engineer
Water consumption requirements:	
<ul style="list-style-type: none"> <li>Dual Flush WC 6.9 litre</li> </ul>	
Note:	
<ul style="list-style-type: none"> <li>Dimensions to be taken onsite prior to manufacture.</li> </ul>	



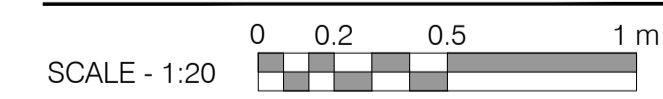
Plan  
Basement Shower/ Steam (7001)

Specification	
Jet Shower	Viola Combi-10 (hand shower and holder with hose (770), wall mounted head shower (25A); 2 Nos body jet (800K); 3 way thermostatic mixer (S401A3) (TBC by Client)
Shower Tray	CCL Linear Wet-Disc shower tray 1642, 900x900 (LWC201, Type S) (TBC by Client)
Floor Finish	Porcelain Tiles (PC sum £50m <sup>2</sup> supply only) (TBC by Client)
Wall Finish	Porcelain Tiles (PC sum £50m <sup>2</sup> supply only) (TBC by Client)
Lighting	By Mechanical & Electrical Engineer
Ventilation	By Mechanical & Electrical Engineer
Water consumption requirements:	
<ul style="list-style-type: none"> <li>Dual Flush WC 6.9 litre</li> </ul>	
Note:	
<ul style="list-style-type: none"> <li>Dimensions to be taken onsite prior to manufacture.</li> </ul>	



Plan  
Ground Floor WC (7002)

Specification	
WC	Duravit ME by Starck WC, 370 x 570mm (252909) (TBC by Client)
WC Seat & Cover	Duravit ME by Starck toilet seat and cover with automatic closure (020209) (TBC by Client)
WC Frame	Geberit DuoFix frame with Sigma system (111.729.00.1)
WC Flush button	Viola push button for dual flow system (A83), incl. access panel (TBC by Client)
Washbasin	Duravit Vero Air washbasin with overflow, 600x470 (2350800000) (TBC by Client)
Push-Open Waste	Duravit washbasin Push-open waste (005952) (TBC by Client)
Tap	Viola built-in basin tap, 225mm fixed spout, valve (921) (TBC by Client)
Shaver Socket	Sockets included in the mirror cabinets (TBC by Client)
Towel Rail	MHS Sabrina dual fuel towel radiator (TBC by Client)
Toilet Roll Holder	Viola toilet roll holder without back plate (1158P) (TBC by Client)
Mirror Cabinet	Kauro Edition 400 wall mounted mirror cabinet with mirror heating and adjustable light colour, 710x650x167mm (21551171301) (TBC by Client)
Floor Finish	Porcelain Tiles (PC sum £50m <sup>2</sup> supply only) (TBC by Client)
Wall Finish	Porcelain Tiles (PC sum £50m <sup>2</sup> supply only) (TBC by Client)
Lighting	By Mechanical & Electrical Engineer
Ventilation	By Mechanical & Electrical Engineer
Water consumption requirements:	
<ul style="list-style-type: none"> <li>Dual Flush WC 6.9 litre</li> </ul>	
Note:	
<ul style="list-style-type: none"> <li>Dimensions to be taken onsite prior to manufacture.</li> </ul>	



Rev:      Comments:      By:      Date:

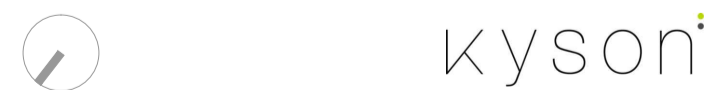
Do not scale this drawing. All dimensions must be checked on site. All rights reserved. No reproduction in any material form is permitted without consent.

**PLANNING**

Client: \_\_\_\_\_  
Project Title:  
24 Heath Drive, London, NW3 7SB

Drawing Title:  
Bathroom Details  
Basement and Ground Floor

Scale: 1:20@A1      Date: JAN 18      Drawn: KS      Checked: HV



**Studio**  
28 Scrutton Street  
London  
UK  
EC2A 4RP

T: +44(0) 20 7247 2462  
E: enquiries@kyson.co.uk  
W: www.kyson.co.uk

Project No.: 508-16      Drawing No.: 7000      Revision: -