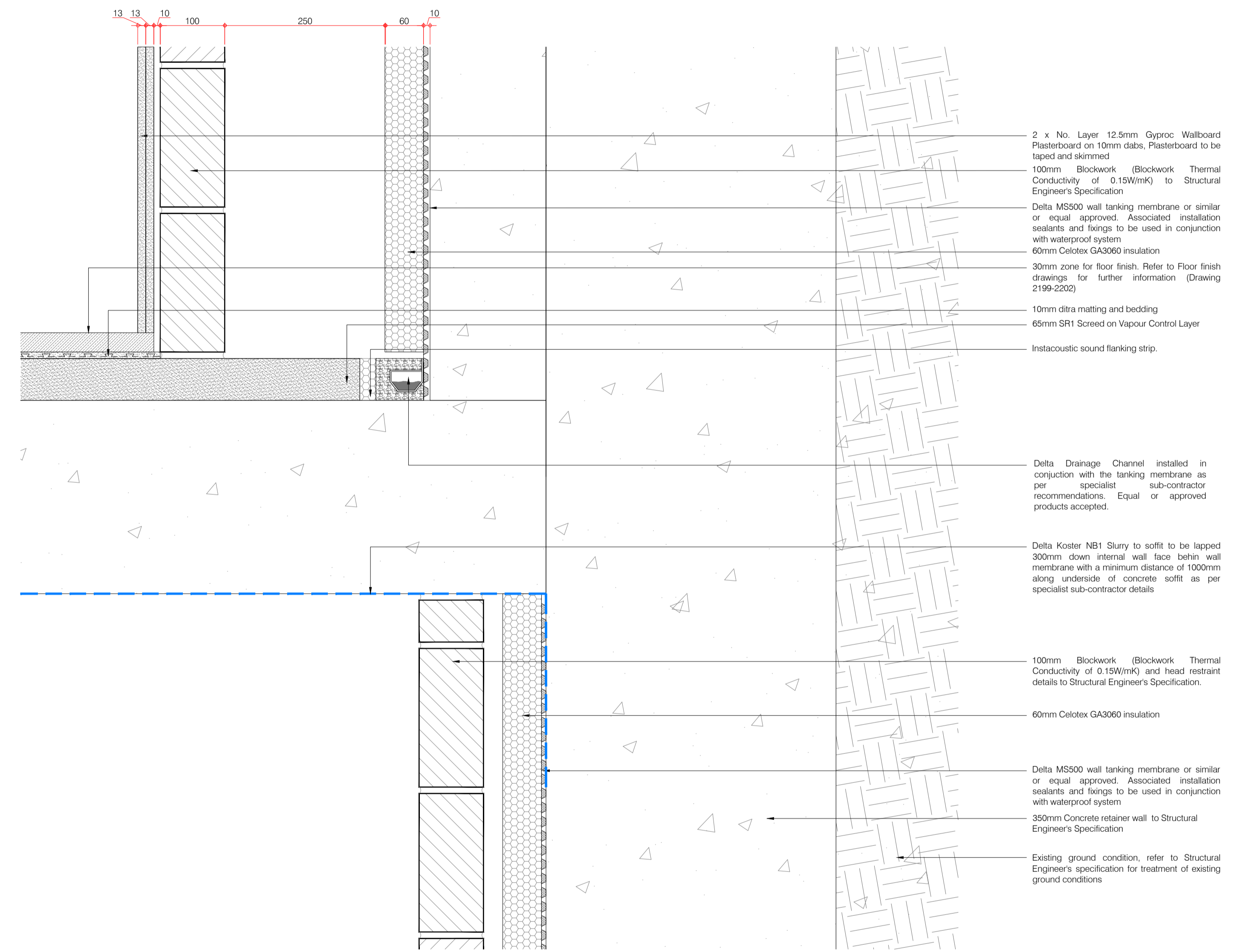


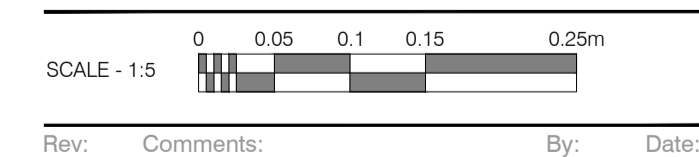
- Existing ground condition, refer to Structural Engineer's specification for treatment of existing ground conditions
- 350mm Concrete retaining wall to Structural Engineer's Specification
- 100mm Blockwork (Blockwork Thermal Conductivity of 0.15W/mK) to Structural Engineer's Specification
- 60mm Celotex GA3060 insulation
- Delta MS500 wall tanking membrane or similar or equal approved
- 1 No. Layer 12.5mm Gyproc Wallboard Plasterboard on 10mm dabs, Plasterboard to be taped and skimmed
- 10mm dtra matting and bedding
- 30mm zone for floor finish. Refer to Floor finish drawings for further information (Drawing 2199-2202)
- Instacoustic sound flanking strip.
- 65mm SR1 Screed on Vapour Control Layer
- 60mm Celotex GA3060 insulation (or similar or equal approved)
- 20mm Delta MS20 tanking membrane (or similar or equal approved)
- 300mm reinforced concrete slab to Structural Engineer's details and specification with perimeter drainage channel
- Delta Drainage Channel installed in conjunction with the tanking membrane as per specialist sub-contractor recommendations. Equal or approved products accepted.

Typical Detail
Basement - External Wall



- 2 x No. Layer 12.5mm Gyproc Wallboard Plasterboard on 10mm dabs, Plasterboard to be taped and skimmed
- 100mm Blockwork (Blockwork Thermal Conductivity of 0.15W/mK) to Structural Engineer's Specification
- Delta MS500 wall tanking membrane or similar or equal approved. Associated installation sealants and fixings to be used in conjunction with waterproof system
- 60mm Celotex GA3060 insulation
- 30mm zone for floor finish. Refer to Floor finish drawings for further information (Drawing 2199-2202)
- 10mm dtra matting and bedding
- 65mm SR1 Screed on Vapour Control Layer
- Instacoustic sound flanking strip.
- Delta Drainage Channel installed in conjunction with the tanking membrane as per specialist sub-contractor recommendations. Equal or approved products accepted.
- Delta Koster NB1 Slurry to soffit to be lapped 300mm down internal wall face behind wall membrane with a minimum distance of 1000mm along underside of concrete soffit as per specialist sub-contractor details
- 100mm Blockwork (Blockwork Thermal Conductivity of 0.15W/mK) and head restraint details to Structural Engineer's Specification.
- 60mm Celotex GA3060 insulation
- Delta MS500 wall tanking membrane or similar or equal approved. Associated installation sealants and fixings to be used in conjunction with waterproof system
- 350mm Concrete retaining wall to Structural Engineer's Specification
- Existing ground condition, refer to Structural Engineer's specification for treatment of existing ground conditions

Typical Detail
Basement - Intermediate Wall



PLANNING

Client:
Project Title:
24 Heath Drive, London, NW3 7SB
Drawing Title:
Typical Waterproofing Detail

Scale: 1:5@A1
Date: Jan 18
Drawn: BAC
Checked: AH

kyson
Studio
28 Scrutton Street
London
UK
EC2A 4RP
T: +44(0) 20 7247 2462
E: enquiries@kyson.co.uk
W: www.kyson.co.uk

Project No.: 508-16
Drawing No.: 5001
Revision: -

Do not scale this drawing. All dimensions must be checked on site. All rights reserved. No reproduction in any material form is permitted without consent.