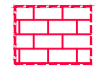
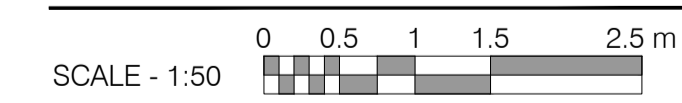
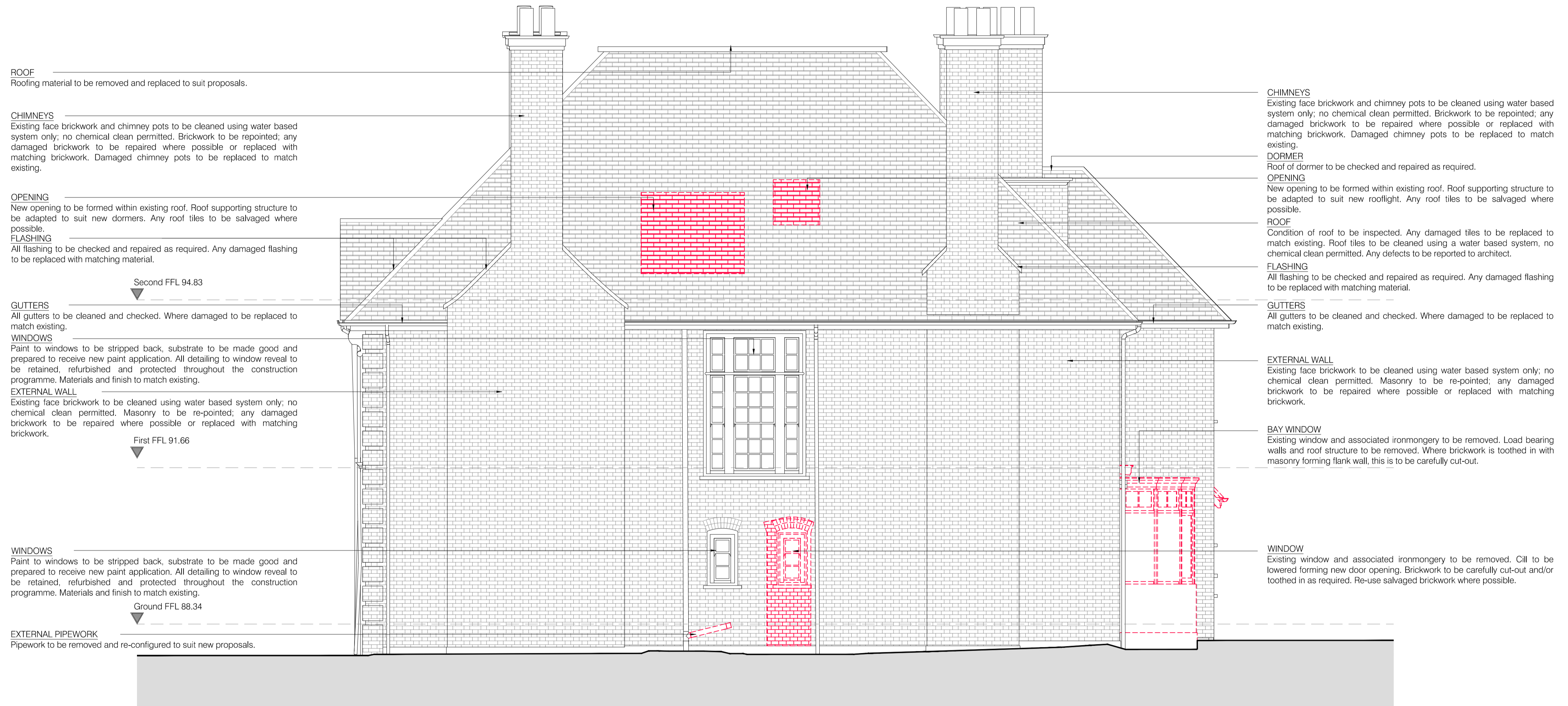


Key	
	Parts to be stripped out. Any brickwork and roof tiles to be salvaged where possible
NOTES:	
All works to be in accordance with Conservation Specifications.	
All redundant services to be removed.	
None of the existing fabric, including floor finishes, window joinery, door joinery, plasterwork, skirting and ironmongery are to be altered or removed unless otherwise shown on the drawings.	
Demolition	
Workmanship: Standard: Demolish structures in accordance with BS 6187.	
Operatives:	
- Appropriately skilled and experienced for the type of work.	
- Holding or in training to obtain relevant CITB Certificates of Competence.	
Site staff responsible for supervision and control of work: Experienced in the assessment of risks involved and methods of demolition to be used.	
Dust Control:	
General: Reduce airborne dust by periodically spraying demolition works with an appropriate wetting agent. Keep public roadways and footpaths clear of mud and debris.	
Lead dust: Submit method statement for control, containment and clean-up regimes.	
Health Hazards:	
Precautions: Protect site operatives and general public from hazards associated with vibration, dangerous fumes and dust arising during the course of the Works.	
Partly Demolished Structures:	
General: Leave in a stable condition, with adequate temporary support at each stage to prevent risk of uncontrolled collapse. Keep safe outside working hours.	
Temporary works: Prevent debris from overloading.	
Unauthorized persons: Prevent access.	
Dangerous Openings:	
General: Illuminate and protect. Keep safe outside working hours.	
Asbestos Containing Materials:	
Discovery: Give notice immediately of suspected asbestos containing materials discovered during demolition work. Avoid disturbing such materials.	
Methods for safe removal. Submit details and statutory risk assessments.	
Unforeseen Hazards:	
Unrecorded voids, tanks, chemicals, etc. discovered during demolition: Give notice.	
Methods for safe removal, filling, etc: Submit details.	
Site Condition at Completion:	
Debris: Clear away and leave the site in a tidy condition.	
Other requirements: Building occupied at all times and must be kept clear	
Recycling	
All Materials removed from site are to be recycled offsite where ever possible. This includes existing floor finishes noted for removal (i.e. existing vinyl and carpet), metal framework and concrete/blockwork.	



Rev:      Comments:      By:      Date:

**PLANNING**

Client:  
-  
Project Title:  
24 Heath Drive, London, NW3 7SB

Drawing Title:  
Strip-Out  
South-West Elevation

Scale:      Date:      Drawn:      Checked:  
1:50@A1      JAN 18      ST      HV

**kyson**

**Studio**  
28 Scrutton Street  
London  
UK  
EC2A 4RP

T: +44(0) 20 7247 2462  
E: enquiries@kyson.co.uk  
W: www.kyson.co.uk

Project No.:      Drawing No.:      Revision:  
508-16      1601      -

Do not scale this drawing. All dimensions must be checked on site. All rights reserved. No reproduction in any material form is permitted without consent.