

TP9
 LONDON BOROUGH OF CAMDEN
 TOWN AND COUNTRY PLANNING ACT 1990
 100685
 1 JAN 1992
 PLANNING PERMISSION GRANTED
 ON BEHALF OF THE COUNCIL

teg nr.: **S 9 5 5** tegn. nr.: **0 3 E**

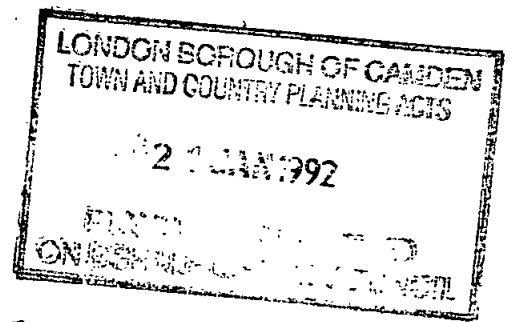
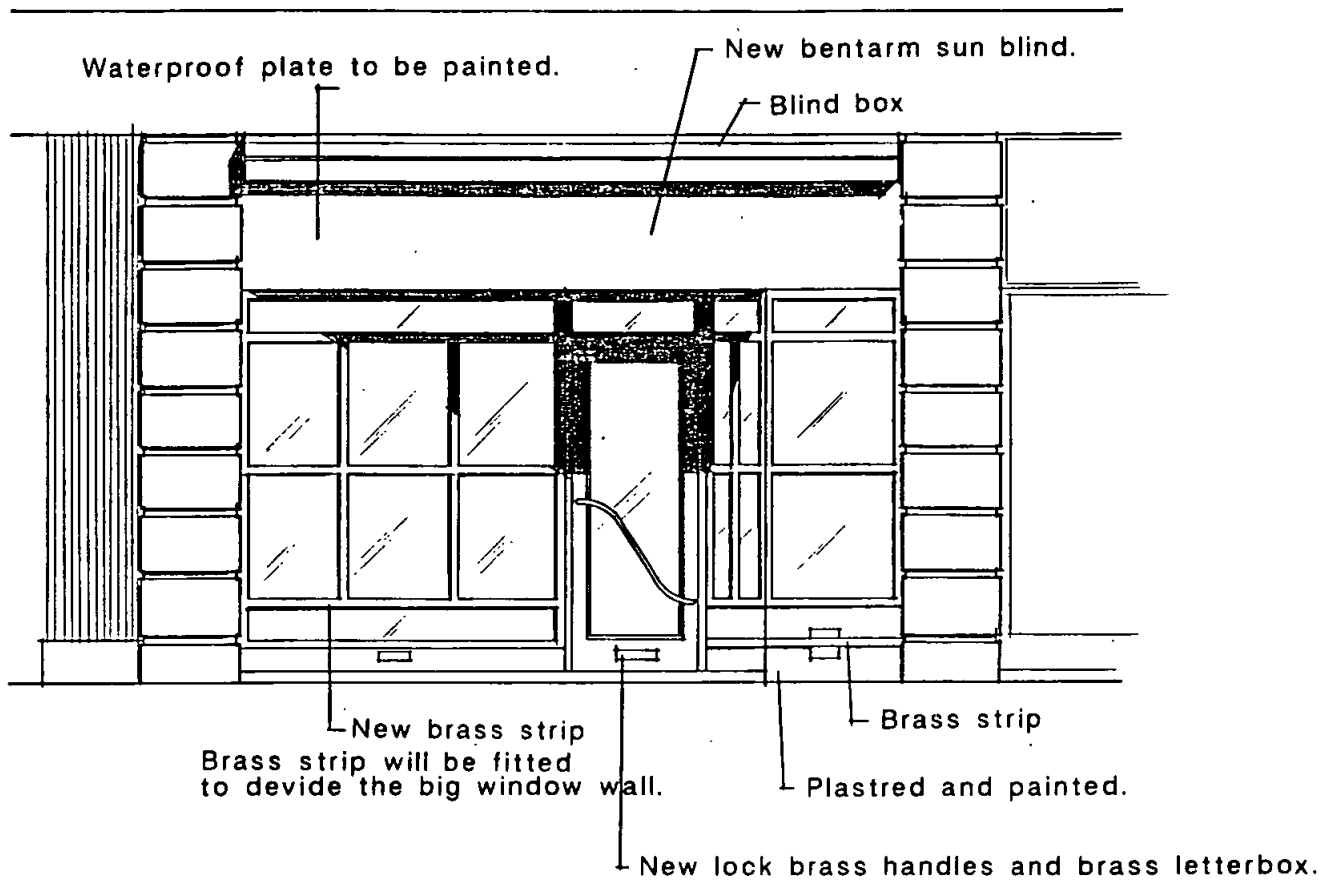
DANISH BAKERY GORUP A/S
 TESTSHOP 1ST DANISH, HIGH HOLBORN 83, LONDON

EXIST. FRONT.

dato: 26.03.91	ret.: 11.06.91	tegn. af: CMB/LLJ	mål: 1:50
----------------	----------------	-------------------	-----------



flemming bay · jørgensens tegnestue a/s
 i. c. christensens allé 1, dk-6950 ringkøbing, tlf. 97 32 12 11*



TP9 100685

sag nr.:

S 9 5 5

tegn. nr.:

1 2^E

DANISH BAKERY GROUP A/S.

TESTSHOP 1. ST. DANISH, HIGH HOLBORN 83, LONDON.

FRONT.

dato: 26.03.91

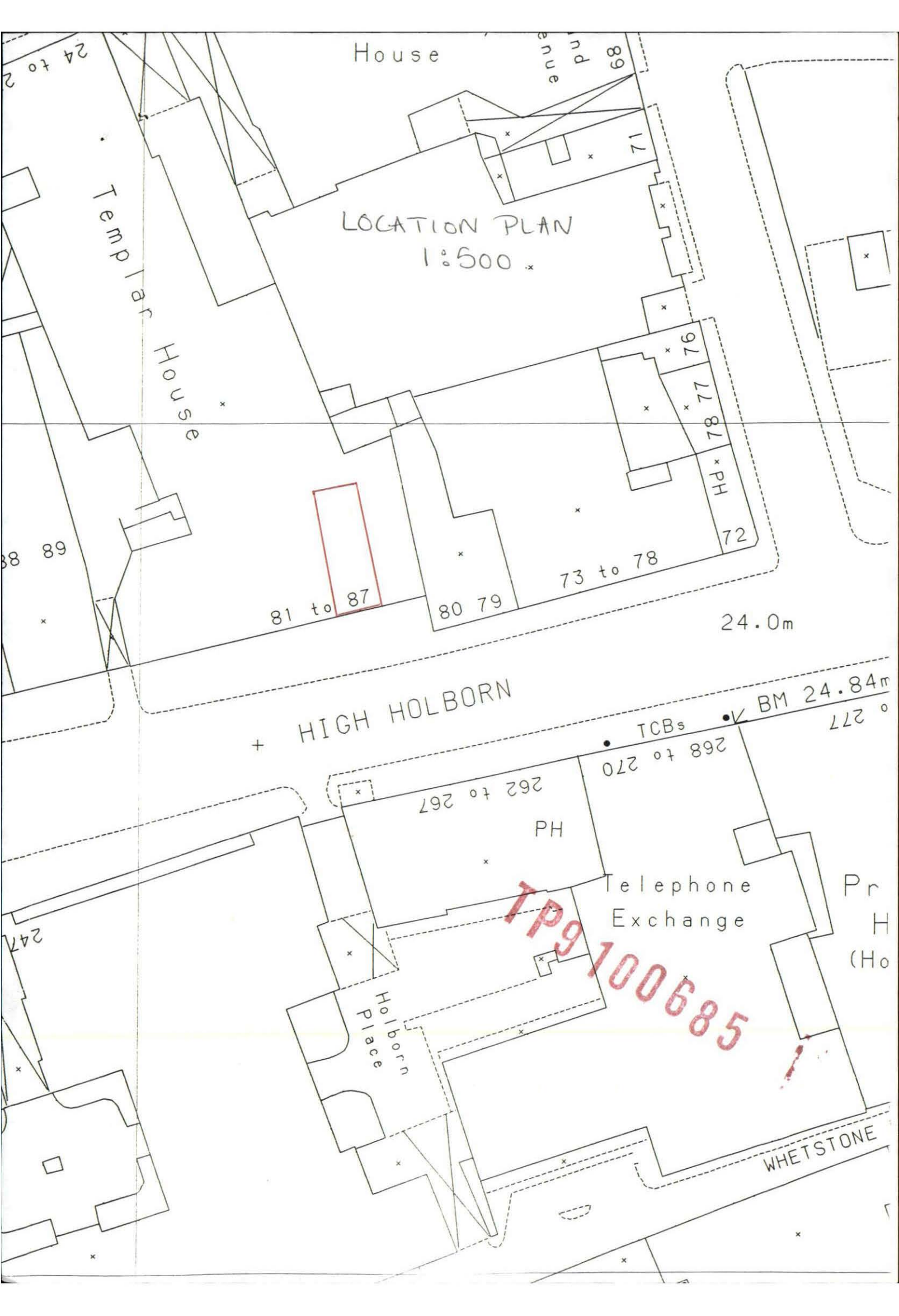
ret.: 11.06.91

tegn. af: CMB/AQS

mål: 1:50

FOU

flemming bay · jørgensens tegnestue a/s
i. c. christensens allé 1, dk-6950 ringkøbing, tlf. 97 32 12 11*



LOCATION PLAN
1:500

Templar House

House

Ind
ave
89

71

76

77

78

PH

72

73 to 78

80 79

81 to 87

24.0m

+ HIGH HOLBORN

TCBs
BM 24.84m
277

268 to 270

262 to 267

PH

Telephone Exchange

Pr
H
(Ho

Holborn
Place

TP9100685

WHETSTONE