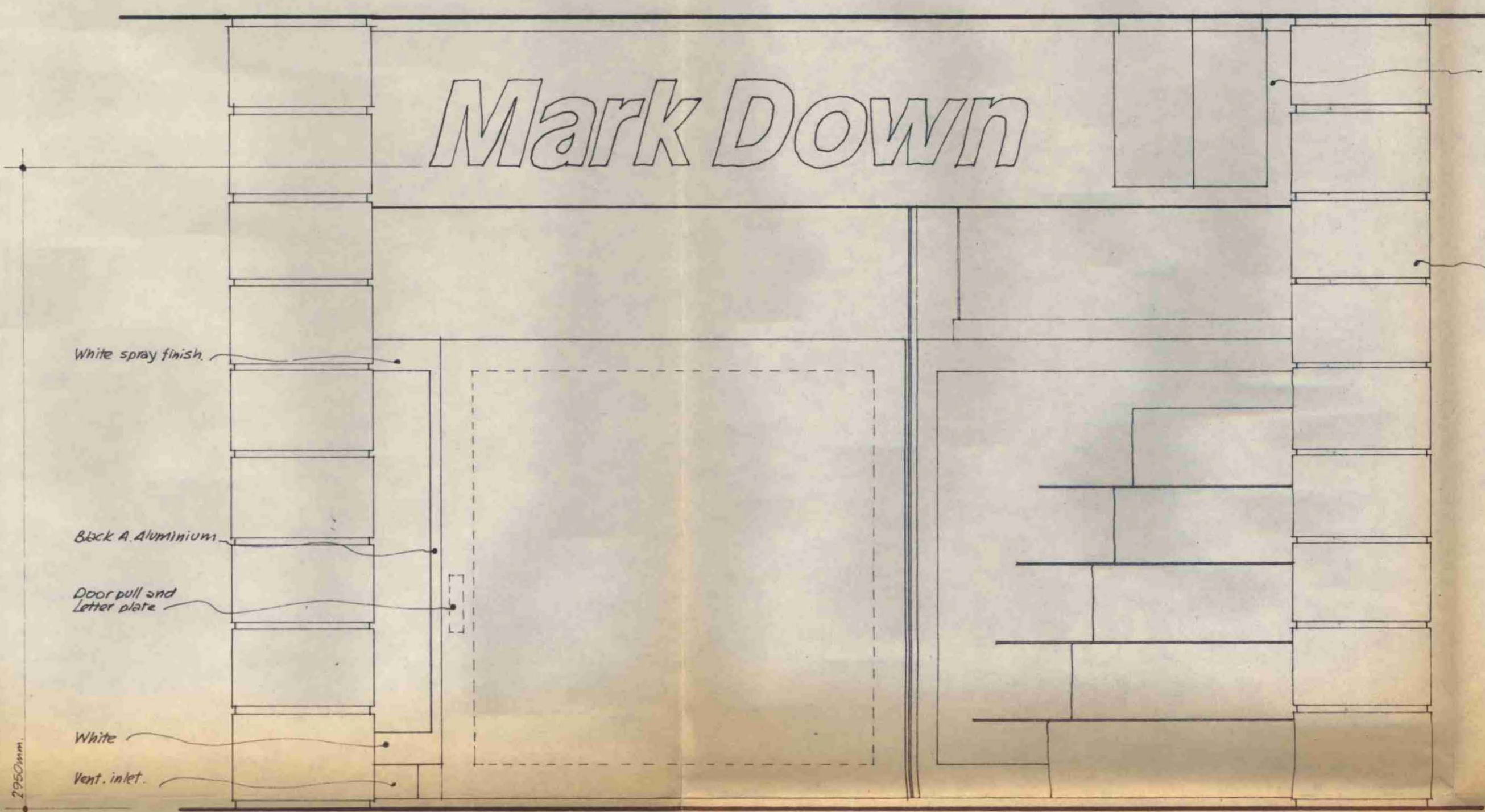
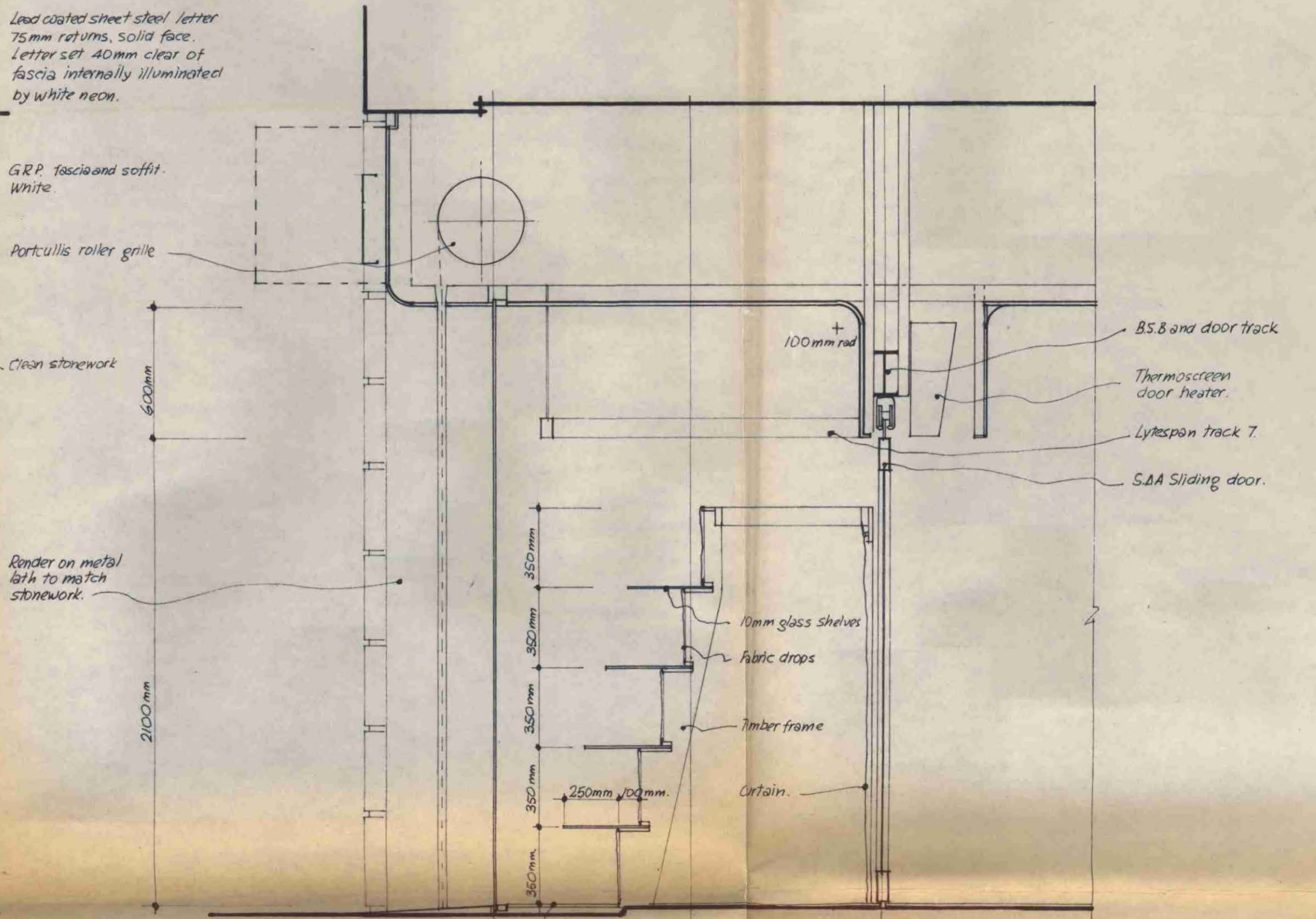


Section B-B

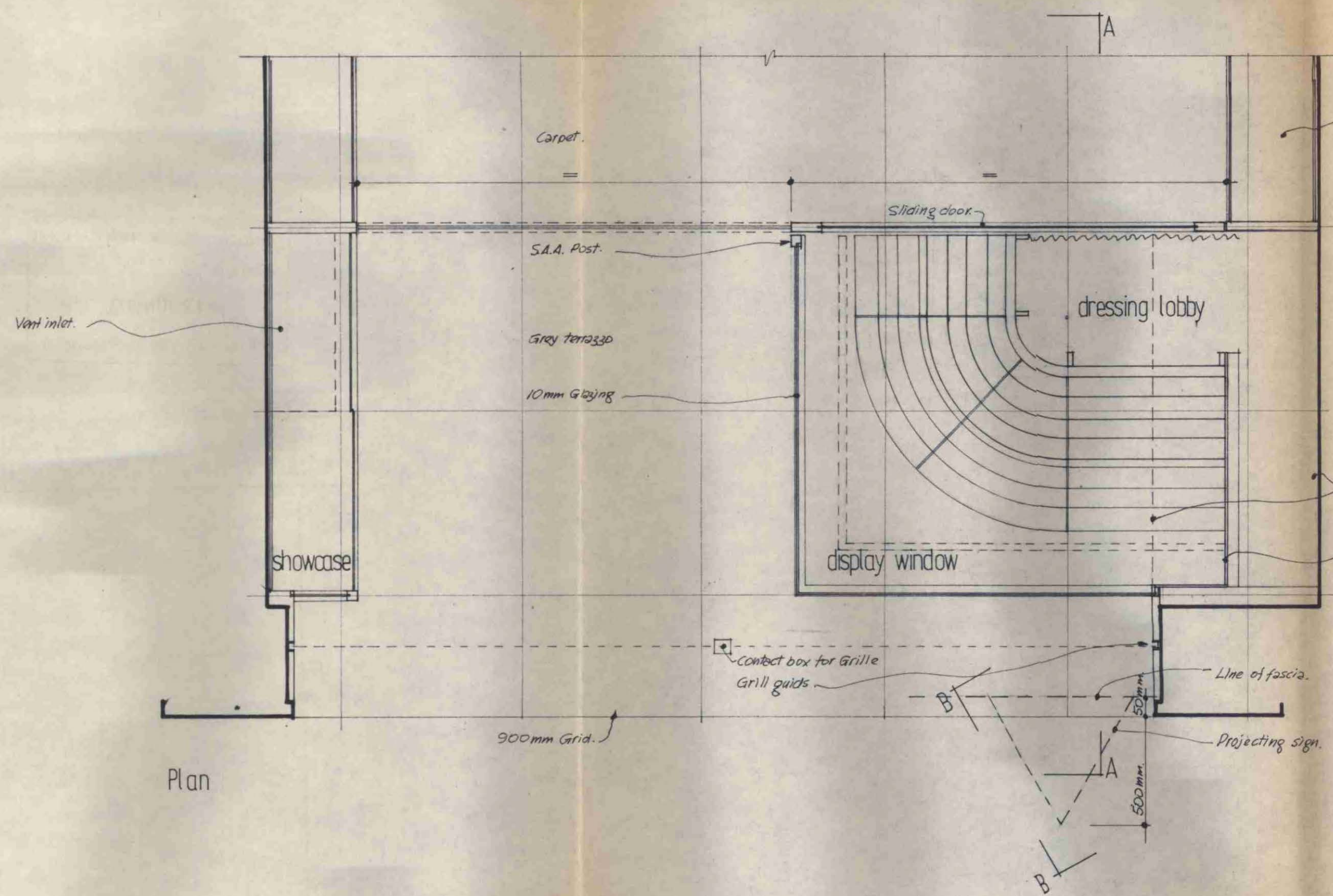
Lead coated sheet steel letter
75mm returns, solid face.
Letter set 40mm clear of
fascia internally illuminated
by white neon.



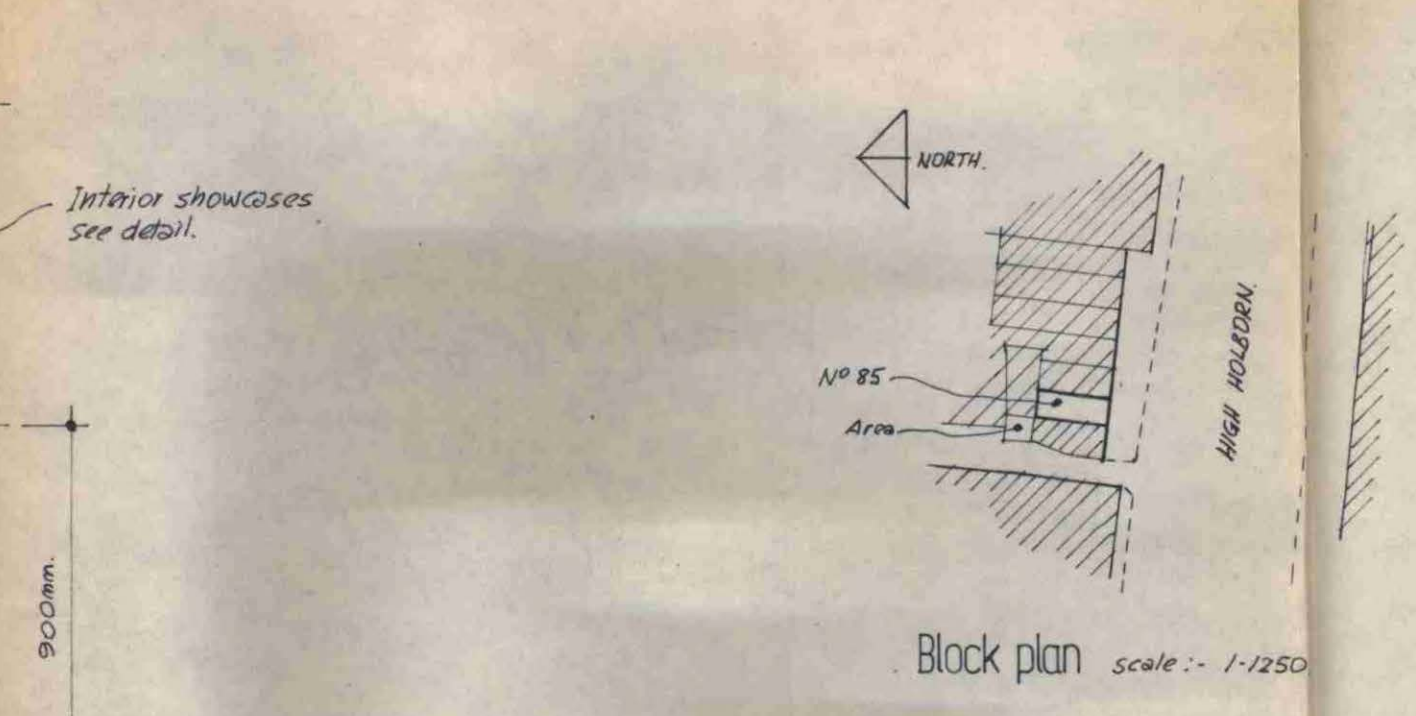
Elevation



Section A-A



Plan



NORTH

No 85 Area

HIGH HOLBORN

Block plan scale: 1/1250

LONDON BOROUGH OF CAMDEN
APPROVED
PLANS
12 JUN 1973
ON BEHALF OF THE COUNCIL

CTP/N15/23/0/16396

revisions
DIXONS PHOTOGRAPHIC LIMITED.
18-24 High Street Edgware.
85 High Holborn, London W.C. 1
HOLBORN
no. **HOL MOS 19**
scale: 1:20 date 13.4.73
designer *W. Smith*