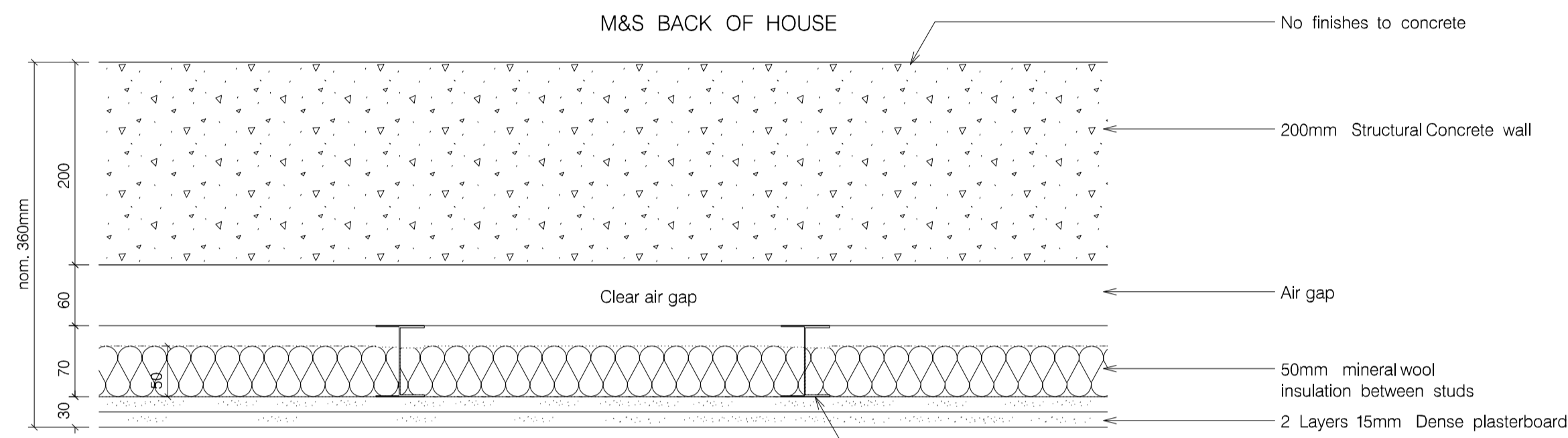
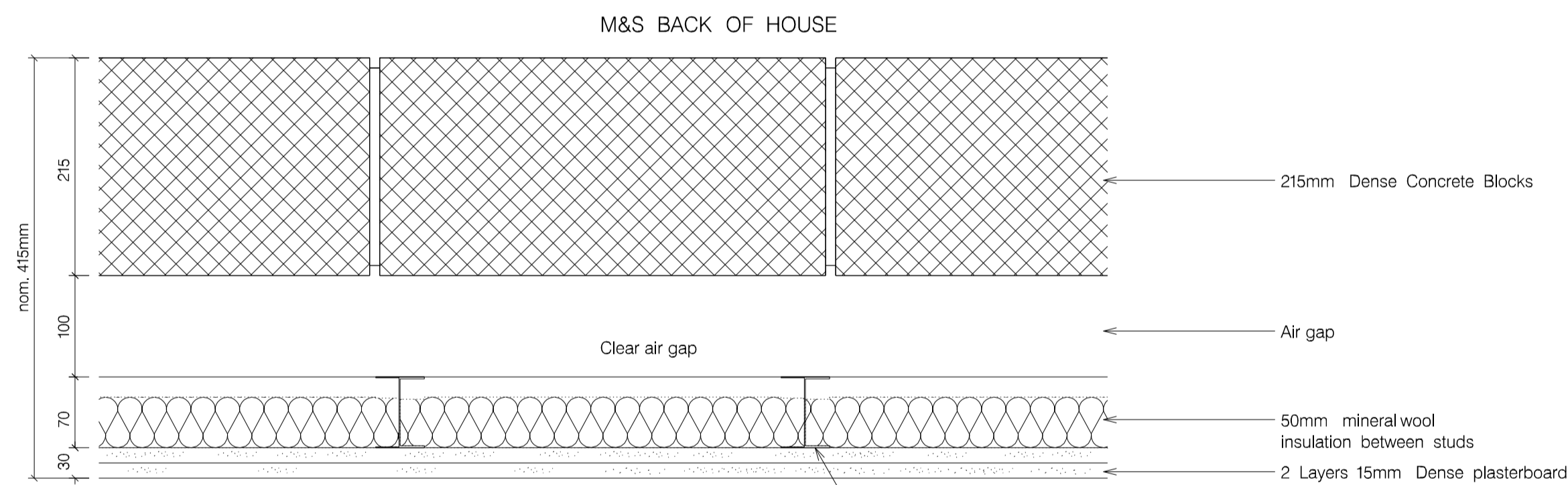


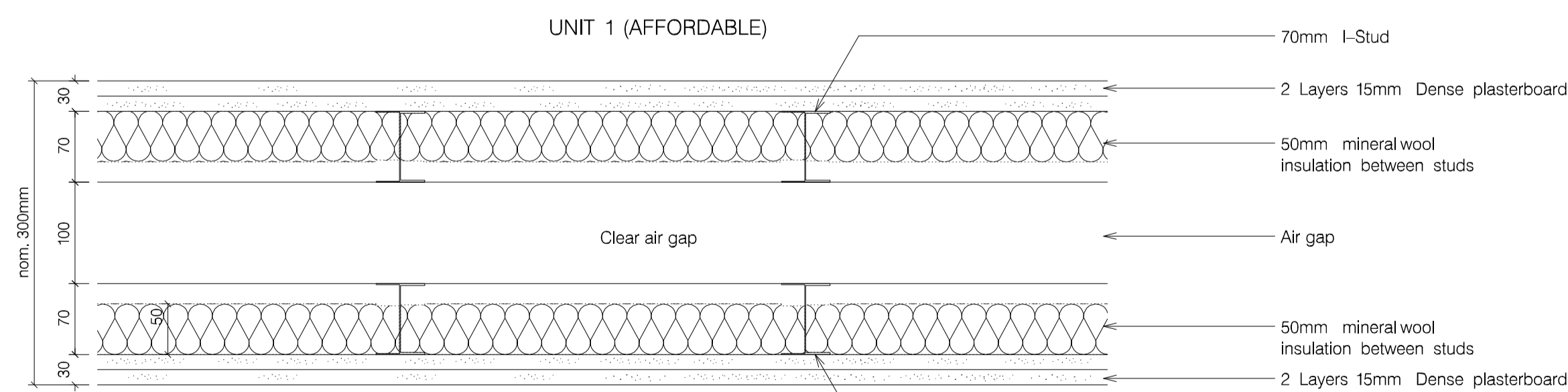
① PROPOSED TYPICAL WALL SEPARATING RESIDENTIAL WALL 60 MINUTES FIRE PROTECTION UNIT 4 / 8



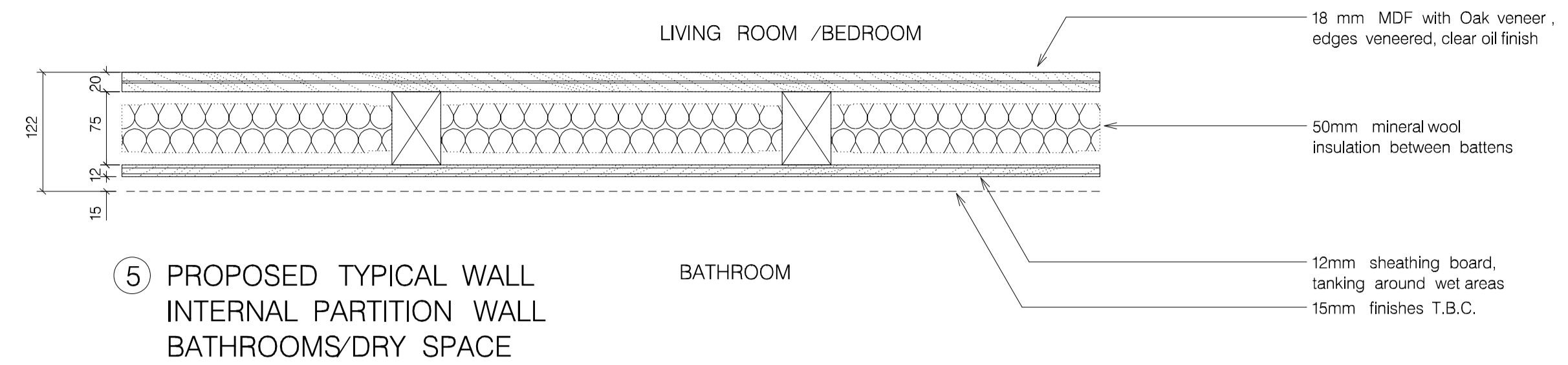
② PROPOSED TYPICAL WALL SEPARATING RESIDENTIAL /RETAIL WALL 120 MINUTES FIRE PROTECTION UNIT 1 / 2 (AFFORDABLE)



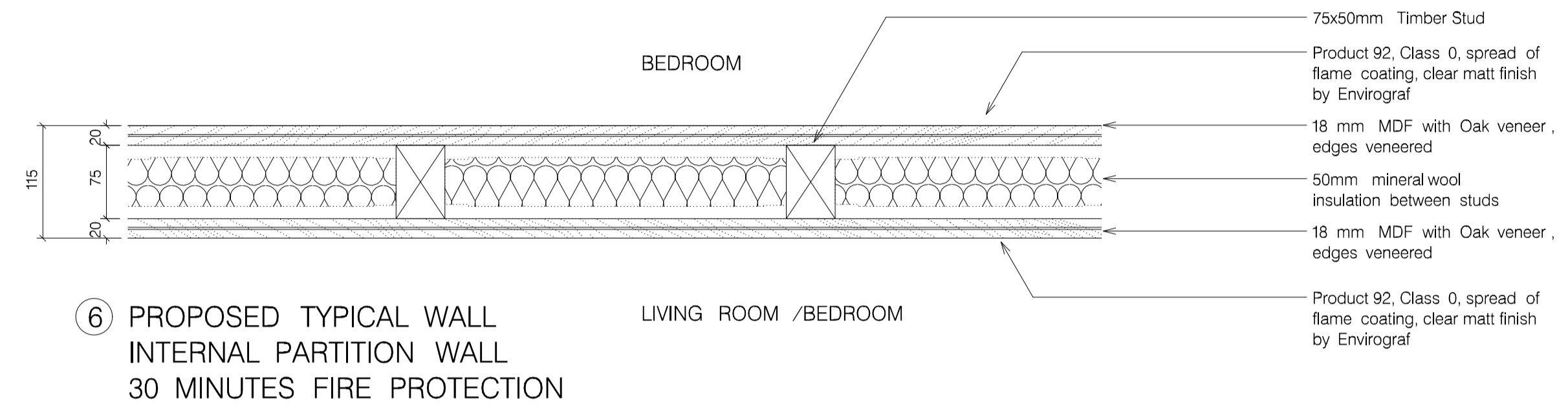
③ PROPOSED TYPICAL WALL SEPARATING RESIDENTIAL /RETAIL WALL 120 MINUTES FIRE PROTECTION UNIT 1 / 2 (AFFORDABLE)



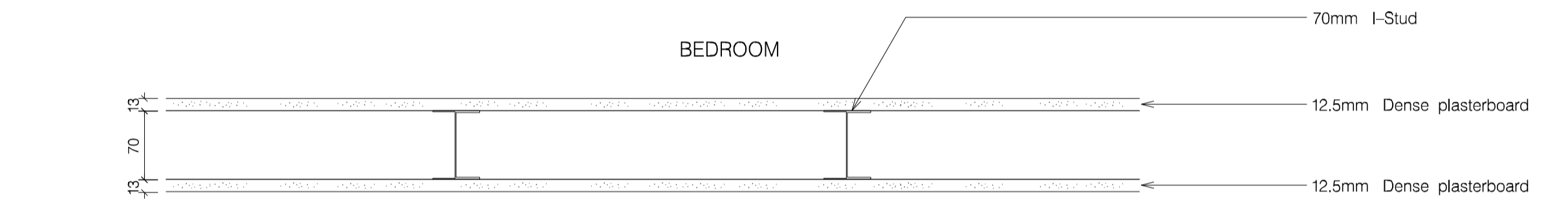
④ PROPOSED TYPICAL SEPARATING RESIDENTIAL WALL 60 MINUTES FIRE PROTECTION UNIT 2 (AFFORDABLE)



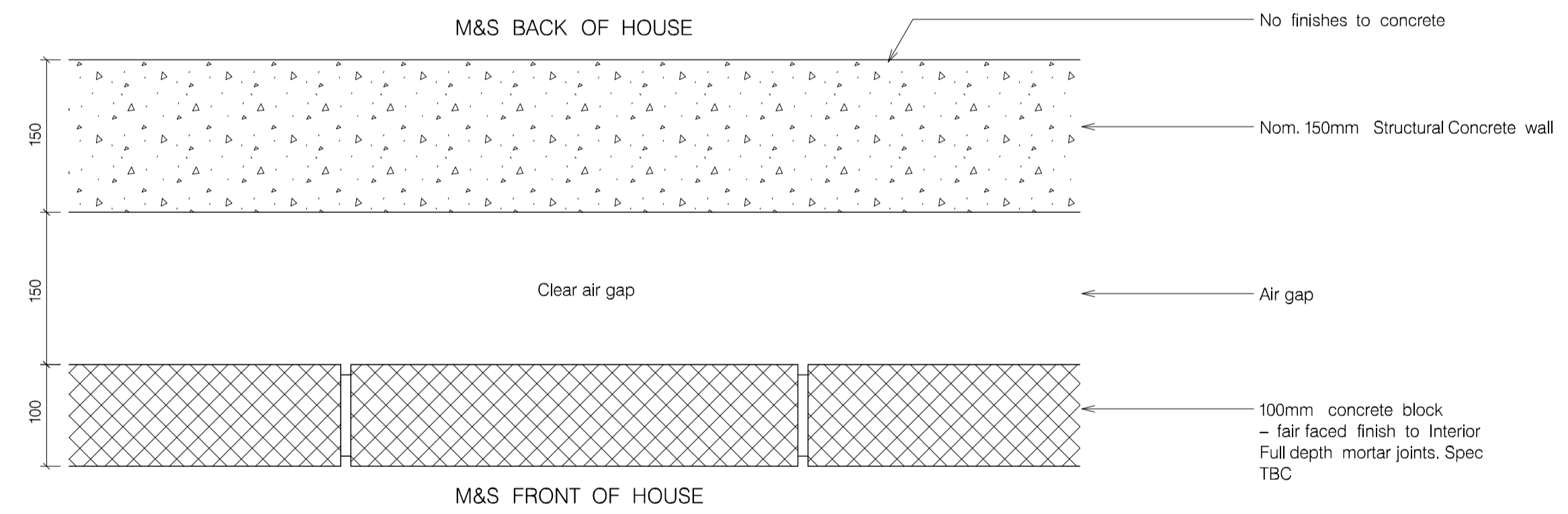
⑤ PROPOSED TYPICAL WALL INTERNAL PARTITION WALL BATHROOMS/DRY SPACE



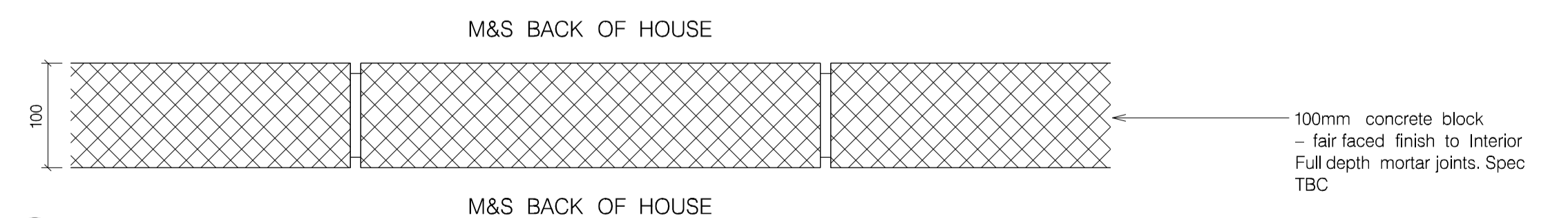
⑥ PROPOSED TYPICAL WALL INTERNAL PARTITION WALL 30 MINUTES FIRE PROTECTION



⑦ PROPOSED TYPICAL WALL INTERNAL PARTITION WALL 30 MINUTES FIRE PROTECTION\_UNIT 1 / 2 (AFFORDABLE)



⑧ PROPOSED TYPICAL WALL SEPERATING RETAIL /RETAIL BACK OF HOUSE 120 MINUTES FIRE PROTECTION



⑨ PROPOSED TYPICAL WALL BACK OF HOUSE INTERNAL PARTITION WALL 120 MINUTES FIRE PROTECTION

REVISION:	PURPOSE:	DATE:
A	ISSUED FOR CONSTRUCTION COORDINATION	16.06.17
B	ISSUED FOR CONSTRUCTION COORDINATION	19.06.17
S1	ISSUED FOR CONSTRUCTION COORDINATION	14.02.2018

1. The design and these drawings are the sole copyright of Amin Taha Architects, 15 Clerkenwell Close, London EC1R 9AA. T: 020 7253 8444 F: 020 7253 9955.  
 2. Do not scale from this drawing in either paper or digital form. Use written dimensions only. To check drawing has been printed to the intended scale this bar should be 80mm long @A1



CLIENT: 317 Finchley Road

PROJECT: 317 Finchley Road London NW3 6EP

DWG TITLE: Proposed Typical Internal Wall Details

REVISION:	DATE:	SCALE:
S1	SEP 2017	@ A1 1:5 @ A3 1:10
DWG No: 240 - 4000	PURPOSE OF ISSUE: S	DK AT