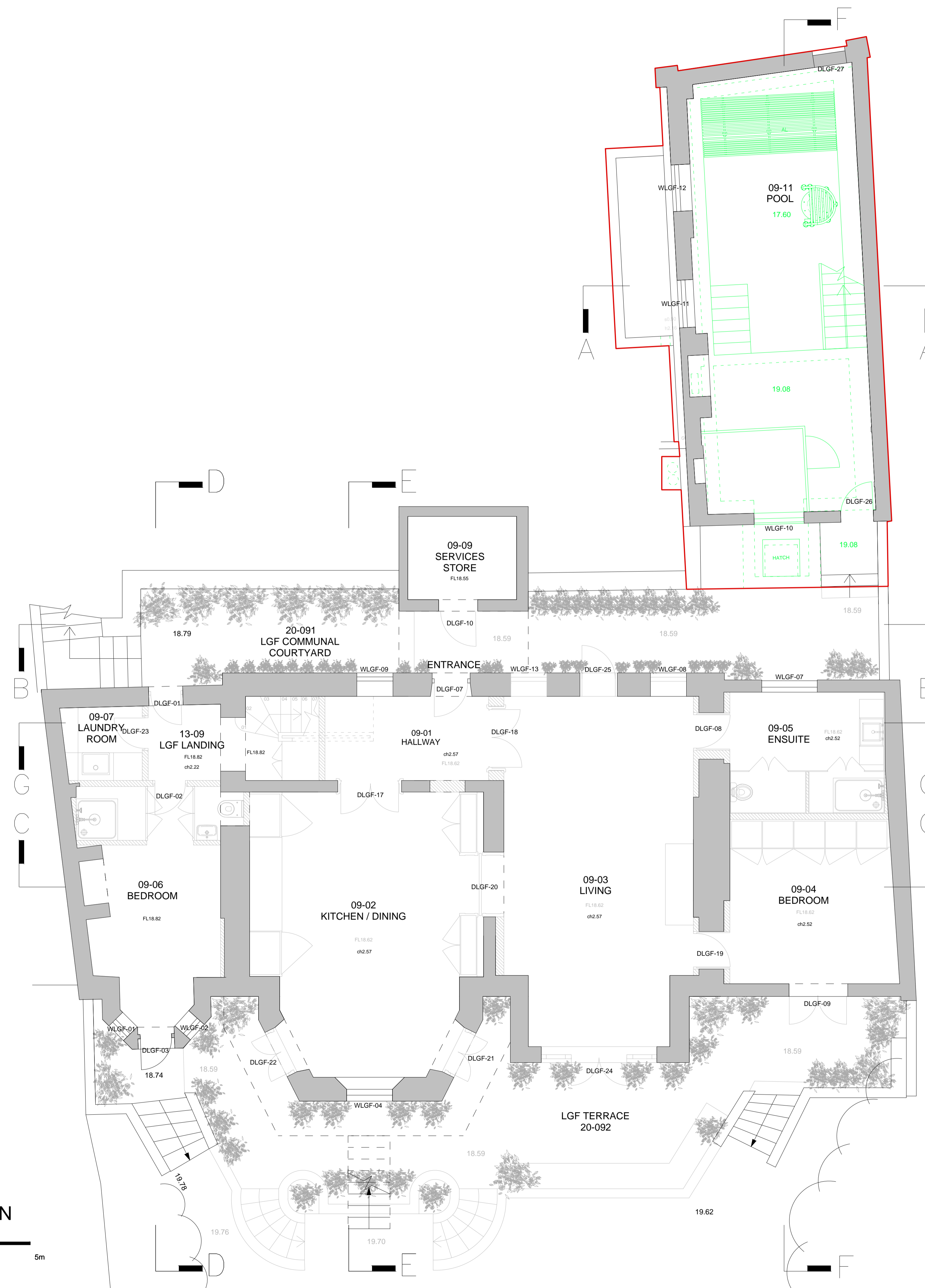


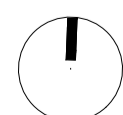
**DO NOT SCALE FROM THIS DRAWING**  
 DRAWING TO BE READ IN CONJUNCTION WITH ALL OTHER ARCHITECTS  
 AND ENGINEER'S CONTRACT DRAWING & SPECIFICATIONS.  
 ANY DISCREPANCIES MUST BE BROUGHT TO THE ATTENTION OF THE  
 ARCHITECT IMMEDIATELY.  
 THE CONTRACTOR MUST VERIFY ALL DIMENSIONS BY SITE  
 MEASUREMENT BEFORE ORDERING MATERIALS OR MANUFACTURING  
 COMPONENTS.  
 SUBSTITUTE MATERIALS & PRODUCTS TO THOSE NAMED WILL BE  
 ACCEPTABLE IF PROVEN TO BE OF EQUAL OR HIGHER PERFORMANCE  
 AND NOT IN CONFLICT WITH OTHER ELEMENTS.

- NOTES  
 KEY:
- Area included in this application
  - Consented Demolition associated with Application ref: 2016/0640/P & 2016/7149/L
  - Proposed

Note:  
 For windows and doors please refer to schedules.



**LOWER GROUND PLAN**



REV	DATE	DESCRIPTION
A	20.12.17	Underpinning revised

FOR PLANNING

JOB TITLE  
**Keats Grove**  
 Hampstead  
 DRAWING TITLE  
 Lower Ground Floor Plan  
 Proposed

JOB No	DWG No	REV
546	D100	A
DRAWN BY	SCALE (AT A1)	DATE
RFB	1:50 (1:100@A3)	Oct17

**RICHARD GRIFFITHS ARCHITECTS**

5 Maidstone Mews, 72-76 Borough High Street, London SE1 1GN  
 T +44(0)20 7357 8788 | F +44(0)20 7403 7887  
 E admin@rgarchitects.com | www.rgarchitects.com