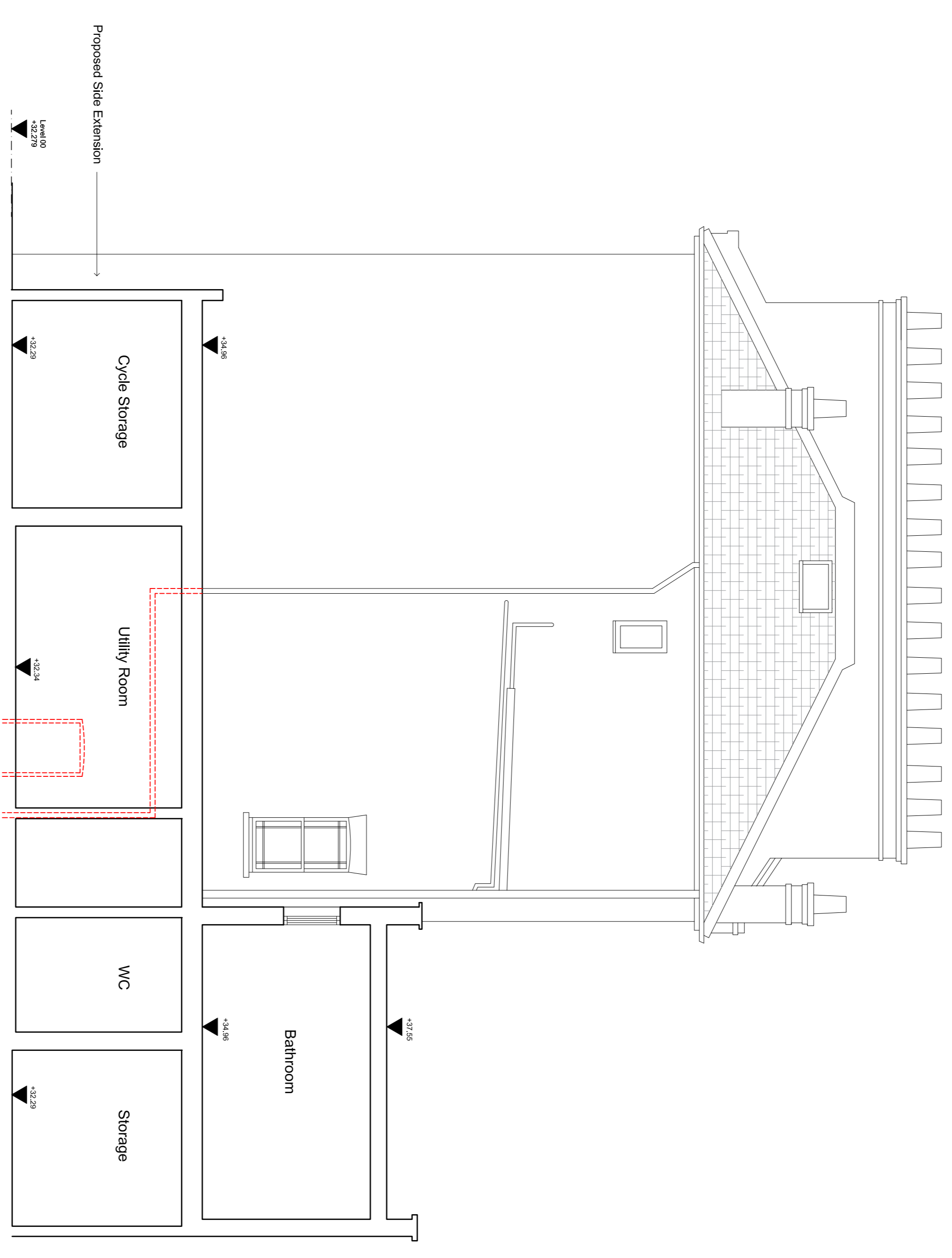


- GENERAL NOTES:**
- G1 For Site and Grid setting out refer to A/XXXX/2000
 - G2 All dimensions to be checked on site
 - G3 Any discrepancies between drawings to be reported to the Architect immediately.
 - G4 All Levels are above Ordnance datum (AOD)
 - G5 New Levels are shown thus: ±00.345
 - G6 Existing Levels are shown thus: EX00.225
 - G7 Use Imperial dimensions only. Do not scale from drawings. IF IN DOUBT, ASK.
 - G8 Refer to Engineers drawings for all structural and services information.
 - G9 For tolerances see the Design Drawings and Specifications
 - G10 For details of work subject to Contractor's Design, this drawing is not to be used for construction purposes only. The Contractor is responsible for the detailed design and co-ordination of the installation within the parameters defined in the specification, design drawings, contract terms and contract documents.

- G9 Room numbers are shown thus: 1193
- G10 Door (D) & Window (W) References R402 / 10 / The Balcony
- G11 Chair height is shown thus 2729 (finished floor to finished soffit)
- G12 T Sheet Reference shown thus M/S-01
- G13 Finishes are shown thus: 100 / 100 / 100
- G14 Settling Out Points shown thus: S29 / 100
- G15 Refer to A/xxxx/100 for T Sheet references, and to A/xxxx/110 to 3197 for Architectural Specifications.

NOTES:



Drawn: 20.02.00

Date	Revision	Status
20.02.00	1	Issue for Construction
20.02.00	2	Issue for Construction
20.02.00	3	Issue for Construction
20.02.00	4	Issue for Construction
20.02.00	5	Issue for Construction
20.02.00	6	Issue for Construction
20.02.00	7	Issue for Construction
20.02.00	8	Issue for Construction
20.02.00	9	Issue for Construction
20.02.00	10	Issue for Construction
20.02.00	11	Issue for Construction
20.02.00	12	Issue for Construction
20.02.00	13	Issue for Construction
20.02.00	14	Issue for Construction
20.02.00	15	Issue for Construction
20.02.00	16	Issue for Construction
20.02.00	17	Issue for Construction
20.02.00	18	Issue for Construction
20.02.00	19	Issue for Construction
20.02.00	20	Issue for Construction
20.02.00	21	Issue for Construction
20.02.00	22	Issue for Construction
20.02.00	23	Issue for Construction
20.02.00	24	Issue for Construction
20.02.00	25	Issue for Construction
20.02.00	26	Issue for Construction
20.02.00	27	Issue for Construction
20.02.00	28	Issue for Construction
20.02.00	29	Issue for Construction
20.02.00	30	Issue for Construction
20.02.00	31	Issue for Construction
20.02.00	32	Issue for Construction
20.02.00	33	Issue for Construction
20.02.00	34	Issue for Construction
20.02.00	35	Issue for Construction
20.02.00	36	Issue for Construction
20.02.00	37	Issue for Construction
20.02.00	38	Issue for Construction
20.02.00	39	Issue for Construction
20.02.00	40	Issue for Construction
20.02.00	41	Issue for Construction
20.02.00	42	Issue for Construction
20.02.00	43	Issue for Construction
20.02.00	44	Issue for Construction
20.02.00	45	Issue for Construction
20.02.00	46	Issue for Construction
20.02.00	47	Issue for Construction
20.02.00	48	Issue for Construction
20.02.00	49	Issue for Construction
20.02.00	50	Issue for Construction

EDWARD WILLIAMS ARCHITECTS
 Newcombe House, 45 Notting Hill Gate, London W1T 3LD, UK
 www.edwardwilliamsarchitects.com T: +44 (0)2079859540

Project: 21 Panshull Road
Subject: Side Elevation
 Proposed

Scale: 1:50 @ A1 (1:100 @ A3)
Sort Code: Drawing No. Revision
A21PR 4002 C