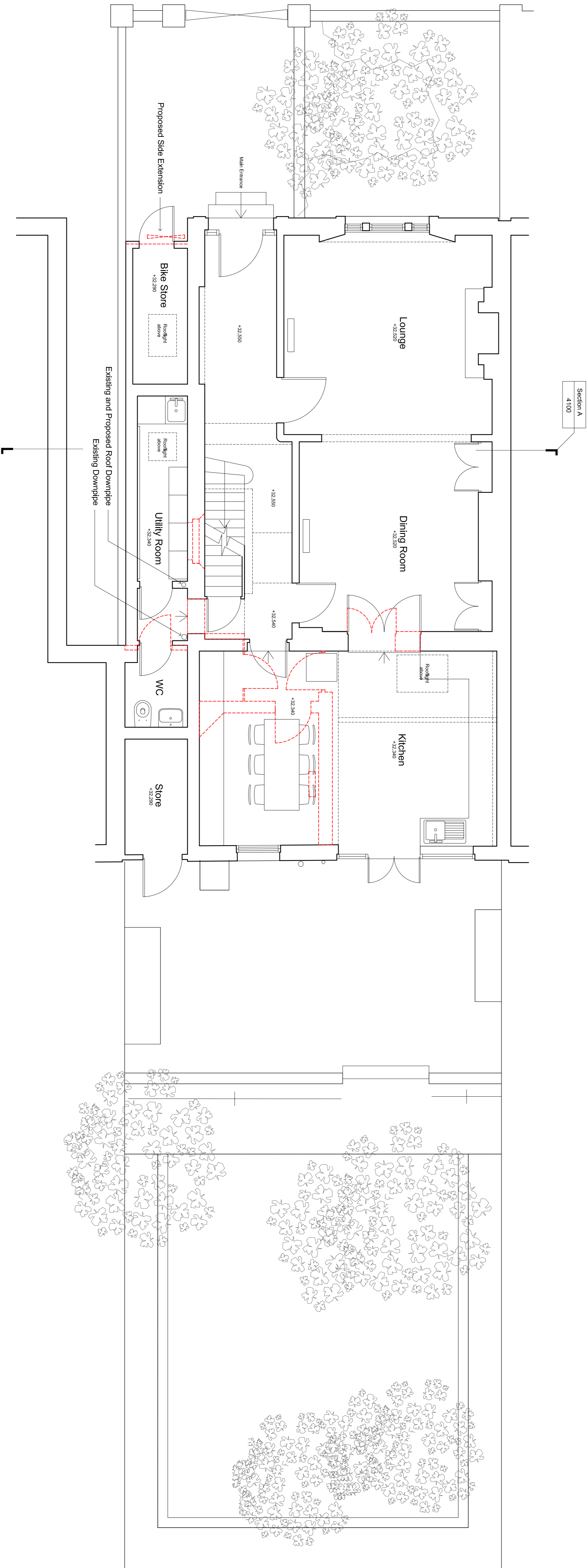
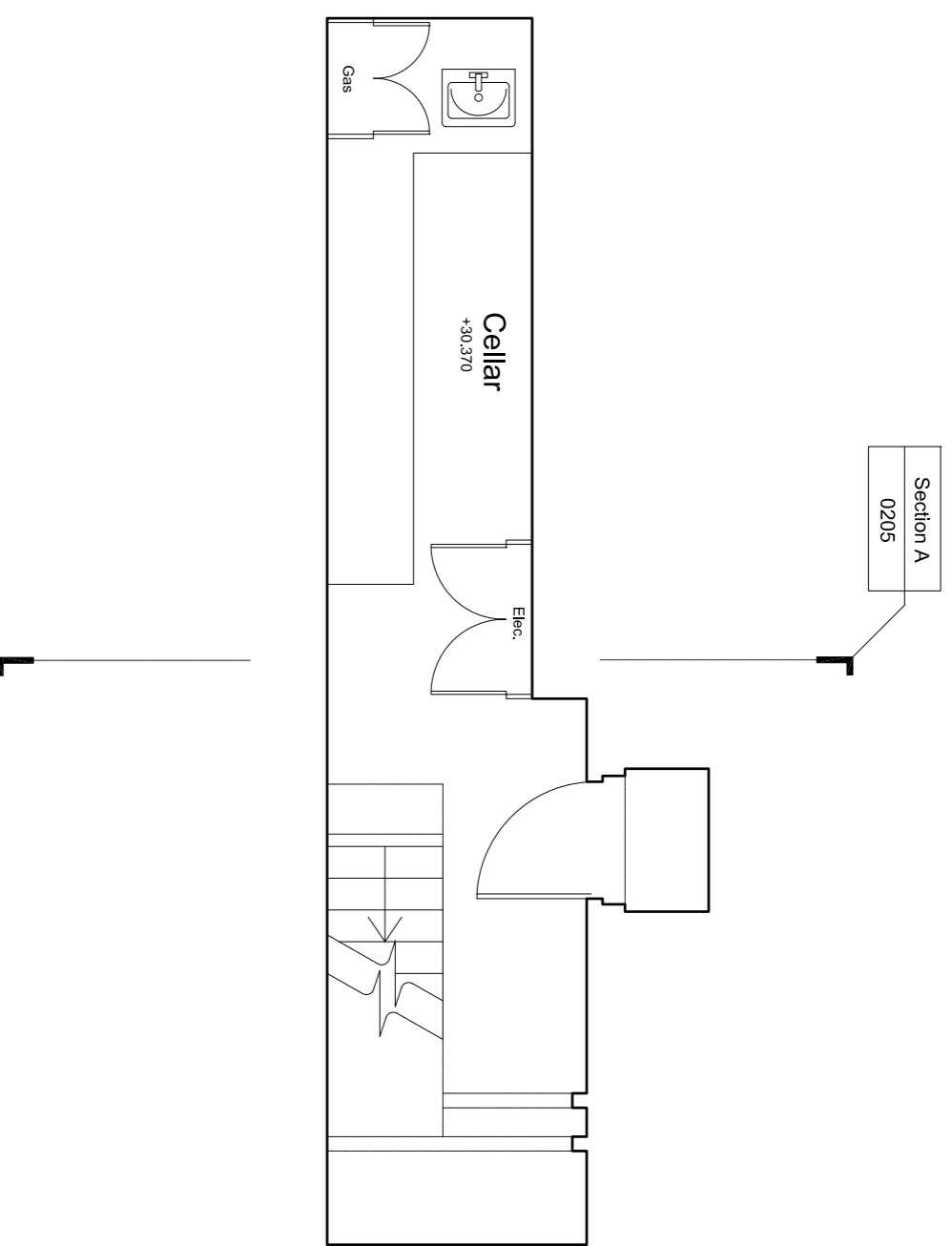


GENERAL NOTES:

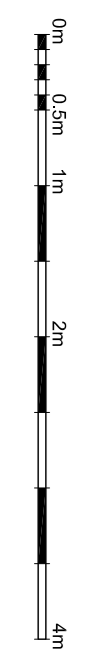
- G1 For Site and Grid setting out refer to AXXXX/2000
- G2 All dimensions to be checked on site
- G3 Any discrepancies between drawings to be reported to the Architect immediately.
- G4 All Levels are above Ordnance datum (AOD)
- G5 New Levels are shown thus: ±20.325
- G6 Existing Levels are shown thus: EX20.325
- G7 Use Imperial dimensions only. Do not scale from drawings. IF IN DOUBT, ASK.
- G8 Refer to Engineers drawings for all structural and services information.
- G9 For tolerances see the Design Drawings and Specifications
- G10 For details of work subject to Contractor's Design, this shall be subject to the Contractor's approval only. The Contractor is responsible for the detailed design and co-ordination of the installation within the parameters defined in the specification, design drawings, contract terms and confirmed documents.
- G11 Room numbers are shown thus: 119
- G12 Door(D) & Window (W) References R402 W100
- G13 Clear height is shown thus 2729
- G14 T Sheet Reference shown thus M5-01
- G15 Finishes are shown thus: S2 S3 S4 S5 S6 S7 S8 S9 S10 S11 S12 S13 S14 S15 S16 S17 S18 S19 S20 S21 S22 S23 S24 S25 S26 S27 S28 S29 S30 S31 S32 S33 S34 S35 S36 S37 S38 S39 S40 S41 S42 S43 S44 S45 S46 S47 S48 S49 S50 S51 S52 S53 S54 S55 S56 S57 S58 S59 S60 S61 S62 S63 S64 S65 S66 S67 S68 S69 S70 S71 S72 S73 S74 S75 S76 S77 S78 S79 S80 S81 S82 S83 S84 S85 S86 S87 S88 S89 S90 S91 S92 S93 S94 S95 S96 S97 S98 S99 S100
- G14 Settling Out Points shown thus: S2 S3 S4 S5 S6 S7 S8 S9 S10 S11 S12 S13 S14 S15 S16 S17 S18 S19 S20 S21 S22 S23 S24 S25 S26 S27 S28 S29 S30 S31 S32 S33 S34 S35 S36 S37 S38 S39 S40 S41 S42 S43 S44 S45 S46 S47 S48 S49 S50 S51 S52 S53 S54 S55 S56 S57 S58 S59 S60 S61 S62 S63 S64 S65 S66 S67 S68 S69 S70 S71 S72 S73 S74 S75 S76 S77 S78 S79 S80 S81 S82 S83 S84 S85 S86 S87 S88 S89 S90 S91 S92 S93 S94 S95 S96 S97 S98 S99 S100
- G15 Refer to Axxxx100 for T Sheet references, and to Axxxx110 to 319 for Architectural Specifications.

NOTES:

Existing Basement Plan



Proposed Ground Floor Plan



Date	Revision	Status
08/03/17	1	Issue for Construction
08/03/17	2	Issue for Construction
13/10/17	3	Issue for Construction
20/12/17	4	Issue for Construction
10/02/18	5	Issue for Construction
14/02/18	6	Issue for Construction

EDWARD WILLIAMS ARCHITECTS
Newcombe House, 45 Notting Hill Gate, London W11 3LQ, UK
www.edwardwilliamsarchitects.com T. +44 (0)2079850540

Project: 21 Panshill Road
Subject: Ground Floor Plan
Proposed

Scale: 1:50 @ A1 (1:100 @ A3)

Sort Code	Drawing No.	Revision
AZ1PR	3000	G