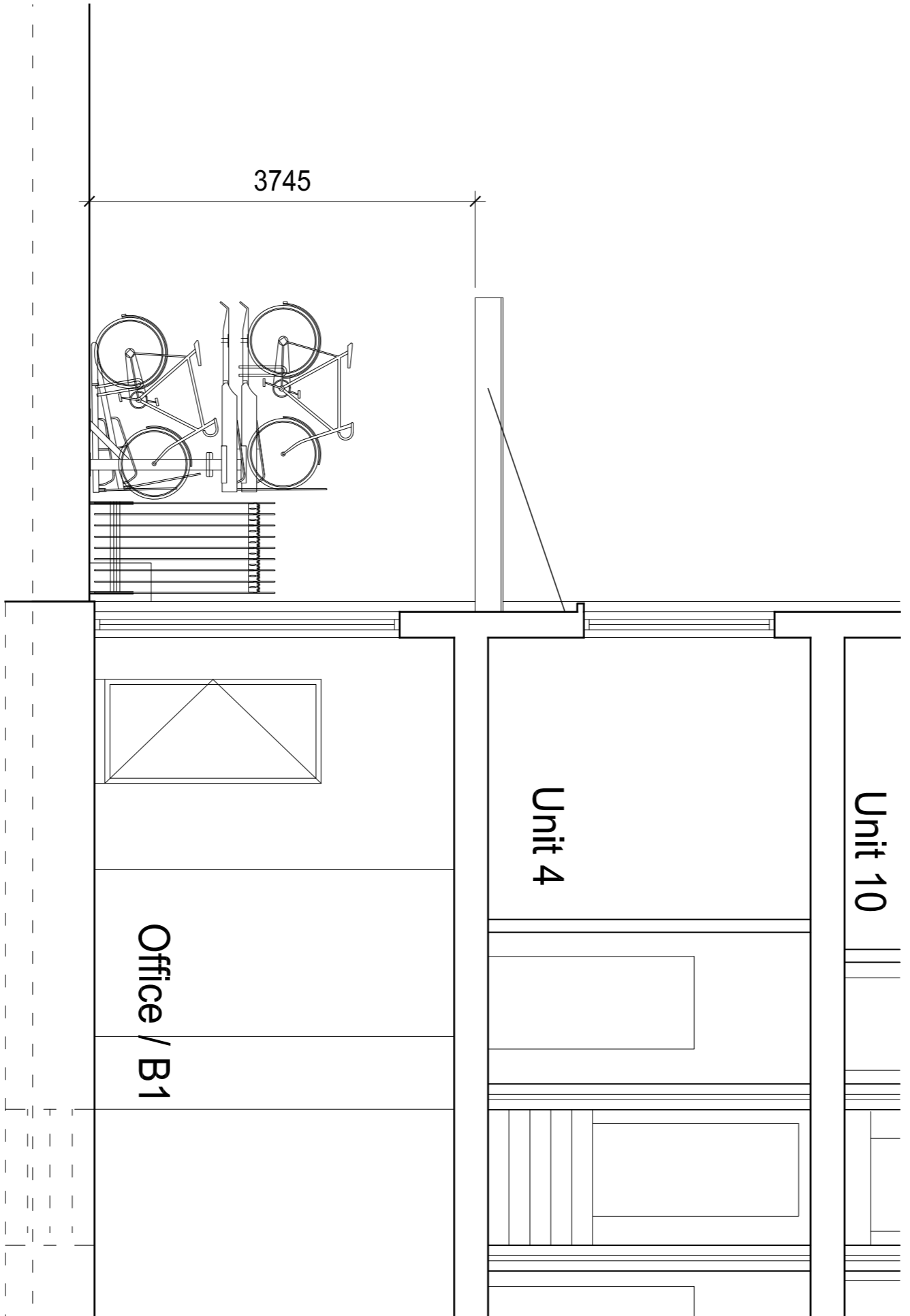


2. ELEVATION



The Jostia 2-tier rack is a double decker bicycle rack. This racking system stores one bike directly above the other. Increasing therefore the amount of bicycles parked by up to 50%. The manufacturer's design guidelines are as follows:
 -The headroom is the most important factor for this racking system. A minimum of 2600mm is required for maximum capacity. In our case the canopy over is at 3.7m.
 -The racks are spaced at between 395mm and 500mm apart. We are proposing to leave 400mm.

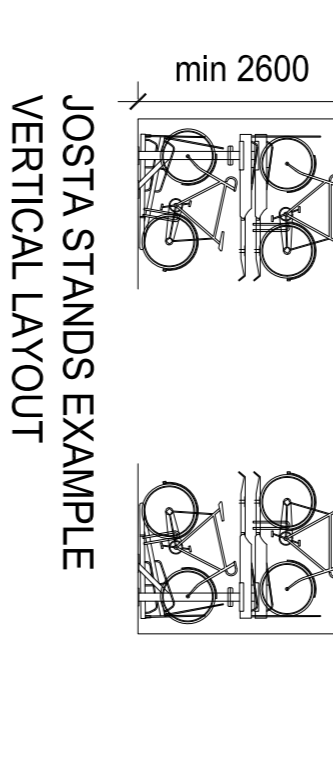
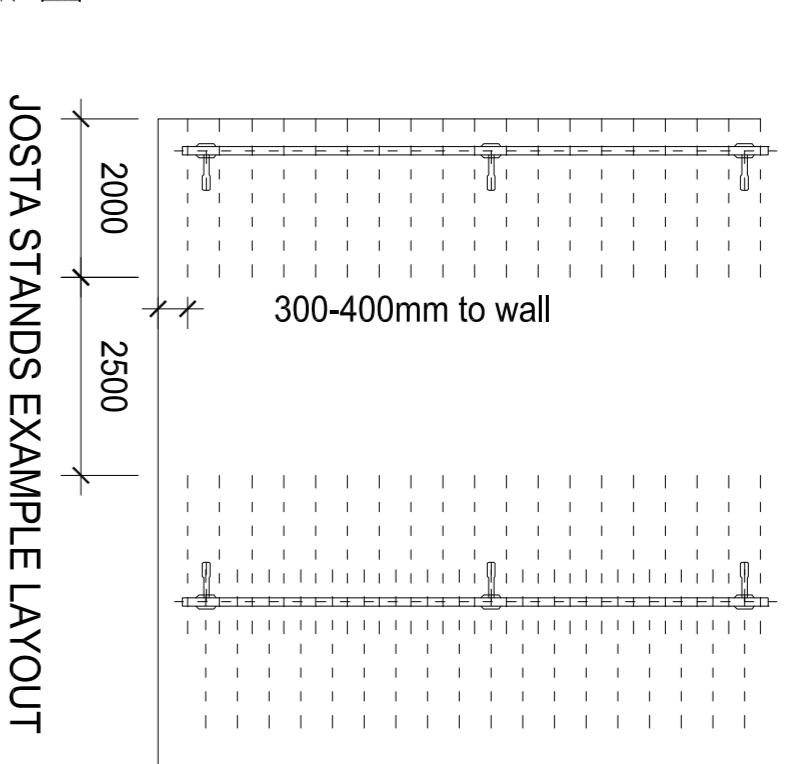
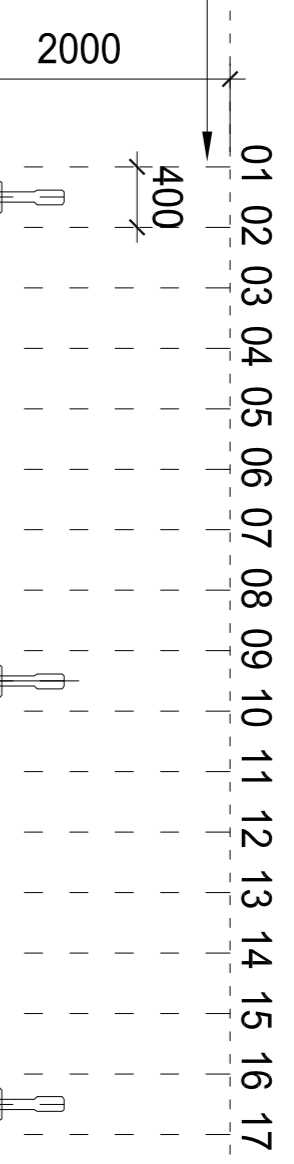
3

2

COURTYARD

**JOSTA CYCLE RACKS
 17 X CYCLE STANDS
 (CAN ACCOMMODATE 34 CYCLES)**

Canopy above
 Cycle stands

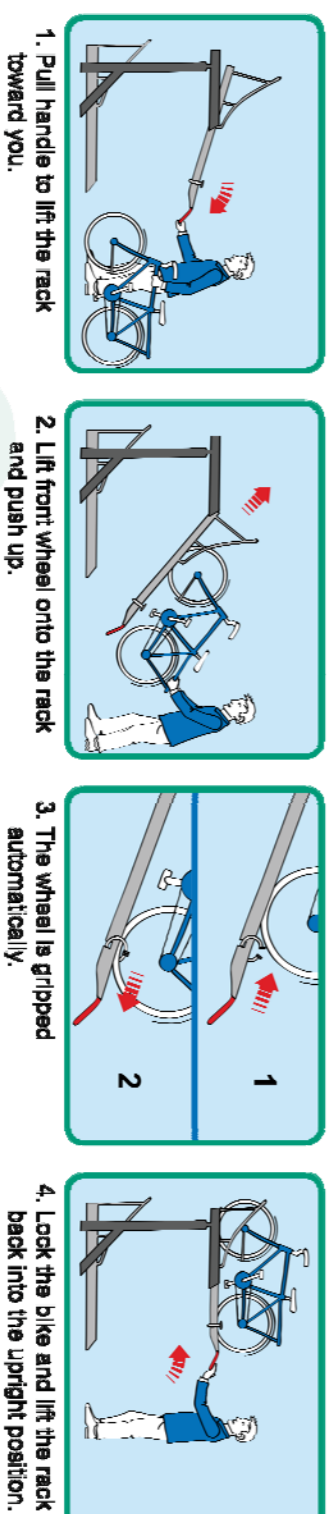


REVISIONS	Rev.	Drawn By	Checked By

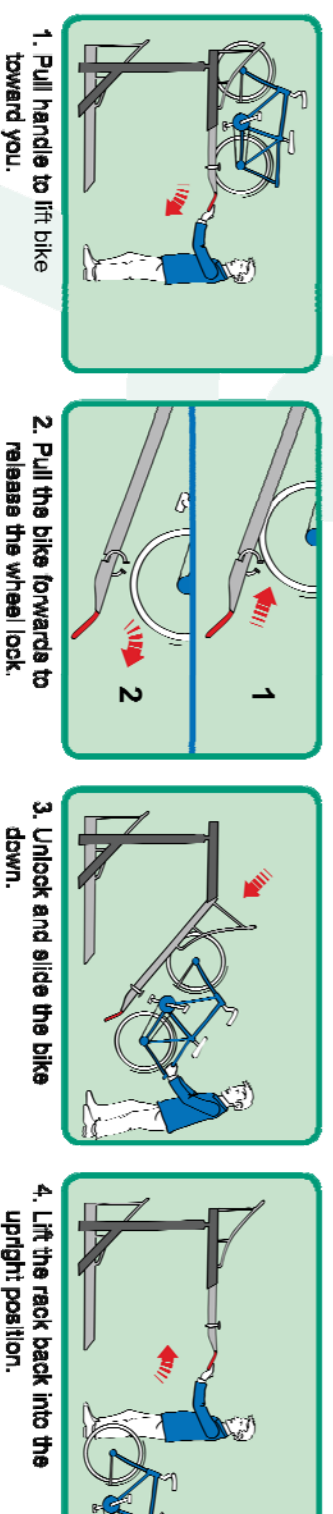
3. SECTION

HOW TO OPERATE A JOSTA RACK:

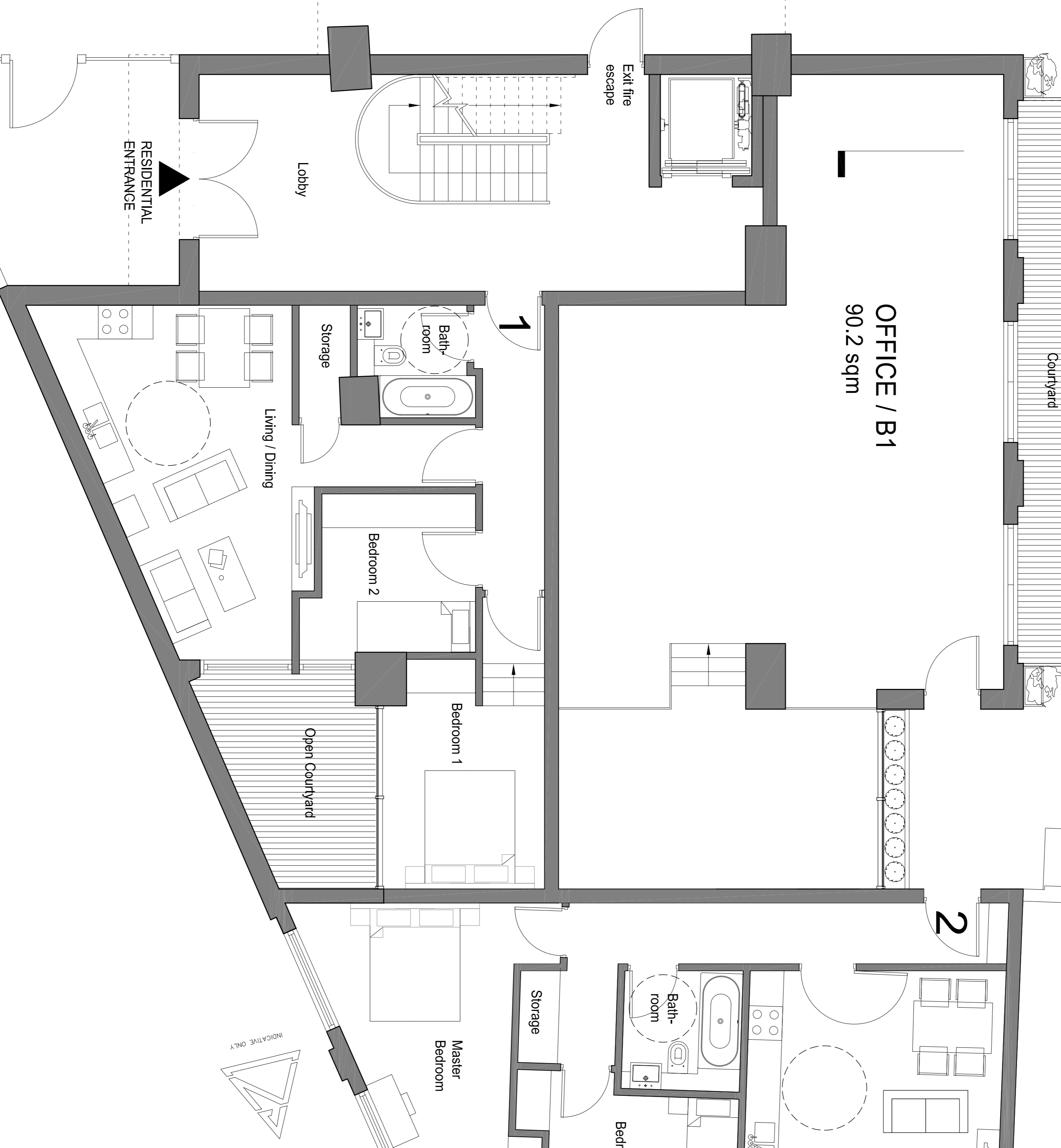
Store a bike in four easy steps



Retrieving a bike in four easy steps



1. GROUND FLOOR PLAN



SUBMISSION DRAWING FOR APPROVAL OF
 DETAILS REQUIRED BY CONDITION 5
 OF PLANNING PERMISSION DATED 27/11/2015
 (ref 2015/0929P)

PLANNING APPLICATION

ALL DIMENSIONS TO BE CHECKED ON SITE
 WORK TO BE COMPLETED TO THE ARCHITECT'S
 REPORT AND THE PLANNING PERMISSION
 AT THE END OF THE PROJECT

Contemporary Design Solutions

46 Great Marlborough Street
 London
 W1F 7JW Fax: 020 7494 4844
 Telephone: 020 7549 9000 Fax: 020 7494 4844

Client
RISEFALL LTD

Project Title
 17, 27 & 25 Ferdinand Street,
 LONDON, NW1

Drawing Title
**Proposed Ground Floor
 Cycle Storage Area**

Scale: 1:50 @ A1, 1:100 @ A3 Date: February 2016
 Drawing No: LV Checked: Rev: -
141205-A(90)001
 CAD plot date: 15 Feb 2016 - 02:25pm