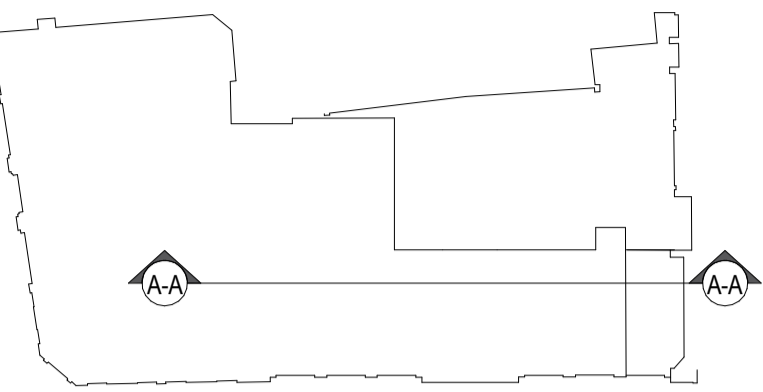


NOTES:
 Do not scale from this drawing.
 Dimensions to be site checked by Contractor working only from grid and
 figure dimensions and cross checked with all other relevant drawings.
 Any discrepancies to be reported to the Architect prior to construction.
 The title, copyright and information in this document is the property of
 Morrison Design Ltd, Chartered Architects.



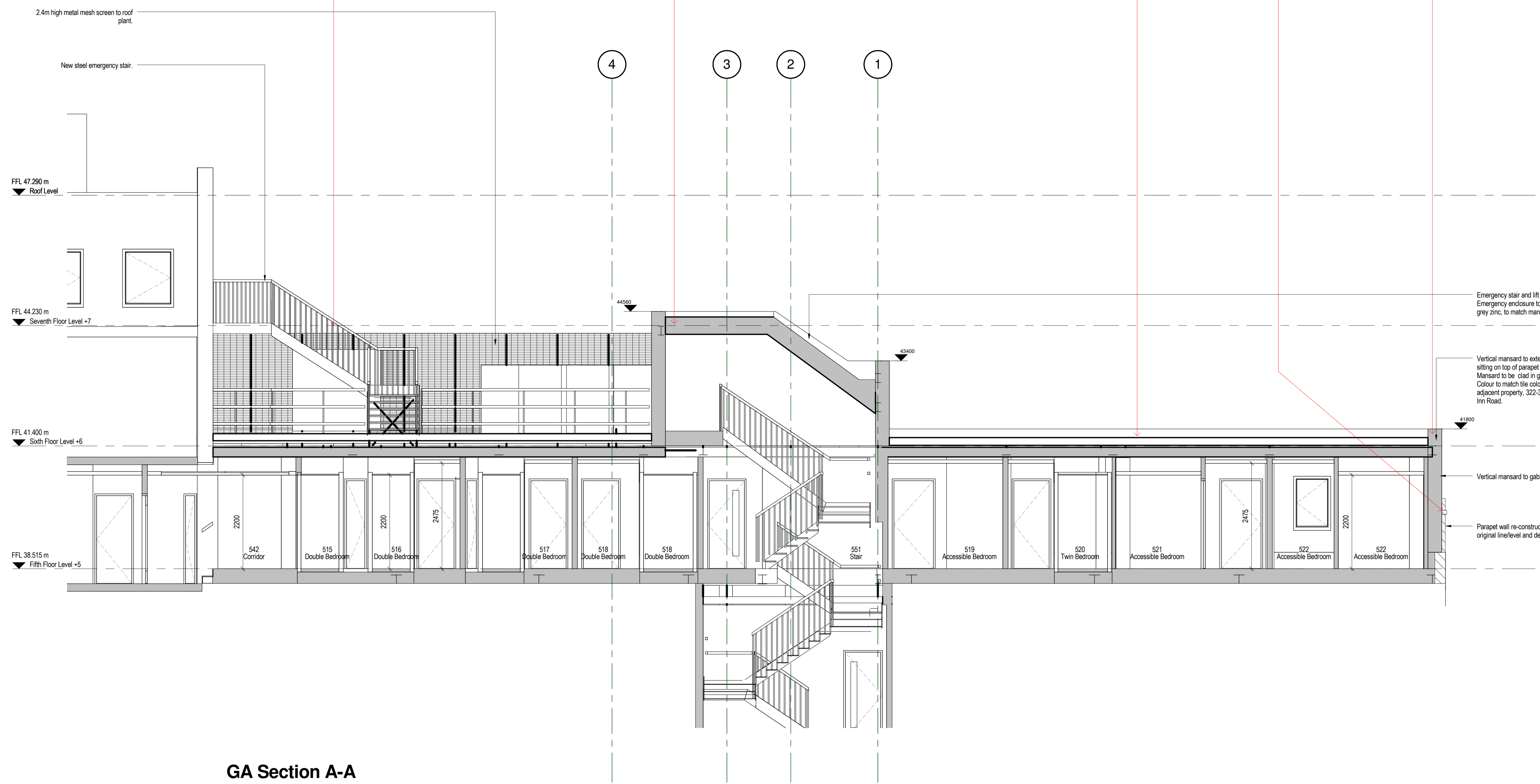
External escape stairs from 7th floor
 re-configured to suit new escape
 layout.

Stair enclosure re-configured to
 better suit direction of escape
 and internal stair arrangements.

Roof level raised by 100mm
 to accommodate transfer
 structure.

Gable end chimney retained.

Mansard changed from
 angled to vertical on the gable
 end wall.



GA Section A-A
 1 : 50

Revision	Description	Date
A	Explanatory notes added to drawing.	13.07.17



MORRISON DESIGN
 CHARTERED ARCHITECTS

St Alkmunds House, 103 Belper Road, Derby DE1 3ES
 T: 01332 363355 F: 01332 291441 E: architect@morrisondesign.co.uk

Job Title
 Proposed Extension, Point a Hotel, Kings Cross

Queensway Hospitality
 Drawing Title
 GA Section AA

Scale	Drawn	Author	CFI	Date
@ A1: As indicated				06/13/17
Job No.	Drawing No.	Revision		
3949	P08	A		

PLANNING SUBMISSION