

**GENERAL NOTES**

**REFRIGERATION PIPEWORK**

THE INDOOR AND OUTDOOR UNITS WILL BE INTERCONNECTED WITH REFRIGERATION QUALITY PIPEWORK FULLY ANNEALED AND INTERNALLY DEGREASED AND CLEANED TOGETHER WITH BRAZE FITTINGS.

THE INSTALLATION WILL ALSO BE FIXED TO CONTAINMENT TRAY WORK OR SYSTEM WITH RESILIENT CLIPS TO PREVENT VIBRATION TRANSMISSION AND TO ALLOW MOVEMENT OF PIPELINES.

**PIPEWORK INSULATION**

ALL PIPEWORK (SUCTION, DISCHARGE AND LIQUID) TO BE INSULATED WITH SLIP ON CLOSE CELL ELASTOMERIC PIPE INSULATION (AS MANUFACTURED BY ARMAFLEX OR EQUAL AND APPROVED), WITH A FIRE PERFORMANCE CLASS '0' OF THE BUILDING REGULATIONS 1985, WITH A WALL OF THICKNESS OF NOT LESS THAN 10mm. INSULATION MUST BE PROTECTED WHEN EXPOSED TO ATMOSPHERE BY SPECIAL PAINT OR COVERED BY AN ENCLOSURE.

ALL INSULATION JOINTS, AFTER PRESSURE AND LEAK TESTING, ARE TO BE PROPERLY GLUED AND OR TAPED TO PROVIDE A COMPLETE SEAL TO PREVENT ANY CONDENSATION, AND SHOULD BE CLEARLY MARKED (YELLOW TAPE) FOR EASE OF IDENTIFICATION.

**PIPEWORK PRESSURE TESTING AND REFRIGERANT CHARGING**

AFTER INSTALLATION OF PIPEWORK, PRIOR TO CONNECTION TO THE CONDENSING UNITS, SEALING OF INSULATION JOINTS AND STARTING OF EQUIPMENT THE SYSTEM WILL BE PRESSURE TESTED USING OXYGEN FREE DRY NITROGEN FOR 24 HOURS AND CHECKED FOR LEAKS. CONDENSING UNITS WILL THEN BE CONNECTED AND THE SYSTEM VACUUM DEHYDRATED AND HELD AT THAT SETTING FOR 1 HOUR (MINIMUM) TO 4 HOURS DEPENDING ON PIPE LENGTH. ALL OF THE ABOVE WORKS WILL BE CARRIED OUT BEFORE ELECTRICAL CONNECTION IS MADE TO THE UNITS.

**CONDENSATE DRAINAGE SYSTEM**

A PIPEWORK SYSTEM FOR CONDENSATE REMOVAL FROM INTERNAL EVAPORATOR UNITS WILL BE PUMPED AND ROUTED TO CONNECT INTO THE NEAREST AVAILABLE COMMON CONDENSATE SYSTEM AND DISCHARGED BY GRAVITY TO THE NEAREST SWP VIA TRAP AND TUNDISH.

CONDENSATE PIPEWORK AND FITTINGS WILL BE COPPER PIPEWORK TO BS 2871 TABLE X.

**FIRST FLOOR - VRF SYSTEM FAN COIL UNIT SCHEDULE - DAIKIN**

INDOOR UNIT REF	INDOOR UNIT MODEL	LOCATION	TC	SC	HTG	AIR FLOW	SOUND	DIMENSIONS			WEIGHT (kg)	PIPE CONNECTIONS		POWER SUPPLY (Ø, Hz, V)
			(kW)	(kW)	(kW)	HIGH (m³/s)	HIGH (dBa)	HEIGHT (mm)	WIDTH (mm)	DEPTH (mm)		LIQUID	GAS	
FCU1/01	FXAQ32P	INTERVIEW ROOM 5	2.90	2.40	4.00	0.420	37.5	290	795	238	11	1/4	1/2	1, 50, 230
FCU1/02	FXZQ32A	HALLWAY	2.90	2.10	4.00	0.167	33.5	260 (306)	575 (620)	575 (620)	16.5(19.3)	1/4	1/2	1, 50, 230
FCU1/03	FXAQ32P	INTERVIEW ROOM 6	2.90	2.40	4.00	0.420	37.5	290	795	238	11	1/4	1/2	1, 50, 230
FCU1/04	FXAQ15P	INTERVIEW ROOM 7	1.40	1.40	1.90	0.117	34	290	795	238	11	1/4	1/2	1, 50, 230
FCU1/05	FXAQ15P	INTERVIEW ROOM	1.40	1.40	1.90	0.117	34	290	795	238	11	1/4	1/2	1, 50, 230
FCU1/06	FXAQ20P	INTERVIEW ROOM 6	1.80	1.80	2.50	0.125	35	290	795	238	11	1/4	1/2	1, 50, 230
FCU1/07	FXAQ40P	STAFF ROOM	3.60	3.30	5.00	0.200	39	290	1050	238	14	1/4	1/2	1, 50, 230
FCU1/08	FXZQ32A	OFFICE AREA	2.90	2.10	4.00	0.167	33.5	260 (306)	575 (620)	575 (620)	16.5(19.3)	1/4	1/2	1, 50, 230
FCU1/09	FXZQ32A	OFFICE AREA	2.90	2.10	4.00	0.167	33.5	260 (306)	575 (620)	575 (620)	16.5(19.3)	1/4	1/2	1, 50, 230
FCU1/10	FXZQ32A	RELATIONS CENTRE	2.90	2.10	4.00	0.167	33.5	260 (306)	575 (620)	575 (620)	16.5(19.3)	1/4	1/2	1, 50, 230
FCU1/11	FXZQ40A	RELATIONS CENTRE	3.60	2.90	5.00	0.192	37	260 (306)	575 (620)	575 (620)	16.5(19.3)	1/4	1/2	1, 50, 230

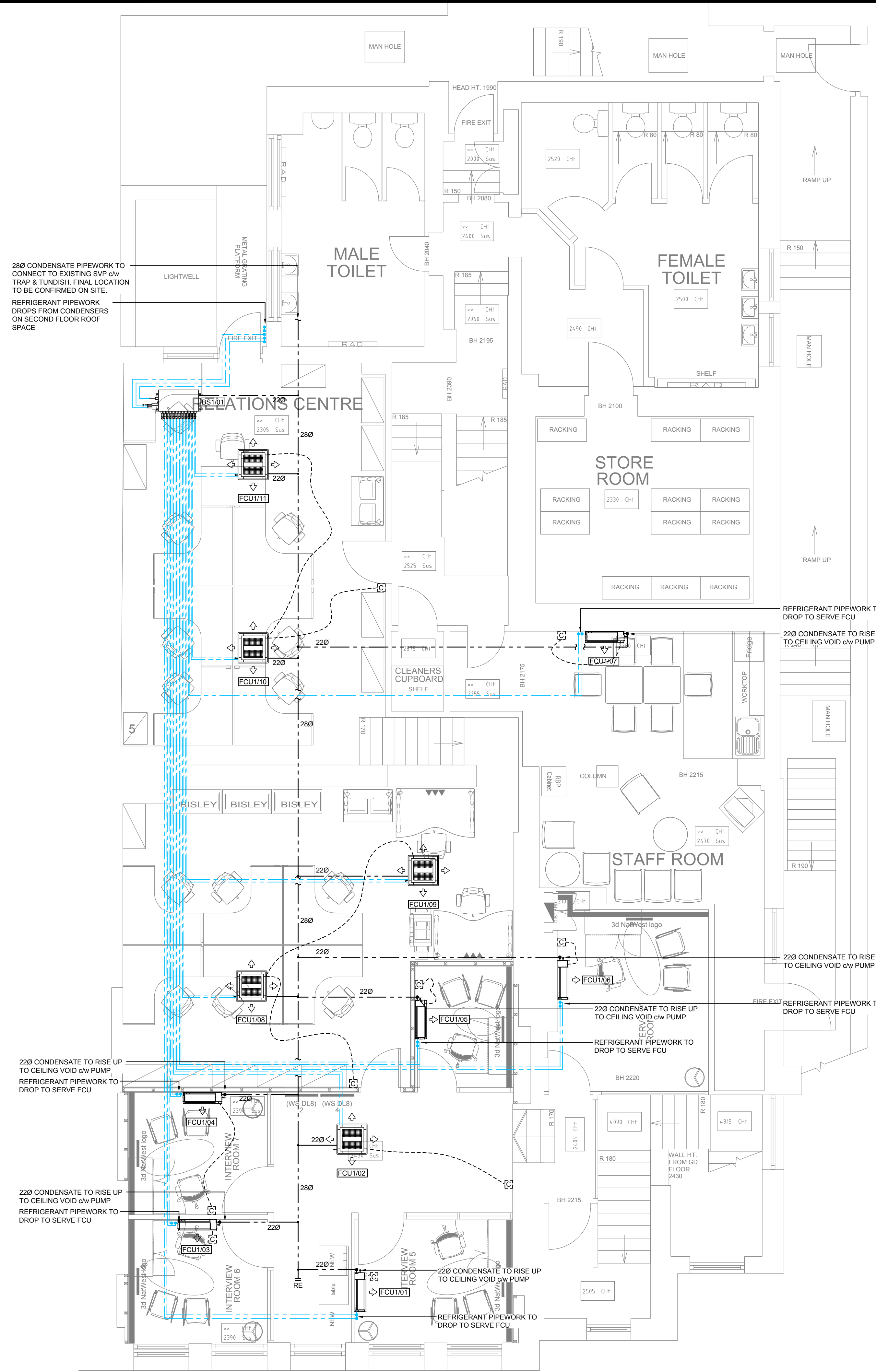
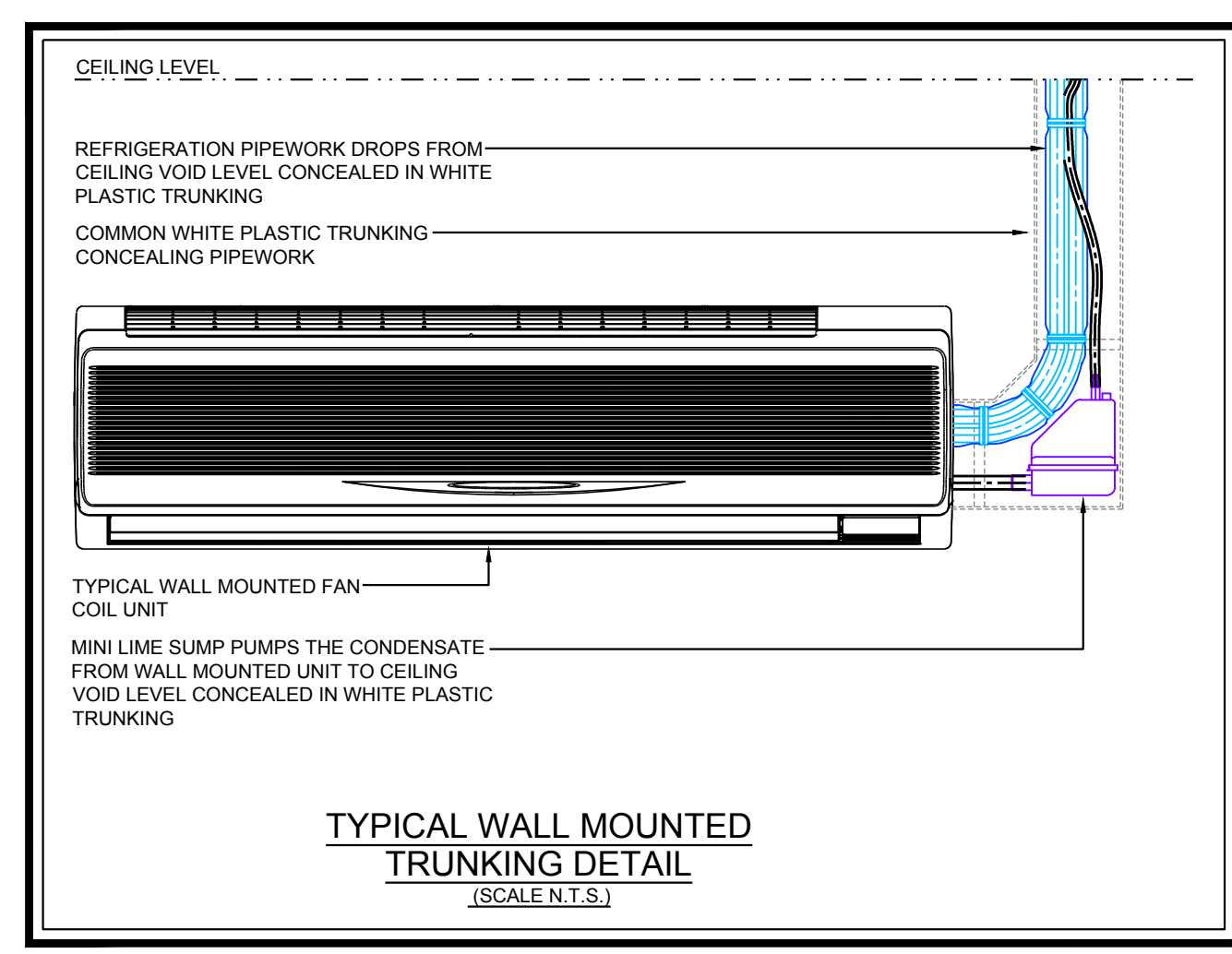
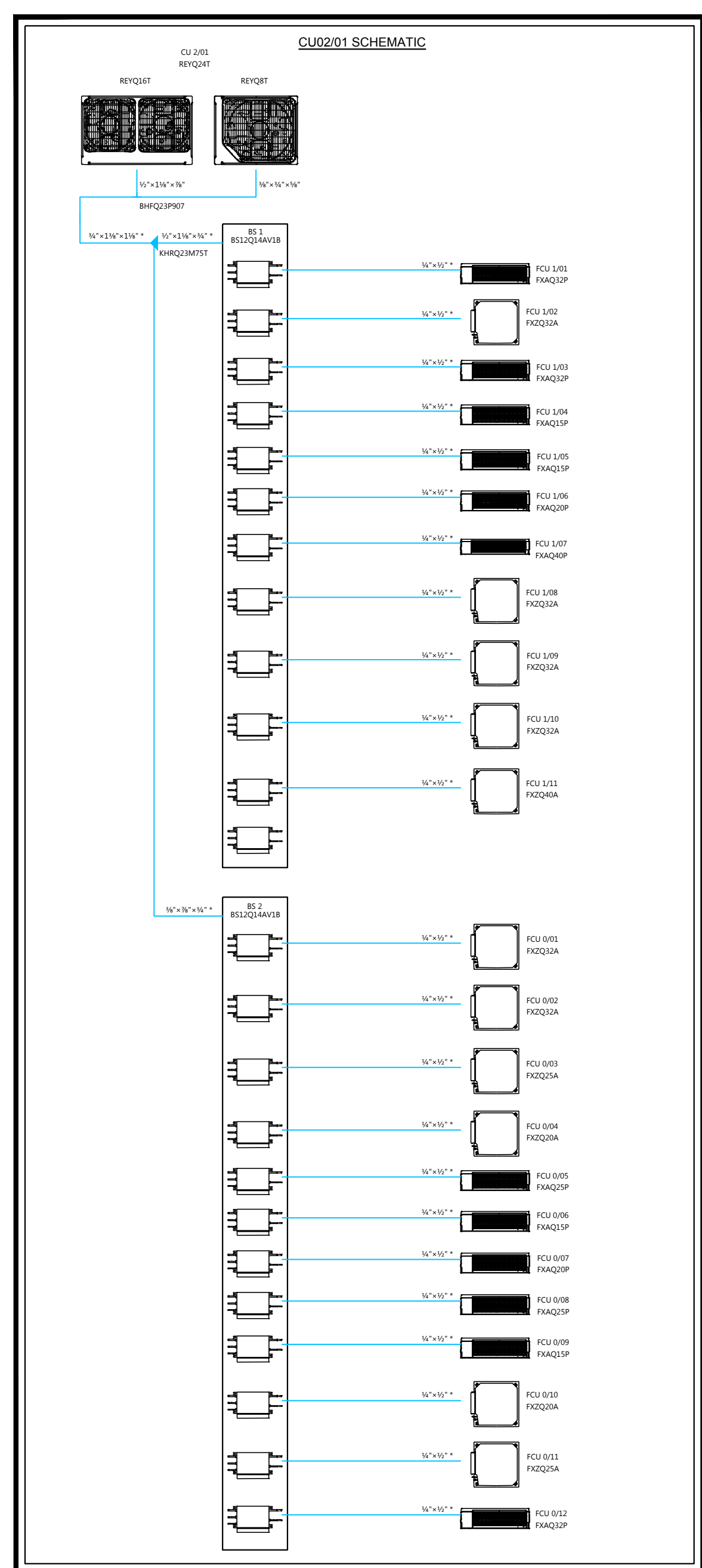
**FIRST FLOOR - BRANCH SELECTOR BOX SCHEDULE - DAIKIN CU02/01**

BS BOX REFERENCE	MODEL	TYPE	ELECTRICAL DETAILS			DIMENSIONS			WEIGHT (kg)	PIPE CONNECTIONS				
			POWER SUPPLY (Ø, Hz, V)	POWER INPUT (kW)	FUSE RATING (A)	HEIGHT (mm)	WIDTH (mm)	DEPTH (mm)		INDOOR LIQUID	INDOOR GAS	OUTDOOR LIQUID	OUTDOOR DISCHARGE	
BS0/01	BS12Q14V1 B	MULTI	1, 50, 230	0.129	5	298	820	430	38	3/8	7/8	5/8	1, 125	1, 125

**NOTES**

WHERE THE INDOOR UNIT PIPEWORK SIZES IN THIS TABLE EXCEED THE INDOOR CONNECTION SIZES TO THE FAN COIL UNIT, THE REDUCING JOINT PROVIDED WITH THE BS BOX WILL BE UTILISED.

WHERE A MULTI-BOX IS UTILISED THERE IS A REQUIREMENT FOR A CONNECTION TO A CONDENSATE LINE.



A	27.11.17	INITIAL ISSUE	NT
---	----------	---------------	----

**ARTHUR MCKAY**  
A servest group company

Warehouse W,  
Western Gateway,  
Royal Victoria Docks,  
London E16 1BD.

Tel : 0207 531 7250.  
Fax : 0207 531 7251.  
www.arthur-mckay.com.

Office Locations  
**Carlisle, Edinburgh, Glasgow, Leeds & London**

Client  
**RBS**  
The Royal Bank of Scotland Group

Project  
**SWISS COTTAGE,  
106 FINCHLEY ROAD**

Title  
**FIRST FLOOR  
COMFORT COOLING  
SERVICES LAYOUT**

Drawing Status  
**PRELIMINARY**

Designed by	NT	Date	NOV'17	Project No	-
Drawn by	CD	Scales @ A	1:50		
Drawing Number	55 00 101			Rev	<b>A</b>