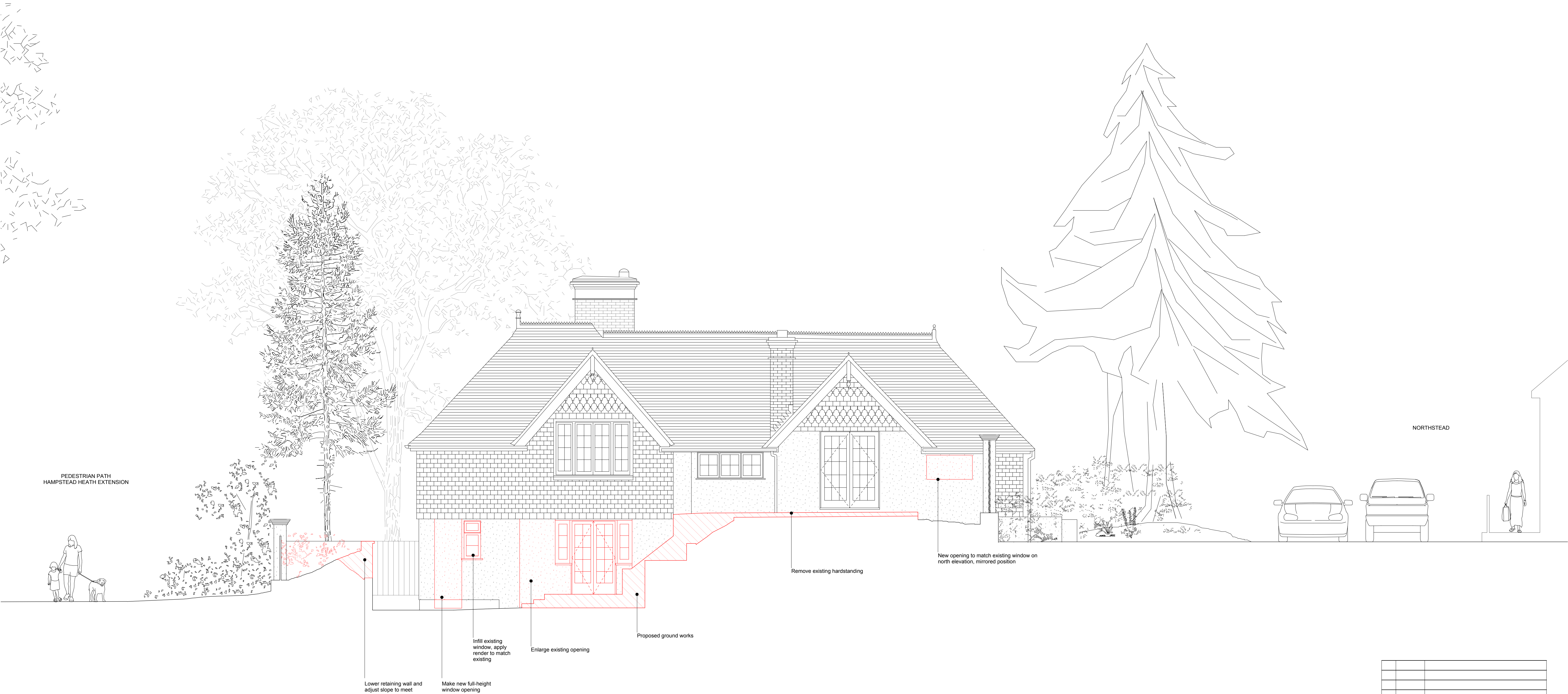


-	15.08.2017	Planning submission
Rev	Date	Description
Hayatsu Architects 36 Dunboyne Road London NW3 2YY t +44(0)77 6633 2206 takeshi@hayatsuarchitects.com www.hayatsuarchitects.co.uk		
PROJECT: THE LODGE, NORTH END AV		
JOB: 007		
TITLE: EXISTING EAST ELEVATION		
STATUS: STAGE 3		
DATE: 15.08.17		SCALE: 1:100(A3) 1:50(A1)
REV: -		NUMBER: 0301
DO NOT SCALE FROM THIS DRAWING. ALL DIMENSIONS ARE TO BE CHECKED ON SITE. THIS DRAWING IS TO BE READ IN CONJUNCTION WITH ALL CONSULTANTS INFORMATION		
DRAWN:KS		INSPECTED:TH



-	15.08.2017	Planning submission
Rev	Date	Description
		Hayatsu Architects 36 Dunboyne Road London NW3 2YY t +44(0)77 6633 2206 takeshi@hayatsuarchitects.com www.hayatsuarchitects.co.uk
PROJECT: THE LODGE, NORTH END AV		
JOB: 007		
TITLE: EXISTING SOUTH ELEVATION		
STATUS: STAGE 3		
DATE: 15.08.17	SCALE: 1:100(A3) 1:50(A1)	
REV: -	NUMBER: 0302	
DO NOT SCALE FROM THIS DRAWING. ALL DIMENSIONS ARE TO BE CHECKED ON SITE. THIS DRAWING IS TO BE READ IN CONJUNCTION WITH ALL CONSULTANTS INFORMATION		
DRAWN:KS		INSPECTED:TH



A	24.10.2017	Planning amendments
-	15.08.2017	Planning submission
Rev	Date	Description
Hayatsu Architects 36 Dunboyne Road London NW3 2YY t +44(0)77 6633 2206 takeshi@hayatsuarchitects.com www.hayatsuarchitects.co.uk		
PROJECT: THE LODGE, NORTH END AV		
JOB: 007		
TITLE: EXISTING WEST ELEVATION		
STATUS: STAGE 3		
DATE: 15.08.17		SCALE: 1:100(A3) 1:50(A1)
REV: A		NUMBER: 0303
DO NOT SCALE FROM THIS DRAWING. ALL DIMENSIONS ARE TO BE CHECKED ON SITE. THIS DRAWING IS TO BE READ IN CONJUNCTION WITH ALL CONSULTANTS INFORMATION		
DRAWN:KS		INSPECTED:TH