

4 Proposal / Interior design brief

Melia White House Hotel

Minor amendments in the Interior Refurbishment of the following areas of the White House Hotel Ground Floor.

Zone C: The Level Restaurant, meeting rooms and Business Center.

The current Listed Building Consent application is for minor amendments to the previous LBC App 2017/2840/L

The Interior refurbishment objective is to enlarge the area dedicated to the The Level Bar and Restaurant retaining the maximum number of multipurpose meeting rooms. The proposal is transforming the business center in a new meeting

The new restaurant is having 2 specialized areas: reception-waiting area, and a restaurant, for buffet, breakfast, and a la carte restaurant.

Lighting

In zone C all the lighting is adapted according to the new uses of the space. In order to provide a better lighting concept the incorporation of suspended lamps combined with floor and table lamps help to create different environments.

Wall Finishes

Regarding wall finishes the existing panelling is retained and painted in white wash, which in combination with the white painted walls gives a modern touch to the classic design. Where there are new walls a new panelling painted in white wash with lacquered skirting resembling the existing is proposed in order to give a unified impression of the whole design.

Also there are some areas with new molding laquered in “little greene colors of England”, as per interior design concept.

The only exception to the above is the buffet area where dark marble is proposed for the buffet and the columns and Apavisa Gold Pulpis porcelain tiling is proposed for the back wall.

Floor Finishes

In Zone C for the restaurants, reception and waiting areas is proposed also white washed timber panel flooring. White marble stone is proposed for the floor of the buffet and bar areas and industrial floor for the supporting areas. .

Interior New Doors

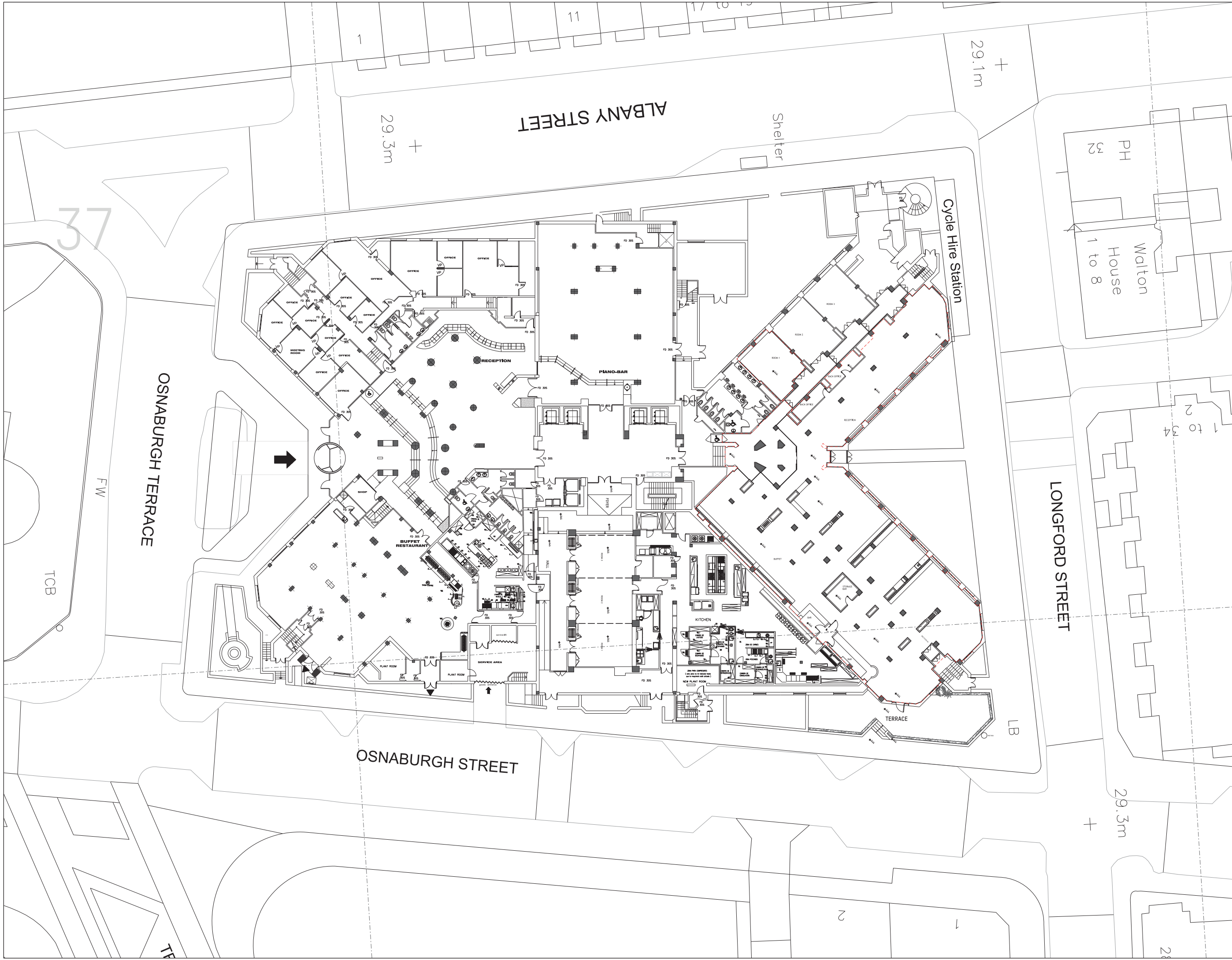
In Zone C several new doors are proposed. Those that lead to supporting areas resemble the existing timber doors.

New glass panel and sliding doors are proposed for the entrance hall connecting the lobby with restaurant and reception.

Furniture & Colour Palette

All the furniture is modern and with straight lines giving an elegant and sophisticated touches to the whole of the space and creating a comfortable interior space. The materials are noble like oak and warm generating carpets areas around the decorative chimneys.

The colour palette is neutral focus on the grey palette and the black colour. Also floor material such as dark marble will be used for table tops. The attention desk upholstered in leather along with the avant-garde lamps complete the look & feels that want to achieve.



DO NOT SCALE FROM THIS DRAWING. ALL DIMENSIONS ARE TO BE CHECKED ON SITE PRIOR TO BUILD. DIMENSIONAL DIFFERENCES TO BE CONFIRMED WITH THE ARCHITECT. THIS DRAWING IS TO BE READ IN CONJUNCTION WITH ALL CONSULTANTS INFORMATION, MACKAY AND PARTNERS LLP RETAIN THE COPYRIGHT OF ALL INFORMATION WITHIN THIS DRAWING.

----- SCOPE OF WORKS

1	New scope with minor amendments	29/01/18
Rev	Description	Date

Key Plan

Drawing Status

PLANNING

Issued only for purpose indicated

Mackay + Partners

ARCHITECTS & DESIGNERS

Florin Studios, Florin Court, 6-9 Charterhouse Square
London EC1M 6EY tel: +44 (0)207 808 1177
e mail: contact@mackayandpartners.co.uk

Job Title

White House Hotel

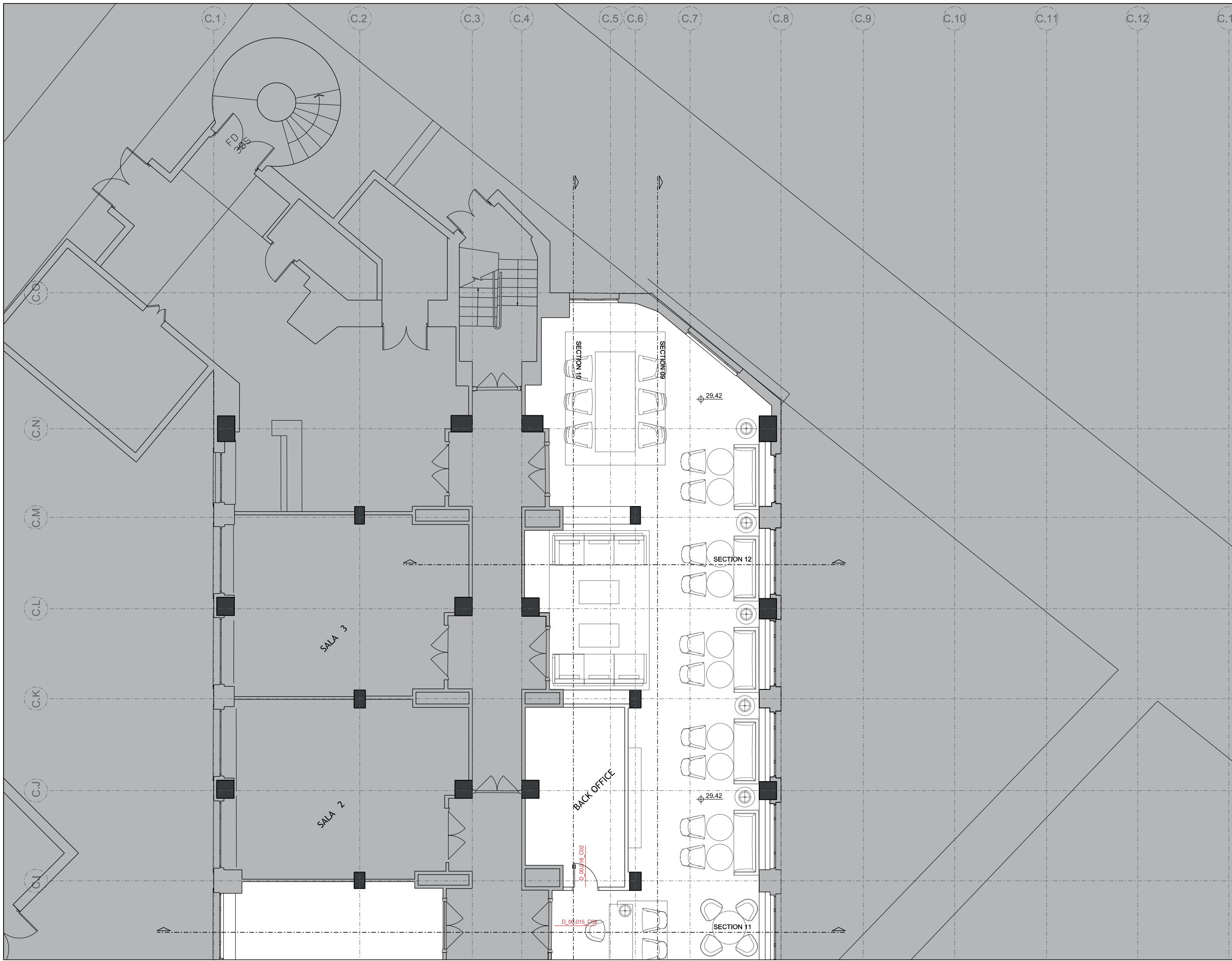
Drawing Title

**PROPOSAL
GROUND FLOOR
FULL PLAN**

Scale @ A1	1:200	Scale @ A3	1:400	Drawn by	MT
Date	05/05/2017	Checked by	KM	Rev.	1

Drawing No.

598.16_PL_0200_203



DO NOT SCALE FROM THIS DRAWING. ALL DIMENSIONS ARE TO BE CHECKED ON SITE PRIOR TO BUILD. DIMENSIONAL DIFFERENCES TO BE CONFIRMED WITH THE ARCHITECT. THIS DRAWING IS TO BE READ IN CONJUNCTION WITH ALL CONSULTANTS INFORMATION, MACKAY AND PARTNERS LLP RETAIN THE COPYRIGHT OF ALL INFORMATION WITHIN THIS DRAWING.

**PREVIOUS
PROPOSAL**

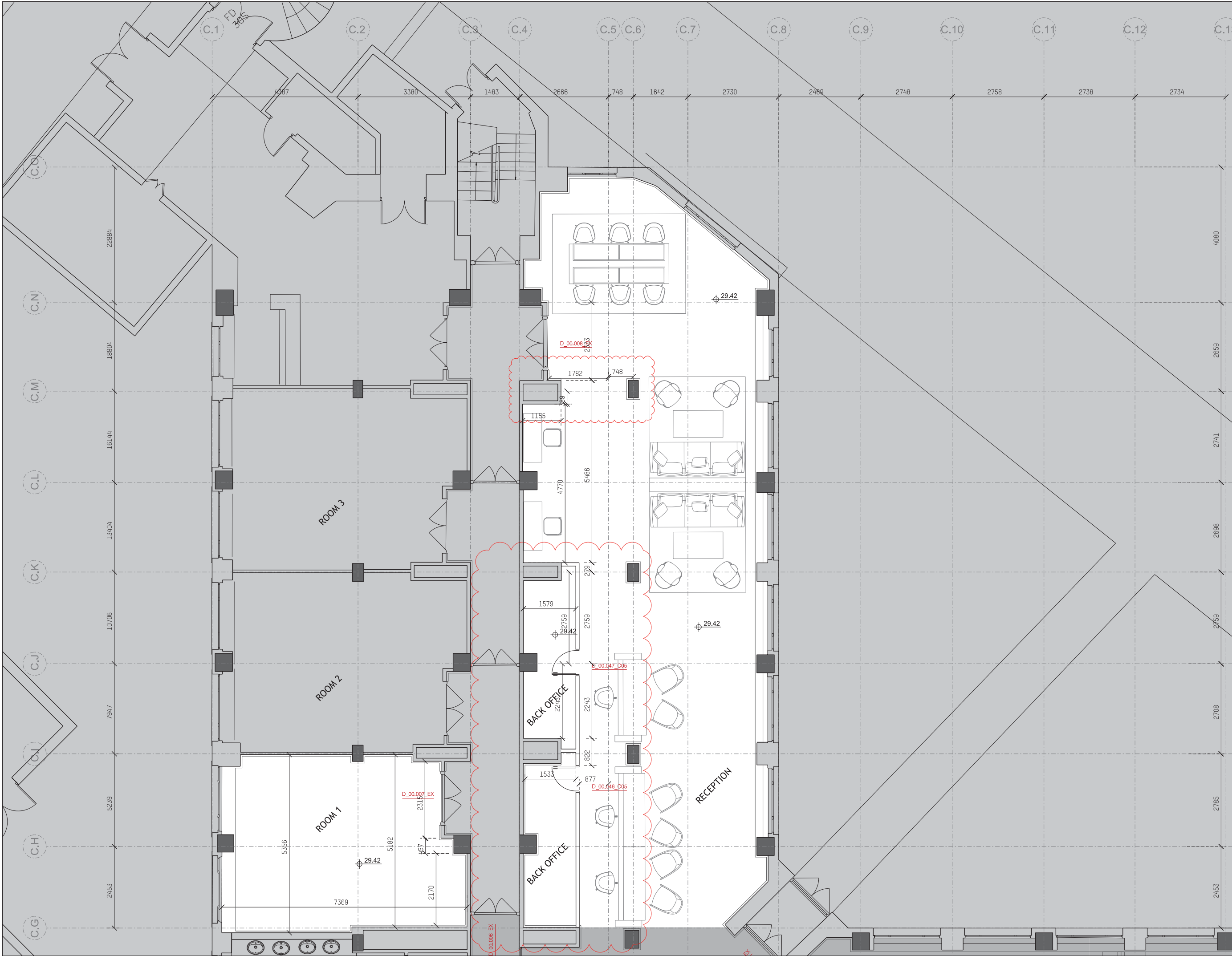
Rev	Description	Date

Drawing Status
PLANNING
Issued only for purpose indicated

**+Mackay
Partners**

ARCHITECTS & DESIGNERS
Florin Studios, Florin Court, 6-9 Charterhouse Square
London EC1M 6EY tel +44 (0)207 608 1177
e mail: contact@mackayandpartners.co.uk

Job Title	White House Hotel				
Drawing Title	PROPOSAL GROUND FLOOR / ZONE C3 PLAN				
Scale @ A1	1:50	Scale @ A3	1:100	Drawn by	MT
Date	05/05/2017	Checked by	KM	Rev.	-
Drawing No.	598.16_PL_0600_313				



DO NOT SCALE FROM THIS DRAWING. ALL DIMENSIONS ARE TO BE CHECKED ON SITE PRIOR TO BUILD. DIMENSIONAL DIFFERENCES TO BE CONFIRMED WITH THE ARCHITECT. THIS DRAWING IS TO BE READ IN CONJUNCTION WITH ALL CONSULTANT'S INFORMATION. MACKAY AND PARTNERS LLP RETAIN THE COPYRIGHT OF ALL INFORMATION WITHIN THIS DRAWING.

NEW PROPOSAL REVISION

1 Layout Changes 26/01/2018

Rev Description Date



Key Plan

Drawing Status

PLANNING

Issued only for purpose indicated

Mackay Partners

ARCHITECTS & DESIGNERS
Florin Studios, Florin Court, 6-9 Charterhouse Square
London EC1M 6EY tel +44 (0)207 608 1177
e mail: contact@mackayandpartners.co.uk

Job Title

White House Hotel

Drawing Title

**PROPOSAL
GROUND FLOOR / ZONE C3
PLAN**

Scale B A1 1:50 Scale B A3 1:100 Drawn by MT

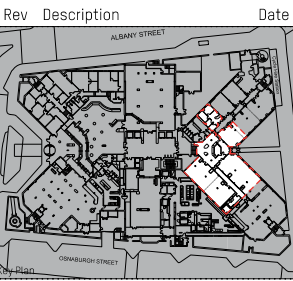
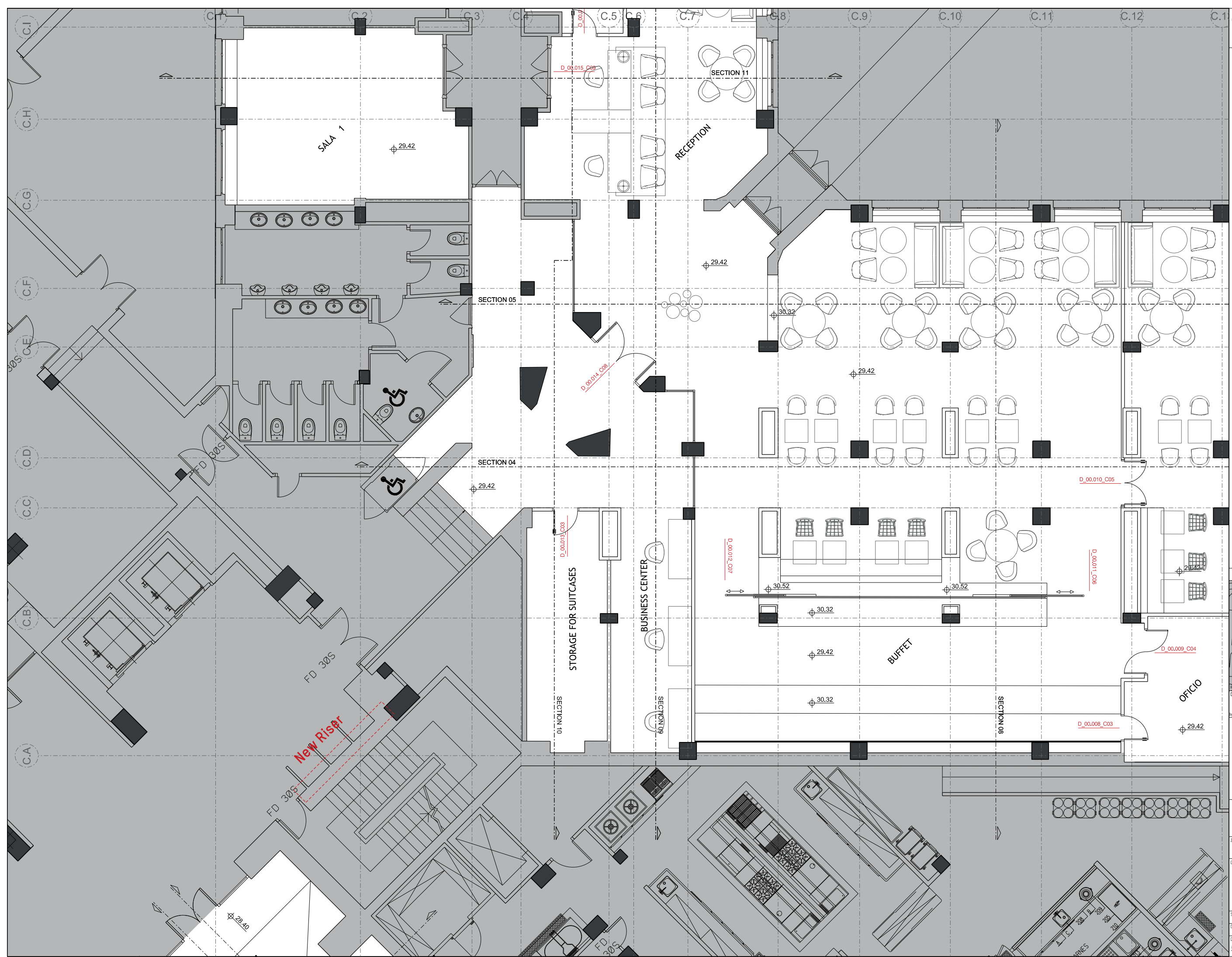
Date 28/07/2017 Checked by KM

Drawing No. 598.16_PL_0600_313

Rev. 1

DO NOT SCALE FROM THIS DRAWING. ALL DIMENSIONS ARE TO BE CHECKED ON SITE PRIOR TO BUILD. DIMENSIONAL DIFFERENCES TO BE CONFIRMED WITH THE ARCHITECT. THIS DRAWING IS TO BE READ IN CONJUNCTION WITH ALL CONSULTANTS INFORMATION. MACKAY AND PARTNERS LLP RETAIN THE COPYRIGHT OF ALL INFORMATION WITHIN THIS DRAWING.

PREVIOUS
PROPOSAL



Rev Description Date
Drawing Status
Issued only for purpose indicated

PLANNING
Mackay Partners

ARCHITECTS & DESIGNERS
Florin Studios, Florin Court, 8-9 Charterhouse Square
London EC1M 6EY tel +44 (0)207 608 1177
e mail: contact@mackayandpartners.co.uk

Job Title
White House Hotel

Drawing Title
**PROPOSAL
GROUND FLOOR / ZONE C2
PLAN**

Scale @ A1	1:50	Scale @ A3	1:100	Drawn by	MT
Date	05/05/2017	Checked by	KM		
Drawing No.	598.16_PL_0600_312	Rev.	-		

DO NOT SCALE FROM THIS DRAWING. ALL DIMENSIONS ARE TO BE CHECKED ON SITE PRIOR TO BUILD. DIMENSIONAL DIFFERENCES TO BE CONFIRMED WITH THE ARCHITECT. THIS DRAWING IS TO BE READ IN CONJUNCTION WITH ALL CONSULTANTS INFORMATION, MACKAY AND PARTNERS LLP RETAIN THE COPYRIGHT OF ALL INFORMATION WITHIN THIS DRAWING.

NEW
PROPOSAL
REVISION

1 Layout Changes 26/01/2018

Rev Description Date



Key Plan

Drawing Status

PLANNING

Issued only for purpose indicated

Mackay
Partners

ARCHITECTS & DESIGNERS

Florin Studios, Florin Court, 6-9 Charterhouse Square
London EC1M 6EY tel +44 (0)207 608 1177
e mail: contact@mackayandpartners.co.uk

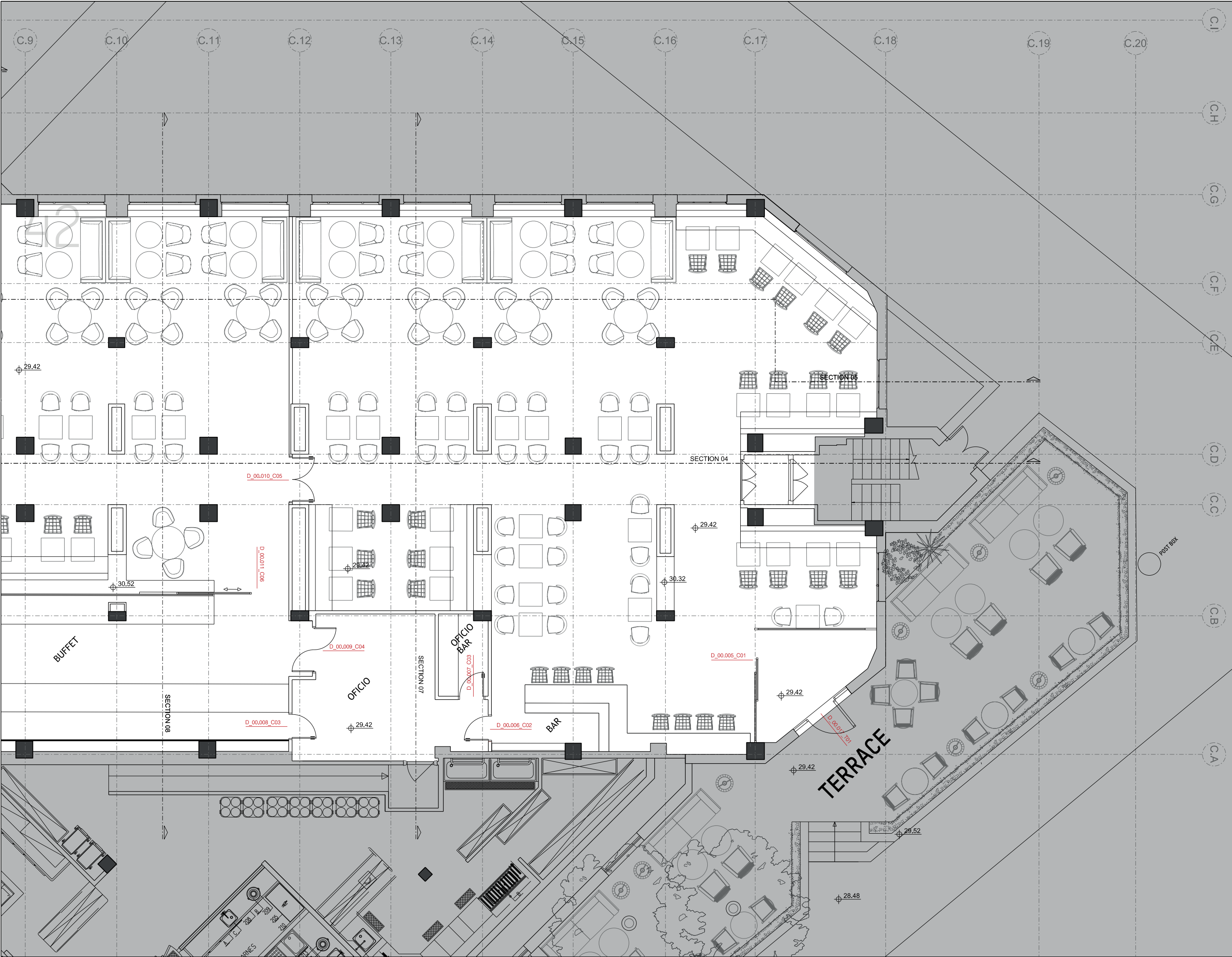
Job Title
White House Hotel

Drawing Title
PROPOSAL
GROUND FLOOR / ZONE C2
PLAN

Scale @ A1 1:50 Scale @ A3 1:100 Drawn by MT

Date 28/07/2017 Checked by KM

Drawing No. 598.16_PL_0600_312 Rev. 1



DO NOT SCALE FROM THIS DRAWING. ALL DIMENSIONS ARE TO BE CHECKED ON SITE PRIOR TO BUILD. DIMENSIONAL DIFFERENCES TO BE CONSIDERED WITH ALL CONSULTANTS INFORMATION. MACKAY AND PARTNERS LLP RETAIN THE COPYRIGHT OF ALL INFORMATION WITHIN THIS DRAWING.

**PREVIOUS
PROPOSAL**

Rev	Description	Date
1	ALBANY STREET	
2	CHANCERY STREET	
3	CHANCERY STREET	
4	CHANCERY STREET	
5	CHANCERY STREET	
6	CHANCERY STREET	
7	CHANCERY STREET	
8	CHANCERY STREET	
9	CHANCERY STREET	
10	CHANCERY STREET	
11	CHANCERY STREET	
12	CHANCERY STREET	
13	CHANCERY STREET	
14	CHANCERY STREET	
15	CHANCERY STREET	
16	CHANCERY STREET	
17	CHANCERY STREET	
18	CHANCERY STREET	
19	CHANCERY STREET	
20	CHANCERY STREET	
21	CHANCERY STREET	
22	CHANCERY STREET	
23	CHANCERY STREET	
24	CHANCERY STREET	
25	CHANCERY STREET	
26	CHANCERY STREET	
27	CHANCERY STREET	
28	CHANCERY STREET	
29	CHANCERY STREET	
30	CHANCERY STREET	
31	CHANCERY STREET	
32	CHANCERY STREET	
33	CHANCERY STREET	
34	CHANCERY STREET	
35	CHANCERY STREET	
36	CHANCERY STREET	
37	CHANCERY STREET	
38	CHANCERY STREET	
39	CHANCERY STREET	
40	CHANCERY STREET	
41	CHANCERY STREET	
42	CHANCERY STREET	
43	CHANCERY STREET	
44	CHANCERY STREET	
45	CHANCERY STREET	
46	CHANCERY STREET	
47	CHANCERY STREET	
48	CHANCERY STREET	
49	CHANCERY STREET	
50	CHANCERY STREET	
51	CHANCERY STREET	
52	CHANCERY STREET	
53	CHANCERY STREET	
54	CHANCERY STREET	
55	CHANCERY STREET	
56	CHANCERY STREET	
57	CHANCERY STREET	
58	CHANCERY STREET	
59	CHANCERY STREET	
60	CHANCERY STREET	
61	CHANCERY STREET	
62	CHANCERY STREET	
63	CHANCERY STREET	
64	CHANCERY STREET	
65	CHANCERY STREET	
66	CHANCERY STREET	
67	CHANCERY STREET	
68	CHANCERY STREET	
69	CHANCERY STREET	
70	CHANCERY STREET	
71	CHANCERY STREET	
72	CHANCERY STREET	
73	CHANCERY STREET	
74	CHANCERY STREET	
75	CHANCERY STREET	
76	CHANCERY STREET	
77	CHANCERY STREET	
78	CHANCERY STREET	
79	CHANCERY STREET	
80	CHANCERY STREET	
81	CHANCERY STREET	
82	CHANCERY STREET	
83	CHANCERY STREET	
84	CHANCERY STREET	
85	CHANCERY STREET	
86	CHANCERY STREET	
87	CHANCERY STREET	
88	CHANCERY STREET	
89	CHANCERY STREET	
90	CHANCERY STREET	
91	CHANCERY STREET	
92	CHANCERY STREET	
93	CHANCERY STREET	
94	CHANCERY STREET	
95	CHANCERY STREET	
96	CHANCERY STREET	
97	CHANCERY STREET	
98	CHANCERY STREET	
99	CHANCERY STREET	
100	CHANCERY STREET	

Drawing Status

PLANNING

Issued only for purpose indicated

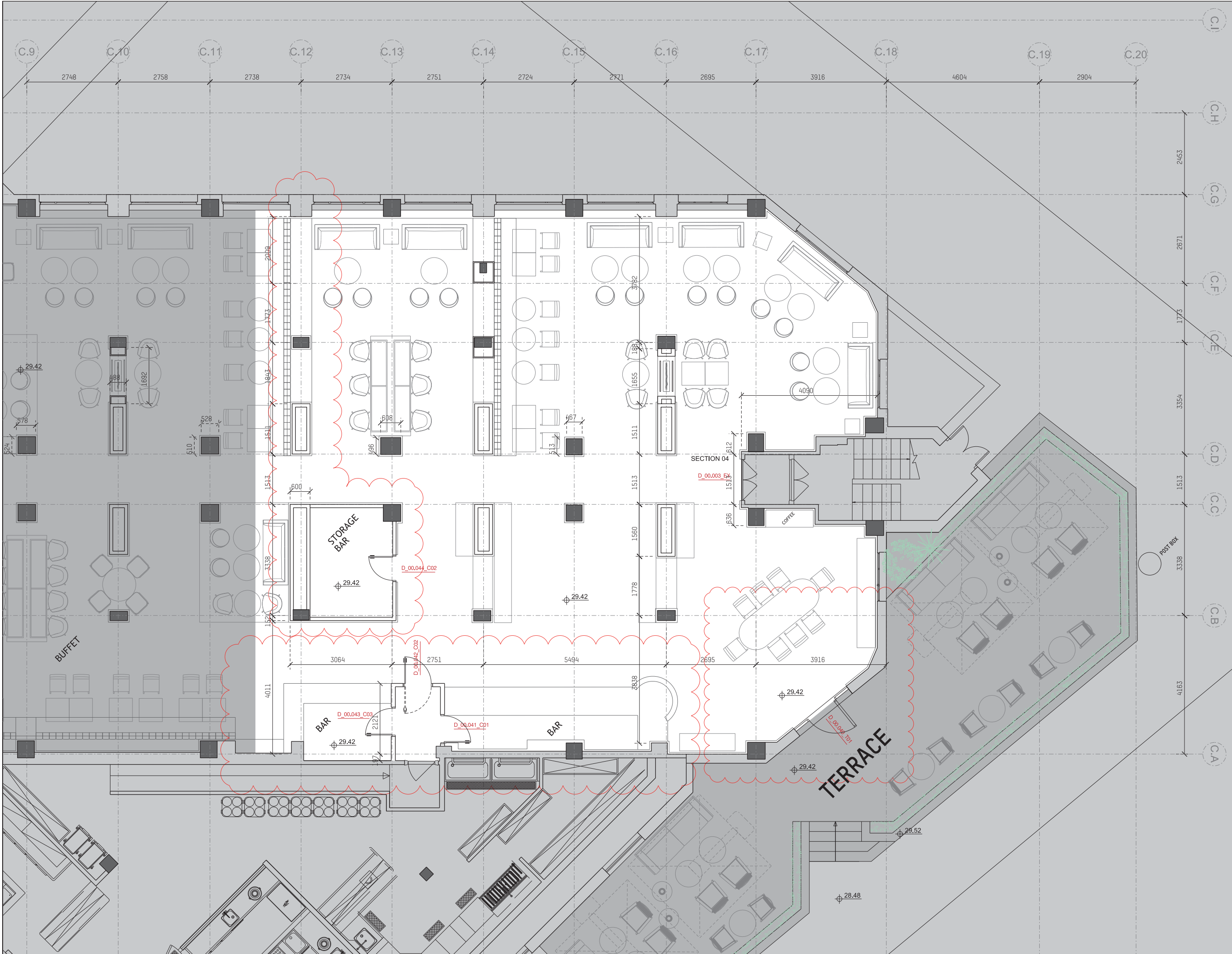
**Mackay
Partners**

ARCHITECTS & DESIGNERS
Florin Studios, Florin Court, 6-9 Charterhouse Square
London EC1M 6EY tel: +44 (0)207 608 1177
e mail: contact@mackayandpartners.co.uk

Job Title
White House Hotel

Drawing Title
**PROPOSAL
GROUND FLOOR / ZONE C1
PLAN**

Scale @ A1: 1:50	Scale @ A3: 1:100	Drawn by: MT
Date: 05/05/2017	Checked by: KM	
Drawing No.: 598.16_PL_0600_311	Rev.: -	

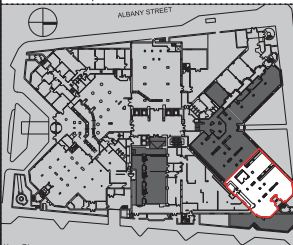


DO NOT SCALE FROM THIS DRAWING ALL DIMENSIONS ARE TO BE CHECKED ON SITE PRIOR TO BUILD. DIMENSIONAL DIFFERENCES TO BE CONFIRMED WITH THE ARCHITECT. THIS DRAWING IS TO BE READ IN CONJUNCTION WITH ALL CONSULTANTS INFORMATION. MACKAY AND PARTNERS LLP RETAIN THE COPYRIGHT OF ALL INFORMATION WITHIN THIS DRAWING.

NEW PROPOSAL REVISION

1 Layout Changes 26/01/2018

Rev Description Date



Key Plan

Drawing Status

PLANNING

Issued only for purpose indicated

**Mackay
+ Partners**

ARCHITECTS & DESIGNERS
Florin Studios, Florin Court, 6-9 Charterhouse Square
London EC1M 6EY tel +44 (0)207 608 1177
e mail: contact@mackayandpartners.co.uk

Job Title
White House Hotel

Drawing Title
**PROPOSAL
GROUND FLOOR / ZONE C1
PLAN**

Scale @ A1: 1:50 Scale @ A3: 1:100 Drawn by: MT

Date: 28/07/2017 Checked by: KM

Drawing No. 598.16_PL_0600_311 Rev. 1