

# SANDY BROWN

Consultants in Acoustics, Noise & Vibration

---

**Memo:** M005-A

**Date:** 11 May 2015

---

**Project:** 14126

**Pages:** 8

---

**From:** Brendon Shanks

**Reviewer:** Richard Muir

---

## 3 Belsize Place

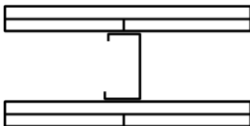
### *Internal partition sound insulation*

We have reviewed the proposed internal layout of partitions at 3 Belsize place. This memo provides recommended sound insulation performance for the internal partitions, where considered necessary. Details of standard partition types that would achieve the recommended sound insulation performance are also included.

The mark ups attached in Appendix A indicate the recommended sound insulation performance. This is given in terms a laboratory sound insulation performance ( $R_w$ ). There are no regulatory requirements for the sound insulation of the internal partitions. Therefore, our recommendations are based on achieving a good quality residential standard.

Table 1 provides details of standard partitions that can be used to achieve the recommended sound insulation performance. These partition build ups are examples and there are other constructions that may be used to achieve the recommended performance.

Table 1 Example partition constructions

Laboratory sound insulation ( $R_w$ )	Partition build up	Detail
45 dB	2 x 12.5 mm SoundBloc (or similar); 48 mm metal 'C' stud at 600 mm centres; 2 x 12.5 mm SoundBloc (or similar);	
45 dB	2 x 15 mm standard plasterboard; 48 mm metal 'C' stud at 600 mm centres; 2 x 15 mm standard plasterboard;	

55 Charterhouse Street, London EC1M 6HA  
Piccadilly House, 49 Piccadilly, Manchester M1 2AP  
16 West Terrace, South Queensferry EH30 9LL  
35 St Paul's Square, Birmingham, B3 1QX

T: +44 (0)20 7549 3500  
T: +44 (0)161 771 2020  
T: +44 (0)131 331 2020  
T: +44 (0)121 227 5020

[post@sandybrown.com](mailto:post@sandybrown.com)  
[www.sandybrown.com](http://www.sandybrown.com)

Sandy Brown Associates LLP

Registered in England & Wales No. OC 307504

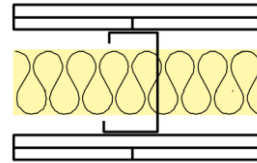
Registered Office: 55 Charterhouse Street, London EC1M 6HA

# SANDY BROWN

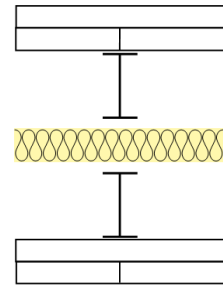
Consultants in Acoustics, Noise & Vibration

---

55 dB      2 x 15 mm SoundBloc (or similar);  
70 mm metal 'C' stud at 600 mm  
centres with 50 mm of mineral fibre  
insulation ( $\geq 22 \text{ kg/m}^3$ );  
2 x 15 mm SoundBloc (or similar);

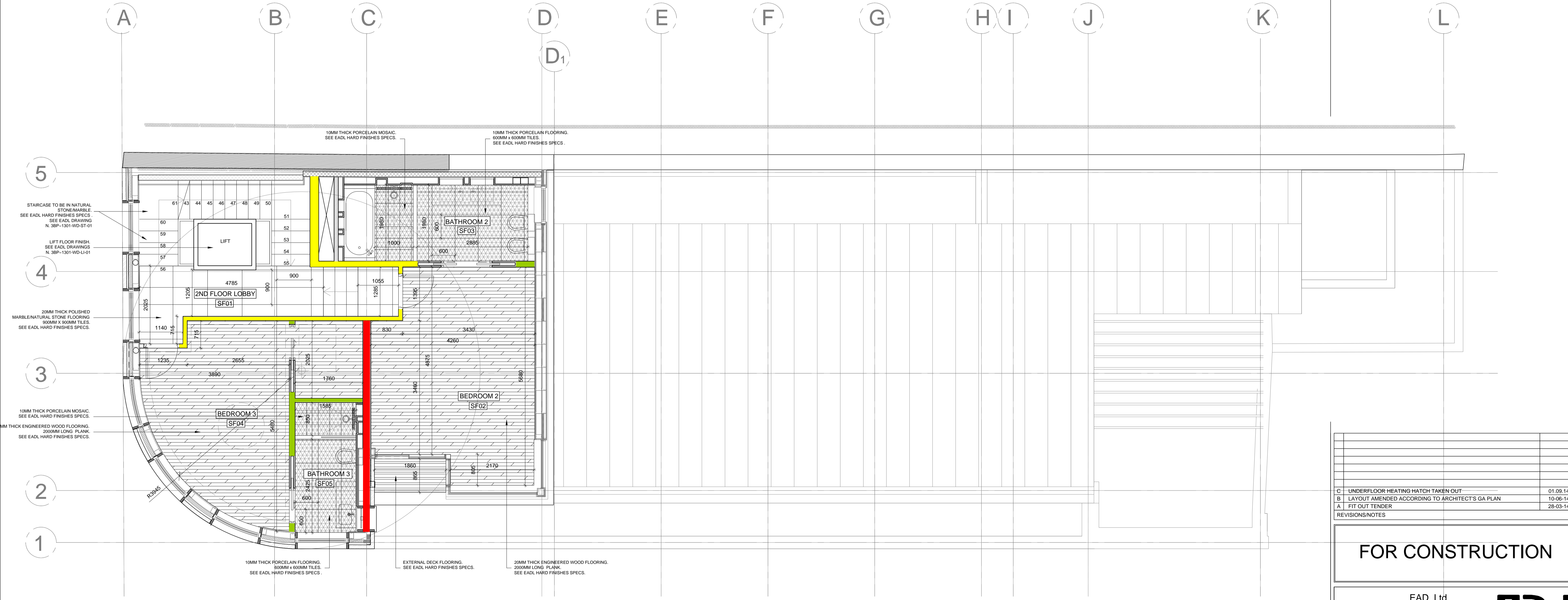
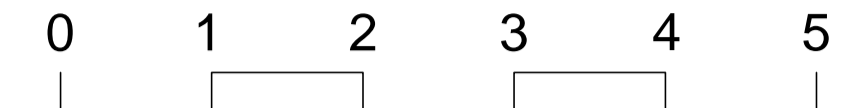


63 dB      2 x 15 mm SoundBloc (or similar);  
Double stud construction with  
140 mm cavity including 50 mm of  
mineral fibre insulation ( $\geq 22 \text{ kg/m}^3$ );  
2 x 15 mm SoundBloc (or similar);



TILES / MARBLE / NATURAL STONE SETTING POINT  
 DECKING / WOOD PLANK DIRECTION  
 TO BE AGREED ON SITE AND APPROVED BY EADL

Contractors must verify all dimensions on site before any works are commenced. This drawing remains the property of EZRA ATTIA DEVELOPMENTS LIMITED and may not be reproduced in any way without prior consent.  
 Toutes dimensions doivent être vérifiées par l'entrepreneur sur les lieux avant de commencer les travaux. Ce dessin appartient uniquement à la compagnie EZRA ATTIA DEVELOPMENTS LIMITED dont la reproduction en est interdite sans autorisation.



5  
 STAIRCASE TO BE IN NATURAL STONE/MARBLE. SEE EADL HARD FINISHES SPECS. SEE EADL DRAWING N. 3BP-1301-WD-ST-01.  
 LIFT FLOOR FINISH. SEE EADL DRAWINGS N. 3BP-1301-WD-LI-01.

4  
 20MM THICK POLISHED MARBLE/NATURAL STONE FLOORING. 900MM X 900MM TILES. SEE EADL HARD FINISHES SPECS.

3  
 10MM THICK PORCELAIN MOSAIC. SEE EADL HARD FINISHES SPECS.  
 20MM THICK ENGINEERED WOOD FLOORING. 2000MM LONG PLANK. SEE EADL HARD FINISHES SPECS.

2

1

C	UNDERFLOOR HEATING HATCH TAKEN OUT	01.09.14
B	LAYOUT AMENDED ACCORDING TO ARCHITECT'S GA PLAN	10.06.14
A	FIT OUT TENDER	28.03.14
REVISIONS/NOTES		

**FOR CONSTRUCTION**

EAD Ltd  
 3 Belsize Place  
 London NW3 5AL  
 Tel: 44(0)20 7431 2627  
 Fax: 44(0)20 7794 0198  
 email: studio@eadl.co.uk  
 www.eadl.co.uk



Client  
**GCM**

Project  
**3BP~1301**

Area  
**SECOND FLOOR**

Description  
**FLOOR FINISHES**

Scale	1:50@A1	Drawn	MC	Approved	-	Date	12.13	Project Number	-
Drawing Number	3BP-1301-ID-20-02	Revision	C	A	B	-	-	-	-

CAD File No. -  
 X-REF File Name -

1 SECOND FLOOR PLAN - FLOOR FINISHES\_  
 SCALE:1:50 @ A1

**Key**

- Rw 45 dB
- Rw 55 dB
- Rw 63 dB

FLOORING KEY	
	20MM THICK ENGINEERED WOOD FLOORING. 2000MM LONG PLANK. SEE EADL HARD FINISHES SPECS.
	20MM THICK POLISHED MARBLE/NATURAL STONE FLOORING. 900MM X 900MM TILES. SEE EADL HARD FINISHES SPECS.
	10MM THICK PORCELAIN FLOORING. 600MM x 600MM TILES. SEE EADL HARD FINISHES SPECS.
	10MM THICK PORCELAIN MOSAIC. SEE EADL HARD FINISHES SPECS.
	EXTERNAL DECK FLOORING. SEE EADL HARD FINISHES SPECS.