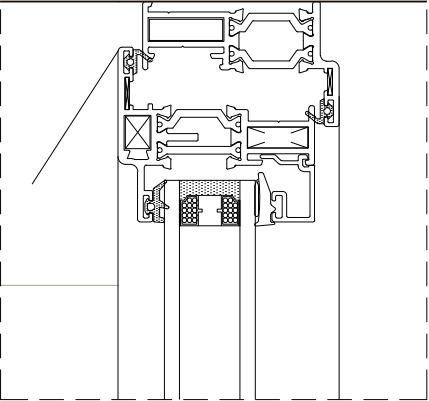
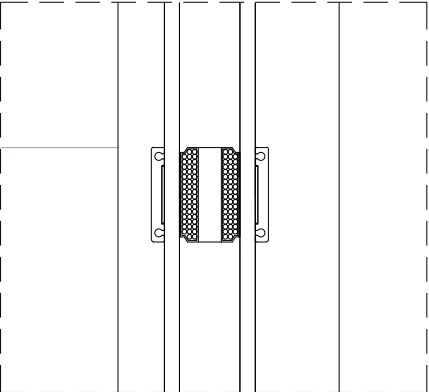


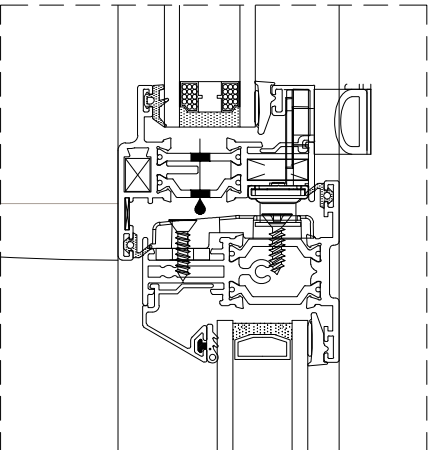
Alitherm Heritage windows to accommodate trickle ventilators to head detail



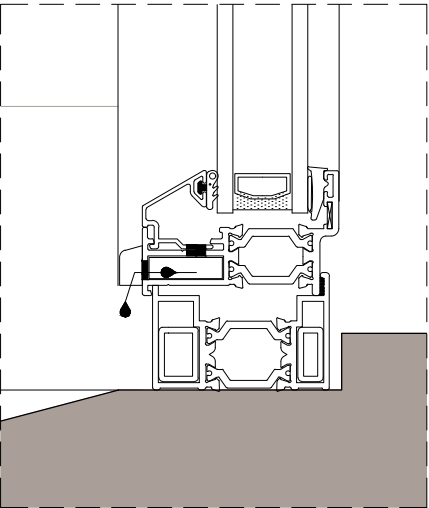
TYPICAL HEAD DETAIL



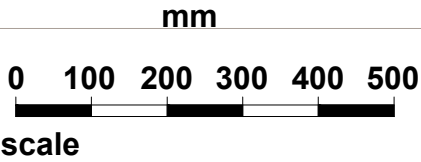
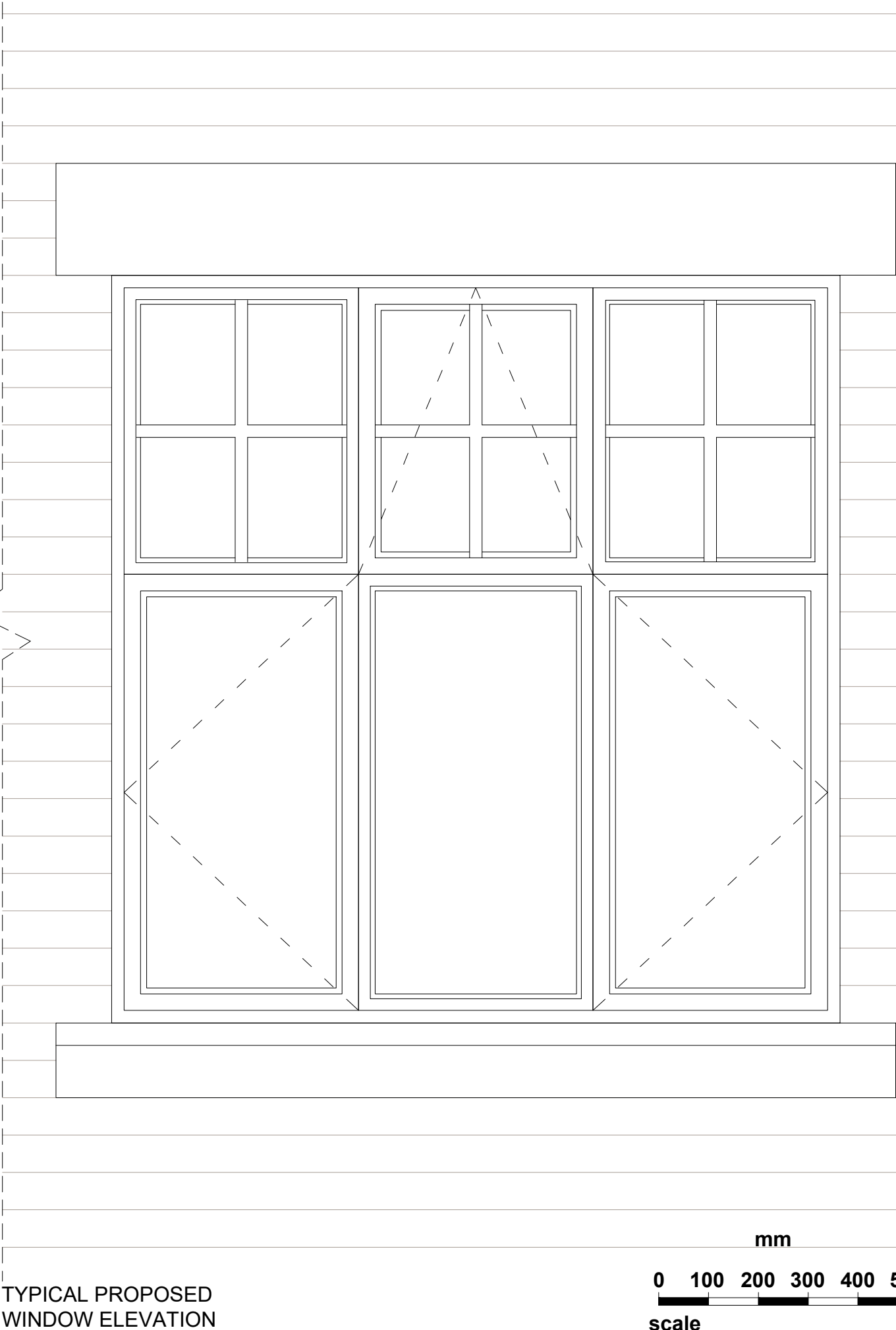
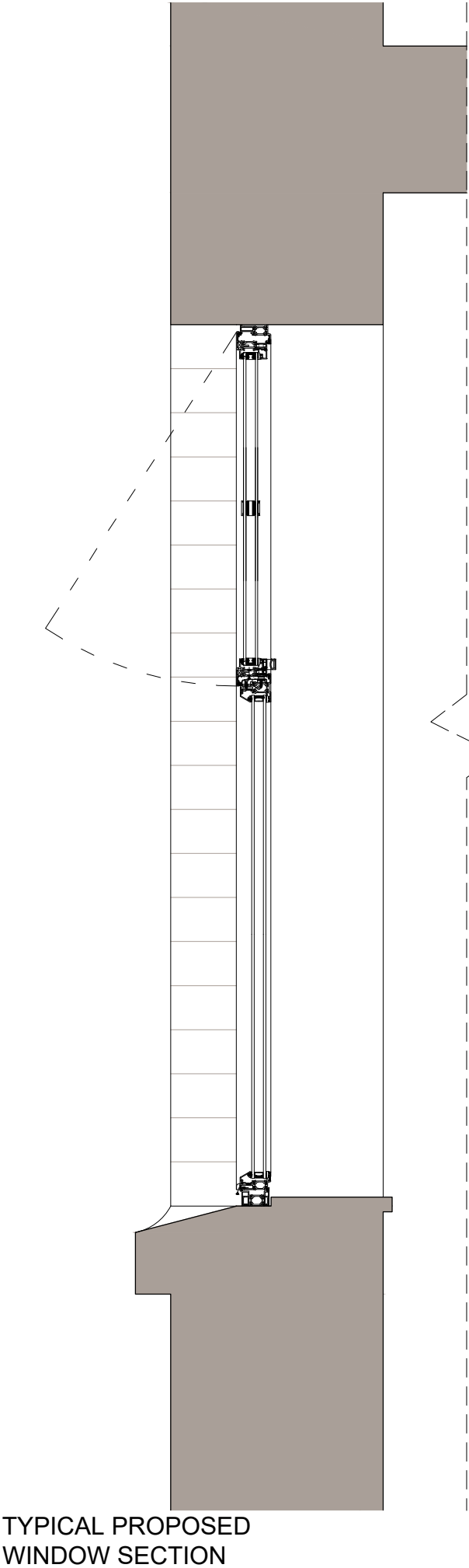
TYPICAL GLAZING BAR DETAIL



TYPICAL MULLION DETAIL



TYPICAL CILL DETAIL
Scale 1:2 @ A3



NOTE

THIS DRAWING IS TO BE READ IN CONJUNCTION WITH ALL OTHER RELEVANT DRAWINGS AND SPECIFICATIONS

THIS DRAWING HAS BEEN PREPARED FOR IDENTIFICATION PURPOSES ONLY. VERIFICATION OF DRAWN INFORMATION TO BE CARRIED OUT BY CONTRACTOR PRIOR TO OTHER USE.

Alitherm Heritage Windows

The replacement windows are to be Alitherm Heritage design with fixed light and open-out windows, internally and externally beaded.

All opening vents are hung on concealed stainless steel variable angle friction stays and fitted with cockscur/espagnolette locking mechanisms.

Internal beads and gaskets will accommodate 24, 28, 32 & 36mm units.

Thermal breaks are formed with polyamide strips PA 6.6 25 reinforced with glass fibre, fitted between aluminium extrusions. All profiles are extruded from aluminium alloy 6060/6063 T5/T6 and comply with the recommendations of BS EN 12020-2; 2001/BS 755-9: 2001.

Profiles are to be Electrostatic powder coat finished in white

Manufacturer:

Smart Systems Ltd. Arnolds Way, Yatton, North Somerset BS49 4QN.

Tel: 01934 876100. Fax: 01934 835169.

Email: sales@smartsystems.co.uk

Web: www.smartsystems.co.uk

Thermal:

All windows, in conjunction with a suitable glazing specification, to achieve an average project U-value to meet the current requirements of the approved Building Regulation Document L1/L2 for England and Wales.

A - Trickle vents noted 22/12/17

rev



- Milton House, 1 Milton Road, Peterborough PE2 8DZ Tel: 01733 344695
- 619 Holloway Road, London N19 5SS Tel: 020 7561 0189

project	no
Gilling Court, Belsize Grove	1735

drawing	no
WINDOW REPLACEMENTS - PROPOSED TYPICAL DETAILS	GA 03 /A

scale	date	drawn	checked
1:10 & 2 @A3	11.12.17	RE	