

6.4 AMENITY PLANTING

Careful selection of plant species will ensure year round interest with plants that will thrive in there designated areas.

Plant species for areas of extended shade such as Hosta spp, heuchera, bergenia and a variety of ferns will create dense planting beds of lush green and purple foliage.

Grasses and plant species with seasonal interest have been introduced to the Southern aspects that will recieve more sunlight. The movement of the grasses will help soften the built enviroment whilst the selection of purple flowers will provide a consistant colour theme throughtout the planting,

Species have been selected to be hardy and low maintenance to ensure sucessful establishment.



Hosta spp



Heuchera



Bergenia cordifolia



Dryopteris filix-mas



Theme image 01



Theme image 02



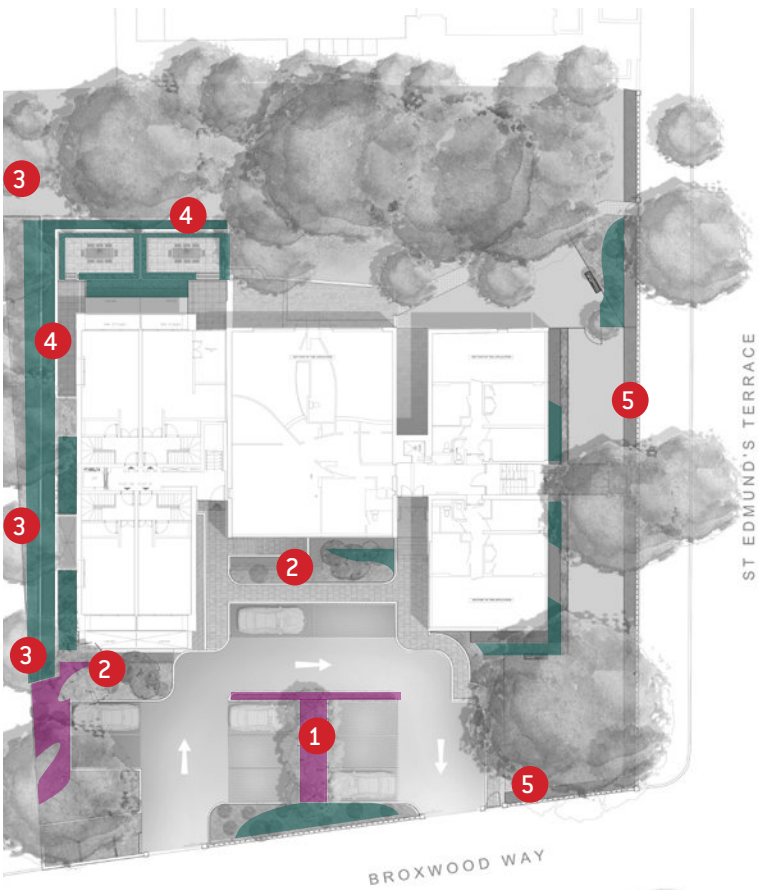
Liriope muscari



Cornus sanguinea



Agapanthus africanus





Stachys byzantina



Lavandula angustifolia



Festuca glauca 'Elijah Blue'



Salvia nemorosa



Allium hollandicum



Verbena bonariensis



Stipa tenuissima



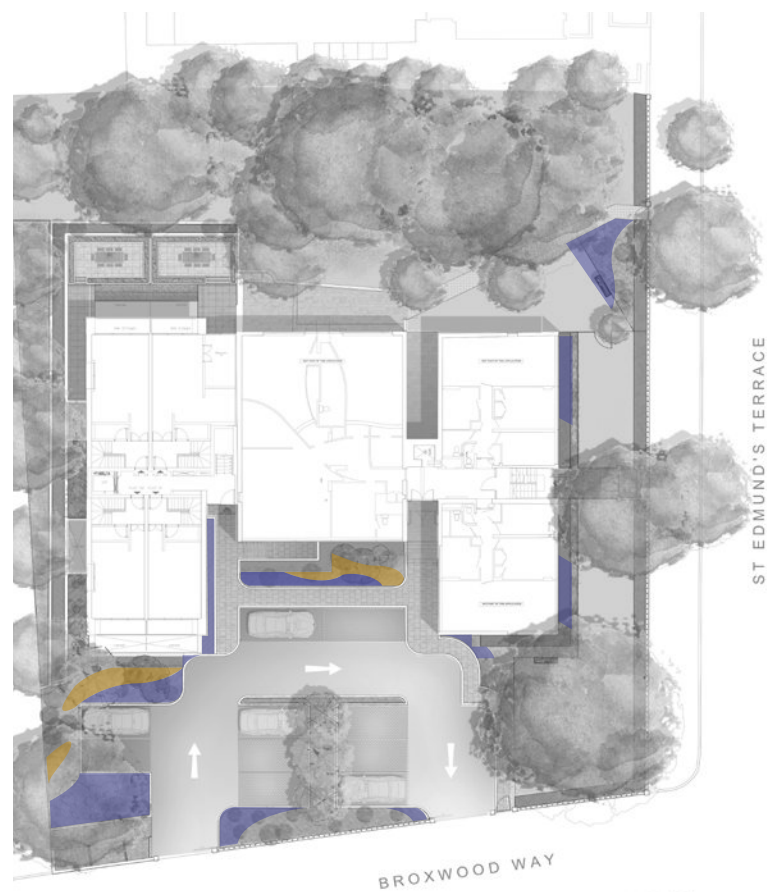
Deschampsia caespitosa



Theme image 01



Theme image 02



7.1 LANDSCAPE SUSTAINABILITY

Our approach at Barrie House is to design a sustainable whilst practical landscape scheme through use of well landscaped spaces that will endure.

The site currently offers little in the way of ecological value, therefore our proposal seeks to strengthen green infrastructure and biodiversity links through the site to Primrose Hill.

The general mix of species of trees and plants includes specimens that blossom, have fruit and flower at different times of the year, creating a long season of feeding and pollinating for invertebrates and birds. `

Grasses create a haven for bees and butterflies, as well as small mammals and insects. Bird boxes can also be integrated into the scheme when the trees have reached a suitable height to provide homes for protected species of winged beasts.



White Letter Hairstreak - London Priority species



Long Haired Mining Bee - London Priority Species



Winter Seedheads



Bird & Bat Boxes on trees

8.1 LANDSCAPE MANAGEMENT & MAINTENANCE

The principle management strategy for the site is for an easy to maintain landscape that uses durable and robust products and materials for enhanced longevity. The hard landscape materials will conform to British Standards as well as being easy to clean, maintain or replace if required.

Landscape proposals will be required to be maintained for a year minimum after completion, and thereafter will form part of a comprehensive management strategy. Planting beds will require bi-annual pruning and thinning to encourage new growth, and proposed trees will need annual checks to ensure health.



EXTERIOR ARCHITECTURE.

EXTERIOR ARCHITECTURE - LONDON OFFICE

Studio 1S, Hewlett House

Havelock Terrace

London SW8 4AS

+44 (0) 20 7978 2101

Office@exteriorarchitecture.com

EXTERIOR ARCHITECTURE - MANCHESTER OFFICE

Studio 537, The Royal Exchange

St. Ann's Square

Manchester M2 7DH

+44 (0) 161 850 8101

Officemcr@exteriorarchitecture.com