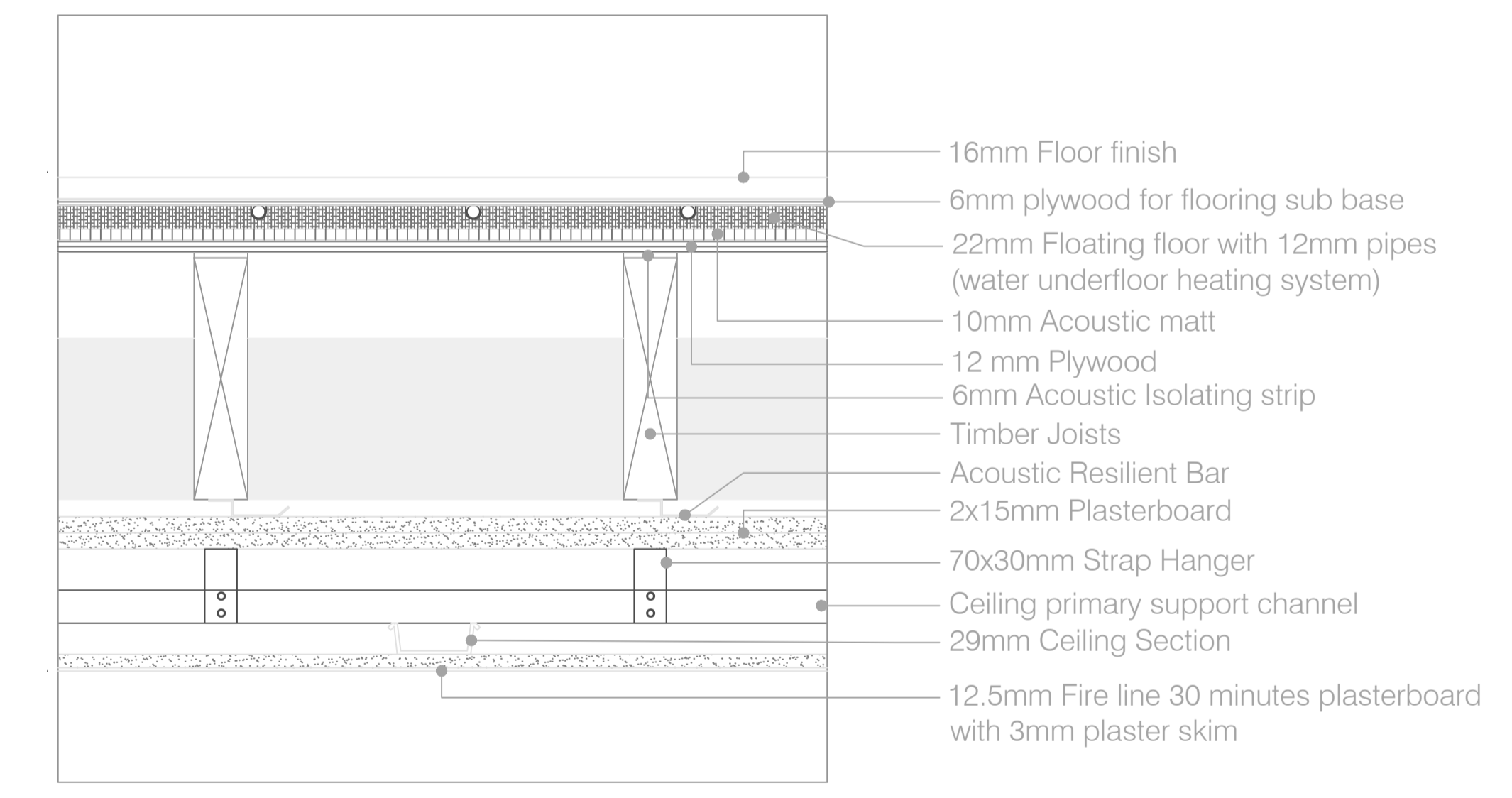


01 Detail _ Typical Wall Build-up Between Flats
 Building Regulation Performance = 45 DnT,w dB (Airborne Sound)
 LBC Prescribed Performance = 45 + 5 DnT,w dB (Airborne Sound)



02 Detail _ Typical Floor Build-up Between Flats
 Building Regulation Performance =
 45 DnT,w dB (airborne Sound) & 62 L'nT,w dB (Impact Sound)
 LBC Prescribed Performance =
 45 + 5 DnT,w dB (airborne Sound) & 62 + 5 L'nT,w dB (Impact Sound)

00 GA Section GG 1:50 @ A1

- NOTES
- Do not scale off these drawings. Dimensions govern.
 - All dimensions are given in millimetres (mm) unless otherwise noted.
 - All dimensions shall be verified on site before proceeding with the work contractor before construction and fabrication commences.
 - Workmanship and materials to be accordance with the relevant current British Standard Codes of Practice and the Local Authorities requirements.
 - During construction the contractor shall be responsible for maintaining the structure in a stable condition.
 - These drawings are to be read in conjunction with all other contract documentation and other consultants documentation.
 - If in doubt, ask!

Rev	Date	Reason for Issue	ch'd
PL-02	01-02-2018	Planning Conditions	JG
PL-01	01-02-2018	Planning Conditions	JG
PL-00	01-02-2018	Planning Conditions	JG

ambigram architects

The studio, 5 Great James Street, Bloomsbury
 London WC1N 3DB

www.ambigramarchitects.com
 info@ambigramarchitects.com

© Copyright 2015

ambigram architects ltd

Bayham Place

48-56 Bayham Place
 London NW1 0EU

Project

Condition 8 - Acoustic Details Between Dwellings

Title

AA-A-1702

Job number

July 2017

Date

0504

Drawing no

JP

Drawn

1:5 @A1

1:10 @A3

Scale

PL-02

Revision