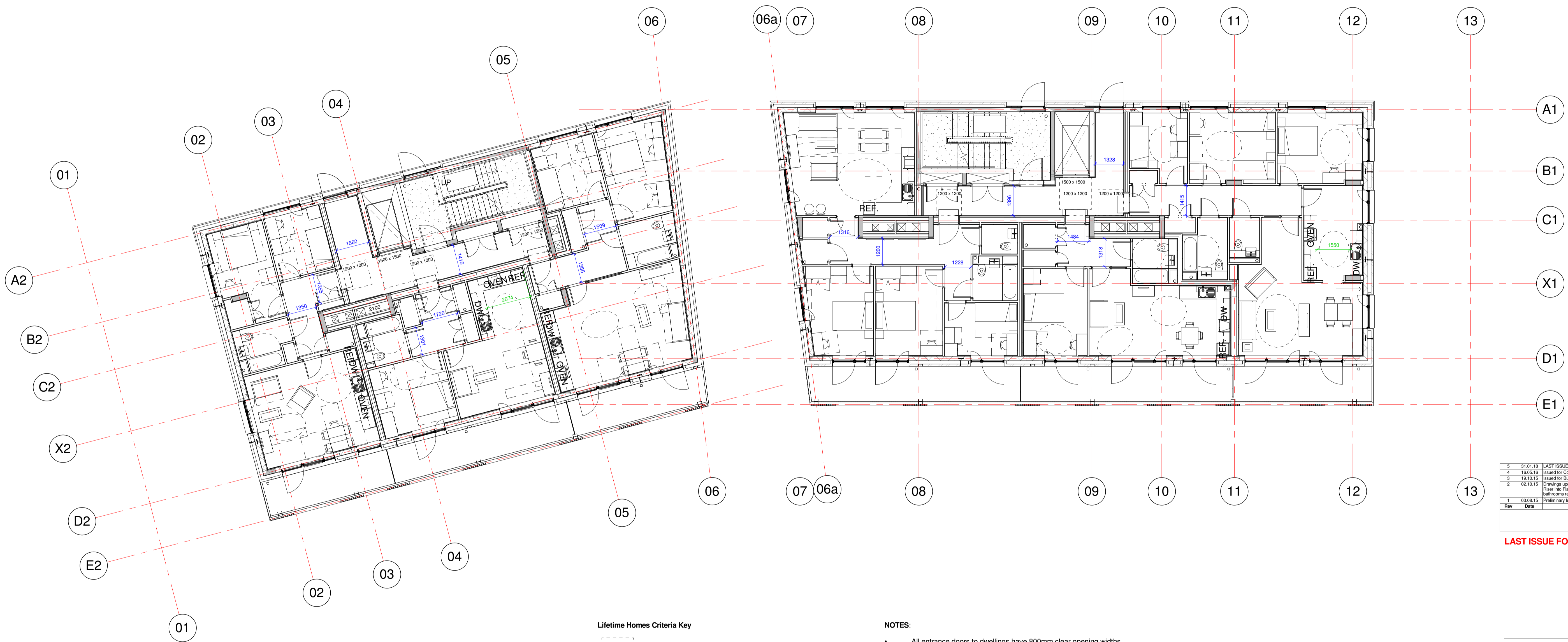


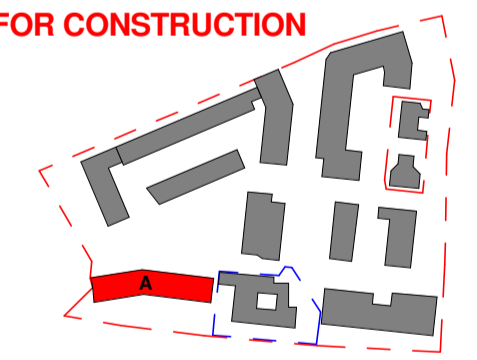
**Notes**  
 This drawing is © Archtype Ltd.  
 Check this drawing is the latest revision.  
 Do not scale from this drawing.  
 Do not use the information on this drawing without checking all dimensions on site.  
 Do not use any areas indicated for either valuation, purchase, sale or any other form of legally binding contract.  
 Do not reproduce any part of this drawing without prior written consent.  
 Report any discrepancies on this document to Archtype.  
 Read this drawing in conjunction with the associated models, specifications and related consultant's documents.  
 Equivalent products / materials may be Approved where the Employer's Requirements, Thermal Performance, Airtightness and any other specified performance requirements are met. Subject to Archtype "Acceptance".  
 All materials to be certified to comply with BS 14001 or BES6001 or be able to provide a Chain of Custody certificate in order to comply Code for Sustainable Homes. All timber species and sources used in this development are not to be listed on the CITES appendices for endangered or threatened species (appendix I, II or III).



Rev	Date	Description	IC	CD
5	31.01.18	LAST ISSUE FOR CONSTRUCTION	IC	RW
4	16.05.18	Issued for Construction	NA	IC
3	19.10.15	Issued for Building Control	CD	EB
2	02.10.15	Drawings updated to M&E requirements, including Service Riser into Flats G1a, G1b & R1. M&PFR voids in masonries, bathrooms reorganised to suit DWP & SE	IC	CD
1	03.08.15	Preliminary Issue	IC	CD

Revision Schedule

**LAST ISSUE FOR CONSTRUCTION**



LONDON: 020 7403 2888 WWW.ARCHITYPE.CO.UK HEREFORD: 01961 542 111

Client: Hill Partnership Ltd for Camden Council

Project: Agar Grove Block A

Drawing Title: Fifth Floor Furniture Layout Plan

Project Originator Type Role Phase Block Unit Unique ID  
T14011 - ART - DR - A - 1a A 00 - GA-755

Status: Code Suitability Description  
A Issued for Construction





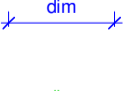
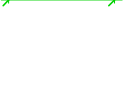
Revision: Code Revision Description  
Z5 Revision description as above

Scale: 1 : 100 @ A1 Date: 02 Feb 15

Drawn by: IC Checked by: CD  
Internal Project Ref: 8090 Model Ref: AG-RAC2015-A-A

5 Fifth Floor Furniture Plan  
1 : 100

**Lifetime Homes Criteria Key**

-  1500 x 1500mm - landing outside lift and communal entrances
-  1200 x 1200mm - landing outside dwelling entrances
-  1500mm dia - turning circle
-  1400 x 1700mm - turning ellipse
-  Corridor width dimension
-  Kitchen width dimension

**NOTES:**

- All entrance doors to dwellings have 800mm clear opening widths - refer to CD-200 series for window and door schedules.
- All internal doors within dwellings have 750mm min. clear opening widths - refer to CD-210 series for window and door schedules.