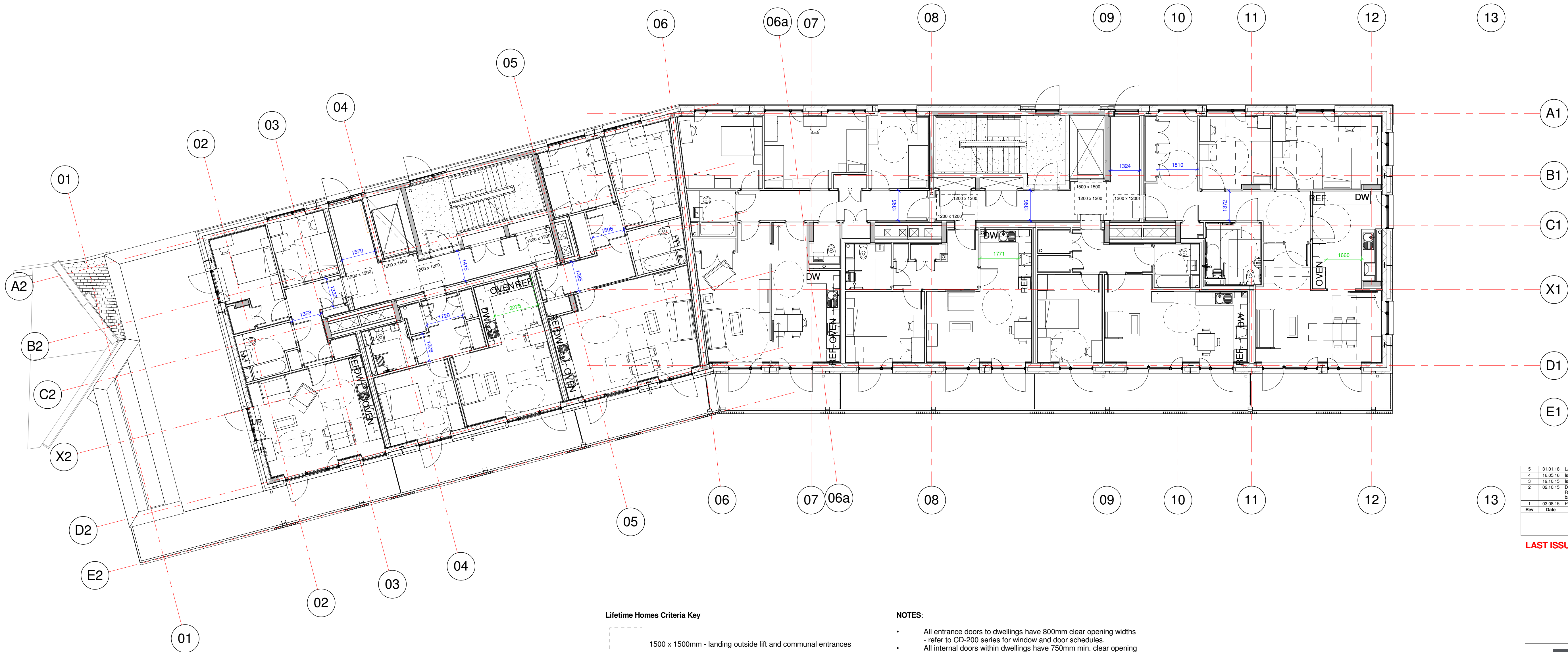


Notes

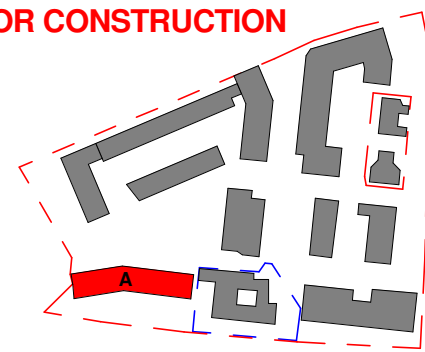
This drawing is © Archtype Ltd.
Check this drawing is the latest revision.
Do not scale from this drawing.
Do not use the information on this drawing without checking all dimensions on site.
Do not use any areas indicated for either valuation, purchase, sale or any other form of legally binding contract.
Do not reproduce any part of this drawing without prior written consent.
Report any discrepancies on this document to Archtype.
Read this drawing in conjunction with the associated models, specifications and related consultant's documents.
Equivalent products / materials may be Approved where the Employer's Requirements, Thermal Performance, Airtightness and any other specified performance requirements are met. Subject to Archtype "Acceptance".
All materials to be certified to comply with BS 14001 or BS6001 or be able to provide a Chain of Custody certificate in order to comply Code for Sustainable Homes. All timber species and sources used in this development are not to be listed on the CITES appendices for endangered or threatened species (appendix I, II or III).



5	31.01.18	LAST ISSUE FOR CONSTRUCTION	IC	RW
4	16.05.16	Issued for Construction	NA	IC
3	19.10.15	Issued for Building Control	CD	EB
2	02.10.15	Drawings updated to M&E requirements, including Service Rise into Flats G1a, G1b & R1, M&E voids in masonries, bathrooms reorganised to suit DWP & SE	IC	CD
1	03.08.15	Preliminary Issue	IC	CD
Rev	Date	Description	Drawn	Checked

Revision Schedule

LAST ISSUE FOR CONSTRUCTION



LONDON: 020 7403 2889 WWW.ARCHTYPE.CO.UK HEREFORD: 01981 542 111

Client: Hill Partnership Ltd for Camden Council

Project: Agar Grove Block A

Drawing Title: Third Floor Furniture Layout Plan

Project	Originator	Type	Role	Phase	Block	Unit	Unique ID
T14011	ART	DR	A	1a	A	00	GA-753

Status:	Code	Suitability	Description
	A	Issued for Construction	

Revision:	Code	Revision	Description
	Z5	Revision description as above	

Scale:	1 : 100 @ A1	Date:	02 Feb 15
--------	--------------	-------	-----------

Drawn by:	IC	Checked by:	CD
-----------	----	-------------	----

Internal Project Ref:	8090	Model Ref:	AG-RAC2015-A-A
-----------------------	------	------------	----------------

Lifetime Homes Criteria Key

- 1500 x 1500mm - landing outside lift and communal entrances
- 1200 x 1200mm - landing outside dwelling entrances
- 1500mm dia - turning circle
- 1400 x 1700mm - turning ellipse

dim Corridor width dimension

dim Kitchen width dimension

NOTES:

- All entrance doors to dwellings have 800mm clear opening widths - refer to CD-200 series for window and door schedules.
- All internal doors within dwellings have 750mm min. clear opening widths- refer to CD-210 series for window and door schedules.

3 Third Floor Furniture Plan
1 : 100