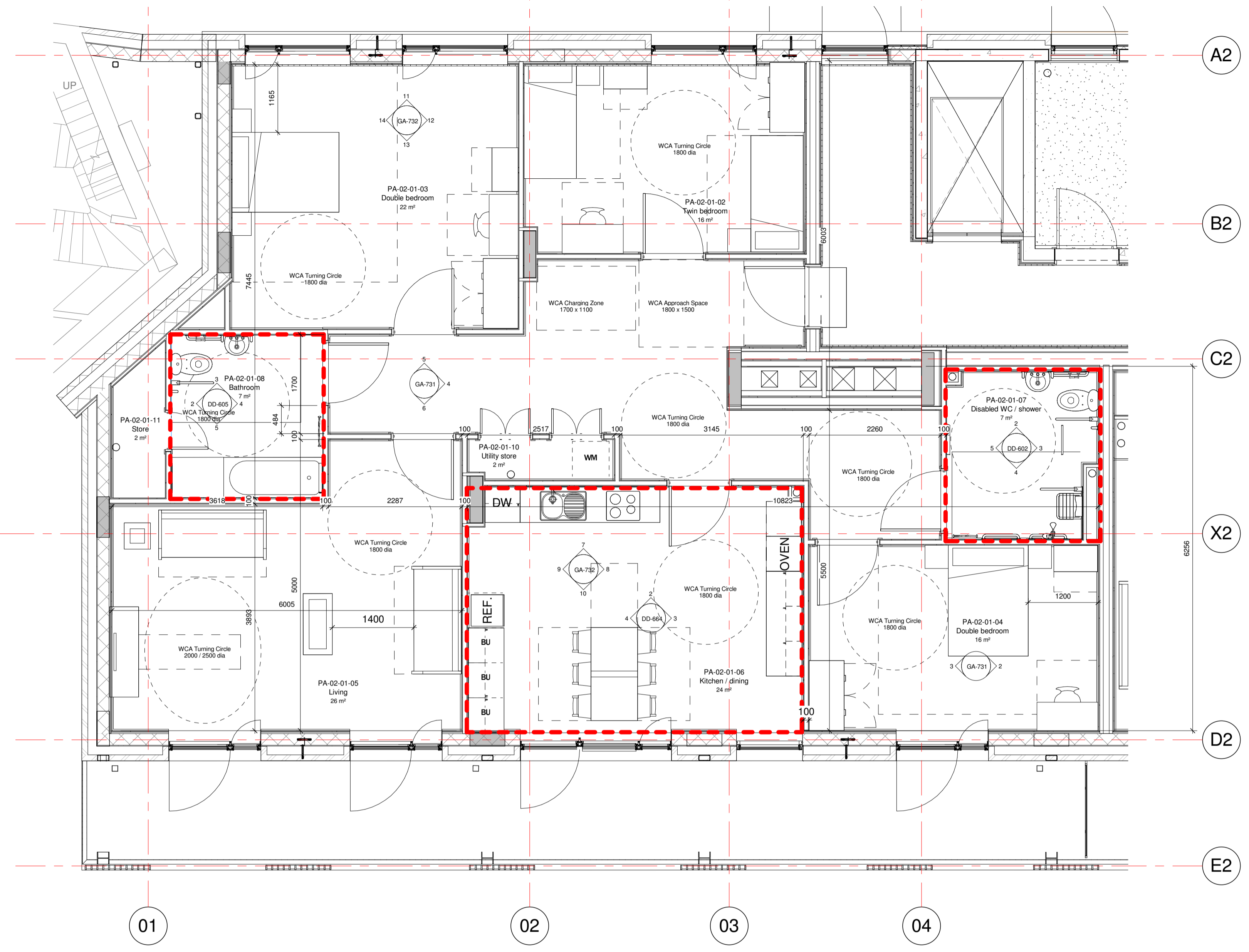
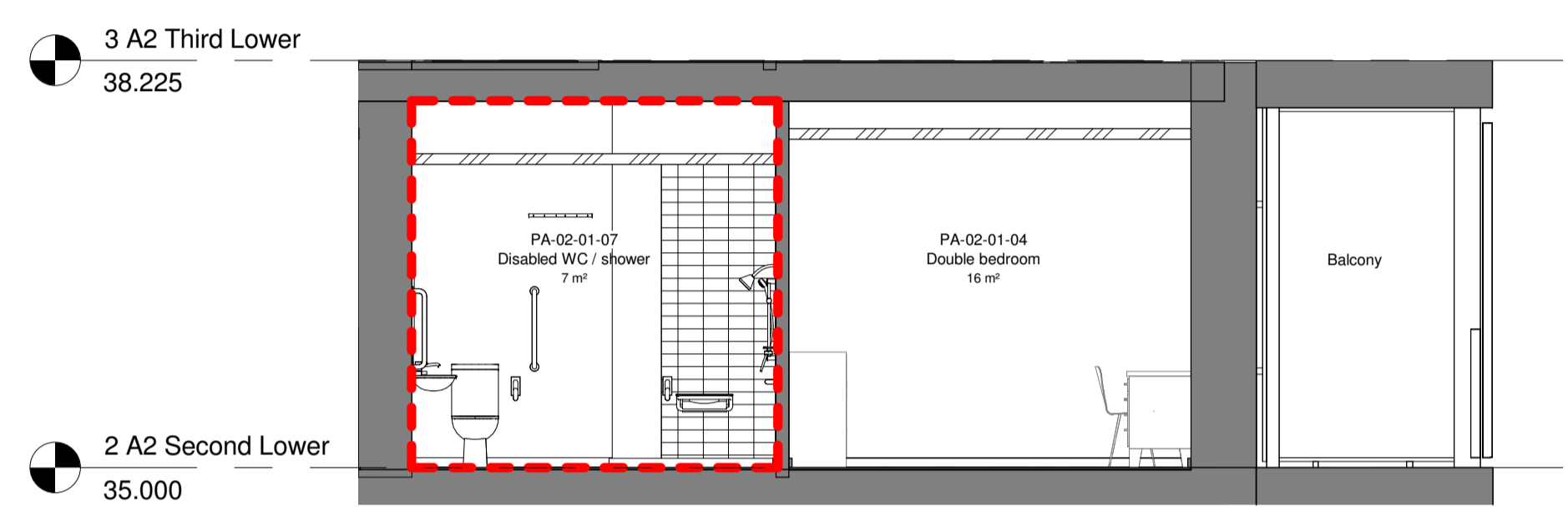


Notes
 This drawing is © Archtype Ltd.
 Check this drawing is the latest revision.
 Do not scale from this drawing.
 Do not use the information on this drawing without checking all dimensions on site.
 Do not use any areas indicated for either valuation, purchase, sale or any other form of legally binding contract.
 Do not reproduce any part of this drawing without prior written consent.
 Report any discrepancies on this document to Archtype.
 Read this drawing in conjunction with the associated models, specifications and related consultant's documents.
 Equivalent products / materials may be Approved where the Employer's Requirements, Thermal Performance, Airtightness and any other specified performance requirements are met. Subject to Archtype's "Acceptance".
 All materials to be certified to comply with BS 14001 or BES6001 or be able to provide a Chain of Custody certificate in order to comply Code for Sustainable Homes. All timber species and sources used in this development are not to be listed on the CITES appendices for endangered or threatened species (appendix I, II or III).

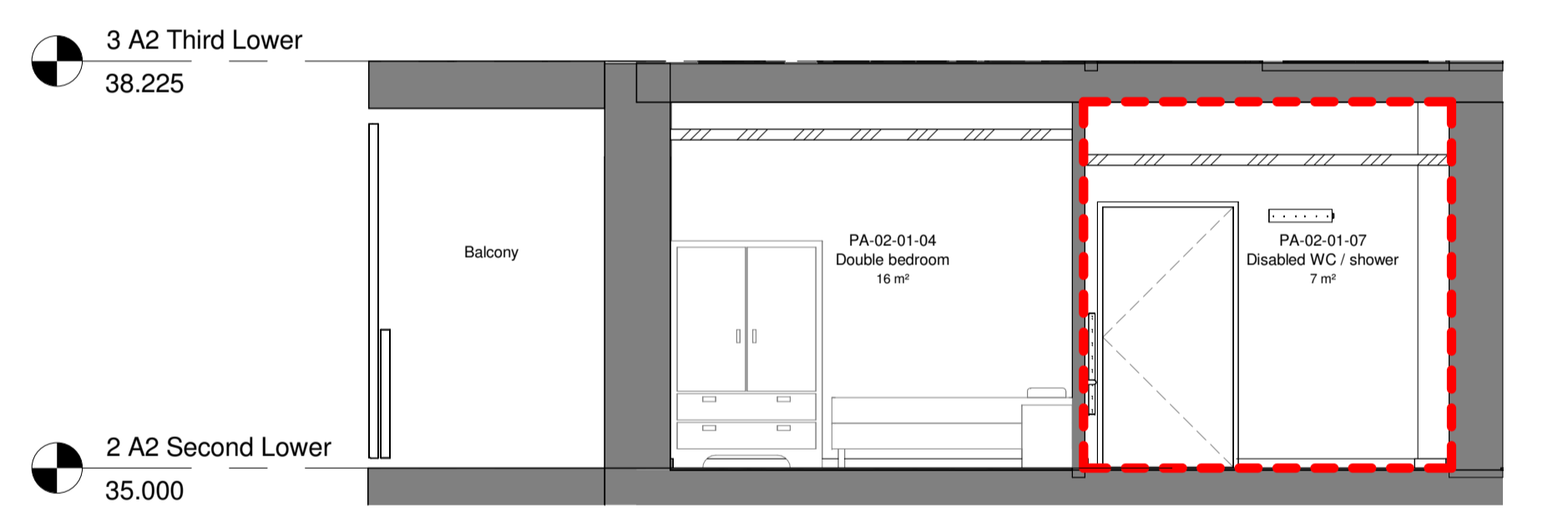
AG Flat Areas - R1				
Department	Occupancy	Number	Area	Name
PA-02-01				
R1	3B6P	PA-02-01-01	26 m ²	Hallway
R1	3B6P	PA-02-01-02	16 m ²	Twin bedroom
R1	3B6P	PA-02-01-03	22 m ²	Double bedroom
R1	3B6P	PA-02-01-04	16 m ²	Double bedroom
R1	3B6P	PA-02-01-05	26 m ²	Living
R1	3B6P	PA-02-01-06	24 m ²	Kitchen / dining
R1	3B6P	PA-02-01-07	7 m ²	Disabled WC / shower
R1	3B6P	PA-02-01-08	7 m ²	Bathroom
R1	3B6P	PA-02-01-10	2 m ²	Utility store
R1	3B6P	PA-02-01-11	2 m ²	Store
10			148 m ²	



1 Flat type R1 Plan
1 : 50



2 IE-R1-E1
1 : 50



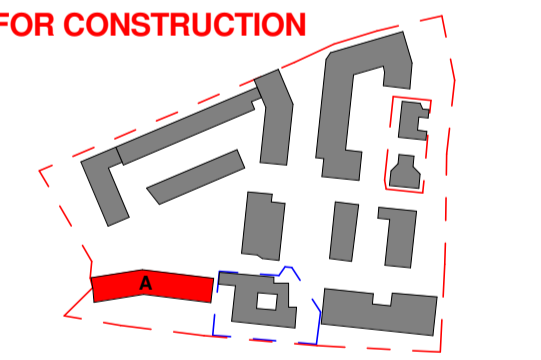
3 IE-R1-W1
1 : 50

Notes:
 - All H/B areas here are taken from their DWGs issued with EIR - App. 6.
 - The flat type GIA calculations include all internal walls and columns and area occupied by the reveals of windows when measured and assessed as the internal dominant face. This description above has been taken from the following document available online "RICS_property_measurement_1st_edition_PGguidance_2015". Note this document supersedes the previous rules of measurement from RICS and references GIA floor area calculations in comparison with IPMS 2 method of GIA measurement Code of Measuring Practice

Rev	Date	Description	Drawn	Checked
5	31.01.18	LAST ISSUE FOR CONSTRUCTION	IC	RW
4	06.12.16	Updates as response to Occupational Therapist comments	IC	RW
3	05.05.16	Issued for Construction	AP	IC
2	19.10.15	Issued for Building Control	CD	EB
1	11.08.15	Preliminary Issue	CD	EB

Revision Schedule

LAST ISSUE FOR CONSTRUCTION



LONDON: 020 7403 2888 WWW.ARCHTYPE.CO.UK HEREFORD: 01961 542 111

Client: Hill Partnership Ltd for Camden Council

Project: Agar Grove Block A

Drawing Title: Flat type R1

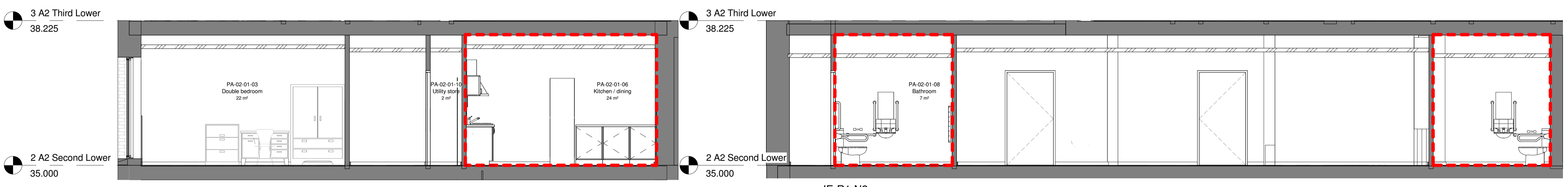
Project: T14011 - ART - DR - A - 1a A 00 - GA-731

Status: A Issued for Construction

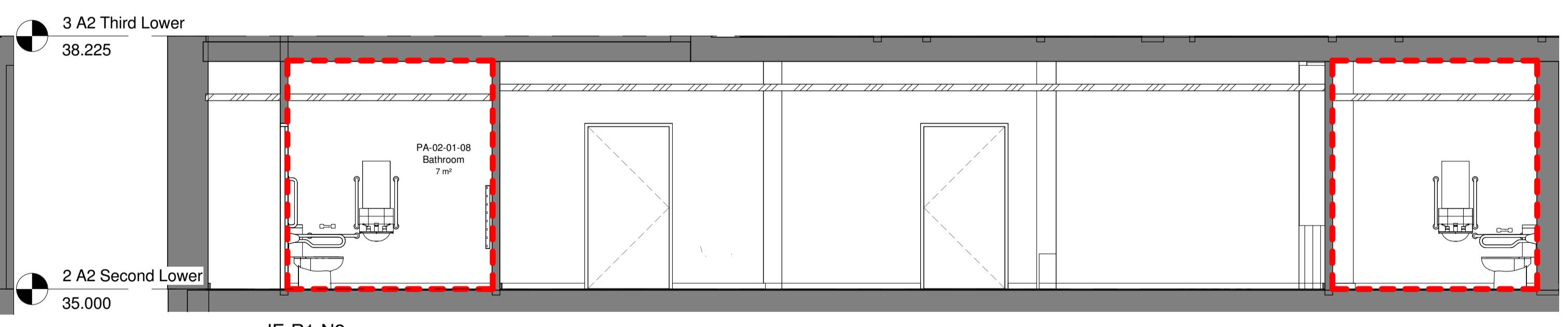
Revision: Z5 Revision description as above

Scale: As indicated @ A1 Date: 02 Feb 15

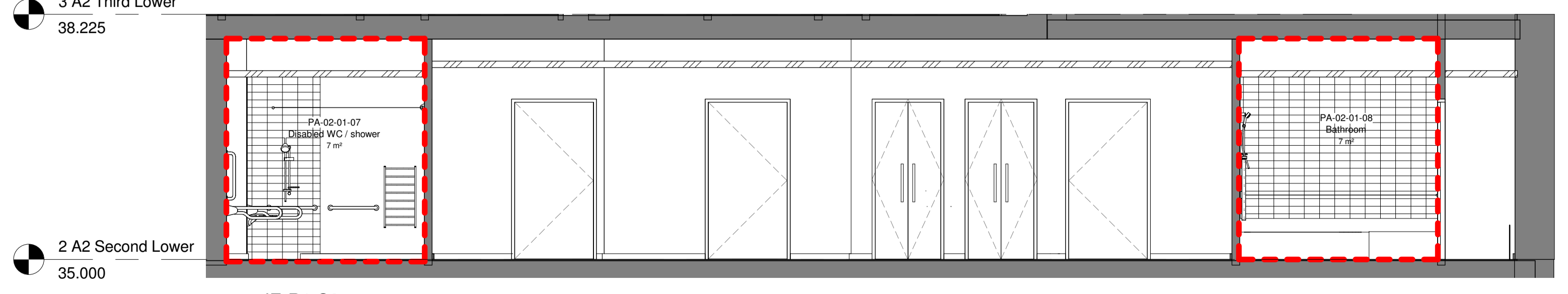
Drawn by: IC Checked by: CD
 Internal Project Ref: 8090 Model Ref: AG-RAC2015-A-A



4 IE-R1-E2
1 : 50



5 IE-R1-N2
1 : 50



6 IE-R1-S2
1 : 50

Refer to DD-600 series for accurate setting out of bathrooms
 Refer to DD-650 series for accurate setting out of kitchens
 Elevations indicative here only