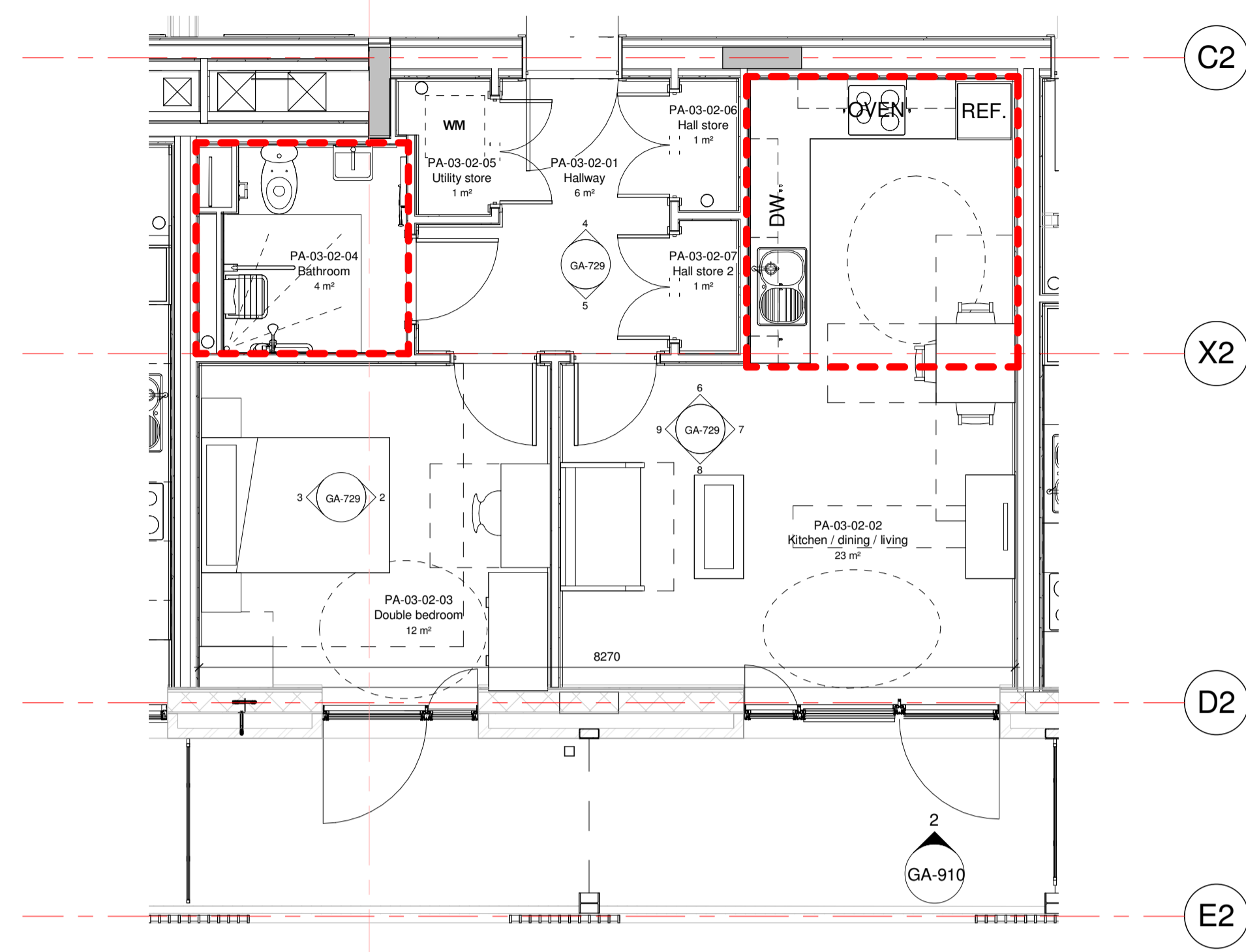


Notes
 This drawing is © Archtype Ltd.
 Check this drawing is the latest revision.
 Do not scale from this drawing.
 Do not use the information on this drawing without checking all dimensions on site.
 Do not use any areas indicated for either valuation, purchase, sale or any other form of legally binding contract.
 Do not reproduce any part of this drawing without prior written consent.
 Report any discrepancies on this document to Archtype.
 Read this drawing in conjunction with the associated models, specifications and related consultant's documents.
 Equivalent products / materials may be Approved where the Employer's Requirements, Thermal Performance, Airtightness and any other specified performance requirements are met. Subject to Archtype "Acceptance".
 All materials to be certified to comply with BS 14001 or BES6001 or be able to provide a Chain of Custody certificate in order to comply Code for Sustainable Homes. All timber species and sources used in this development are not to be listed on the CITES appendices for endangered or threatened species (appendix I, II or III).

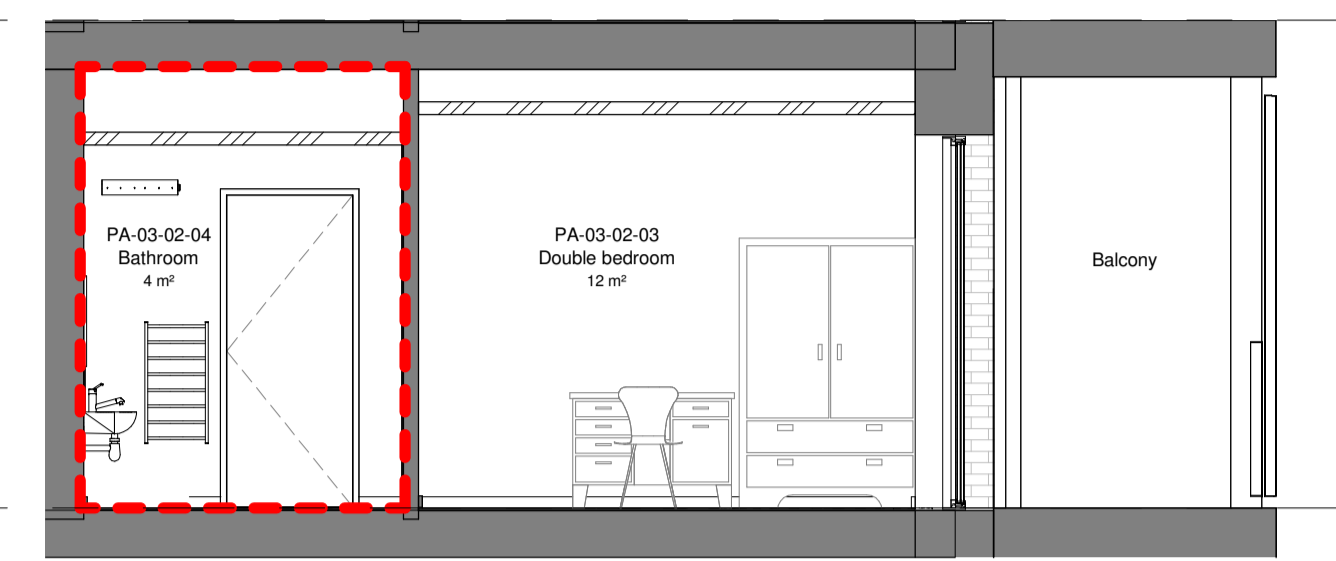
AG Flat Areas - G4

Department	Occupancy	Number	Area	Name
PA-03-02				
G4a	1B2P	PA-03-02-01	6 m ²	Hallway
G4a	1B2P	PA-03-02-02	23 m ²	Kitchen / dining / living
G4a	1B2P	PA-03-02-03	12 m ²	Double bedroom
G4a	1B2P	PA-03-02-04	4 m ²	Bathroom
G4a	1B2P	PA-03-02-05	1 m ²	Utility store
G4a	1B2P	PA-03-02-06	1 m ²	Hall store
G4a	1B2P	PA-03-02-07	1 m ²	Hall store 2
7			47 m ²	
PA-04-02				
G4b	1B2P	PA-04-02-01	6 m ²	Hallway
G4b	1B2P	PA-04-02-02	23 m ²	Kitchen / dining / living
G4b	1B2P	PA-04-02-03	12 m ²	Double bedroom
G4b	1B2P	PA-04-02-04	4 m ²	Bathroom
G4b	1B2P	PA-04-02-05	1 m ²	Utility store
G4b	1B2P	PA-04-02-06	1 m ²	Hall store
G4b	1B2P	PA-04-02-07	1 m ²	Hall store 2
7			48 m ²	
PA-05-02				
G4c	1B2P	PA-05-02-01	6 m ²	Hallway
G4c	1B2P	PA-05-02-02	23 m ²	Kitchen / dining / living
G4c	1B2P	PA-05-02-03	12 m ²	Double bedroom
G4c	1B2P	PA-05-02-04	4 m ²	Bathroom
G4c	1B2P	PA-05-02-05	1 m ²	Utility store
G4c	1B2P	PA-05-02-06	1 m ²	Hall store
G4c	1B2P	PA-05-02-07	1 m ²	Hall store 2
7			48 m ²	



1 Flat type G4a Plan
1 : 50

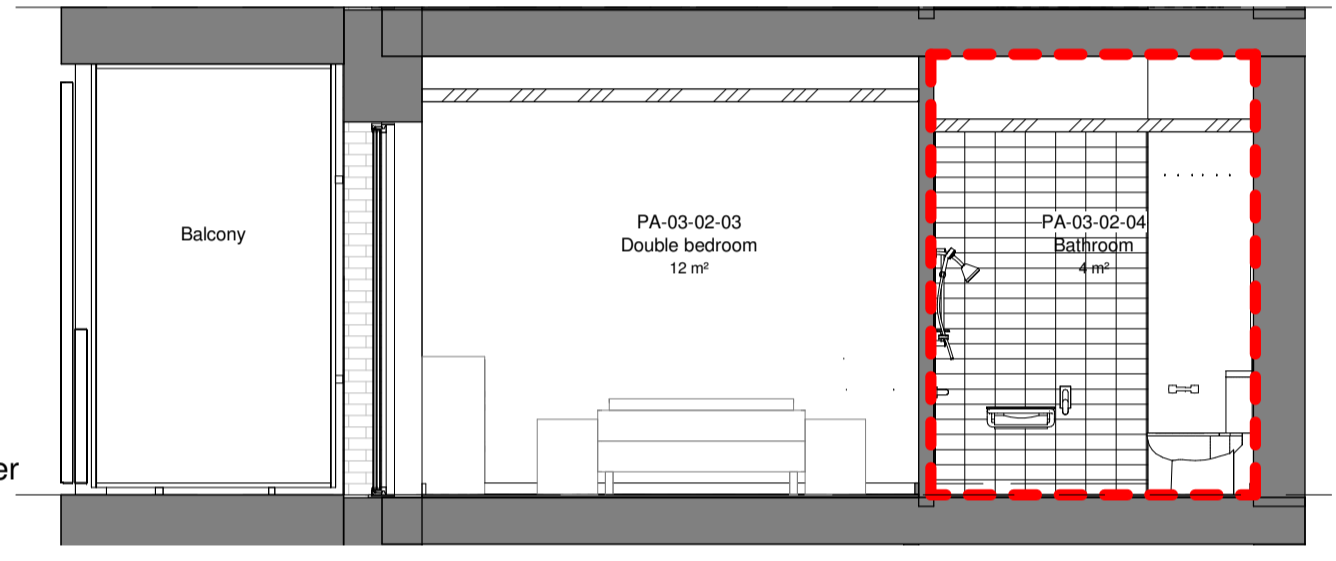
4 A2 Fourth Lower
41.450



2 IE-G4a-E2
1 : 50

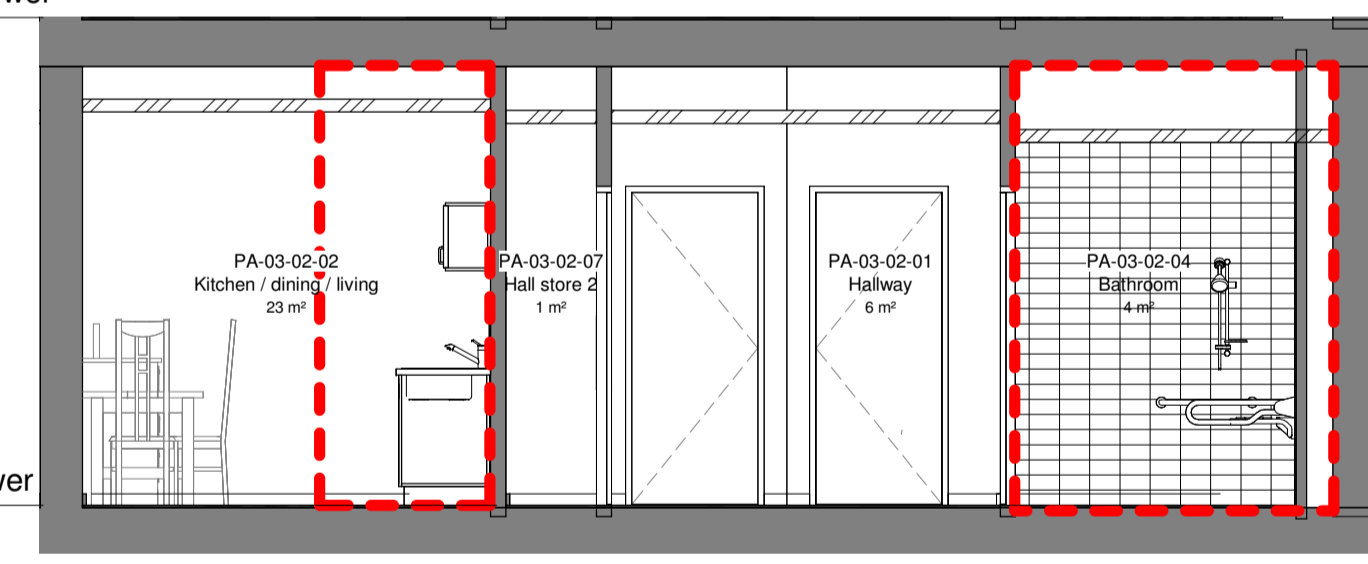
3 A2 Third Lower
38.225

4 A2 Fourth Lower
41.450



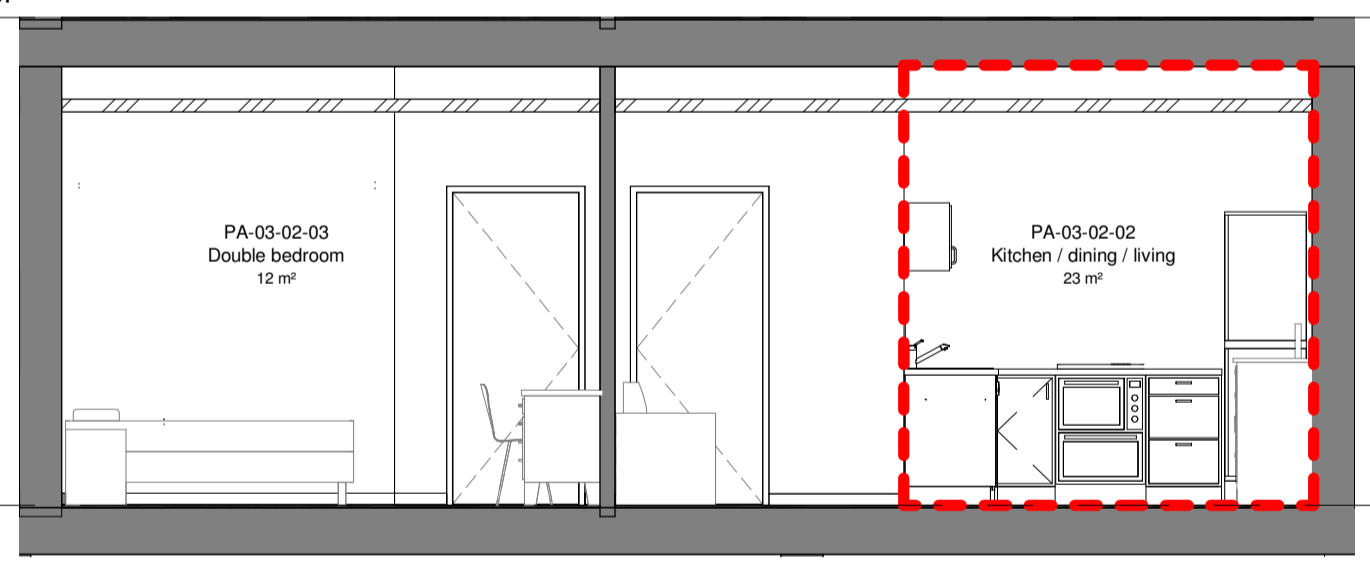
3 IE-G4a-W2
1 : 50

4 A2 Fourth Lower
41.450



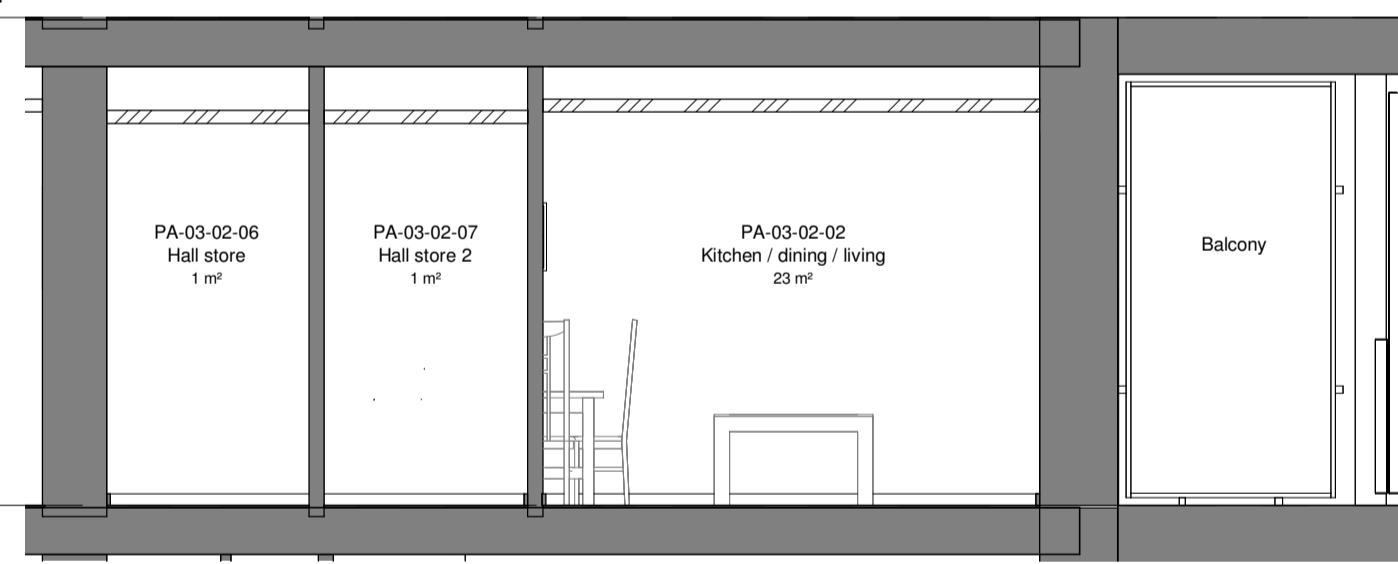
5 IE-G4a-S3
1 : 50

4 A2 Fourth Lower
41.450



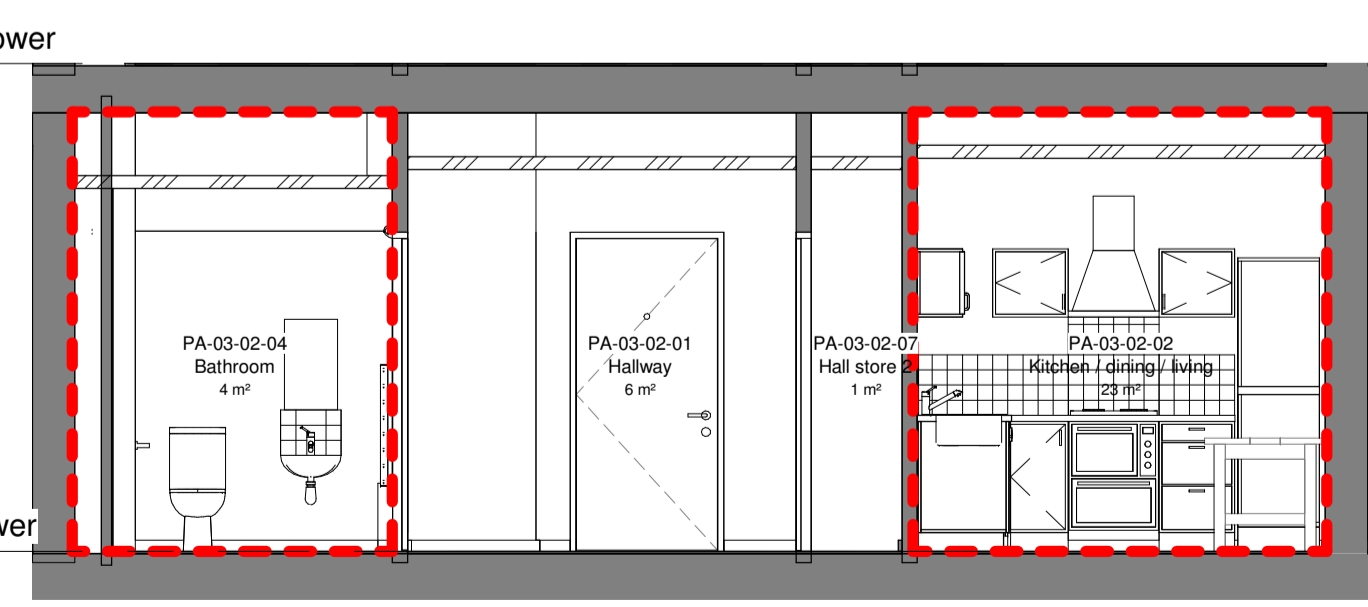
6 IE-G4a-N1
1 : 50

4 A2 Fourth Lower
41.450



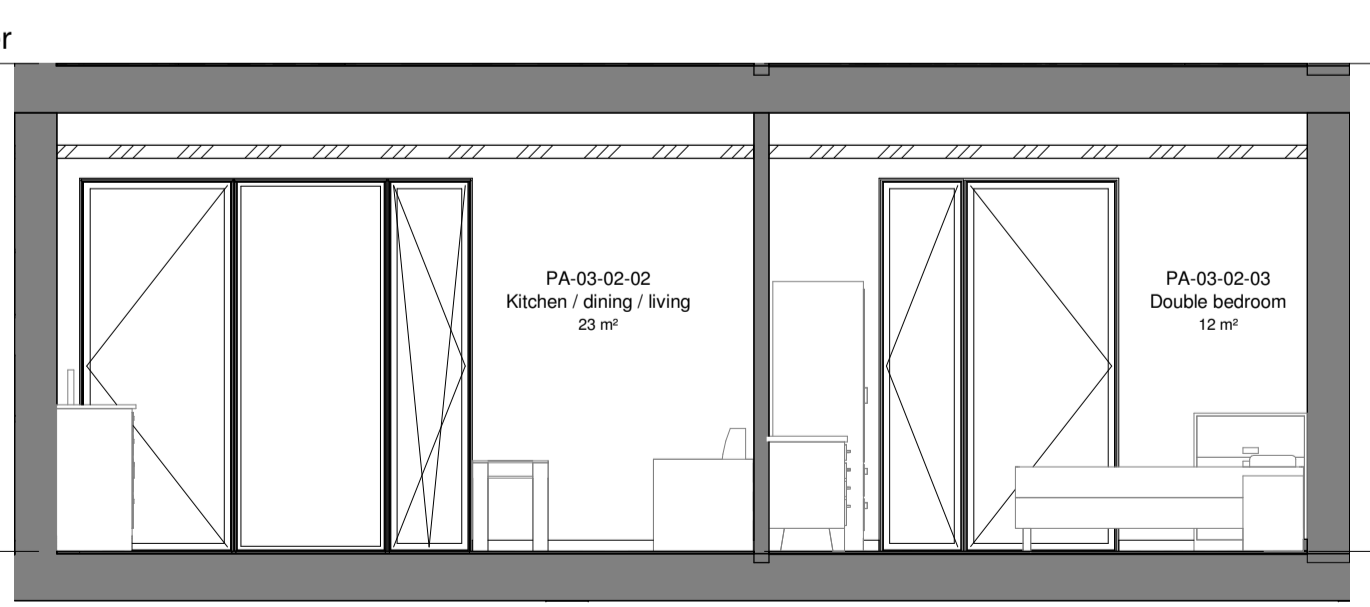
7 IE-G4a-E1
1 : 50

3 A2 Third Lower
38.225



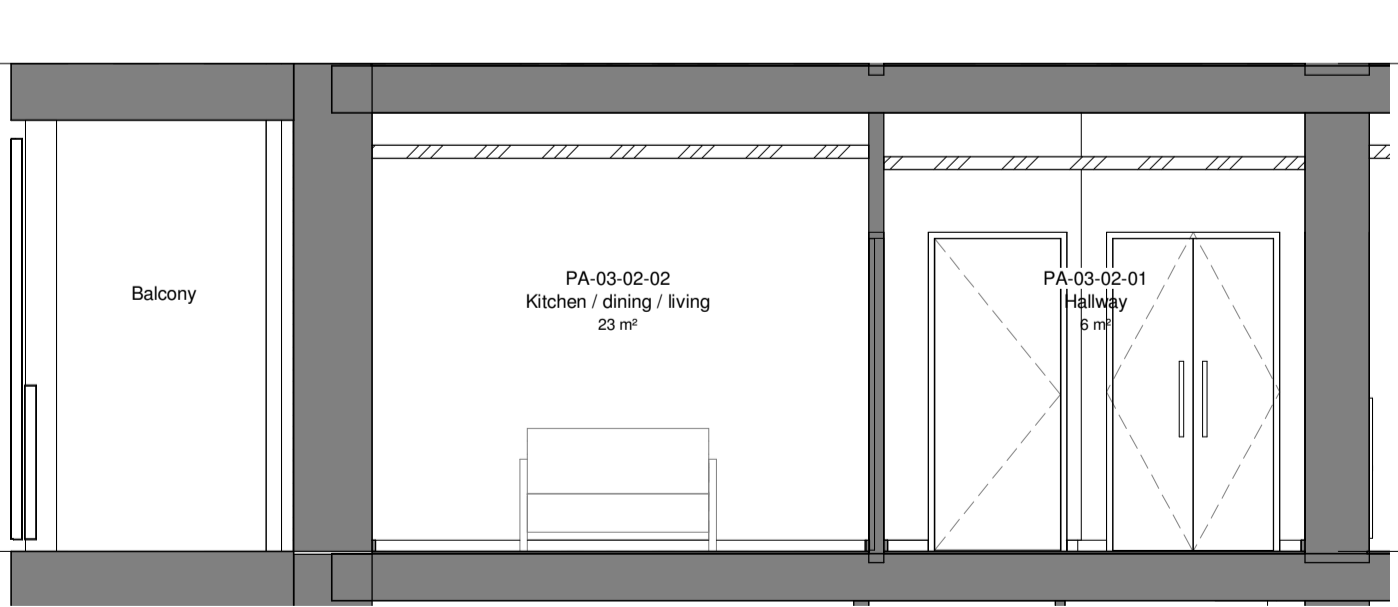
4 IE-G4a-N3
1 : 50

3 A2 Third Lower
38.225



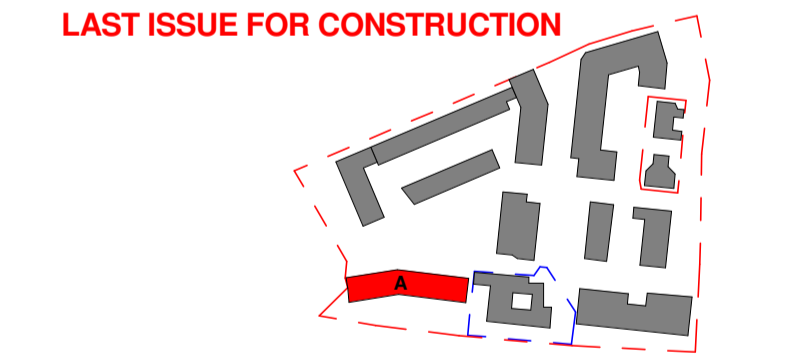
8 IE-G4a-S1
1 : 50

3 A2 Third Lower
38.225



9 IE-G4a-W1
1 : 50

Rev	Date	Description	Drawn	Checked
5	31.01.18	LAST ISSUE FOR CONSTRUCTION	IC	RW
4	20.04.17	Bathroom altered to wet room	AP	IC
3	05.05.16	Issued for Construction	CD	EB
2	19.10.15	Issued for Building Control	CD	EB
1	11.08.15	Preliminary Issue	CD	EB



Client: Hill Partnership Ltd for Camden Council
 Project: Agar Grove Block A
 Drawing Title: Flat Type G4a (Accessible)
 Project: T14011 - ART - DR - A - 1a A 00 - GA-729
 Status: A Issued for Construction
 Revision: Z5 Revision description as above
 Scale: As indicated @ A1 Date: 02 Feb 15
 Drawn by: IC Checked by: CD
 Internal Project Ref: 8090 Model Ref: AG-RAC2015-A-A

Refer to DD-600 series for accurate setting out of bathrooms
 Refer to DD-650 series for accurate setting out of kitchens
 Elevations indicative here only