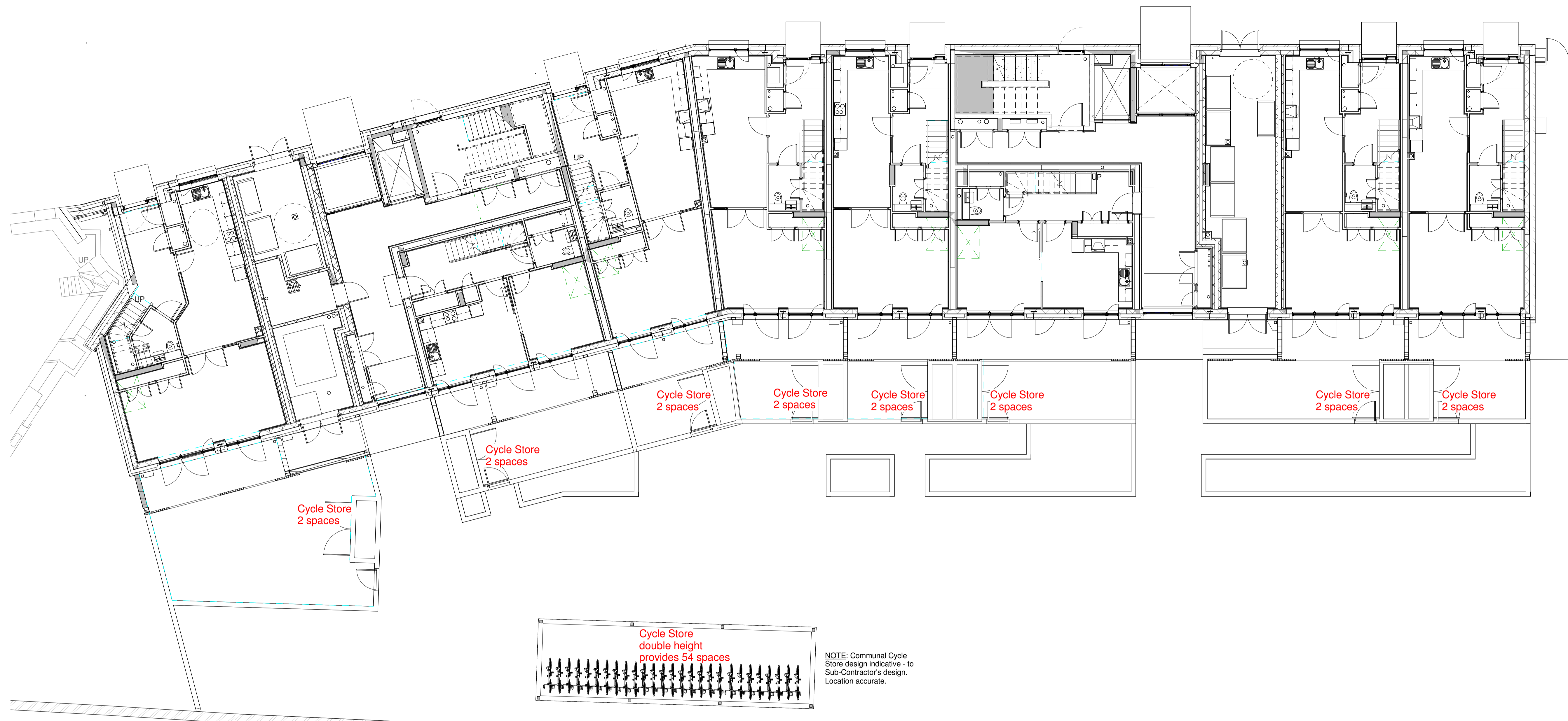


Notes

This drawing is © Archtype Ltd. Check this drawing is the latest revision. Do not scale from this drawing. Do not use the information on this drawing without checking all dimensions on site. Do not use any areas indicated for either valuation, purchase, sale or any other form of legally binding contract. Do not reproduce any part of this drawing without prior written consent. Report any discrepancies on this document to Archtype. Read this drawing in conjunction with the associated models, specifications and related consultant's documents. Equivalent products / materials may be Approved where the Employer's Requirements, Thermal Performance, Airtightness and any other specified performance requirements are met. Subject to Archtype "Acceptance". All materials to be certified to comply with BS 14001 or BES6001 or be able to provide a Chain of Custody certificate in order to comply Code for Sustainable Homes. All timber species and sources used in this development are not to be listed on the CITES appendices for endangered or threatened species (appendix I, II or III).



1 Cycle Storage Strategy  
1 : 100

Site Wide Cycle Parking Strategy

It is proposed that cycle parking be provided in accordance with London Plan Standards, Early Minor Alterations from 2013. Therefore one space will be provided for each of the 412 units which are one to two bedroomed in size, two spaces will be provided for each of the 81 units which are three bedrooms or greater in size and a total of 13 spaces will be provided for visitors to the development.

In addition to this, 10 spaces will be provided for the commercial and community uses. The cycle parking for the visitors, commercial and community uses will be provided in publicly accessible and visible locations.

The cycle parking is presented in the Cycle parking Strategy diagram.

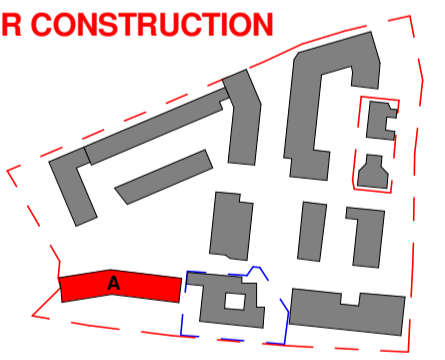


Cycle Parking Provision

Rev	Date	Description	Drawn	Checked
2	31.01.18	LAST ISSUE FOR CONSTRUCTION	IC	RW
1	19.10.15	Issued for Building Control	CD	EB

Revision Schedule

LAST ISSUE FOR CONSTRUCTION



LONDON: 020 7403 2888 WWW.ARCHTYPE.CO.UK HEREFORD: 01981 542 111

Client: Hill Partnership Ltd for Camden Council

Project: Agar Grove Block A

Drawing Title: Cycle Storage Strategy

Project Originator Type Role Phase Block Unit Unique ID

T14011 - ART - DR - A - 1a A 00 - GA-066

Status: Code Suitability Description

D6 Issued for Building Control

Revision: Code Revision Description

Z2 Revision description as above

Scale: 1 : 100 @ A1 Date: 12 Feb 15

Drawn by: CD Checked by: EB

Internal Project Ref: 8090 Model Ref: AG-RAC2015-A-A