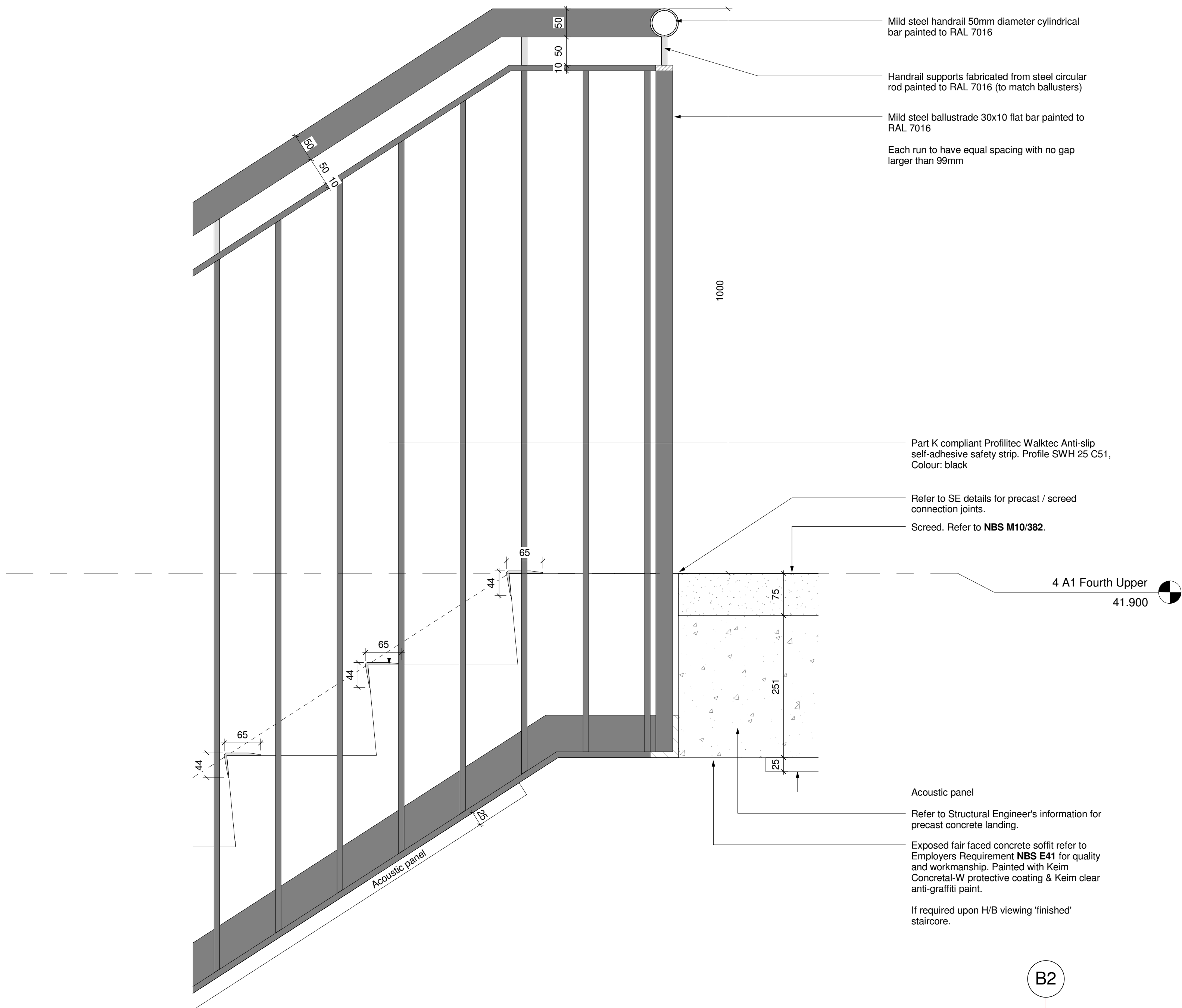


Exposed concrete finish to staircores internally. Refer to NBS L30 270A.

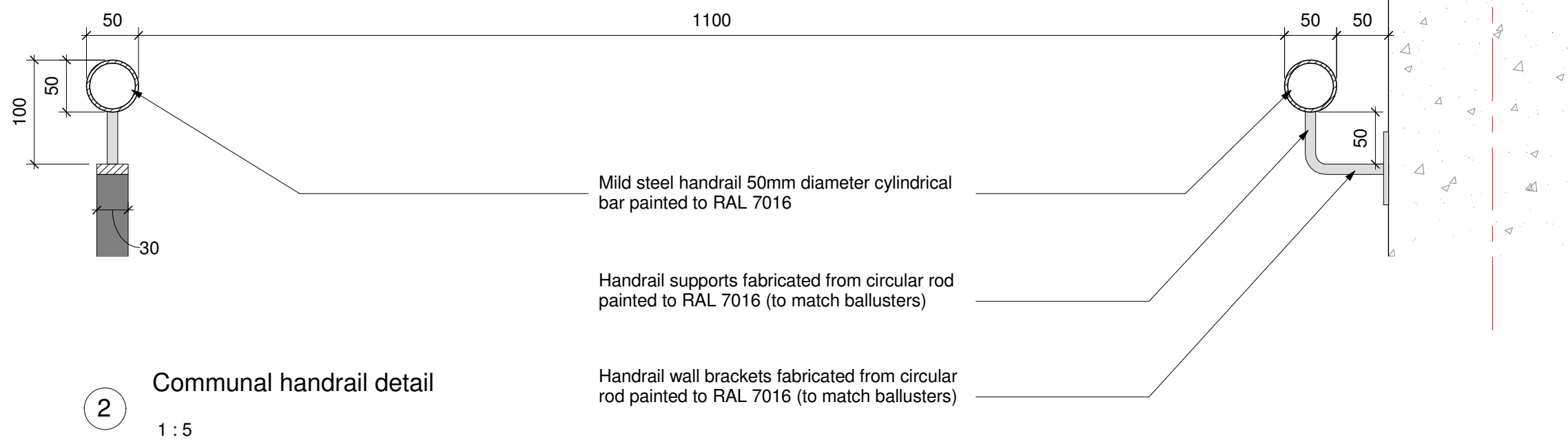
Balustrade and handrails to the staircase to be Mild Steel RAL7016 'Anthracite Grey' painted metal frame. Refer to NBS L30 270A.

Wall-fixed circular handrails with fixing brackets to match balustrade.

Stair - for illustration purposes only



1 Typical Core Stair Detail Section 2
1:5



2 Communal handrail detail
1:5

Notes

This drawing is © Archtype Ltd.
Check this drawing is the latest revision.
Do not scale from this drawing.
Do not use the information on this drawing without checking all dimensions on site.
Do not use any areas indicated for either valuation, purchase, sale or any other form of legally binding contract.
Do not reproduce any part of this drawing without prior written consent.
Report any discrepancies on this document to Archtype.
Read this drawing in conjunction with the associated models, specifications, and related consultant's documents.
Equivalent products / materials may be Approved where the Employer's Requirements, Thermal Performance, Airtightness and any other specified performance requirements are met. Subject to Archtype 'Acceptance'.
All materials to be certified to comply with BS 14001 or BES6001 or be able to provide a Chain of Custody certificate in order to comply Code for Sustainable Homes. All timber species and sources used in this development are not to be listed on the CITES appendices for endangered or threatened species (appendix I, II or III).

DWG NOTE:

The information has been issued in .dwg format but these should always be read in conjunction with the .pdf format set. This is due to the potential loss of information or clarity that can occur in the creation of .dwgs from .vwx and .rvt. If in doubt the .pdfs take precedence over the .dwgs.

These should not be considered a replacement for the need for contractors/consultants to produce their own base drawings from initial survey information.

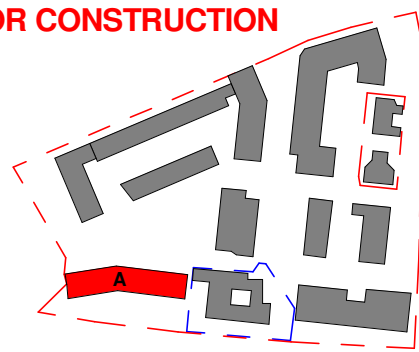
Archtype are not responsible for any discrepancies, conflicts, errors or omissions or consequences resulting thereof. Archtype also accepts no responsibility for alterations or amendments you make to this information.

If any discrepancies, conflicts, errors or omissions are discovered, they should be reported to us immediately. All dimensions and levels should be confirmed from survey information, on-site, or from levels shown by Archtype on the .pdf set, as appropriate. Do not take dimensions from the .dwgs. Do not use any areas indicated for either valuation, purchase sale or any other form of legally binding contract.

The drawings should always be read in conjunction with all relevant drawings, specifications, schedules and other contract information issued by the architect, structural engineer, services engineer and any other consultant employed or retained by the employer in respect of these works.

9	19.01.18	LAST ISSUE FOR CONSTRUCTION	IC	RW
8	03.10.17	Revision of handrail supports	IC	RW
7	27.08.17	Clarification of handrail and support design	RW	LF
6	25.08.17	Stair nosing update	IC	AMF
5	26.04.16	Minor revisions to staircases	MH	RW
4	11.04.16	Minor Revisions to Staircases	MH	EB
3	07.04.16	Revisions to Staircases	MH	EB
2	20.01.16	Issued for Information	IC	EB
1	19.10.15	Issued for Building Control	CD	EB
Rev	Date	Description	Drawn	Checked

LAST ISSUE FOR CONSTRUCTION



LONDON: 020 7403 2889 WWW.ARCHITYPE.CO.UK HEREFORD: 01981 542 111

Client: Hill Partnership Ltd for Camden Council

Project: Agar Grove Block A

Drawing Title: Circulation Core Stair Detail

Project Originator Type Role Phase Block Unit Unique ID
T14011 - ART - DR - A - 1a A 00 - DD-325

Status: Code Suitability Description
A Issued for Construction

Revision: Code Revision Description
Z9 Revision description as above

Scale: As indicated @ A1 Date: 29 Jul 15

Drawn by: CD Checked by: EB

Internal Project Ref: 8090 Model Ref: AG-RAC2015-A-A