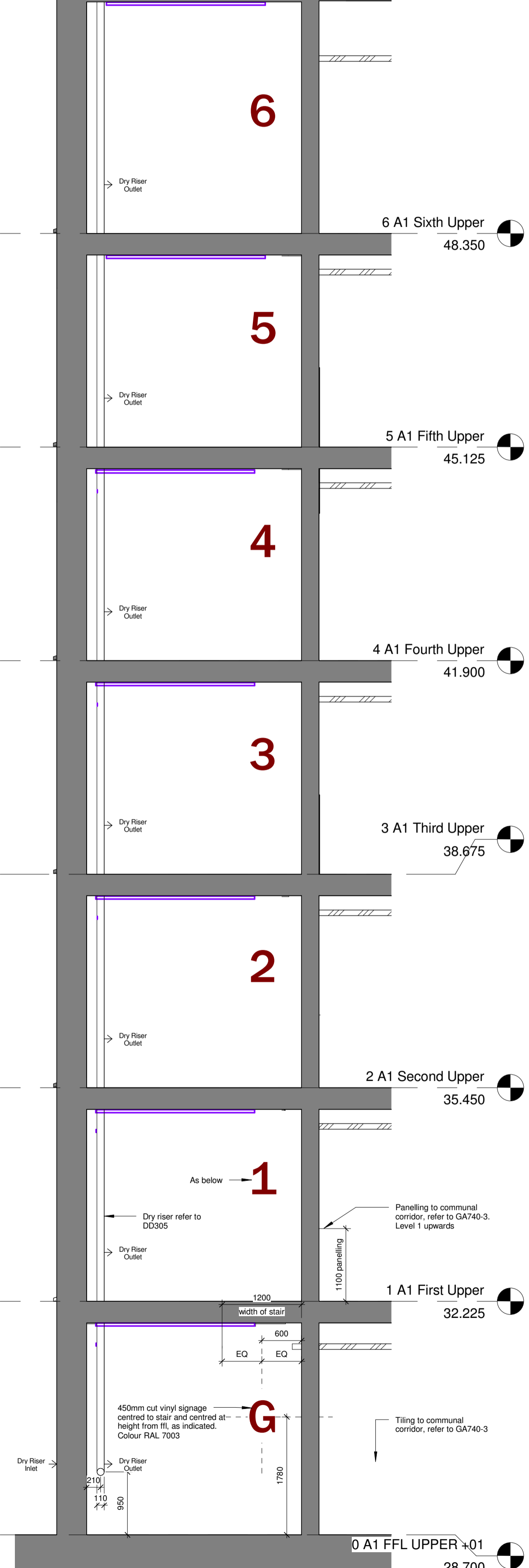
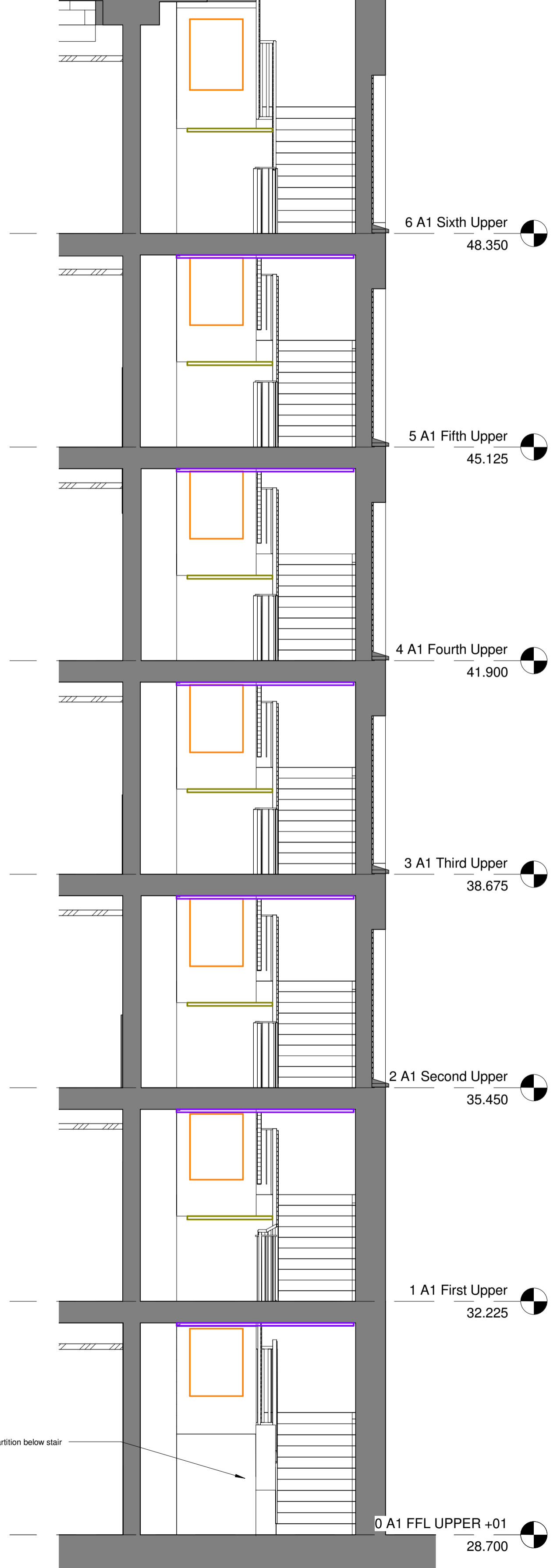
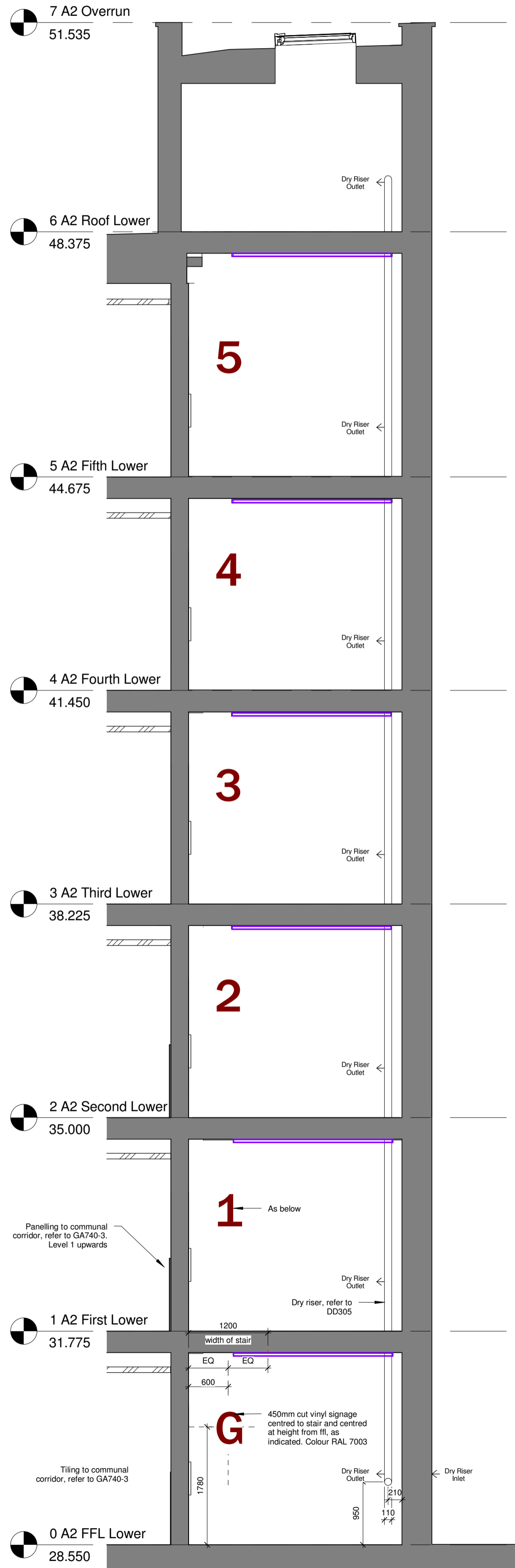


NOTES:
 1. Coloured acoustic panels Wallsorba acoustic wall panels by Soundsorba as NBS xx/xxx. Refer to DD-700 for colour codes.
 2. Signage to be robust self adhesive coloured vinyl signage (or stencil painted). Font Helvetica to fit centrally in space adjacent to acoustic panels.

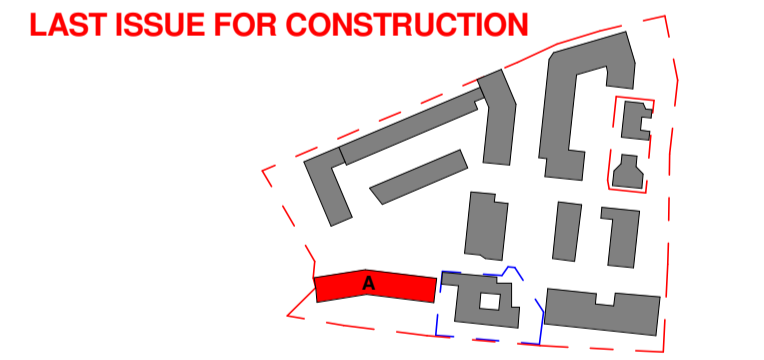
KEY
 Acoustic Panel Sizes - Refer to GA360 for typical setout and spacing of acoustic panels
 1000x1800mm acoustic panel (to suit head requirements) fixed to underside of stair
 1000x2400mm acoustic panel fixed to underside of half landing
 1200x2400mm acoustic panel fixed to underside of full landing
 800x900mm acoustic panel (to suit head height requirements) fixed to underside of stair
 3no.1200x2700mm acoustic panels fixed to ceiling



Notes
 This drawing is © Archtype Ltd.
 Check this drawing is the latest revision.
 Do not scale from this drawing.
 Do not use the information on this drawing without checking all dimensions on site.
 Do not use any areas indicated for either valuation, purchase, sale or any other form of legally binding contract.
 Do not reproduce any part of this drawing without prior written consent.
 Report any discrepancies on this document to Archtype.
 Read this drawing in conjunction with the associated models, specifications and related consultant's documents.
 Equivalent products / materials may be Approved where the Employer's Requirements, Thermal Performance, Airtightness and any other specified performance requirements are met. Subject to Archtype "Acceptance".
 All materials to be certified to comply with BS 14001 or BES6001 or be able to provide a Chain of Custody certificate in order to comply Code for Sustainable Homes. All timber species and sources used in this development are not to be listed on the CITES appendices for endangered or threatened species (appendix I, II or III).

DWG NOTE:
 The information has been issued in .dwg format but these should always be read in conjunction with the .pdf format set. This is due to the potential loss of information or clarity that can occur in the creation of .dwgs from .vwx and .rvt. If in doubt the .pdfs take precedence over the .dwgs.
 These should not be considered a replacement for the need for contractors/consultants to produce their own base drawings from initial survey information.
 Archtype are not responsible for any discrepancies, conflicts, errors or omissions or consequences resulting thereof. Archtype also accepts no responsibility for alterations or amendments you make to this information.
 If any discrepancies, conflicts, errors or omissions are discovered, they should be reported to us immediately. All dimensions and levels should be confirmed from survey information, on-site, or from levels shown by Archtype on the .pdf set, as appropriate. Do not take dimensions from the .dwgs. Do not use any areas indicated for either valuation, purchase sale or any other form of legally binding contract.
 The drawings should always be read in conjunction with all relevant drawings, specifications, schedules and other contract information issued by the architect, structural engineer, services engineer and any other consultant employed or retained by the employer in respect of these works.

Rev	Date	Description	Drawn	Checked
8	31.01.18	LAST ISSUE FOR CONSTRUCTION	IC	RW
7	28.03.17	Minor updates	NA	RW
6	23.07.16	Changes to show decal locations, acoustic panel size and dry riser	LM	IC
5	26.04.16	Minor revisions to staircases	MH	RW
4	11.04.16	Minor Revisions to Staircases	MH	EB
3	07.04.16	Revisions to Staircases	MH	EB
2	20.01.16	Issued for Information	IC	EB
1	19.10.15	Issued for Building Control	CD	EB



Client: Hill Partnership Ltd for Camden Council
 Project: Agar Grove Block A
 Drawing Title: Circulation Core Short Elevations
 Project Originator Type Role Phase Block Unit Unique ID
 T14011 - ART - DR - A - 1a A 00 - DD-322
 Status: Code Suitability Description
 A Issued for Construction
 Revision: Code Revision Description
 Z8 Revision description as above
 Scale: 1 : 50 @ A1 Date: 18 Jun 15
 Drawn by: CD Checked by: AP
 Internal Project Ref: 8090 Model Ref: AG-RAC2015-A-A