

Notes
 This drawing is © Architype Ltd.
 Check this drawing is the latest revision.
 Do not scale from this drawing.
 Do not use the information on this drawing without checking all dimensions on site.
 Do not use any areas indicated for either valuation, purchase, sale or any other form of legally binding contract.
 Do not reproduce any part of this drawing without prior written consent.
 Report any discrepancies on this drawing to Architype.
 Read this drawing in conjunction with the associated models, specifications and related consultant's documents.
 Equivalent products / materials may be Approved where the Employer's Requirements, Thermal Performance, Airtightness and any other specified performance requirements are met. Subject to Architype "Acceptance".
 All materials to be certified to comply with BS 14001 or BS6001 or be able to provide a Chain of Custody certificate in order to comply Code for Sustainable Homes. All timber species and sources used in this development are not to be listed on the CITES appendices for endangered or threatened species (appendix I, II or III)

DWG NOTE:
 The information has been issued in .dwg format but these should always be read in conjunction with the .pdf format set. This is due to the potential loss of information or clarity that can occur in the creation of .dwgs from .vwx and .rvt. If in doubt the .pdfs take precedence over the .dwgs.

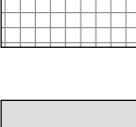
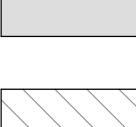
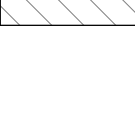
These should not be considered a replacement for the need for contractors/consultants to produce their own base drawings from initial survey information.

Architype are not responsible for any discrepancies, conflicts, errors or omissions or consequences resulting thereof. Architype also accepts no responsibility for alterations or amendments you make to this information.

If any discrepancies, conflicts, errors or omissions are discovered, they should be reported to us immediately. All dimensions and levels should be confirmed from survey information, on-site, or from levels shown by Architype on the .pdf set, as appropriate. Do not take dimensions from the .dwgs. Do not use any areas indicated for either valuation, purchase sale or any other form of legally binding contract. The drawings should always be read in conjunction with all relevant drawings, specifications, schedules and other contract information issued by the architect, structural engineer, services engineer and any other consultant employed or retained by the employer in respect of these works.

To be read in conjunction with Section DD-311

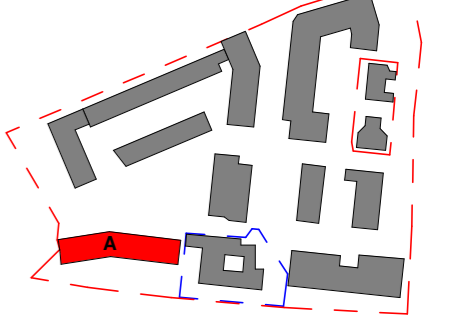
Exposed concrete fair faced wall finishes to core and fair faced concrete soffit, tread, risers and side of staircase. Refer to NBS E41 for quality.

-  Window detail indication. See DD-502 to DD-511 for full information
-  Screed: Refer to DD325
-  Ceiling to void below stairs

Rev	Date	Description	Drawn	Checked
13	31.01.18	LAST ISSUE FOR CONSTRUCTION	IC	RW
12	28.09.17	Addition of turning circle to upper levels - Building Control	IC	RW
11	28.03.17	Minor updates	NA	RW
10	21.02.17	Clarification of dry riser location	IC	RW
9	26.04.16	Minor revisions to staircases	MH	RW
8	11.04.16	Minor Revisions to Staircases	MH	EB
7	07.04.16	Revisions to Staircases	MH	EB
6	30.03.16	First Construction Issue	IC	EB
5	14.03.16	Minor adjustments to handrails and dimensions, inc riser wall	IC	EB
4	10.03.16	Minor adjustments to handrails and dimensions	IC	EB
3	20.01.16	Issued for Information	IC	EB
2	18.10.15	Issued for Building Control	GD	EB
1	02.07.15	Preliminary Issue	AP	GD

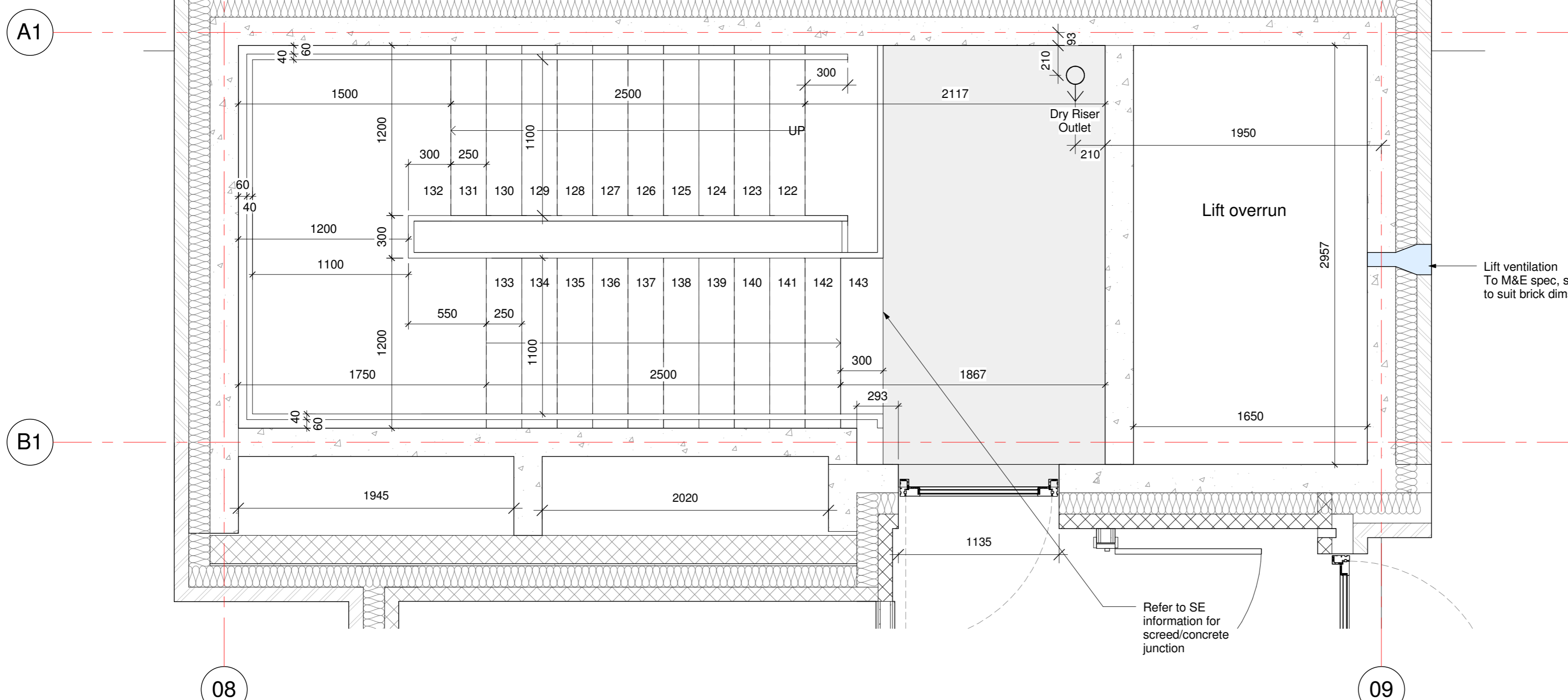
Revision Schedule

LAST ISSUE FOR CONSTRUCTION

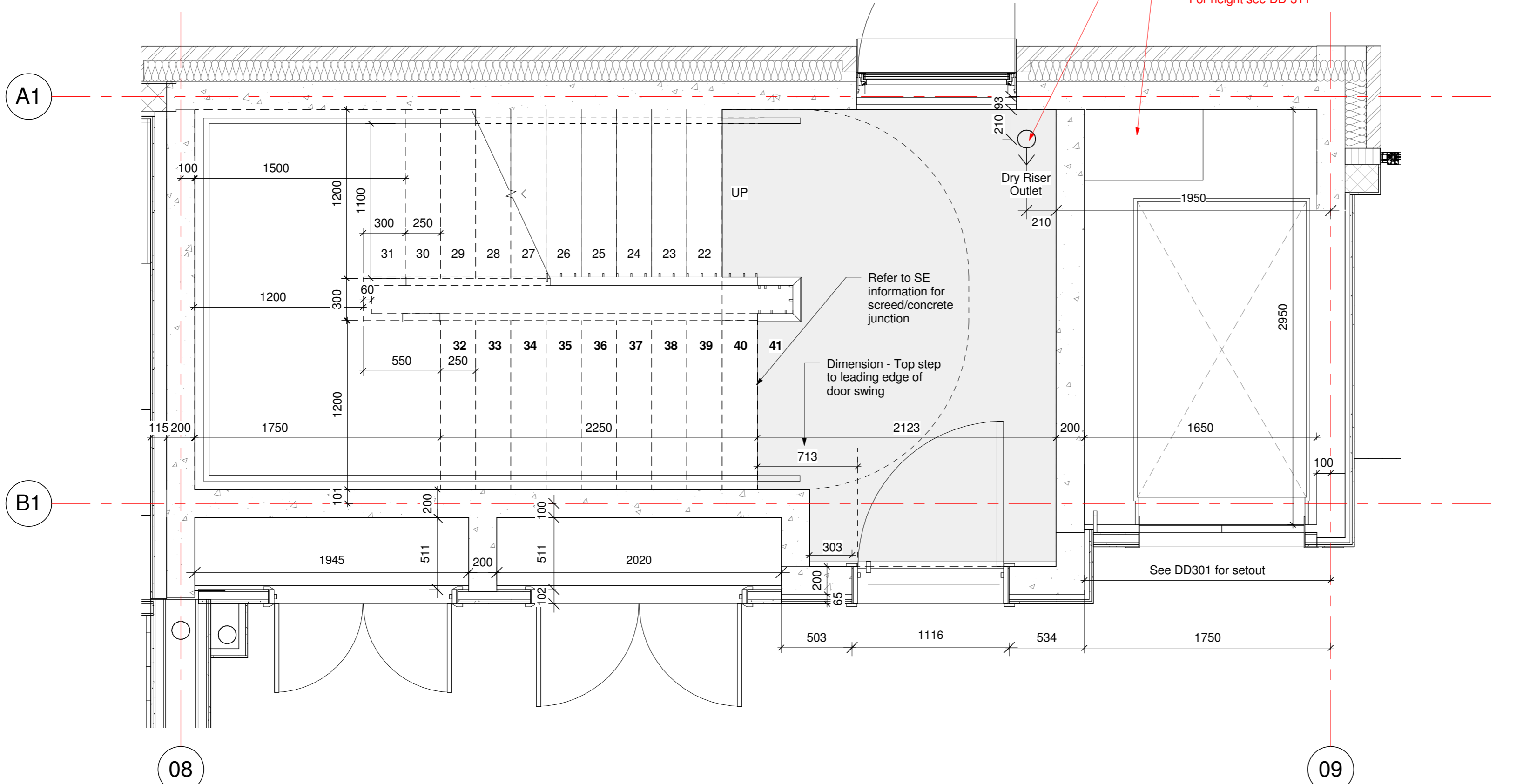


LONDON: 020 7403 2889 WWW.ARCHITYPE.CO.UK HEREFORD: 01981 582 111

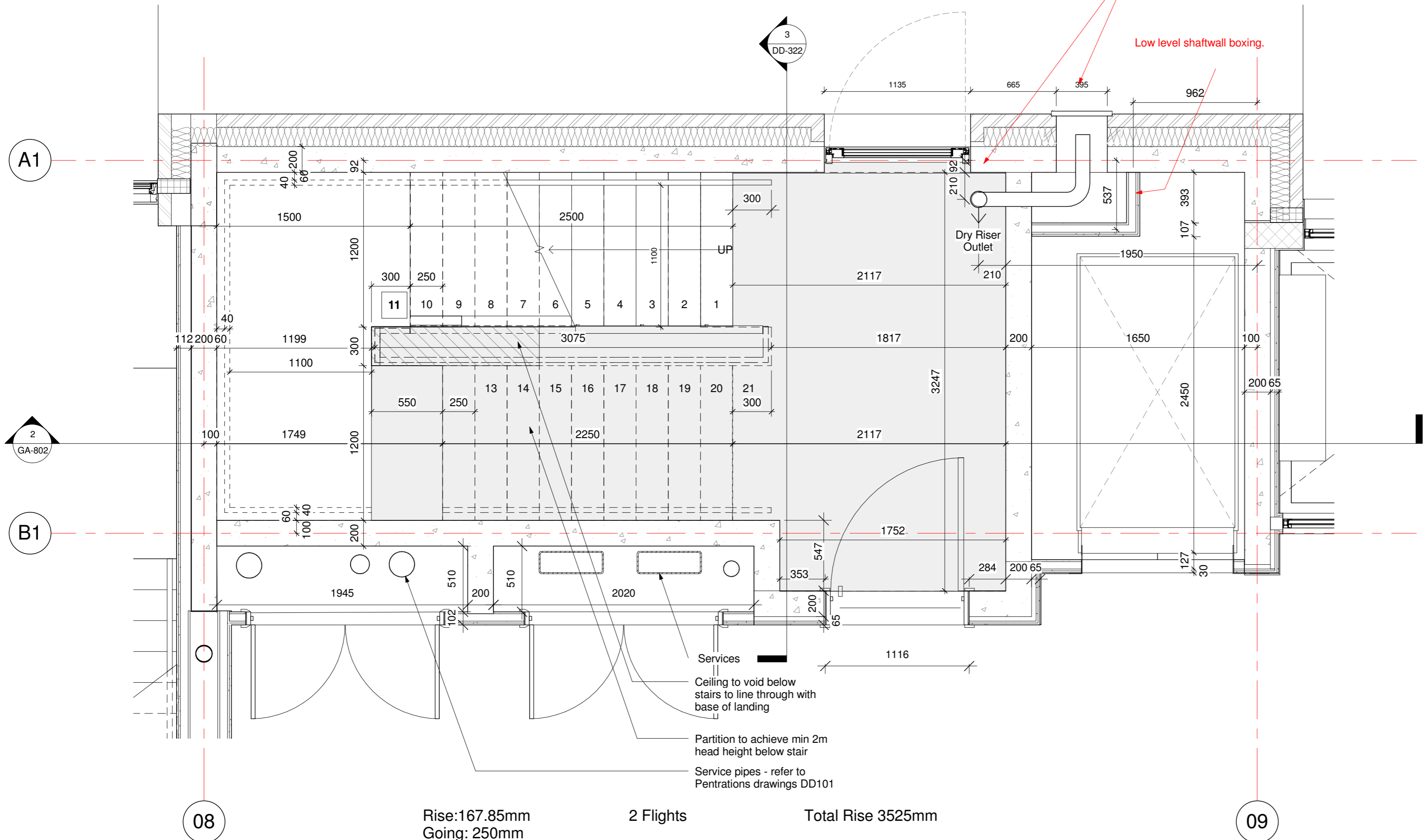
Client: Hill Partnership Ltd for Camden Council
 Project: Agar Grove Block A
 Drawing Title: Circulation Core A1 Plan
 Project Originator Type Role Phase Block Unit Unique ID
 T14011 - ART - DR - A - 1a A 00 - DD-310
 Status: Code Suitability Description
 A Issued for Construction
 Revision: Code Revision Description
 Z13 Revision description as above
 Scale: As indicated @ A1 Date: 02 Jul 15
 Drawn by: AP Checked by: CD
 Internal Project Ref: 8090 Model Ref: AG-RAC2015-A-A



3 Core A1 Sixth Floor to Roof Stair
 1:25
 Rise: 173.90mm
 Going: 250mm
 Pitch: 34.82
 2 Rise + Going = 601mm
 2 Flights
 Flight 1: 11no risers
 Flight 2: 11no risers
 Total Rise 3860mm
 Flight 1: 1912.5mm total rise
 Flight 2: 1912.5mm total rise



2 Core A1 Typical Stair
 1:25
 Rise: 161.25mm
 Going: 250mm
 Pitch: 32.82
 2 Rise + Going = 572.5mm
 2 Flights
 Flight 1: 10no risers
 Flight 2: 10no risers
 Total Rise 3225mm
 Flight 1: 1612.5mm total rise
 Flight 2: 1612.5mm total rise



1 Core A1 Ground to First Floor Stair
 1:25
 Rise: 167.85mm
 Going: 250mm
 Pitch: 33.88
 2 Rise + Going = 585.7mm
 2 Flights
 Flight 1: 11 risers
 Flight 2: 10 risers
 Total Rise 3525mm
 Flight 1: 1846mm total rise
 Flight 2: 1679mm total rise