

- New Stone Coping - Refer to NBS: F21/111
- Selected suitable DPC - Refer to NBS: F30
- Fixing lug to stone specialists detail
- Selected cavity closer to suit 85mm cavity - Refer to NBS: F30
- Stone profiles tbc - Refer to NBS: F21/110
- Stone fixings to stone specialists detail
- Kingspan Kooltherm K112 - Refer to NBS: P10/190A
- 60mm Kingspan Kooltherm K108 Cavity wall insulation. Refer to NBS: F30/155B
- 75mm treated timber framing
- Natural stone cladding to approved support system - Refer to NBS: F21/110
- Batt insulation to web
- Selected DPC - Refer to NBS: F30
- 10mm compressible fill aerofill 1.0 or similar. Refer to Engineer's specs.
- Stone fixings shown indicatively - tbc with S.E. and stone installer
- New custom stone window profiles - Refer to NBS: F21/110
- New fenestration with profile supplied by CAPOFERRI
- Column behind. Galvanised 90x50x5.0 RHS. Refer to Engineer's specs.

**DO NOT SCALE FROM THIS DRAWING**

Figured dimensions only are to be taken from this drawing. All dimensions are to be checked on site before any work is put in hand. If in doubt, ask.

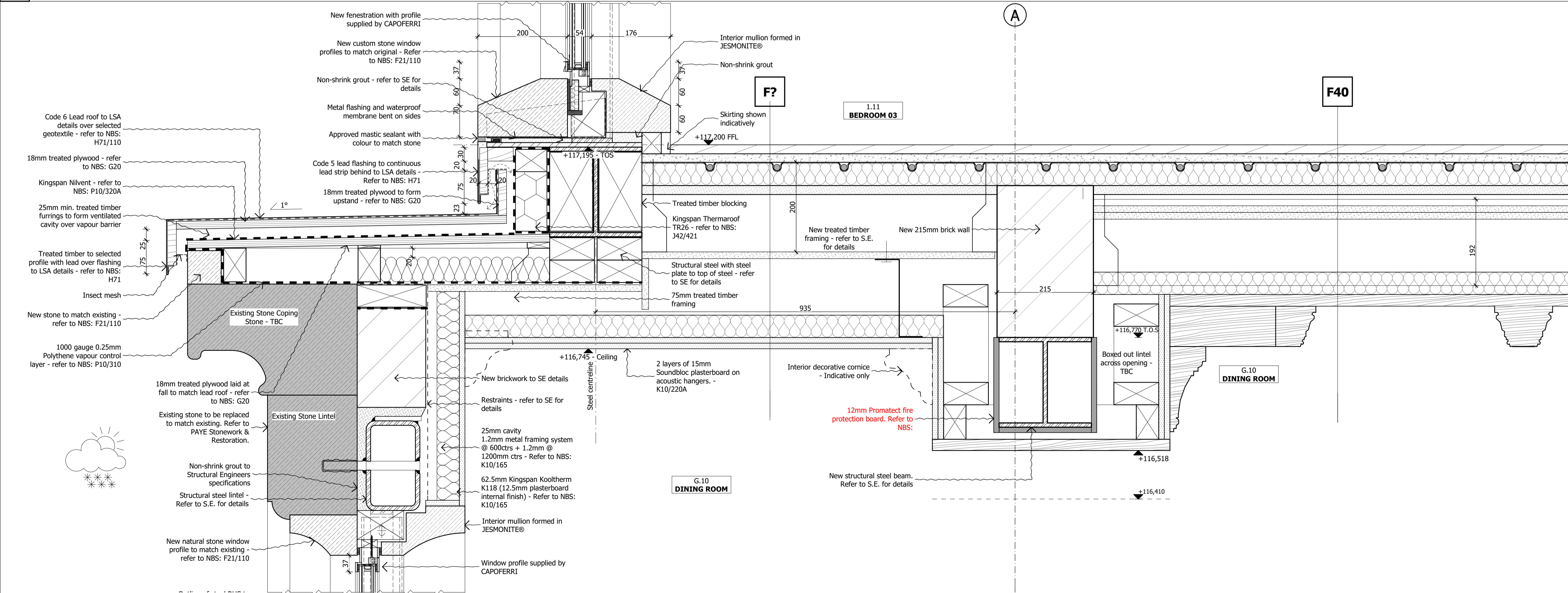
All SHH drawings to be read in conjunction with relevant SHH Finishes, Sanitaryware, Lighting & Ironmongery schedules.

Any discrepancies to be highlighted to SHH prior to procurement and in good time.

Copyright © Spence Harris Hogan Limited 2015  
Registered in England & Wales. Registered No. 261 0615  
SHH is the trading name of Spence Harris Hogan Limited

Legends & Notes:

**1 MEMBRANE ROOF TO NEW BAY WINDOW TO BEDROOM 03 DETAIL**



**2 NEW BAY WINDOW SILL TO EXSITING BAY WINDOW HEAD SECTION DETAIL**

Rev	Date	Descriptor	Athr.
PL02	29.01.18	Planning Condition Approval	DP
PL01	19.01.18	Planning Condition Approval	CK

**shh**  
SHH ARCHITECTS | INTERIOR DESIGNERS  
RIBA MEMBER  
Chartered Practice

1 Vencourt Place, Ravenscourt Park  
HammerSmith, London W6 9NU  
Phone +44 (0) 20 8600 4171 Email info@shh.co.uk  
shh.co.uk

Project:  
**Athlone House**  
Hampstead Lane  
London

Client:  
Private Client

Drawing Title:  
**Existing House Window Bay Details**

(Project number/DWG number\_Revision: 1/1) Checked:  
**(817)AH-421\_PL02** SM