



Planning, Design, and Access Statement

Proposal

Full Planning Permission and Express Advertisement Consent is sort for the removal of 2no. KX100 telephone kiosks and the installation of 1no. InLink.

InLink Site

Hampstead Rd (OS No.29-31 West Euston Partnership Opp No.54)

Lat/Lon: 51.526191, -0.138713

Payphone Removal Site(s)

Hampstead Road (outside no 108 Margarete Centre)

Lat/Lon: 51.528145, -0.13852216

William Rd (Jct Stanhope St)

Lat/Lon: 51.527254, -0.140712

Our Ref

CMD-123

Table of Contents

Table of Contents	2
About us	4
What is an InLink	5
Awards and community feedback	7
InLink roll out programme	8
The Camden roll out	9
InLink design and technical information	11
Accessible for all types of users	13
Connectivity through gigabit Wi-Fi	15
Interactive tablet	17
Free calls for everyone	18
Safer communities	19
Secure fast charging	20
Digital screens that dim at night	21
Environmental performance	22
Materials and maintenance	23
Emergency messaging	25
Smart city sensors, data, and the Internet of Things	26
Content standards	28
Useful real-time information	29
Allocation for community and council content	30
Advertising for businesses of all sizes	31
Site information	32
Pre-application consultation and key stakeholder engagement	33
Planning application	34
UK Digital Strategy	35
National Planning Policy	36

The London Plan 2016	38
Camden local policy	39
Siting justification against planning policy	42
Appendices	45
About BT	46
Proposed Schedule of Operating Conditions – InLinkUK Advertising Screens	47

About us

InLinkUK is a London-based joint venture between technology company Intersection and Primesight, a leading UK out-of-home media company.

We work in partnership with BT in the UK to support them using their connectivity to ensure communities are well-served in the digital age through the roll out of InLinks to replace and rationalise their network of payphones.

Locally 'InLinkUK from BT' have been collaborating with councils throughout the UK on the installation of InLinks and the removal of non-listed BT payphones. Since June 2017 we have had more than 80 InLinks already go live with hundreds more in the coming months expected throughout central areas of London, Leeds, and other major cities around the UK.

In doing so we are creating a service to revolutionise streetscapes and helping deliver the fastest and most robust free public Wi-Fi service in the UK.

At no cost to taxpayers or end users, InLinks provide communities with an unprecedented suite of essential urban tools, including free ultrafast Wi-Fi, phone calls, wayfinding, device charging, an emergency 999 call button, public messaging capabilities, and a platform for interactive technologies on the streets such as air quality monitoring



CMD-123 Hampstead Rd (OS No.29-31 West Euston Partnership Opp No.54)

What is an InLink

InLinks are a community structure helping to connect and improve local streets. At no cost to taxpayers or end users, InLinks provide communities with an unprecedented suite of essential urban tools:

- **Free ultrafast Wi-Fi with speeds up to 1 Gb per second within 100m** of each InLink, with more than 36,000 people having already subscribed, which as of last month saw them use enough data to view over 63 million different webpages
- **Touchscreen tablets** to access council services, BT's phone book, maps and directions, with more than 14,000 tablet sessions every week
- **Accessible** in design including hearing induction loops, braille embossed and TalkBack functionality in the tablet
- All InLinks are powered by **100% renewable energy**
- The InLinkUK team provide **bi-weekly cleaning** and the ability to rapidly respond on an as-needed basis to any issues monitored by sensors in the InLinks
- With a **footprint of just 0.22m²** InLinks are smaller than any comparable street furniture, and their installation also facilitates and **funds the removal of two existing BT payphones**
 - This **allows us to give back pavement space** to local communities which so far is equivalent to install 59 street trees, 197 litter bins or 122 bicycle parks
- **438 hours of council content** on the screens of each InLink per year to promote local initiatives, news, and events
- Hyper-local content allowing each InLink to act as a **community notice board** with the InLinkUK team able to work with local groups to promote nearby events and activities

- Secure power-only USB ports for **rapid device charging**
- **Free phone calls** to UK mobile, local or national numbers, including the option to plug in your personal headphones for more privacy, with ~15,000 free calls already made each week
- **Direct 999 call button** with location sharing two-push approach to limit accidental activation
- The opportunity to integrate **additional environmental sensors** in collaboration with government including on air quality (under trial), and other environmental factors.

A range of factors are considered when choosing the site for each InLink, including Council and community feedback, pedestrian and vehicle flows, visual character of the street scene, proximity to sensitive heritage assets, pavement widths, surrounding land uses and social context in accordance with local policy requirements.

As an amenity for the public, InLinks have a recognisable identity that makes them easy to spot, and yet each fits into its local environment, being visually unimposing and claiming minimal space.

Awards and community feedback

InLinks are an award-winning design that are sensitive to their context both in terms of the built environment and the people who use it.



InLink roll out programme

Our approach to planning has always been collaborative with Councils to look at the roll out of the InLinks to improve the street scene through a process of rationalisation of the existing BT payphone estate.

Our teams work closely with local authorities and other relevant local stakeholders to identify suitable sites for InLinks and to select which payphones are to be removed.

Once the appropriate permissions have been gained for the installation, we progress with removals and installations with the minimal possible disruption to local residents and businesses.

We have designed the activation of the units to be as automated as possible to minimise the time requirements for our engineers to set-up and prove that the units are ready for service.

As part of this approach we welcome the opportunity to collaborate on all stages of the roll out in an area wherever possible.

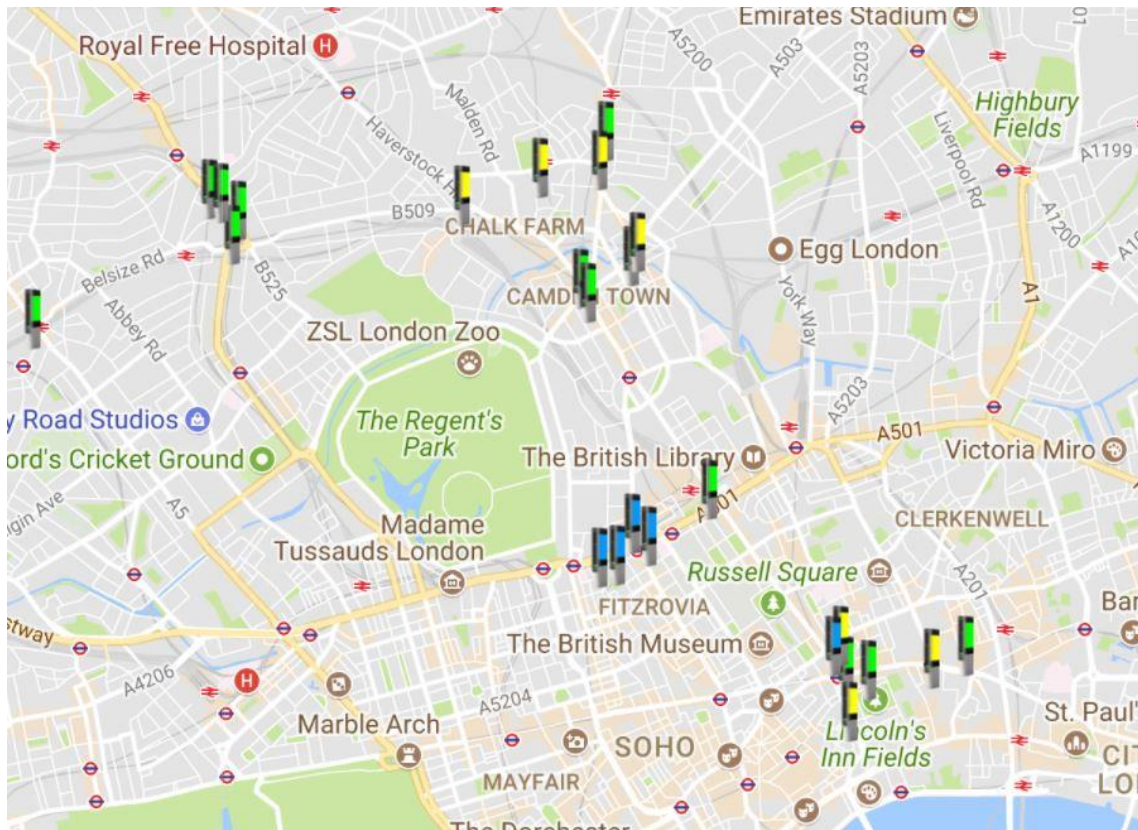


CMD-123 Hampstead Rd (OS No.29-31 West Euston Partnership Opp No.54)

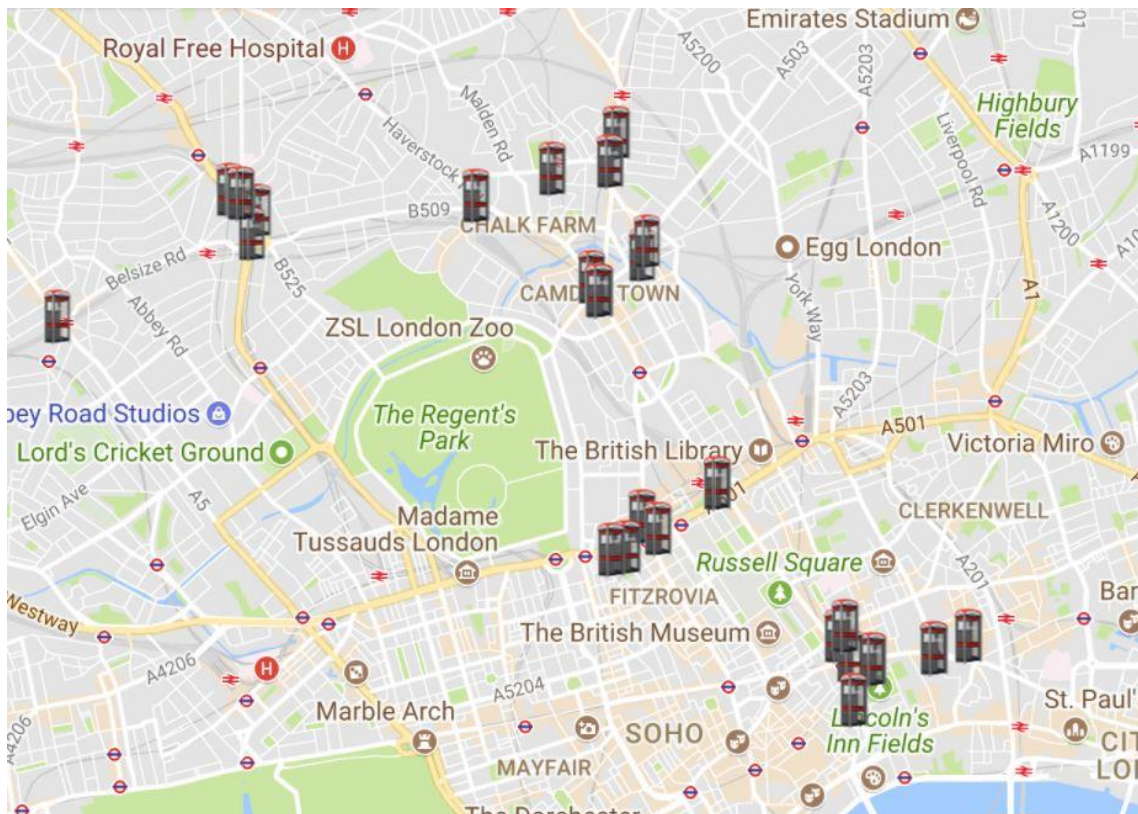
The Camden roll out

This application is part of wider scheme of InLink implementation across Camden and follows extensive pre-application engagement with the Council through a Planning Performance Agreement. Planning has already been granted by the Council for 13 InLink sites and 7 sites are awaiting determination. This latest tranche of applications includes a further 5 sites which have received positive feedback at the pre-application stage. A list of the 5 sites in this tranche is provide in the attached schedule.

The application package includes a rationalisation schedule, which sets out the locations of existing BT KX100 payphone kiosks which are to be removed as part of the rollout of InLinks, either through conversion or by removal sites in proximity to new sites. This will help to deliver a comprehensive network of connectivity within the borough whilst decluttering the street scene and removing 'hotspots' of anti-social behaviour.



Consent InLinks shown in green, InLinks in Planning shown in yellow; proposed InLinks shown in blue



BT Kiosks to be removed under existing consents and current proposals

CMD-123 Hampstead Rd (OS No.29-31 West Euston Partnership Opp No.54)

InLink design and technical information

The partnership between InLinkUK and BT is putting digital services on the street to help people and communities become better connected.

As part of this and funded through their installation, at least two non-listed BT payphones will be removed for each new InLink, allowing us to **return hundreds of square meters of valuable pavement space** to local communities and councils.

InLinks themselves are free-standing structures featuring digital display screens on two sides and a user interface based around an android tablet. The overall dimensions are 28cm deep, 79cm wide at ground level, 89cm wide at the top of the unit, with a height of 290cm. The narrower base reduces the street footprint further and gives a slender, elegant appearance.



In designing InLinks, the team have taken a user-centred approach: from the creation of an inviting, accessible, physical and digital design to the easiest-to-use and fastest public Wi-Fi available anywhere in the world, to creating a high value advertising programme in harmony with its surroundings that will set the standard for quality content and context relevance for the next decade.

InLinks are **durable and robust, yet elegant and timeless**. The tall and slender proportions, accentuated by the material treatment, result in a clean and aesthetically pleasing structure.

The touchscreen looks up, welcoming the user, while the small "privacy wings" give a sense of personal space without enclosures that invite antisocial behavior.

Integrated lighting above the interface panel illuminates this area, giving a sense of comfort and safety to the user when it is dark.

Accessible for all types of users

InLinks have been designed to be accessible to all users, regardless of their physical or technological capabilities, including:

- The tablet interface placed at 121cm to provide easy access, including for wheelchair users
- Braille embossed information on all key features and the numbered keypad
- Easy touch 999 call button to ensure it can be used regardless of mobility restriction (includes two push approach to reduce the chance of accidental calls)
- High-contrast large type labels help the visually impaired
- TalkBack functionality facilitates full access to the tablet for all users
- Hearing induction loops integrated into each unit
- The touch screen interface is designed to feel familiar to consumer tablet products.

We will shortly be introducing Next Generation Text Relay on to the InLinks which will further support people with a disability using the InLinks.



Connectivity through gigabit Wi-Fi

InLinks connect their communities to the fastest and most robust free public Wi-Fi service in the UK with speeds **up to 27 times faster than standard broadband¹** and connections able to handle large numbers of users without any reduction in speed.

Signing up is done through a **one-time email address registration** which then connects automatically whenever a user is in range of an active InLink. We do not sell these email addresses on, and have a customer-first policy to create the best experience possible for our users.

Each InLink also has in place content filtering, so accessing websites that are only suitable for adults will not be possible through our service.

Our Privacy Policy can be viewed at: <http://www.inlinkuk.com/privacy-policy>

Comparable Download Speeds

	InLink Wi-Fi (up to 1Gbps*)	Proposed UK Broadband Universal Service Obligation (10 Mbit/s)	Average UK Download as per figures from Ofcom (36.2 Mbit/s)
5 minute video (30MB approx.)	0.24 seconds	25 seconds	6 seconds
45 minute TV show (200 MB approx.)	1 second	3 minutes	46 seconds
2 hour film (1,00MB approx.)	8 seconds	14 minutes	4 minutes
2 hour HD film 4,000MB approx.)	33 seconds	56 minutes	15 minutes

¹Note: Actual performance will depend on a range of factors including but not limited to device performance and radio interference

Interactive tablet

Every InLink gives access to maps, directions, and city services from an easy-to-use touchscreen tablet. The tablet uses the popular Android operating system, which provides a service of 'tiles' that give access to:

- A link to the local council website
- BT's phone book
- Maps and wayfinding
- FAQs and instructions
- And much more!

InLink tablet sessions timeout after 30 seconds of inactivity or when selected, wiping all user sessions clean.

The open source licensing of this system also ensures continued support and advancement over the next decade. We will also look to work with partners to develop new apps to provide meaningful, local information

The tablet is a ring-fenced system that does not allow open web browsing.



CMD-123 Hampstead Rd (OS No.29-31 West Euston Partnership Opp No.54)

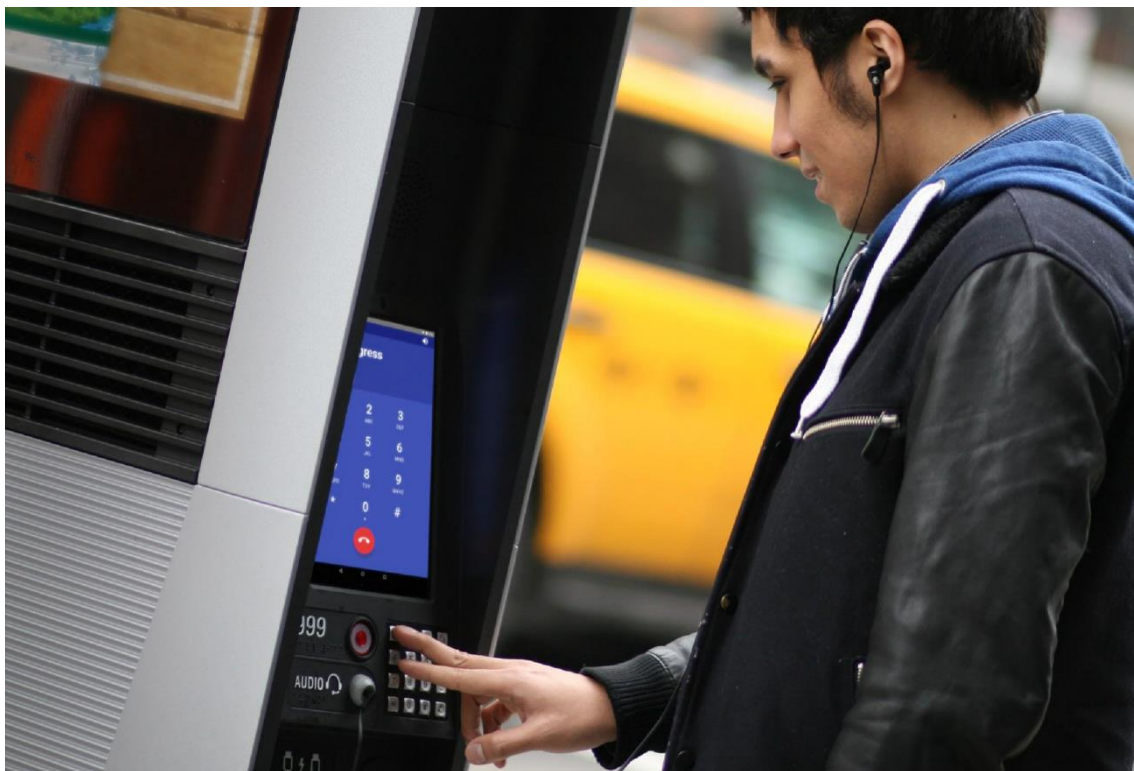
Free calls for everyone

InLinks allow users to make free calls to mobile, local and national phone numbers using two different methods:

- Using our directional speaker and built in microphone, equipped with noise-cancelling technology and an adjustable volume, to make calls that rival a traditional handset in clarity and quality
- By plugging in a standard headset or earphones into the built-in headphone jack in for additional privacy

The tablet and speaker are set back into the InLink and sheltered from the sides, allowing for a comfortable level of privacy for personal communications. In addition, the speaker volume is automatically reduced at night.

For international calling, users can purchase a calling card readily available at retail stores across the country.



Safer communities

Every InLink includes a **direct 999 call button** that connects users in an emergency to the relevant services.

When used, the call button **automatically shares the location** of the InLink with the authorities.

The design of the button is a two-push approach to reduce the chance of accidental calls; the first time a voice confirms that the user wishes to call the emergency services, prompting them to push the button a second time to confirm.

The InLinks can also support campaigns with local police and other authorities. For more information see the communities section below.



Secure fast charging

Each InLink includes **two marine grade, waterproof USB ports** featuring Quick Charge 2.0. The USB ports are connected directly to a power source only and cannot exchange data between devices and the InLink.

These USB ports are compatible with all mobile devices, but unlike traditional USB charging, they **also support the next generation of phones** with 20X the charging speed.

Users with compatible devices can get a **10% charge in under three minutes**, a great service to tourists and those in an emergency who may need to charge their personal devices.



Digital screens that dim at night

InLinks screens show a set of rotating content, serving as a key point of reference for local information and as an asset to the community.

InLink **digital screens dim in the evening** so they remain in harmony with the streetscape throughout the day and minimise disturbance to local residents. We continue to work with our technical teams to ensure the screen brightness meets community expectations at all times.

Outside of the allocations for community and council content (see below), we anticipate the screens will showing commercial content from businesses, including local SME's, helping fund the range of InLink services being provided to the local community

InLinkUK's designers also create 'house content' throughout the year relating to key events and holidays e.g. Black History Month, community events and meetings, Christmas and Valentine's Day.

For full specifications of our screens please refer to the 'Proposed Schedule of Operating Conditions for InLinkUK Advertising Screens' included below.

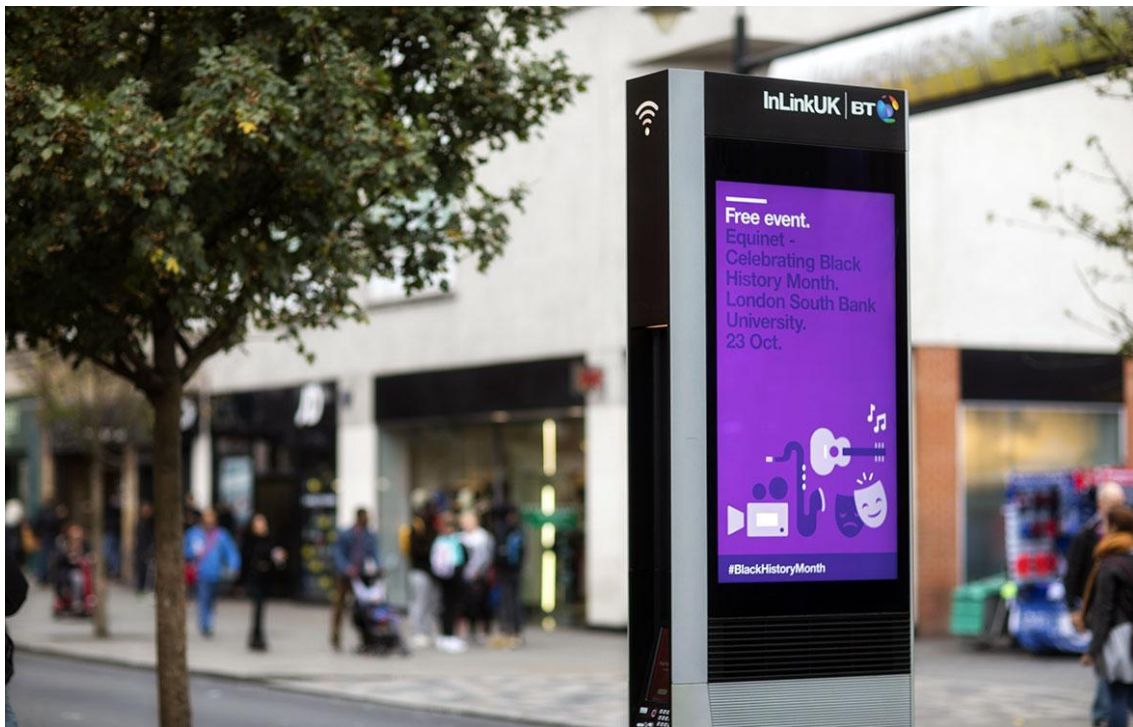


Environmental performance

All InLinks are **powered by 100% renewable energy**, with energy efficiency prioritised throughout the design process.

Our design incorporates the following energy-saving strategies:

- A state-of-the-art LED-backlit LCD screen that consumes approximately 60% less power than Cold Cathode Fluorescent Tubes
- Filters on the screens reflect light reducing the need for high power, noisy cooling systems typically seen in competing solutions
- Industrial-grade components designed to function at high temperatures lower the need for cooling without compromising performance
- Passive design for cooling where applicable, along with the use of aluminum for better thermal dissipation
- High-efficiency power supplies providing 80% or better efficiency, compared to 65-70% of typical components.



CMD-123 Hampstead Rd (OS No.29-31 West Euston Partnership Opp No.54)

Materials and maintenance

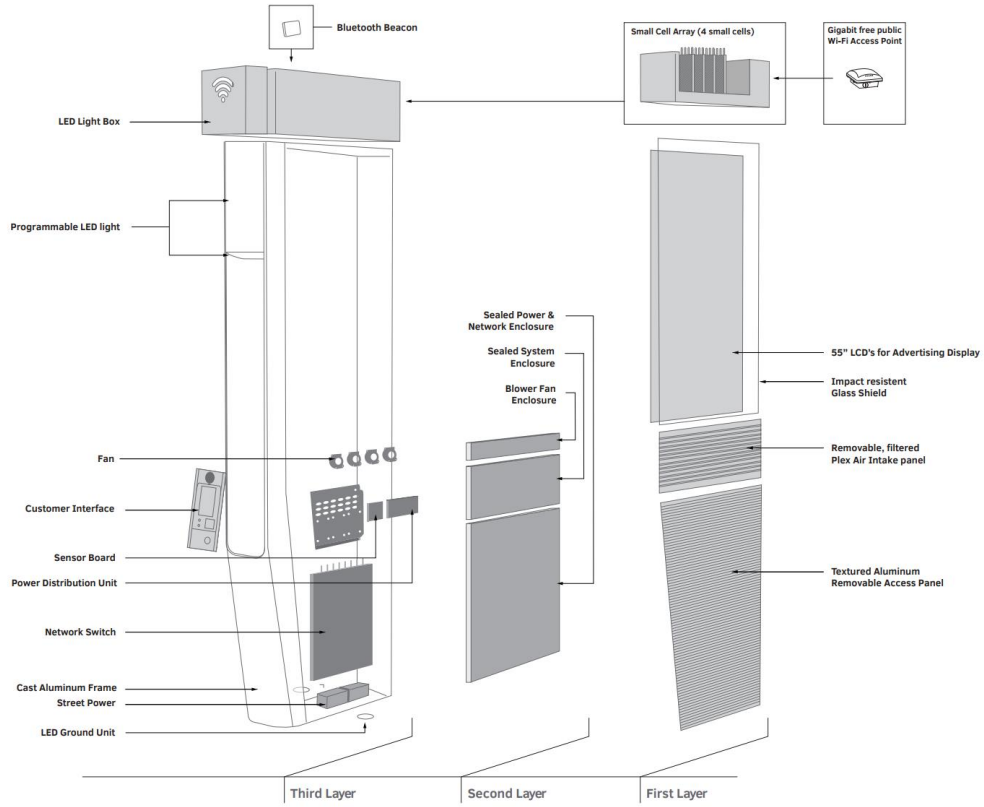
Maintainability and durability were key considerations in the design of the InLink, with each cleaned every two weeks with additional servicing provided as required through our ongoing support processes.

The main casing of an InLink is aluminum, a material which is attractive, durable, easy to service and conducive to cooling internal components.

The large displays are fronted by tempered and laminated glass, and interface panels and vent areas are painted powder-coated aluminum. These high quality materials ensuring the longevity of the InLink by enabling them to hold up to abuse and vandalism, and diminish the appearance of scratches.

The modular design of exterior and interior components means that servicing damages or basic wear and tear is simple and economical.

We are committed to the maintenance and cleaning of InLinks at each location to keep them in a condition to which we are proud and encourage users to enjoy them.



Emergency messaging

The digital screens and the back-end systems allow us to control the screens dynamically through our head office.

In the event of an emergency or major event, this has the potential to allow us to stop content or advertising and place urgent, useful messaging on to the dynamic screens alerting members of the public to major incidents which will impact them.

Given that each InLink is addressable, we can give very specific instructions on each unit—for example, steering people away from a particular area and providing alternatives to travel.

This feature is currently under development with updates to be provided as it progresses.



Smart city sensors, data, and the Internet of Things

InLinks have been designed with the ability to collect useful, real-time data and insights from the communities they are in to help government officials and local decision makers make the most of the space around them.

The modular nature of the build of InLinks allows us to evaluate and invest in the best tools and techniques of collecting meaningful insights for the community as sensor technology evolves.

We are anticipating introducing sensors that can anonymously monitor things like:

- Air quality monitoring (currently being trialed)
- Pedestrian movement
- Traffic movement
- Bike and vehicle counting
- Environmental factors like sound and light

And through continued investment, we will continue to explore what other smart city sensor and data information we can provide to improve public wellbeing and health in cities.

This kind of **data is most powerful when shared**, and we would look to make these urban insights readily available to the community.²

² Within the constraints of our Privacy Policy



Content standards

Primesight work closely with the advertisers, brands and specialist, and any advertisement on the InLink screens comply with the Committee of Advertising Practice (CAP) Code of Practice.

Primesight also work within the guidance provided in the Guidance for Digital Roadside Advertising and Proposed Best Practice from Transport for London and resources from other authorities as necessary.

Primesight are also guided by the UK code of Non Broadcast Advertising and Direct Promotional Marketing (CAP) Self Regulation Guidelines.

For full specifications of our screens please refer to our '*Proposed Schedule of Operating Conditions - InLinkUK Advertising Screens*' included below.



Useful real-time information

We are currently running real-time information from a range of sources, including local weather and transport information.

In London we display real-time Transport for London (TfL) tube status information, and are exploring with TfL how we might be able to incorporate other transport information to help people get around the city.

In the future we are looking for other open API's to allow us to create further localised content relevant to the community. Similarly, we welcome the opportunity to work with local authorities, transport providers, and others to determine what real-time information is most useful to the area and how it can be integrated into the InLinks.



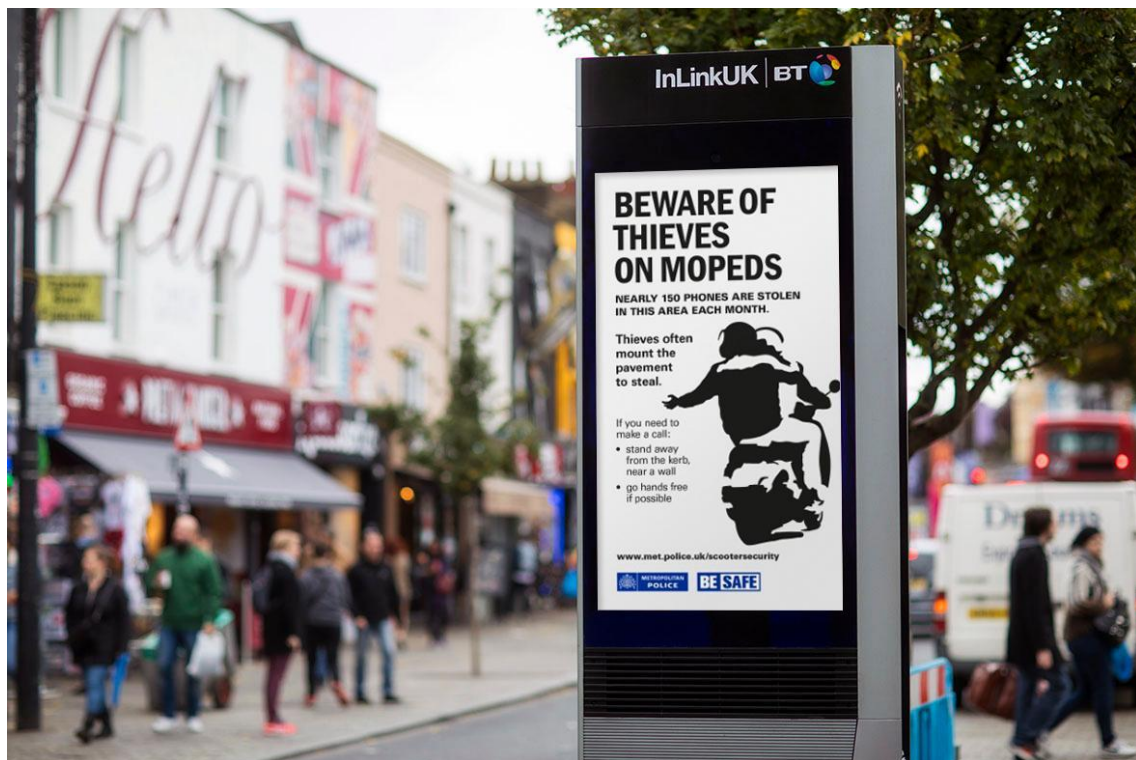
Allocation for community and council content

The rotating content on each InLink includes an allocation for community content provided by the local council and community.

Camden will be provided with 5% of screen time on each InLink to promote and educate. This allocation is equivalent to 438 hours of screen time on each InLink every year.

This content would be scheduled and (where needed) developed in partnership with InLinkUK and Primesight, and can tell residents and visitors about local services, local events and news, as well as warnings and public notices.

InLinks are more than just an advertising screen— they are already a key point of reference for local information and as **an asset to the community**.



Advertising for businesses of all sizes

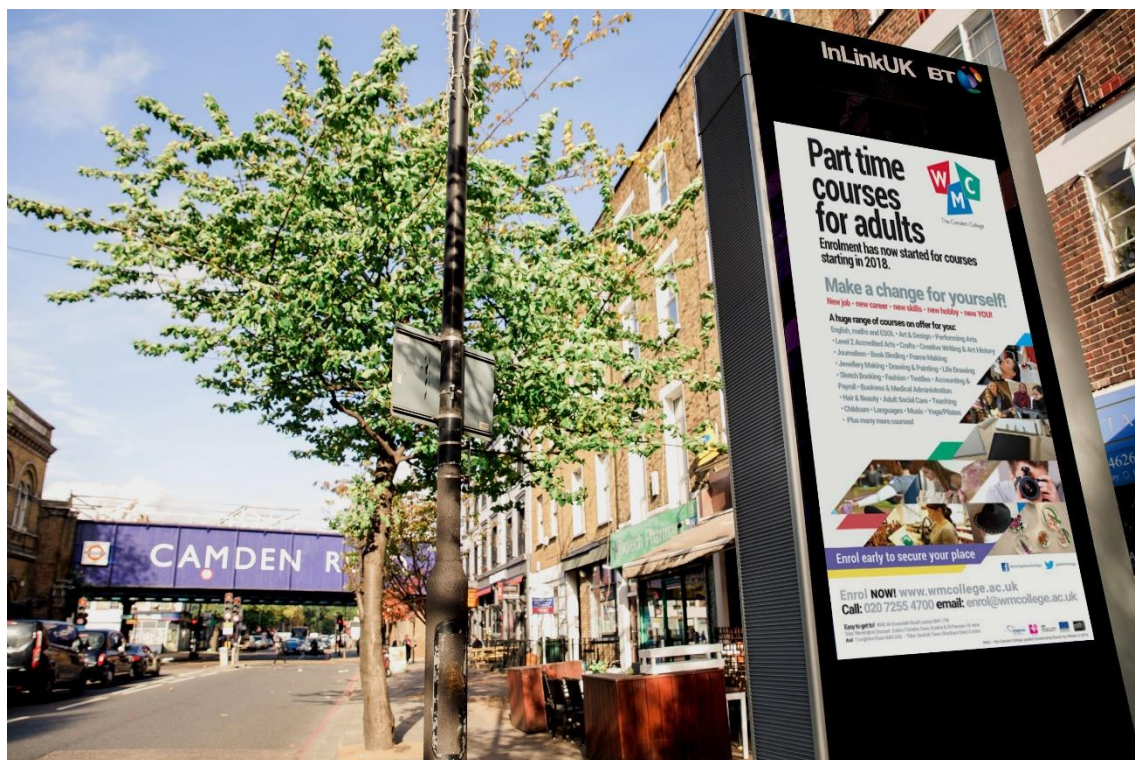
InLinkUK represents **the latest in advertising platforms**, and with locations positioned to uniquely partner with local businesses. An example is included below from The Camden College.

To best support local small businesses, we have developed an affordable, accessible digital advertising solution that specifically targets InLinks close to their location.

The Primesight sales team (who are responsible for all of the paid for messaging that appears on InLink screens) is setup to **work in partnership** with businesses classified as Small and Medium-sized Enterprises to enable these partners to use the screens to reach the audiences they need to drive business growth.

The revenue made from advertising allows us to provide all of our services free of charge to communities, as well as further the InLink roll out.

Outside of what is available today, Primesight is looking at innovative ways to work with clients on this new platform to leverage its digital capabilities to create more dynamic content for the InLink screens, including the ability to leverage real-time data sources such as weather to power advertiser creative.



CMD-123 Hampstead Rd (OS No.29-31 West Euston Partnership Opp No.54)

Site information

SSP Ref	CMD-123
Address	Hampstead Rd (OS No.29-31 West Euston Partnership Opp No.54)
Postcode	NW1 3JA
Lat/Long	51.526191, -0.138713
Conversion/New Site/Relocation	New Site
TfL Red Route	Yes
Conservation Area	n/a
Proximity to Statutory Listed Buildings	n/a
Existing Kiosk to be Removed 1	Hampstead Road (outside no 108 Margarete Centre)
Lat/Long	51.528145, -0.13852216
Existing Kiosk to be Removed 2	William Rd (Jct Stanhope St)
Lat/Long	51.527254, -0.140712

Pre-application consultation and key stakeholder engagement

The applicant has engaged in a detailed pre-application process as part of a Planning Performance Agreement. This has included engagement with the Council's Planning, Highways and Conservation officers. Each site has been visited with officers to ensure that the locations are appropriate, and amendments have been made where necessary. This application is 1 of 5 sites considered to be appropriate for submission following the initial pre-application process.

Planning application

The application is for Full Planning Permission under section 62 of the Town and Country Planning Act 1990 [the 1990 Act] and Express Advertisement Consent under regulation 9 of the Town and Country Planning (Control of Advertisements) (England) Regulations 2007 [the Regulations].

Applications for planning permission must be determined in accordance with the Development Plan unless material considerations indicate otherwise (Section 38(6) of the Planning and Compulsory Purchase Act 2004 and section 70(2) of the 1990 Act).

As per regulation 3 of the Regulations, applications for express advertisement consent must be determined in the interests of amenity and public safety, taking into account (a) the provisions of the development plan, so far as they are material, and (b) any other relevant factors.

UK Digital Strategy

Digital connectivity is now a utility, and modern life is increasingly impossible without it. Connectivity drives productivity and innovation, and is the physical underpinning of a digital nation.

UK Digital Strategy 2017

Being connected is fundamental to success in our modern world and InLinks provide a cost-free way for communities to get online and take advantage of available opportunities.

Every individual and every business should have the skills and confidence to seize the opportunities of digital technology and have easy access to high-quality internet wherever they live, work, travel or learn.

The Rt Hon Karen Bradley MP

Former Secretary of State for Digital, Culture, Media and Sport (July 2017-Jan 2018)

InLinkUK from BT is helping close the digital divide that still leaves too many Britons at a disadvantage. For example, 20% of Manchester InLinks will be in the most deprived 30% of local areas nationally enabling residents in these areas to access free wi-fi, as well as the other free services provided from the InLinks.

National Planning Policy

National Planning Policy Framework (2012)

The National Planning Policy Framework (NPPF) sets out the Government's planning policies for England and how these are expected to be applied and is considered to be a material consideration for both the Planning Permission application and the Express Advertisement Consent application.

The NPPF supports the provision of high quality communications infrastructure. These relevant policies are set out below:

Paragraph 42

Advanced, high quality communications infrastructure is essential for sustainable economic growth. The development of high speed broadband **technology** and other communications networks also plays a vital role in enhancing the provision of local community facilities and services.

Paragraph 45

Applications for telecommunications development (including for prior approval under Part 24 of the General Permitted Development Order) should be supported by the necessary evidence to justify the proposed development. This should include:

- the outcome of consultations with organisations with an interest in the proposed development, in particular with the relevant body where a mast is to be installed near a school or college or within a statutory safeguarding zone surrounding an aerodrome or technical site; and
- for an addition to an existing mast or base station, a statement that self-certifies that the cumulative exposure, when operational, will not exceed International Commission on non-ionising radiation protection guidelines; or
- for a new mast or base station, evidence that the applicant has explored the possibility of erecting antennas on an existing building, mast or other structure and a statement that self-certifies that, when operational, International Commission guidelines will be met.

Paragraph 46

Local planning authorities must determine applications on planning grounds. They should not seek to prevent competition between different operators, question the need for the telecommunications system, or determine health safeguards if the proposal meets International Commission guidelines for public exposure.

The NPPF states the following specifically in relation to advertisement control:

Paragraph 67:

Poorly placed advertisements can have a negative impact on the appearance of the built and natural environment. Control over outdoor advertisements should be efficient, effective and simple in concept and operation. Only those advertisements which will clearly have an appreciable impact on a building or on their surroundings should be subject to the local planning authority's detailed assessment. Advertisements should be subject to control only in the interests of amenity and public safety, taking account of cumulative impacts.

The London Plan 2016

The London Plan is the overall strategic plan for London, setting out an integrated economic, environmental, transport and social framework for the development of London over the next 20-25 years. The following policies are considered relevant:

Policy 4.11 – Encouraging a connected economy (Strategic A):

The Mayor and the GLA Group will, and all other strategic agencies should

a) facilitate the provision and delivery of the information and communications technology (ICT) infrastructure a modern and developing economy needs, particularly to ensure: adequate and suitable network connectivity across London (including well designed and located street-based apparatus); data centre capability; suitable electrical power supplies and security and resilience; and affordable, competitive connectivity meeting the needs of small and larger enterprises and individuals

b) the use of information and communications technology to enable easy and rapid access to information and services and support ways of working that deliver wider planning, sustainability and quality of life benefits.

Camden local policy

Camden Digital Strategy and the Camden Plan (Core Strategy)

The Camden Digital Strategy sets out an active digital strategy for Camden to address the strategic objectives of the Camden Plan:

It is considered that InLinks support the Camden Digital Strategy in the following ways:

- Developing new solutions with partners to reduce inequality – All services on InLinks are free, opening up the opportunities of digital connectivity to all residents and visitors equally.
- Creating the conditions for and harnessing the benefits of economic growth – The free services on InLinks are funded by advertising revenue, providing a public benefit as well as economic benefit to the service provider.
- Investing in our communities to ensure sustainable neighbourhoods – The investment provided by InLinkUK will directly benefit the communities that it covers, both in terms of the services provided and the visual improvements to the local amenity through upgrading to InLinks and reducing the number of existing, traditional payphones.

There are additional benefits applicable to Camden, as called for in the Camden Digital Strategy. This sets out that:

"Camden wants to realise how digital technology and Big Data can be a way to save money and improve services through co-production, collaboration, and challenge by residents and businesses."

To that end, InLinks can help by:

- Providing opportunity to get closer to communities and for residents to feel connected to the Council – InLinks will provide residents access to council and other essential services.
- Supporting the delivery of consultation by the Council – There is the potential for innovative access to decision-making and to reach seldom-heard groups.
- Helping to make Camden a place where people feel safe - InLinks offer 24/7 emergency services, as well as a display network on which to share key information in the event of an emergency or disaster.

Also relevant is Core Strategy Policy CS5, which seeks to ensure that the impacts of growth are appropriately managed to meet the needs of Camden's population and contribute to the borough's London-wide role. It is considered that the InLinkUK network in Camden would make an important contribution to the borough's London-wide role.

Camden Development Policies 2010-2025

The following Camden Development Policies are considered relevant:

- DP24 Securing high quality design
- DP25 Conserving Camden's heritage
- DP29 Improving access

The applicable parts of each policy are detailed below:

DP24 Securing high quality design

'The Council will require all developments, including alterations and extensions to existing buildings, to be of the highest standard of design and will expect developments to consider:

a) character, setting, context and the form and scale of neighbouring buildings;

...

c) the quality of materials to be used;

...

i) accessibility.'

DP25 – Conserving Camden's heritage

'Conservation areas

In order to maintain the character of Camden's conservation areas, the Council will:

a) take account of conservation area statements, appraisals and management plans when assessing applications within conservation areas;

b) only permit development within conservation areas that preserves and enhances the character and appearance of the area;

...

d) not permit development outside of a conservation area that causes harm to the character and appearance of that conservation area; and

...

Listed buildings

To preserve or enhance the borough's listed buildings, the Council will:

...

g) not permit development that it considers would cause harm to the setting of a listed building.

...

Other heritage assets

The Council will seek to protect other heritage assets including Parks and Gardens of Special Historic Interest and London Squares.'

DP29 – Improving access

'The Council will seek to promote fair access and remove the barriers that prevent people from accessing facilities and opportunities. We will:

a) expect all buildings and places meet the highest practicable standards of access and inclusion;

b) require buildings and spaces that the public may use to be designed to be as accessible as possible;

c) expect facilities to be located in the most accessible parts of the borough;

...'

Siting justification against planning policy

The siting criteria used to site each InLink in the network across London include Planning and Urban Design criteria relating to visual character of the street scene, proximity to sensitive heritage assets, overall scale of setting, pavement width, and surrounding land uses and social context in accordance with local policy requirements.

Justification of the siting of the InLink at **Hampstead Rd (OS No.29-31 West Euston Partnership Opp No.54)** is detailed below against the local policy requirements:

Character of the local street scene/context and amenity (NPPF para. 67, DP24, DP25) –

The site is located on Hampstead Road, outside No.29-31 West Euston Partnership. The setting is predominantly commercial with large buildings and expansive pavements. There is also a strong presence of poster advertising including digital advertising within the area. The pavement is sufficiently wide to accommodate the InLink. The InLink is of a high quality design and construction and it is considered that it would be in keeping with the scale and character of its setting. As such, it is considered to be a positive addition to the street scene. It is proposed to remove two existing BT telephone kiosks as part of the overall scheme and this is considered to be to the benefit of visual amenity. The proposal as a whole is considered to have a positive impact on the affected street scenes.

Reduction of street clutter (DP24, DP25) – The InLink has a significantly reduced footprint when compared to conventional telephone kiosks and two KX100 telephone kiosks are proposed to be removed as part of the application as detailed above. The proposal would therefore reduce street clutter.

Public safety, visibility splays and footway widths (NPPF para. 67, DP29) – The position of the InLink would not interrupt any highway safety visibility splays or sightlines. The advertising screens would operate within the limits agreed on existing similar digital screens in Camden (based on Waterman/Transport for London safety guidelines as detailed above). There are no other apparent public safety issues.

Protection of heritage assets (NPPF para. 67, DP25) – The site is not within a conservation area and no other heritage assets are affected by the proposal. There is considered to be no adverse effect on any heritage assets.

Provision of high quality telecommunications infrastructure (NPPF para 42-43, London

Plan Policy 4.11) – The InLink would clearly provide high quality telecommunications facilities as set out above. The proposed location is accessible to a large number of workers, tourists and residents as part of the wider InLinkUK network.

Accessibility (DP24, DP29, CS5) – The InLink is designed for accessibility as set out above.

The location has sufficient footway widths and is appropriately positioned to allow maximum accessibility to users.

Conclusion

InLinkUK has the potential to significantly enhance the provision of local community communications facilities and services (Sec. 5 of NPPF and London Plan Policy 4.11).

InLinks are of a high quality, accessible design that would be a revolutionary improvement over the existing kiosks (DP24, DP29, CS5).

The application InLink would be located within an appropriate context (NPPF para. 67, DP24, DP25); it would reduce street clutter (DP24, DP25); it would maintain sufficient footway widths and visibility splays (NPPF para. 67, DP29); would not adversely affect heritage assets (NPPF para. 67, DP25); and, would not otherwise adversely affect amenity or public safety.

Therefore, the proposal is considered to be accordant with the relevant policy framework and would not adversely affect amenity or public safety. As such, it is considered that Planning Permission and Express Advertisement Consent should be granted.

Appendices

About BT

BT is one of the world's leading communications services companies, serving the needs of customers in the UK and across the world, where they provide fixed-line services, broadband, mobile and TV products and services as well as networked IT services.

In the UK they are a leading communications services provider, selling products and services to consumers, small and medium sized enterprises and the public sector.

They also sell wholesale products and services to communications providers in the UK and around the world. Globally, they supply managed networked IT services to multinational corporations, domestic businesses and national and local government organisations.

Website: <http://www.btplc.com/Thegroup/Ourcompany/>



Proposed Schedule of Operating Conditions – InLinkUK Advertising Screens

The technical specification of the advertisement screens are as follows.

Screen Panel Type:	LCD
Panel Size:	55 inches
Resolution:	1920(RGB)×1080, FHD
Maximum Potential Brightness:	2500 cd/m ² (Typ.)
Contrast Ratio:	5000:1 (Typ.)
Display Colours:	16.7M (8-bit), CIE1931 72%
Viewing Angle:	178/178 degrees
Lamp Type:	WLED

Operating Conditions

Operating Temperature:	0 ~ 50 °C
Sunlight Readable:	Yes
Landscape or Portrait:	Landscape / Portrait (Link fixed in Portrait)

The proposed usage regime for the screens has been set in accordance with Transport for London's (TfL) policy document 'Guidance for Digital Roadside Advertising and Proposed Best Practice – 2013' [the TfL Guidance].

The recommended conditions are as follows:

1. The intensity of the illumination of the digital sign shall not exceed 600 candelas per square metre between dusk and dawn in line with the maximum permitted recommended luminance as set out by 'The Institute of Lighting Professional's 'Professional Lighting Guide 05: The Brightness of Illuminated Advertisements'.
2. The digital sign shall not display any moving, or apparently moving, images (including animation, flashing, scrolling three dimensional, intermittent or video elements).
3. The minimum display time for each advertisement shall be 10 seconds.

4. The interval between advertisements shall take place over a period no greater than one second; the complete screen shall change with no visual effects (including swiping or other animated transition methods) between displays and the display will include a mechanism to freeze the image in the event of a malfunction.
5. No advertisement displayed shall resemble traffic signs, as defined in section 64 of the Road Traffic Regulation Act 1984.

In addition to the above, each proposal has been assessed against and would comply with the following additional criteria from the TfL Guidance.

- There would be no conflict with any traffic signs, signals, crossing points, schools, hospitals or low bridges.
- No sightlines or clearances would be affected.
- The TfL guidance states that 'Static digital advertising is likely to be acceptable in locations where static advertising exists or would be accepted.' There are existing traditional advertisement on similar sections of the respective roads in many cases.
- The geometry of the roads are not complicated and the driving conditions are not considered to be demanding or complicated.
- The advertisements would not be experienced by a driver in conjunction with any other similar digital advertisements.
- As per the TfL guidance, the advertisements would be located as close to the driver's natural eye line as possible and facing as head-on to the traffic as is practical.

The lighting levels would be within the guidance contained in the Institute of Lighting Professional (ILP) Technical Note 5. Each display features automatic luminance adjustment.

Dusk to dawn levels would be limited to 600 c/m² and daytime levels adjusted automatically as per the guidance, up to a maximum potential brightness of 2500c/m².