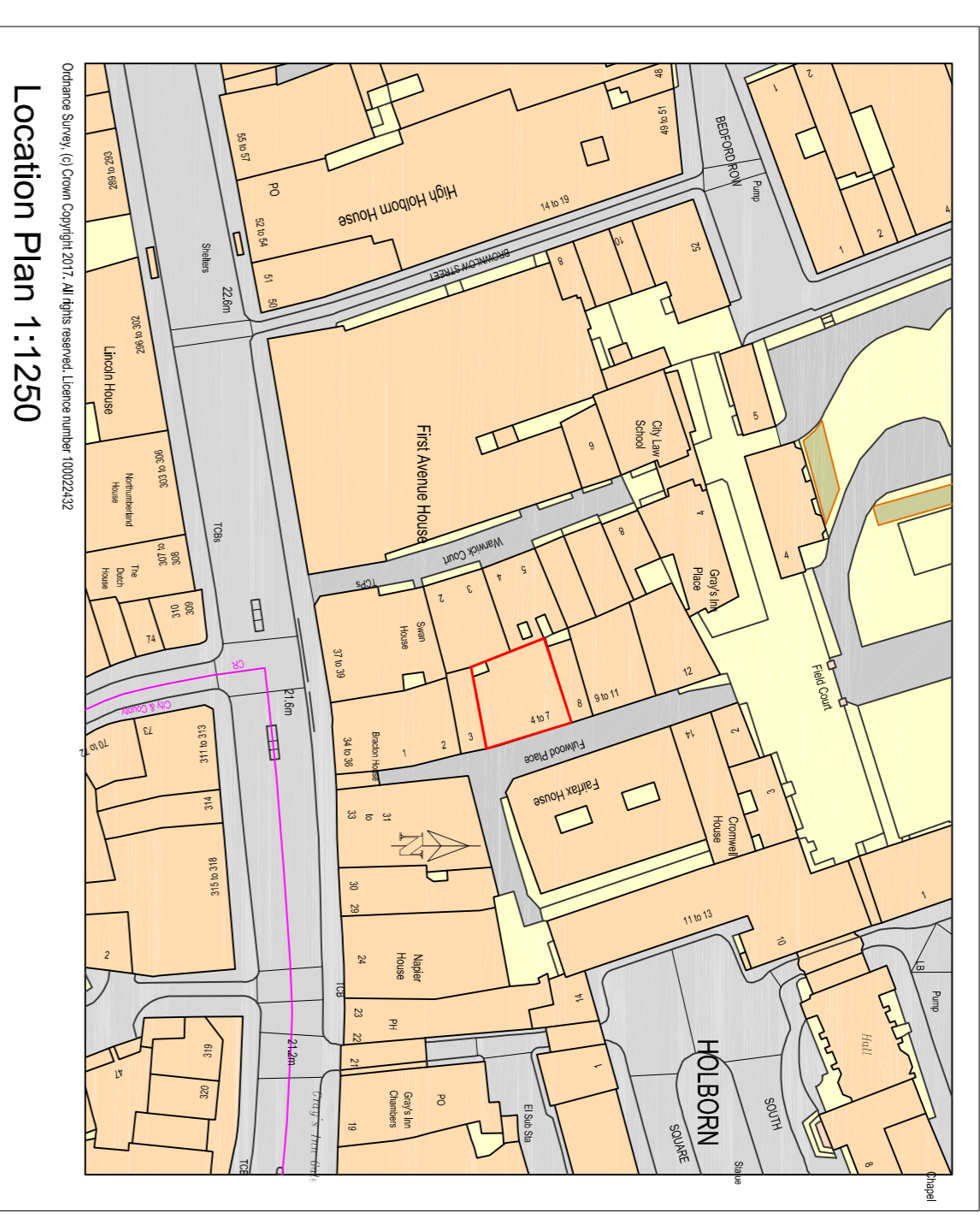
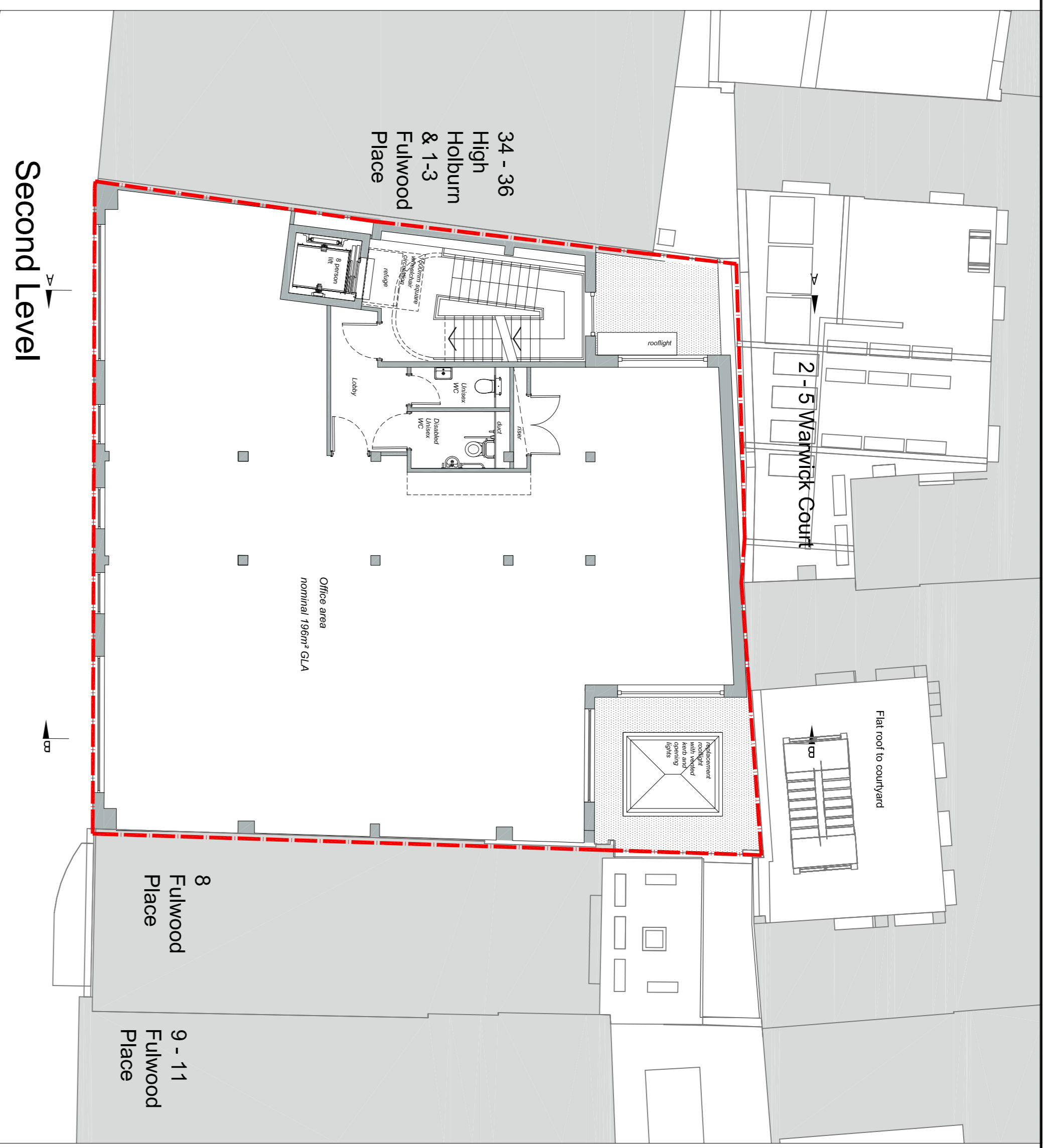
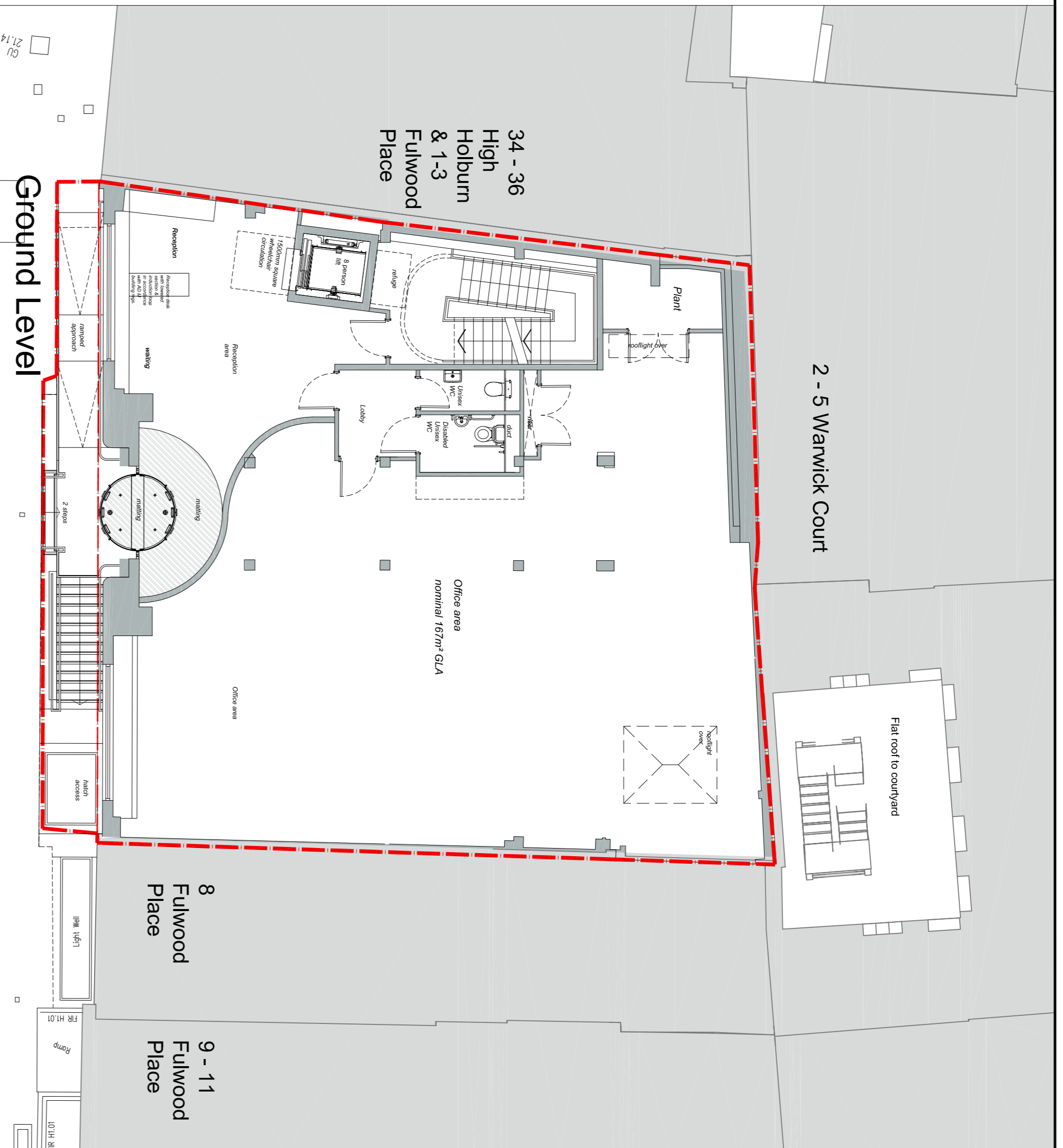


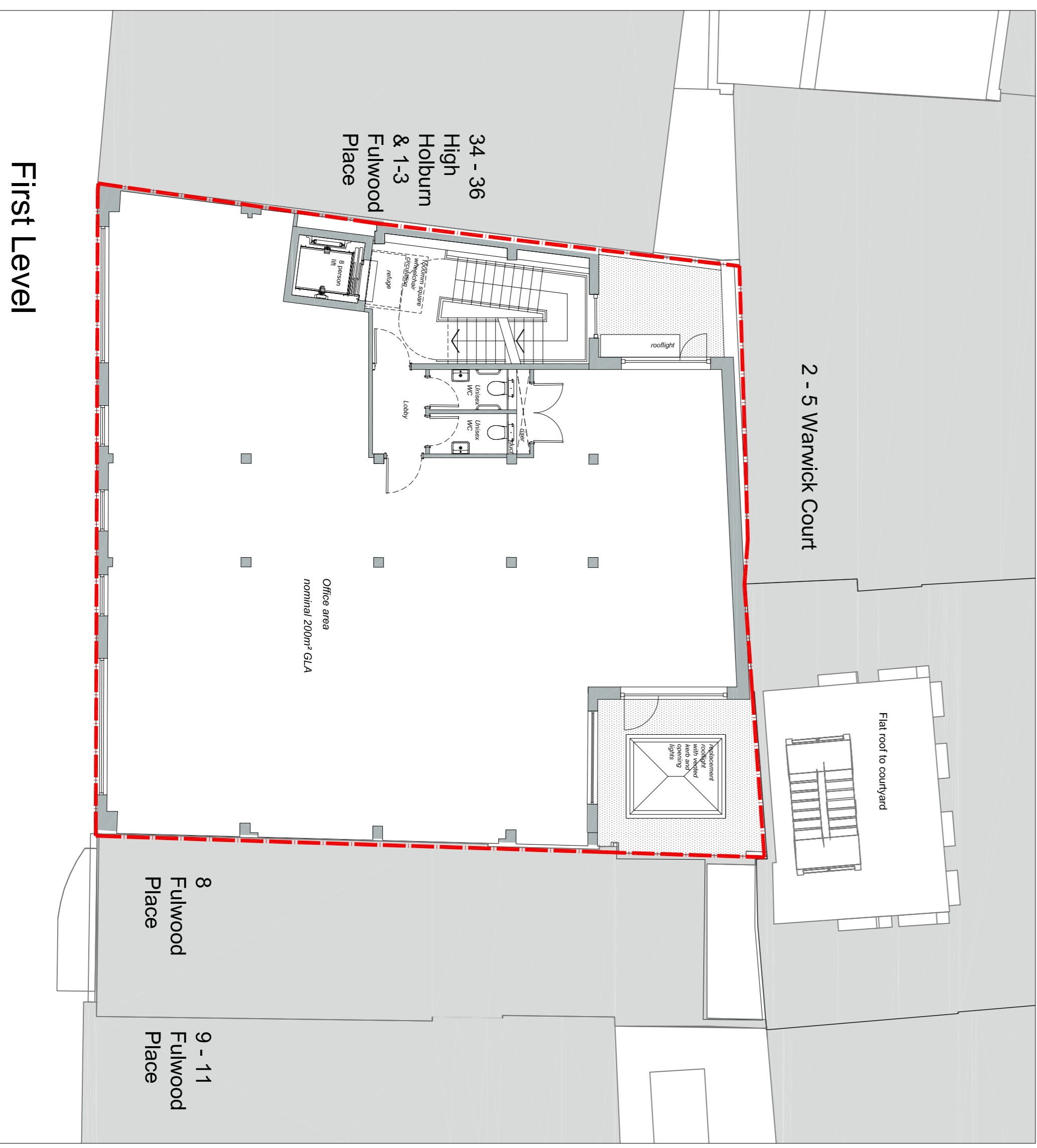
The drawings are copyright and they are the exclusive property of the architects. No part of these drawings may be reproduced, stored in a retrieval system, or transmitted in any form or by any means, electronic, mechanical, photocopying, recording, or by any information storage and retrieval system, without the prior written permission of the architects. The architects accept no liability for any errors or omissions in these drawings, and they do not accept any responsibility for any consequences arising from the use of these drawings. The architects accept no liability for any errors or omissions in these drawings, and they do not accept any responsibility for any consequences arising from the use of these drawings.



Location Plan 1:1250
Scale - 1:1250
0m 20m 40m 60m 80m 100m



Second Level
Scale - 1:100
0m 20m 40m 60m 80m 100m



Scale 1:1000

E	Amendments to W.C. & Entrance ramp	02.02.2018
D	Planning submission	10.10.2017
C	Referential to full building survey and layout amended to suit and including Client feedback	07.08.2017
B	ACU product amended	03.04.2017
A	Final planning submission	10.06.2017
R	Revision / Description	Rev. by / Date

gcp Chartered Architects
architects project management sustainable design

Scale 1:1000
Sally To, Contract 2
Carmel Kelly
Bridget Roberts
E: 01753 991000
www.gcparchitects.co.uk

Project Title: Elizabeth House
4-7 Fulwood Place - London

Drawing Title: Proposed Location Plan & Proposed floor plans
Lower ground, Ground, First & Second

Drawn By: TML
Checked By: JPL
Date: June 2017
Scale: 1:1250 (08 A1)

Drawing No: 17008/203
Rev: E
Status: PLANNING