

## Audience and Staff Facilities

The existing audience and staff facilities will be refurbished and where possible extended and improved to create a better experience for building users.

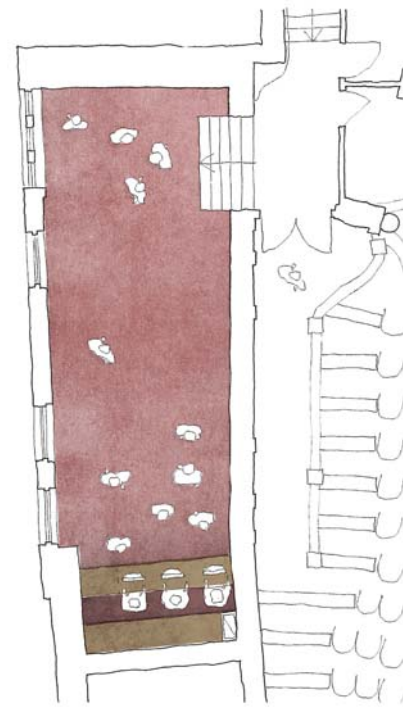
Currently the building is under provided with bar space and WCs, but opportunities exist to create more space on every floor of the building. By removing a redundant stair serving the Grand Circle space is freed up for additional WCs – rationalised to one side of the building and distributed across floors to match the audience capacities throughout the auditorium.

Bars are extended and entrances to bars are widened to help the flow of people. All bars will now be separated from the auditorium by a set of double doors, allowing Staff to continue working as the show goes on. Air conditioning units will be hidden behind service walls.

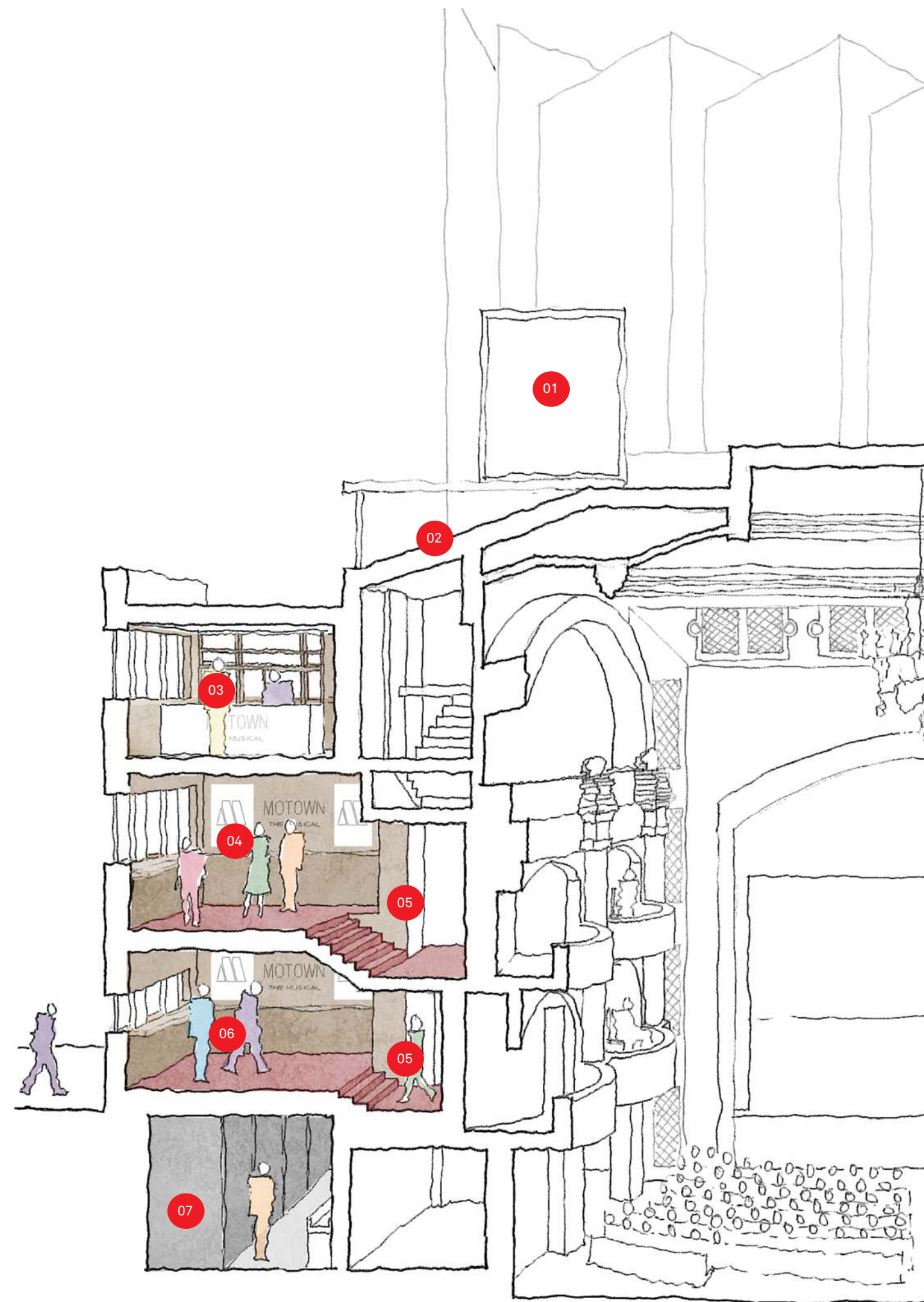
A new staff changing rest area accessed directly from the stair core and with access to fresh air and natural light is created on the third floor. Existing staff areas are refurbished throughout. A new hospitality suite is created from redundant plant spaces in the basement, with natural light brought in through the new pavement lights in the basement box.



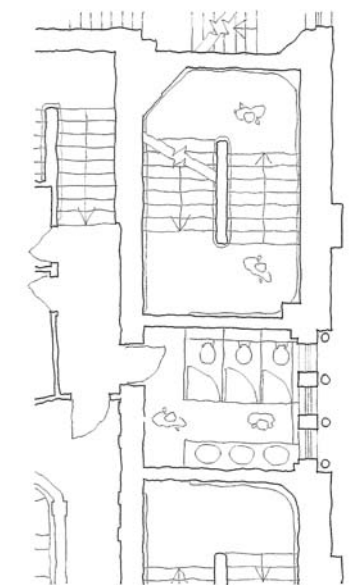
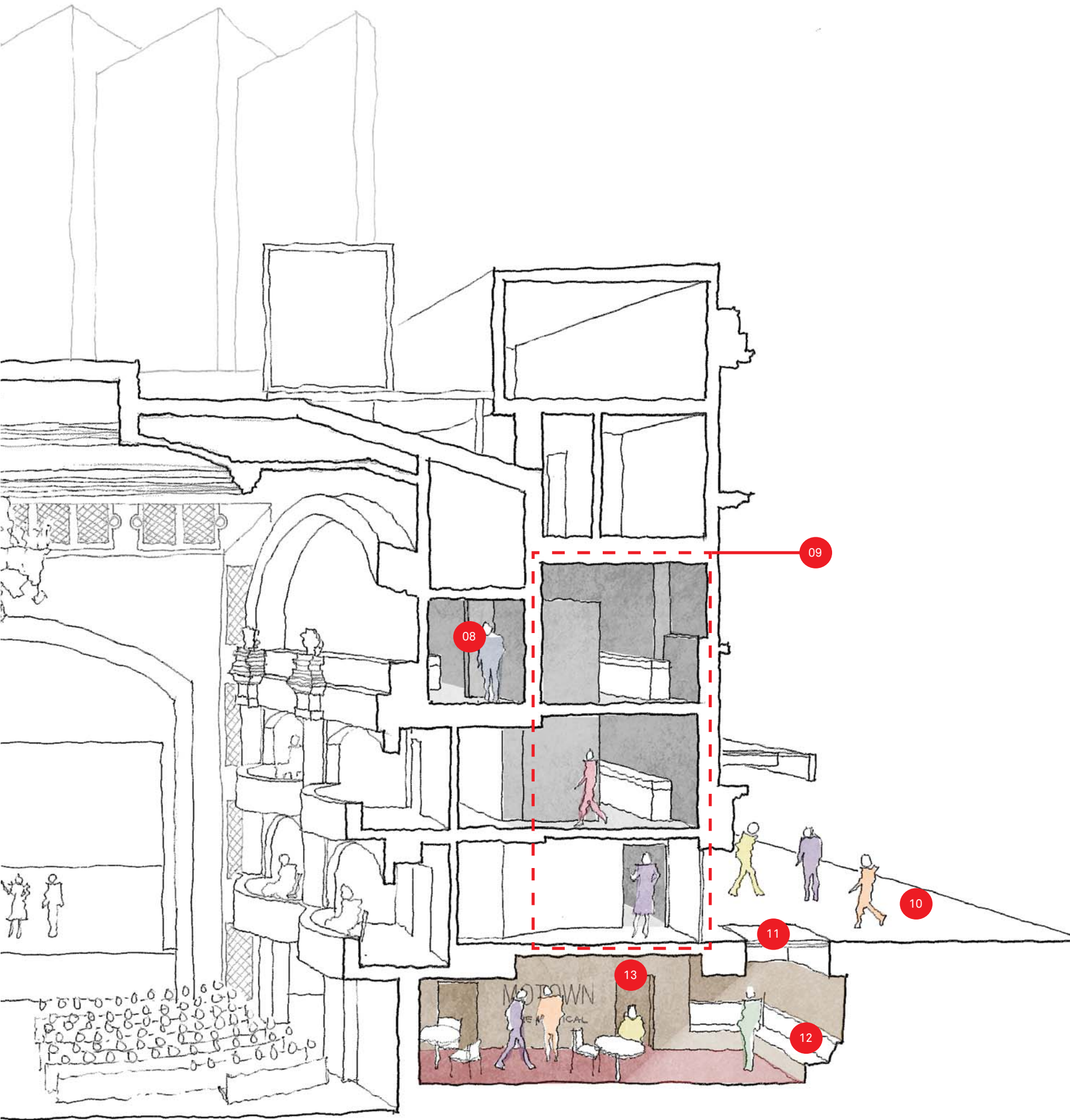
—Royal bar Existing Plan



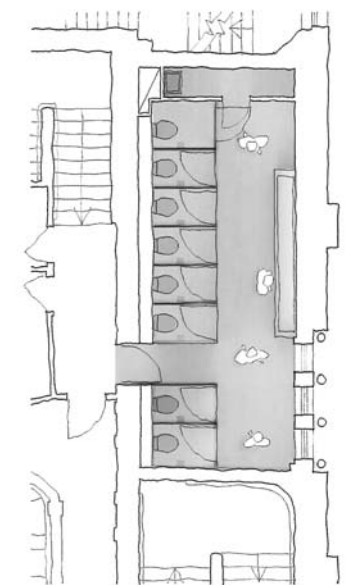
—Royal bar Proposed Plan







—First floor WCs Existing Plan



—First floor WCs Proposed Plan

- 01. New mechanical plant sitting on new roof grillage

---

- 02. Roof waterproofing upgraded

---

- 03. Grand bar refurbished

---

- 04. Royal bar refurbished and extended

---

- 05. Entrances rationalised and widened

---

- 06. Circle bar refurbished and extended

---

- 07. Female WCs replace existing stalls bar

---

- 08. New WCs in place of existing FoH staff area and Maintenance Office

---

- 09. Stair removed and replaced with WCs

---

- 10. High Holborn

---

- 11. Pavement lights

---

- 12. New hospitality suite

---

- 13. New WC

---



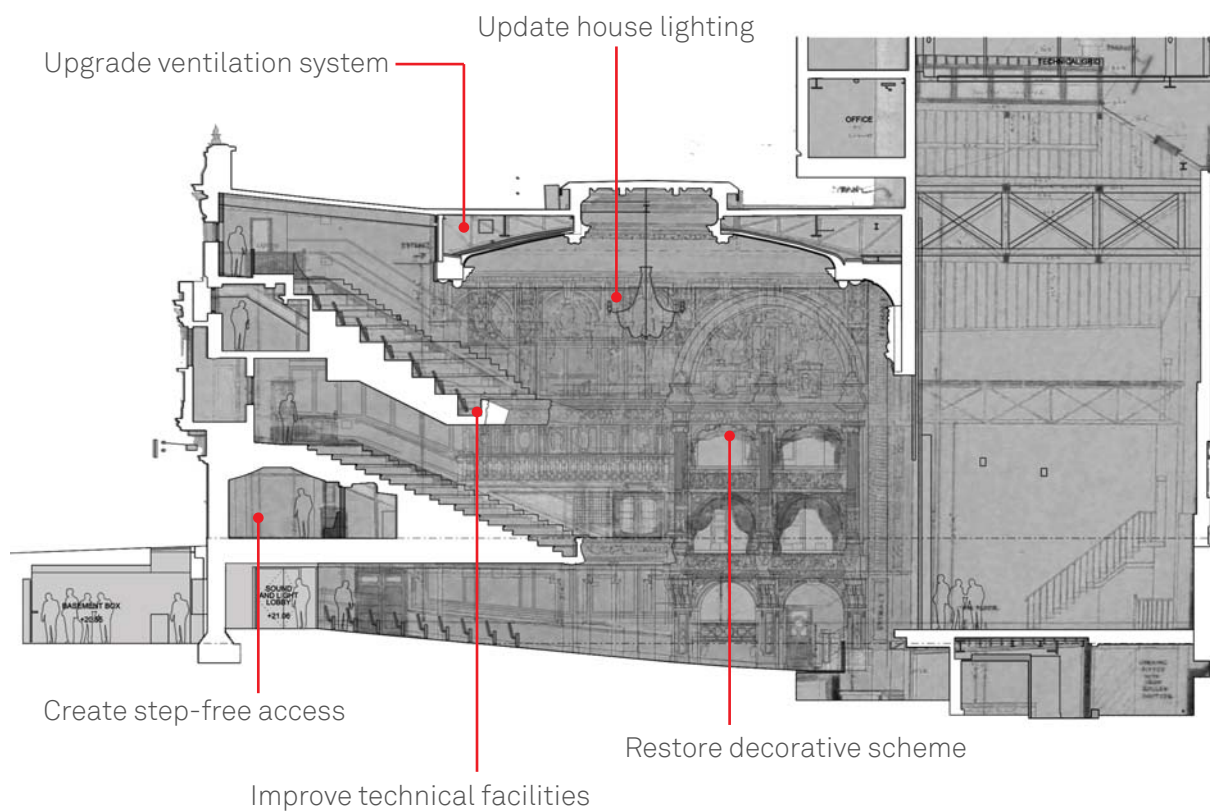
## Auditorium

The upgrading of the auditorium will address many current issues concerning ventilation, access, seating, technical facilities and decorative finishes, with the ultimate aim of restoring the grandeur and character of the original Edwardian design.

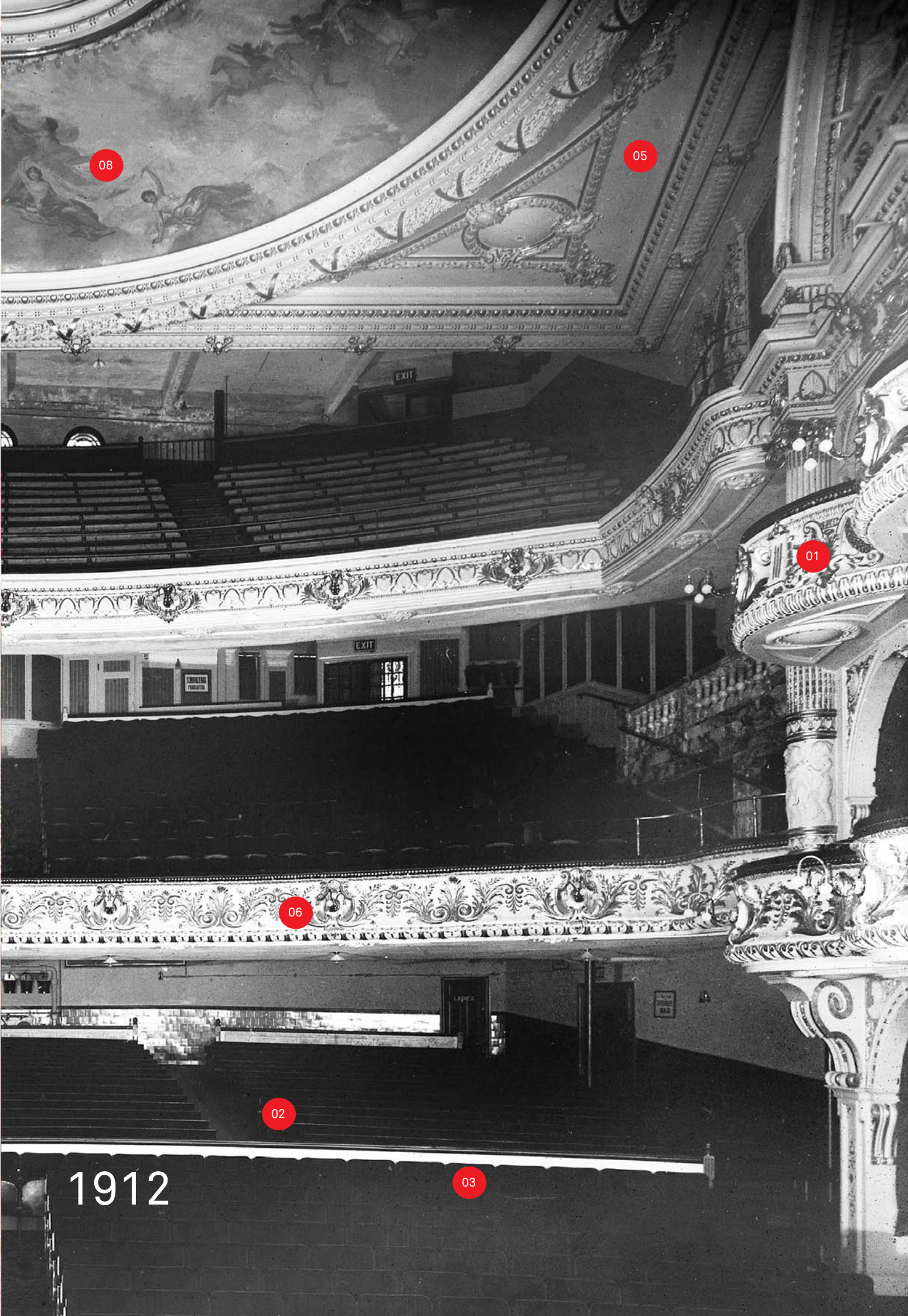
Murals that once adorned the ceiling will be reinstated, decorative plasterwork repaired and repainted, and soft furnishings replaced. A complete re-seating of the auditorium will allow the theatre to increase the number of wheelchair positions in the auditorium to 14 (or 1% of the total audience capacity). Seat design will be based upon the original 1911 design, with increased levels of comfort and improved sight lines.

An additional entrance point at the back of the stalls connecting to a new acoustically isolated cross-over corridor will improve audience circulation and help mediate the level changes between the auditorium and the new basement foyer. The corner tower spaces at the back of the Royal and Grand Circles will be opened up into spaces that the audience can use during intervals.

A new ventilation system will improve audience comfort levels significantly.







1912

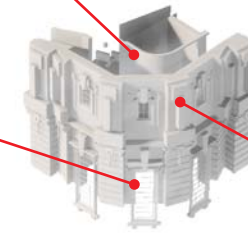
Store and plant rooms replanned to open up the corner tower internally

Cupola



Theatre signage removed to uncover original terracotta facade and windows

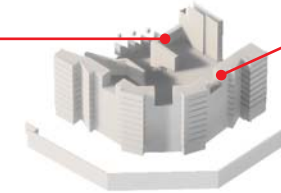
Grand circle



Drinks ledges and internal blackout blinds added

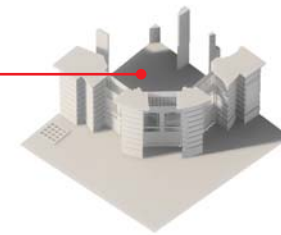
Audio description box removed and balcony reinstated as per original design

Royal circle



Original room properties reinstated

Ground floor foyer



—Opening up the corner tower

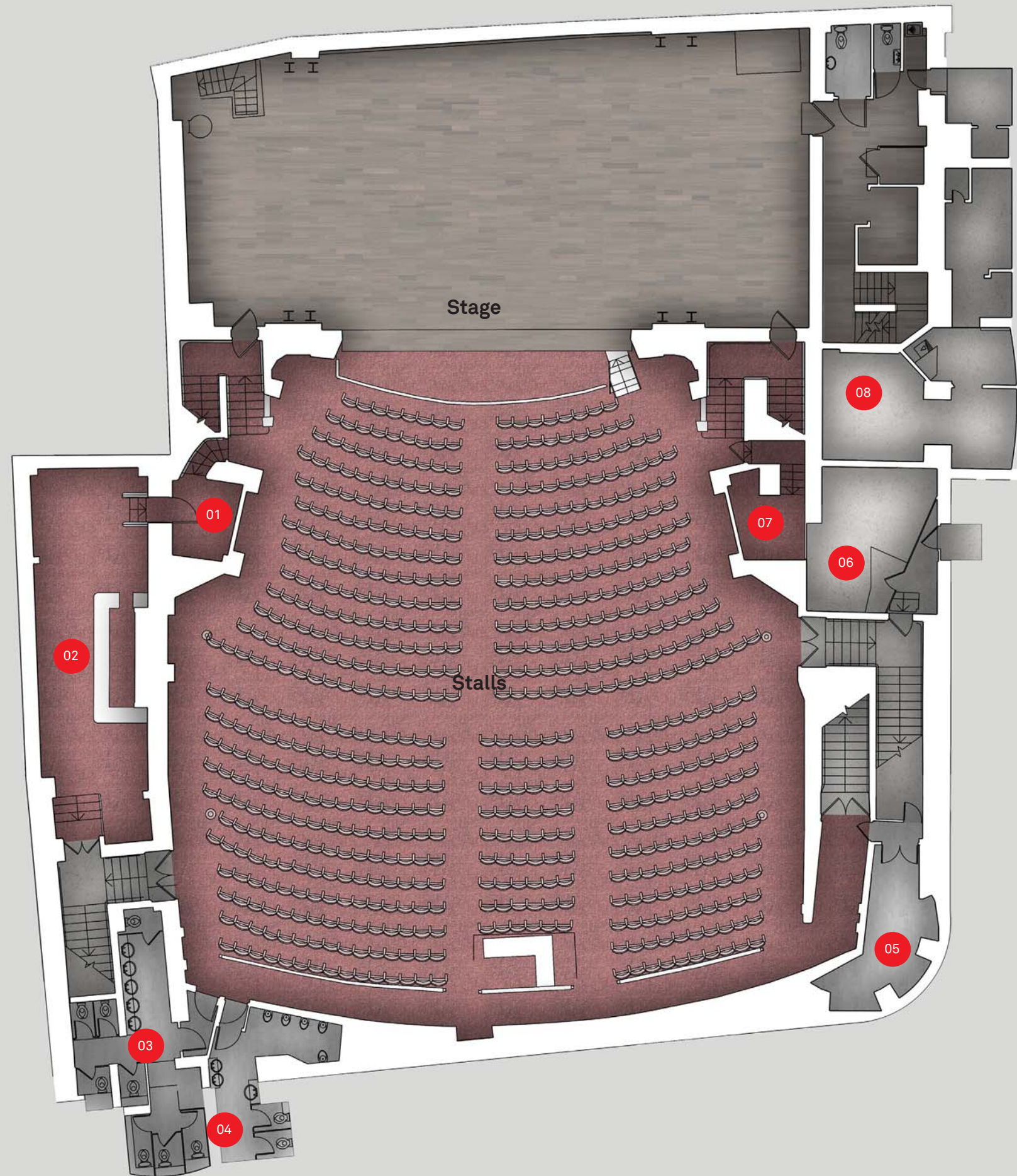
- 01. Relight with combined LED system
- 02. Reseat to stagger sightlines, remove aisles
- 03. Create DDA seat positions
- 04. Improved air supply & extract
- 05. Fibrous plaster repairs to ceilings, boxes and proscenium
- 06. Repair balcony fronts to remove boxing, improve lighting bars
- 07. Redecorate walls
- 08. Restore murals to walls and ceilings
- 09. Upgrade carpet
- 10. Technical improvements to show routing, sound booth



## 4.7 Plans

### Existing Plan - Basement

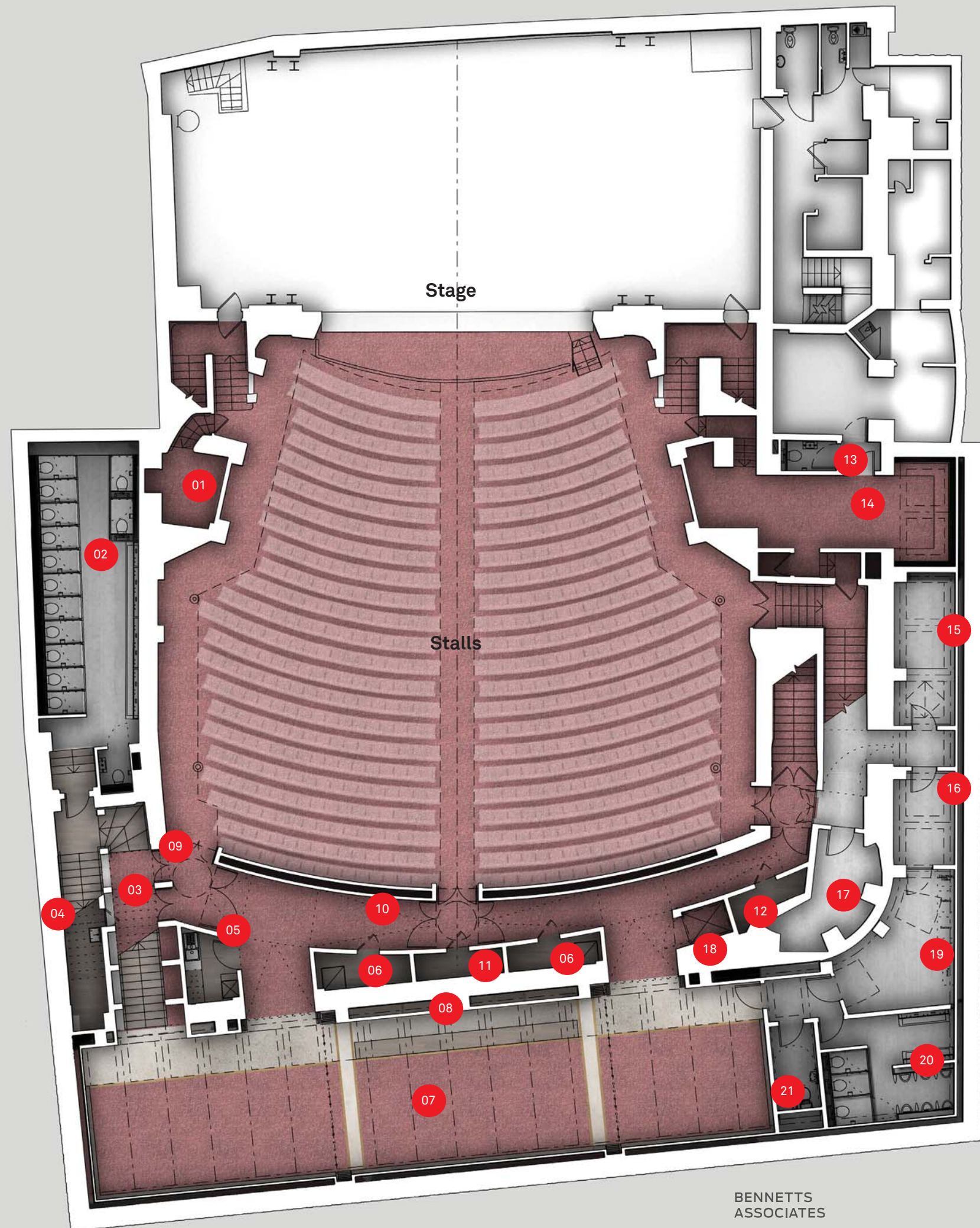
- 01. 'Snug'
- 02. Stalls bar
- 03. Female WC
- 04. Male WC
- 05. Electrical plant/ store
- 06. Plenum room
- 07. Maintenance store
- 08. Boiler room





## Proposed Plan - Basement

- 01. Maintenance store
- 02. Female WC
- 03. Grand Stair
- 04. Cleaner's cupboard
- 05. Food preparation area
- 06. Seat store
- 07. Bar seating / function area
- 08. New stalls bar
- 09. Sound and light lobbies
- 10. Crossover corridor
- 11. Bar furniture store
- 12. Lamp store
- 13. Unisex WC
- 14. Hospitality suite
- 15. Drinks store
- 16. Store
- 17. Ice-cream and ice store
- 18. Accessible platform lift
- 19. Maintenance Office and Electrical Plant
- 20. Male WC
- 21. Accessible WC





GRAPE STREET

KING EDWARDS MANSIONS

Existing Plan - Ground Floor

- 01. Female WCs
- 02. Circle bar
- 03. Foyer bar
- 04. Box office
- 05. Ice-cream / ice store
- 06. Cupola entrance
- 07. Accessible WC
- 08. Ladder access to boiler room

SOVEREIGN HOUSE

TAXI RANK

HIGH HOLBORN

Royal circle (Lower)

PRINCES CIRCUS

01

02

01

05

03

04

06

07

08





GRAPE STREET

KING EDWARDS MANSIONS

Proposed Plan - Ground Floor

- 01. Circle bar
- 02. Accessible WC
- 03. Box office
- 04. Grand stair
- 05. New entrance and foyer
- 06. Lozenge Foyer
- 07. Outdoor seating
- 08. Accessible platform lift
- 09. Cupola entrance
- 10. Merchandise or retail
- 11. Male WC
- 12. Cleaner's cupboard

SOVEREIGN HOUSE

LOADING BAY

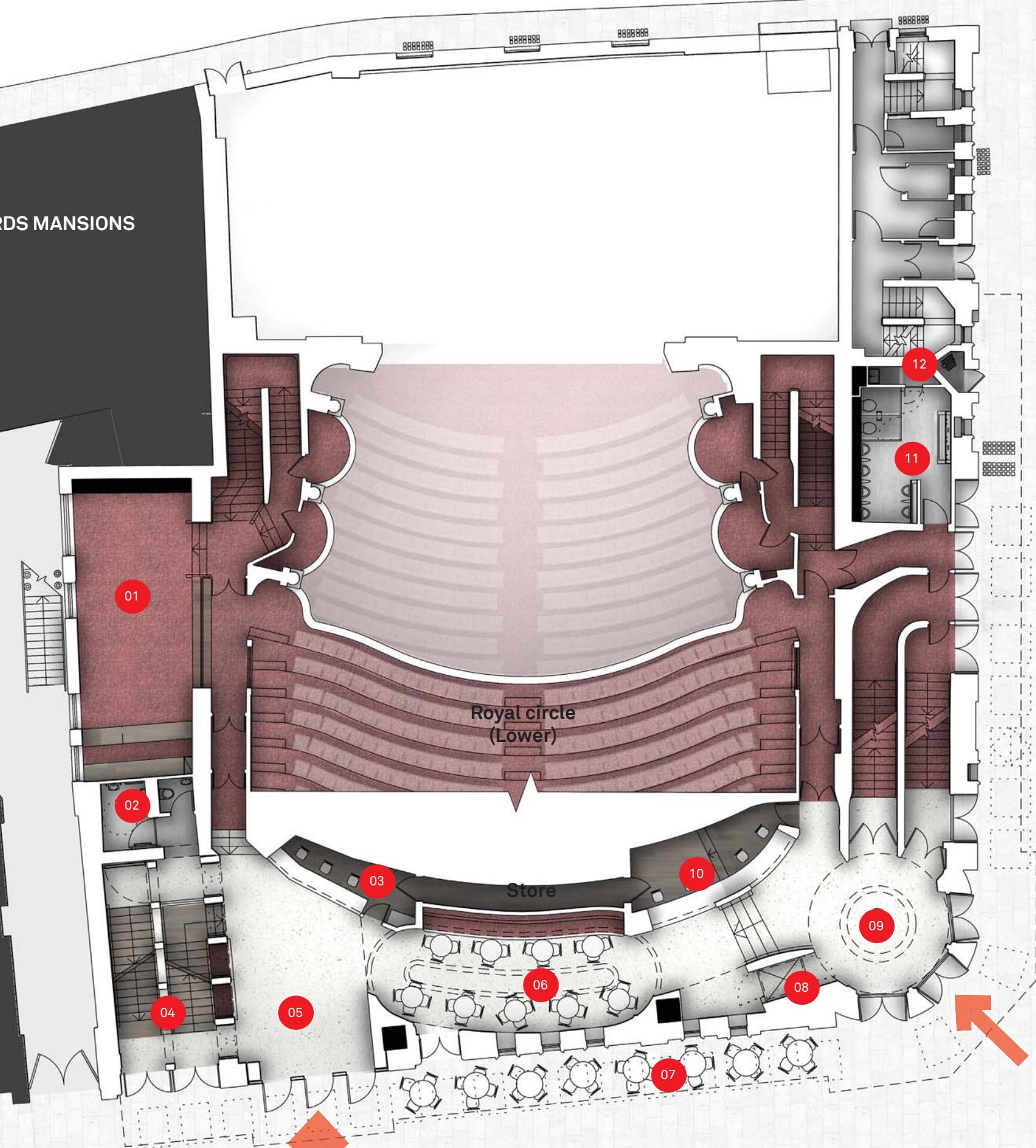
HIGH HOLBORN

Royal circle  
(Lower)

Store

PRINCES CIRCUS

SHAFTESBURY AVENUE



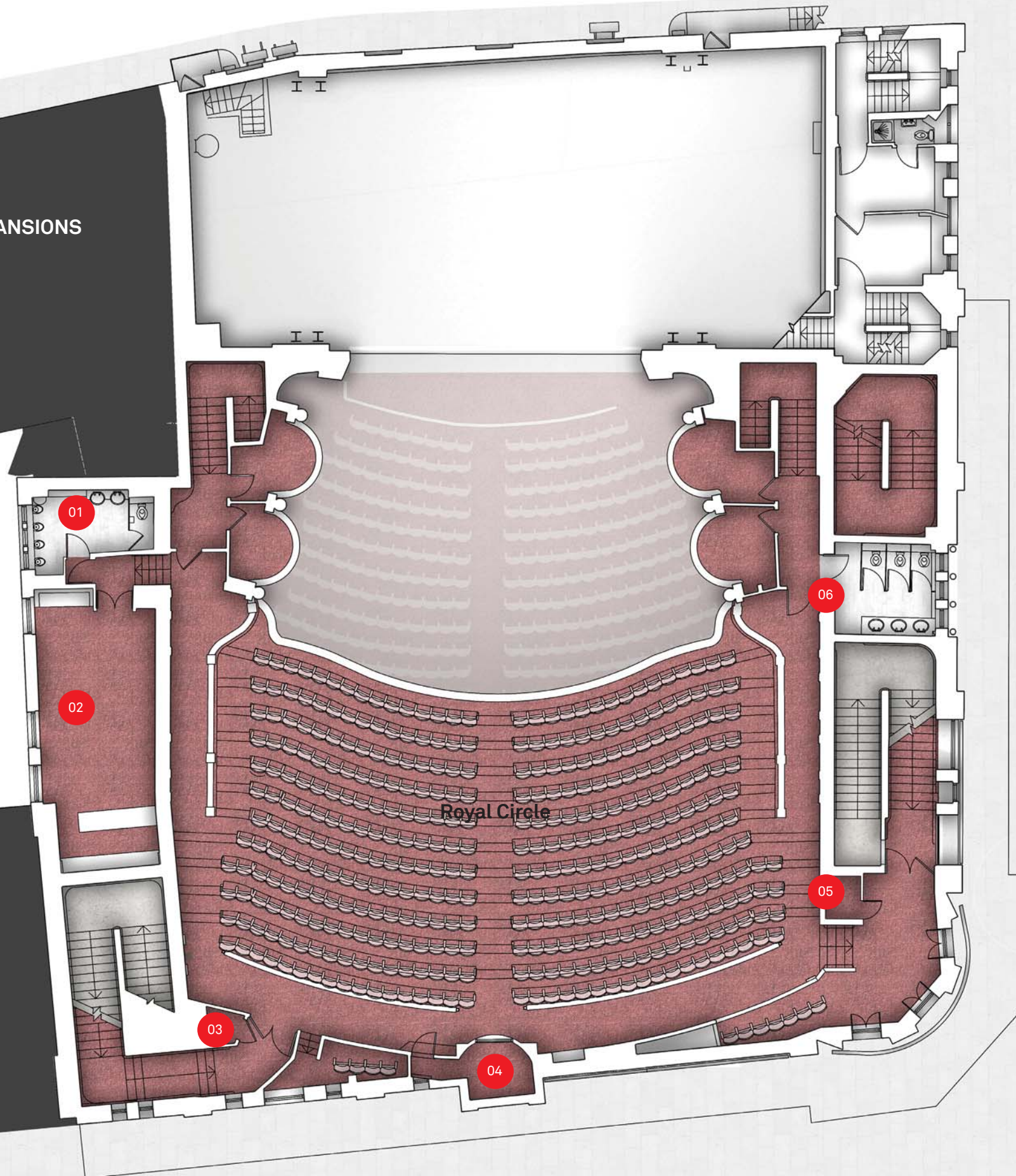


KING EDWARDS MANSIONS

Existing Plan - First Floor

- 01. Male WCs
- 02. Royal bar
- 03. Store
- 04. Lighting box
- 05. Avoid description booth
- 06. Female WC

SOVEREIGN HOUSE



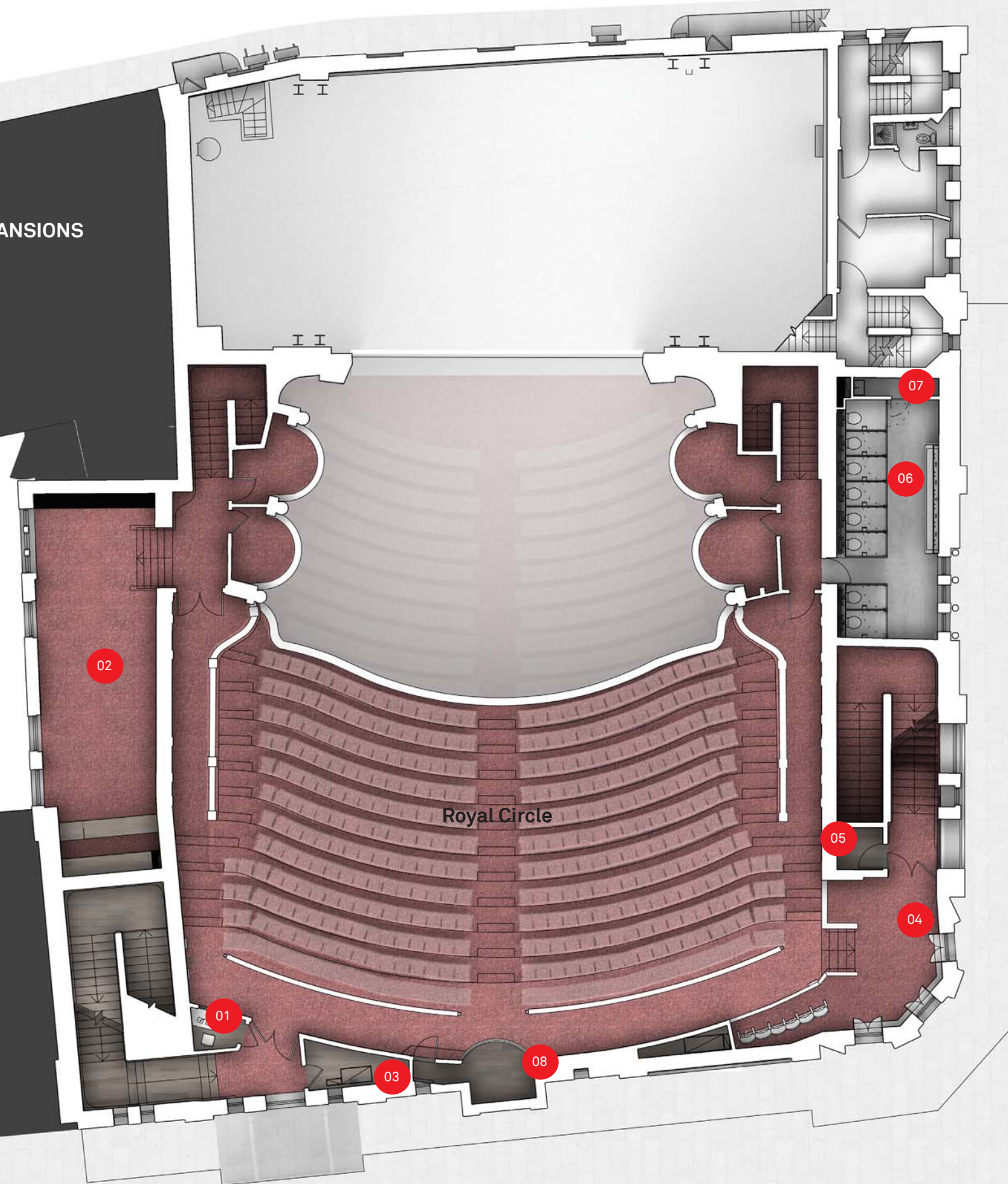


KING EDWARDS MANSIONS

Proposed Plan - First Floor

- 01. Directors box
- 02. Royal bar
- 03. Store
- 04. Royal tower
- 05. Store
- 06. Female WC
- 07. Cleaner's cupboard
- 08. Lighting box

SOVEREIGN HOUSE



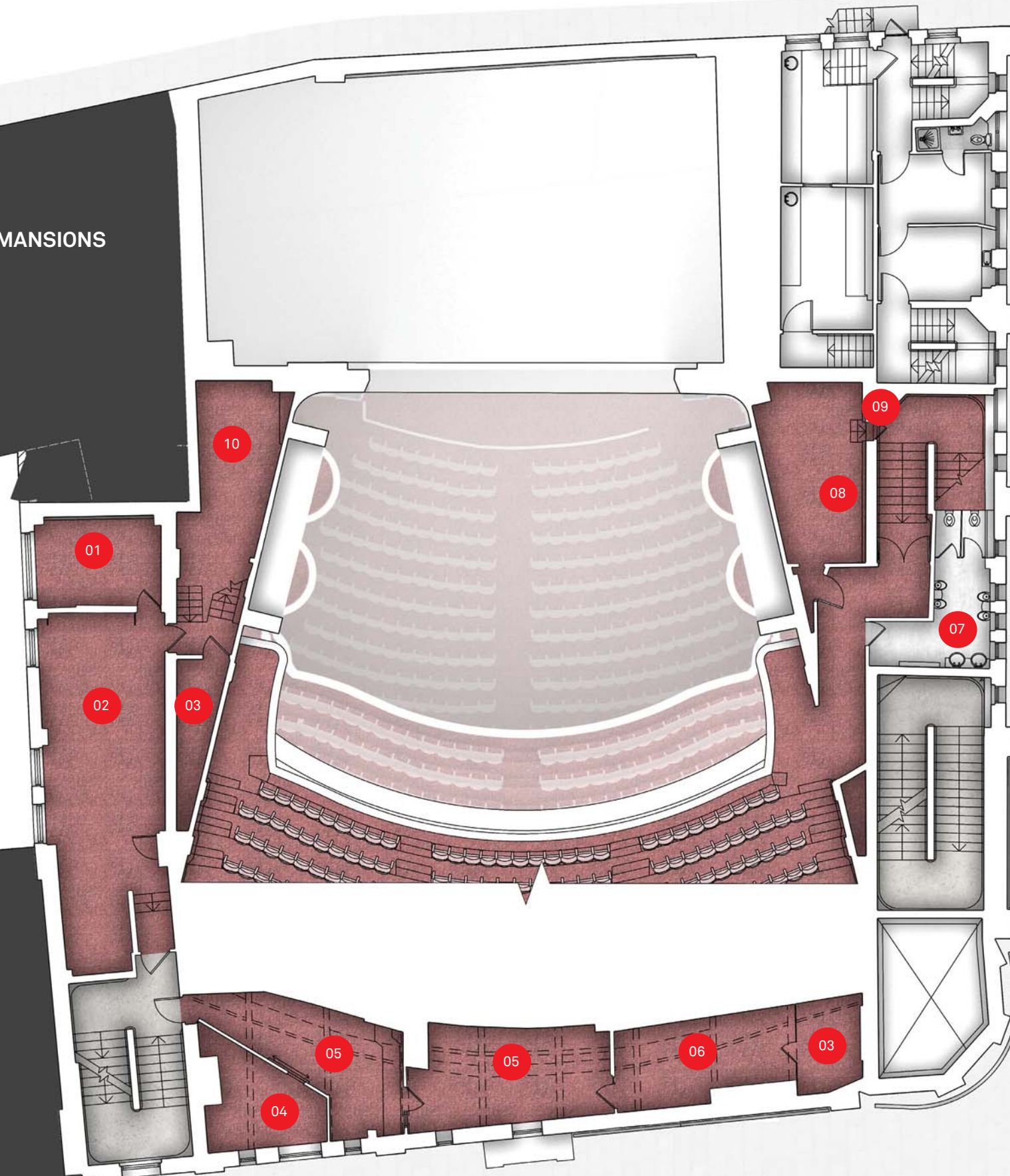


KING EDWARDS MANSIONS

Existing Plan - Second Floor

- 01. Theatre Manager's office
- 02. Grand bar
- 03. Store
- 04. Home Manager's office
- 05. Office
- 06. Electrical plant / store
- 07. Male WCs
- 08. FOH staff rest room
- 09. Maintenance office (above stair)
- 10. Phone room

SOVEREIGN HOUSE



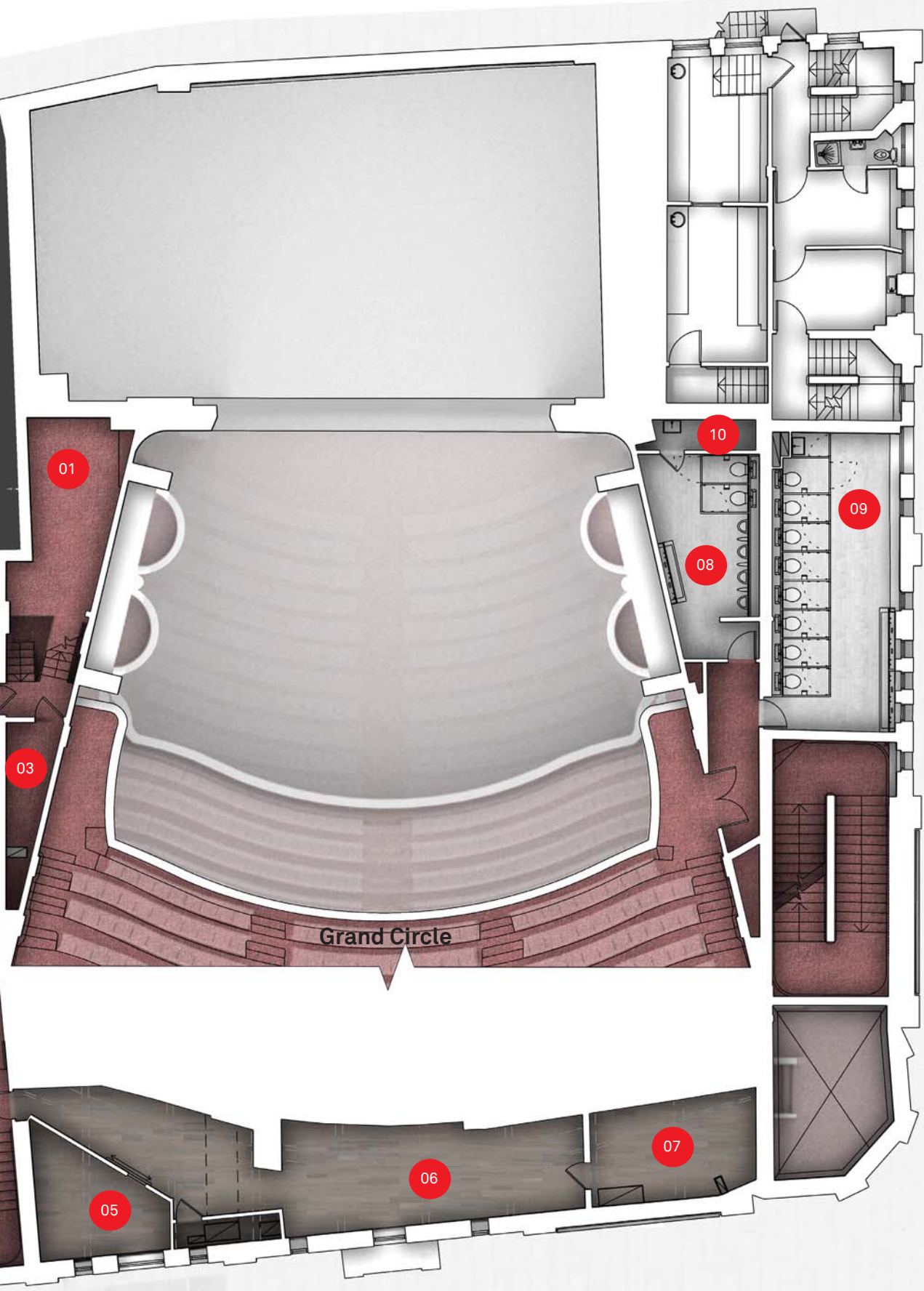


KING EDWARDS MANSIONS

Proposed Plan - Second Floor

- 01. Phone room
- 02. Theatre Managers Office
- 03. Store
- 04. Grand bar
- 05. House Managers Office
- 06. Front of House office
- 07. Cashing up room
- 08. Male WC
- 09. Female WC
- 10. Cleaner's cupboard

SOVEREIGN HOUSE



Grand Circle

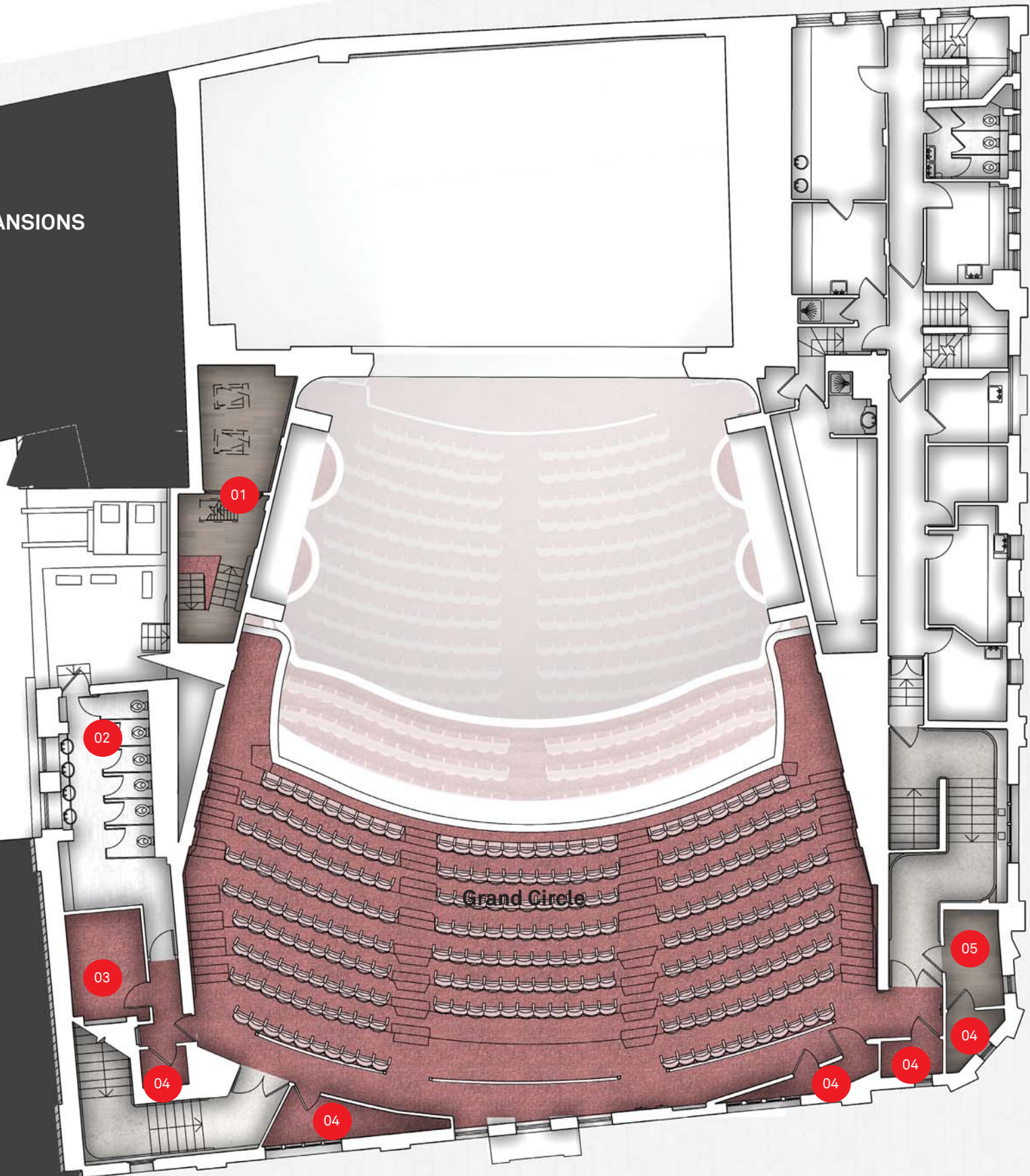


KING EDWARDS MANSIONS

Existing Plan - Third Floor

- 01. Box office manager's office
- 02. Front of house staff area
- 03. Male changing
- 04. Female changing
- 05. Uniform storage
- 06. Store
- 07. Seat store

SOVEREIGN HOUSE



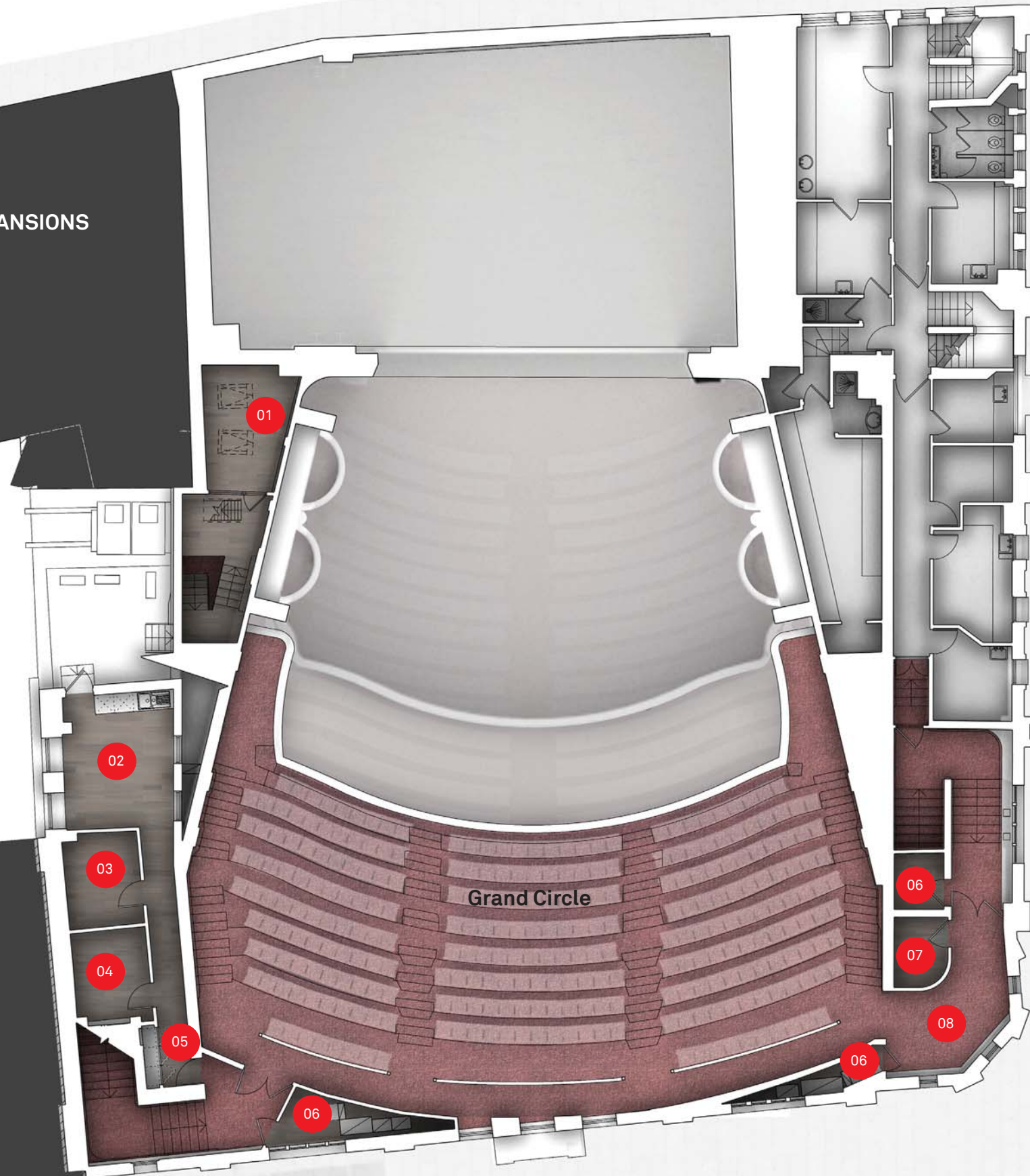


KING EDWARDS MANSIONS

Proposed Plan - Third Floor

- 01. Box office manager's office
- 02. Front of house staff area
- 03. Male changing
- 04. Female changing
- 05. Uniform storage
- 06. Store
- 07. Seat store
- 08. Grand Tower

SOVEREIGN HOUSE



Grand Circle



## 4.8 Materials and Character

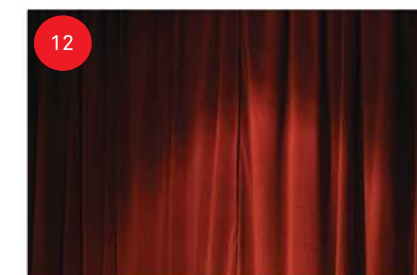
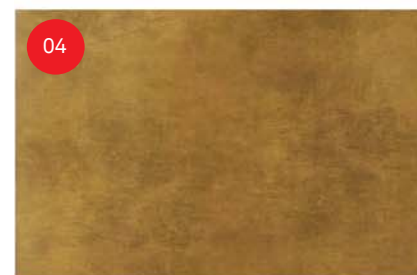
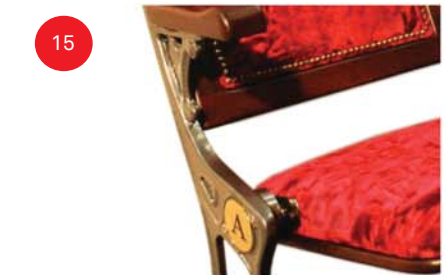
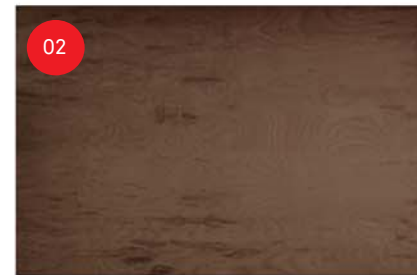
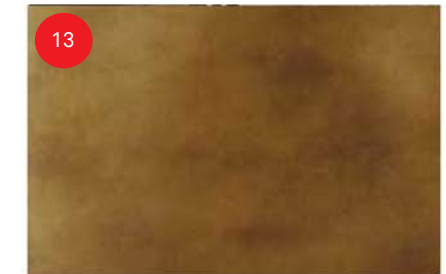
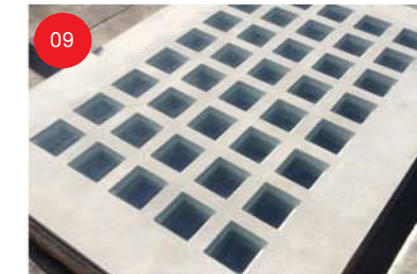
The following pages show the major areas of change and their proposed look and feel. A contemporary yet restrained palette of materials has been selected to complement the proposed and the retained building elements. These materials reflect the activities and atmosphere of the varying spaces within The Shaftesbury Theatre.

### New Material

- 01. In-situ board marked concrete
- 02. Dark timber panelling
- 03. Light terrazzo floor
- 04. Painted brass counter tops, handrails and inlays
- 05. Dark anodised aluminium or steel
- 06. Precast concrete vaults
- 07. Broadloom carpet
- 08. Precast concrete stair
- 09. Glass pavement lights

### Existing Material

- 10. Decorative plaster repaired and reconstructed
- 11. Existing terracotta faience
- 12. Existing drapes and curtains replaced
- 13. Existing brass fittings
- 14. Existing Brinton's patterned carpet
- 15. Auditorium seating replaced







10

11

08

03

04

★★★★★  
MOTOWN  
THE MUSICAL  
THE SONGS. THE SOUND. THE STORY.