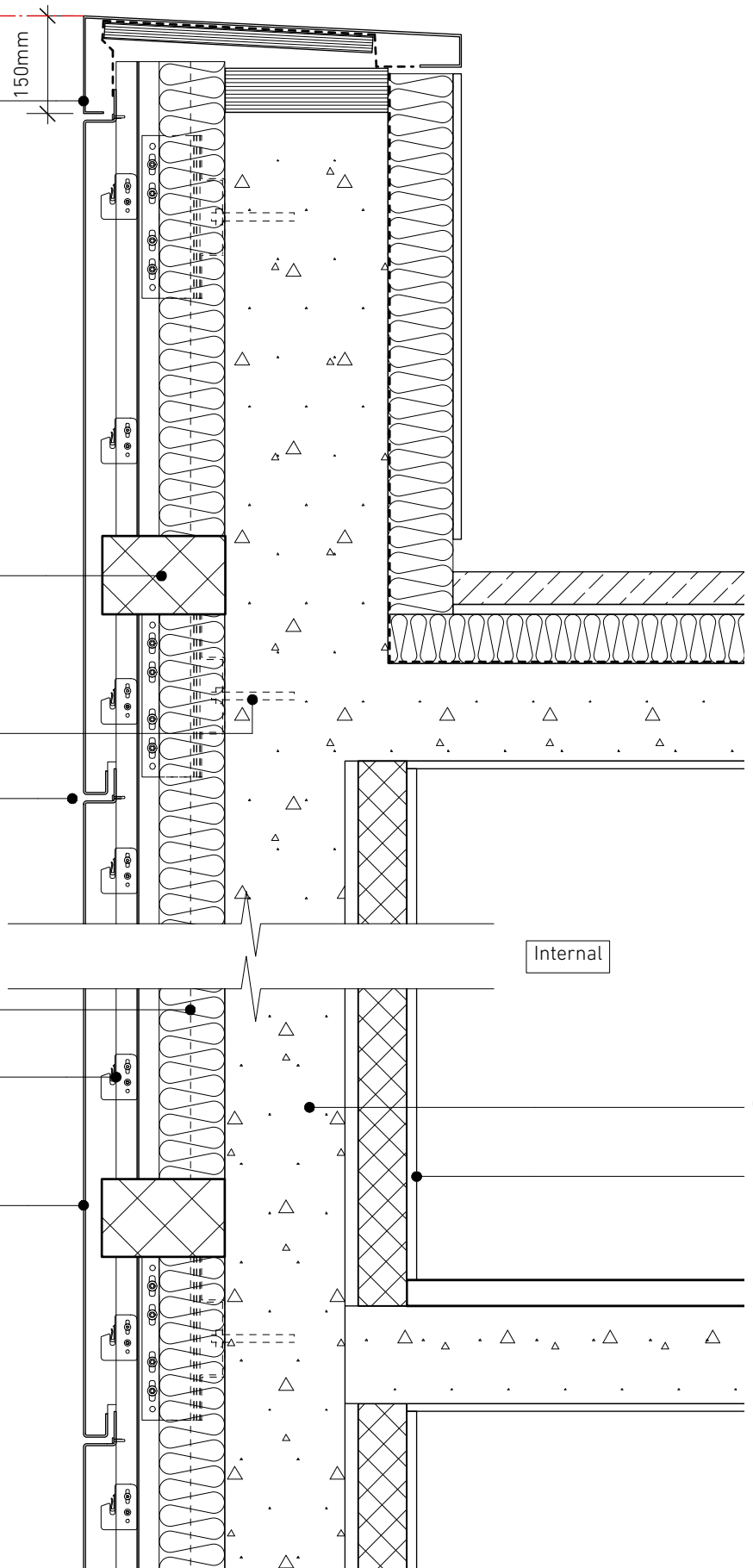


HEIGHT OF EXISTING PARAPET



New solid aluminium PPC capping to min A2 fire rating to match depth of existing capping

150mm

New horizontal fire cavity barrier

Exiting anchor bolt

10mm Panel joint

External

Internal

New insulation lining to min A2 fire rating

New aluminium cladding framework to min A2 fire rating

Proposed solid aluminium cladding panels to min A2 fire rating powder coated to RAL9002 in a matt finish (30% gloss)

Original 60's structural concrete facade

Existing internal lining

1 Cladding Parapet Section - 4 Towers

1:10 @ A3

0 0.5m 1m

NEIL DAVIES ARCHITECTS

ALL INFORMATION REMAINS THE PROPERTY OF THE ARCHITECT AND MAY NOT BE USED FOR ANY PURPOSE WHATSOEVER, OR REPRODUCED THROUGH ANY MEDIUM WITHOUT THE WRITTEN PERMISSION OF THE ARCHITECT. NO RESPONSIBILITY ACCEPTED FOR UNAUTHORISED USE.

4 The Glasshouse 49A Goldhawk Road London W12 8QP T: +44(0)20 8743 4401 E: info@neildaviesarchitects.com

NOTES

IN COLLABORATION WITH

Eckersley O'Callaghan

A Issued for planning 26/01/18

PLANNING

PROJECT	CHALCOTS ESTATE
TITLE	4Towers Cladding Par. Sect.
JOB NO	114
SCALE	1:10 @ A3
DATE	22/12/17
DRAWN BY	SN
CHECKED BY	ND
DWG NO	321
REVISION	A