

**Notes**

Do not scale from this drawing. Any discrepancies are to be reported to the architect immediately. All dimensions will be taken on site prior to ordering and construction.

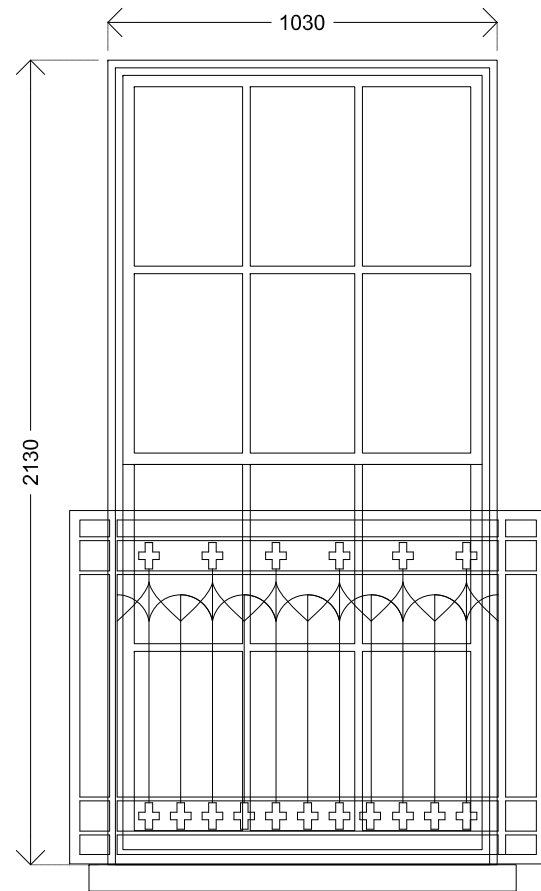
Copyright remains with the architect. This drawing is to be read in conjunction with the notes specification and all other relevant information. No disclosure or copies may be made without prior written permission.

**Secondary Sash Window Specification**

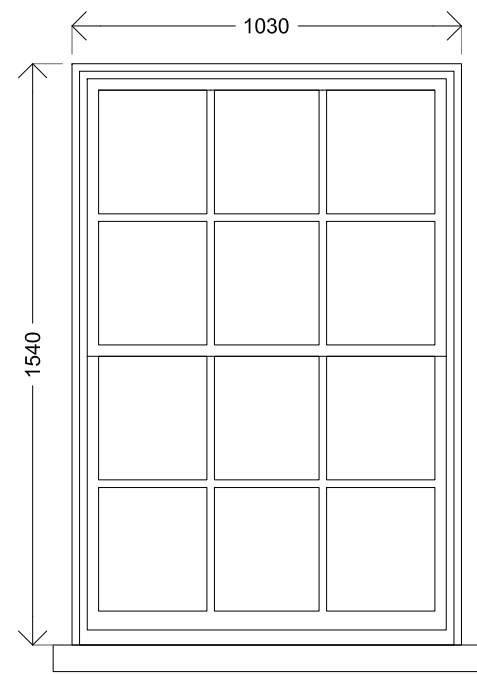
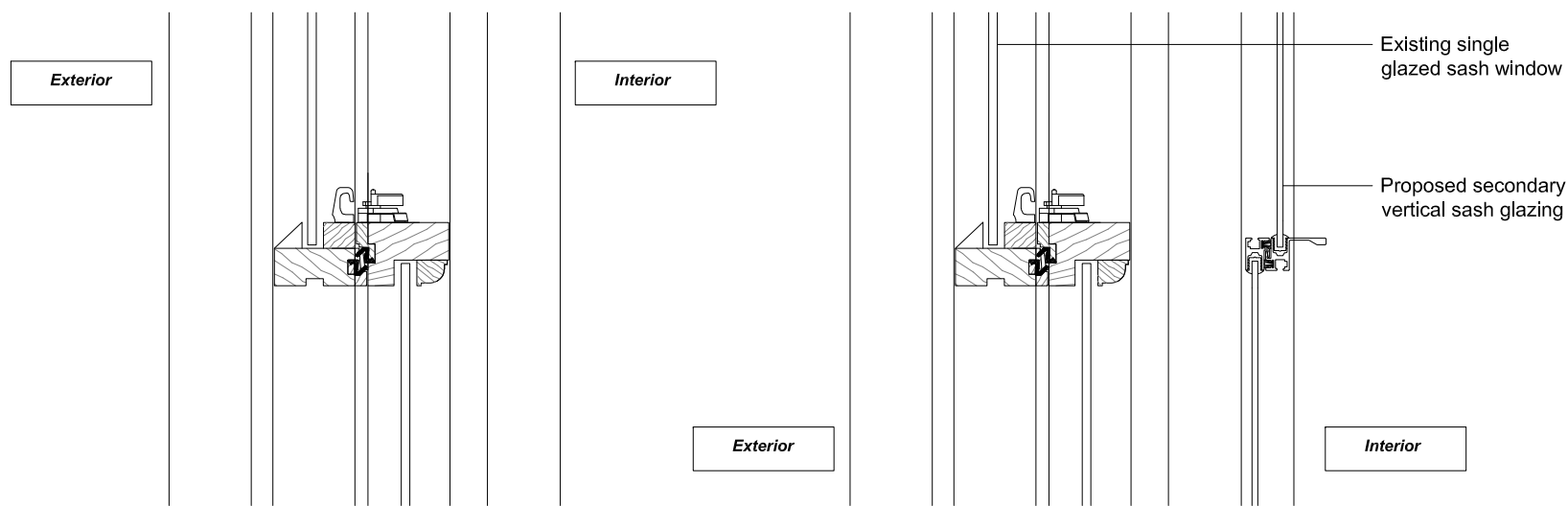
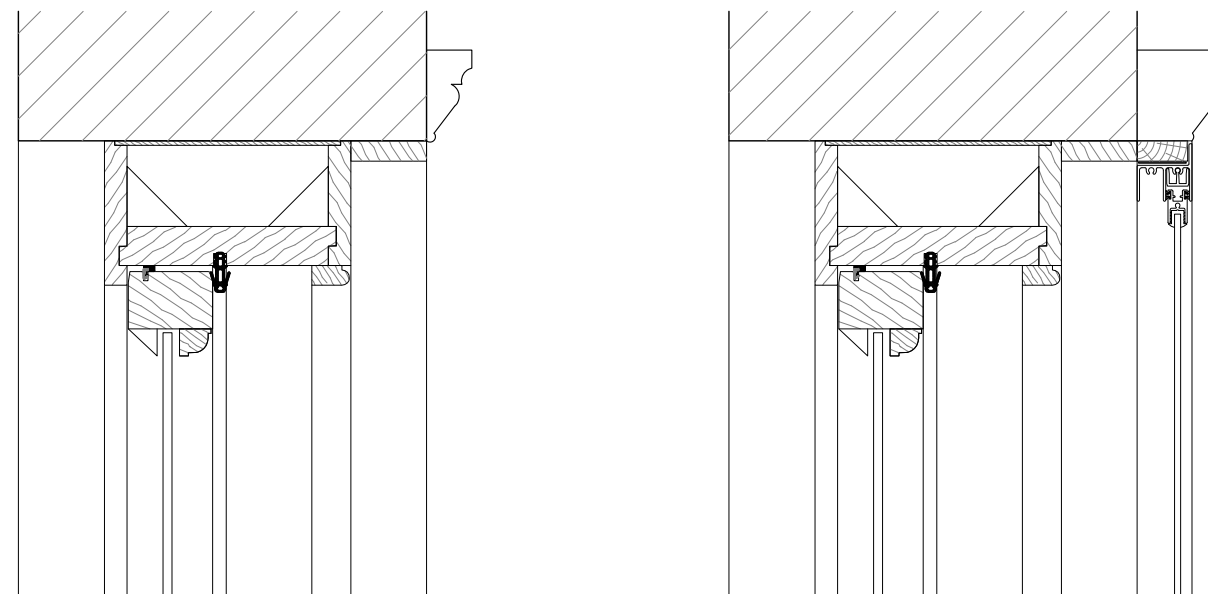
**Supplier.** Selectaglaze  
**Range.** Series 20 Slimline  
**Dimensions.** FF W01 + FF W02  
 1030W x 2130H  
 SF W01 + SF W02  
 1030W x 1540H  
**Glazing.** 4mm single glazing  
**Window Frames.** Aluminium alloy  
**Finish.** Standard white (HIPCA semi-gloss)

**Notes**

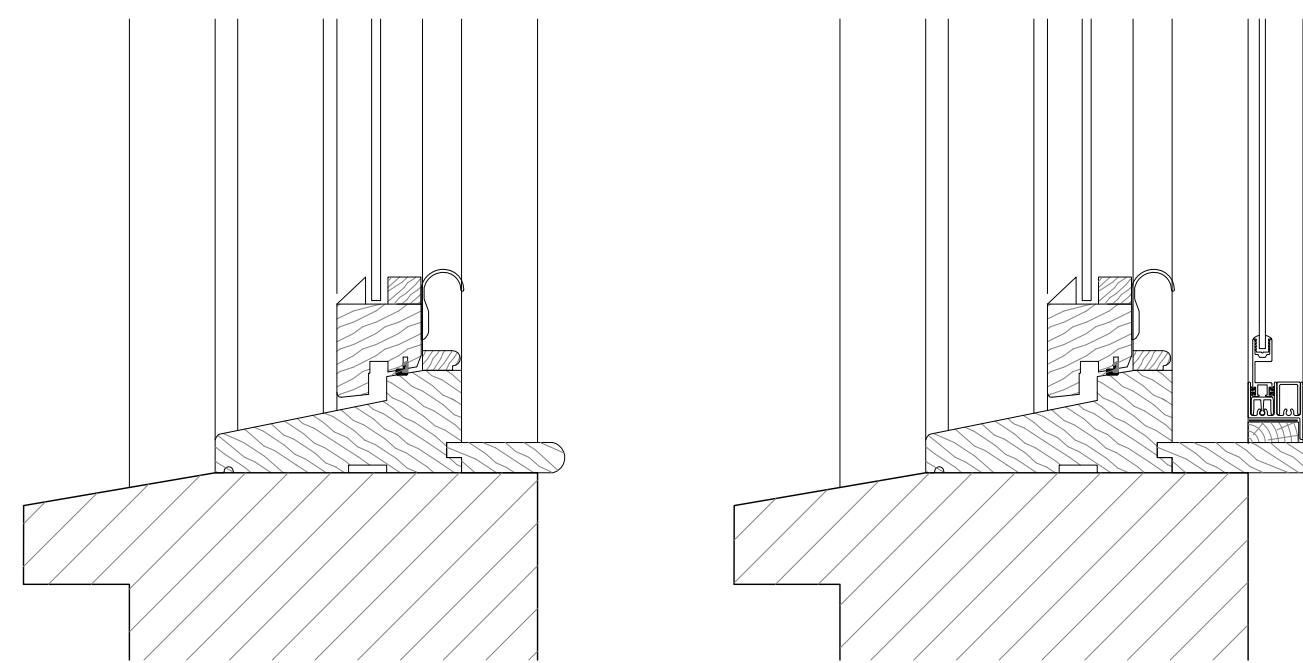
All dimensions to be site measured and fabrication drawings approved prior to fabrication. Any discrepancies must be raised asap.



**Existing Window FF W01 + FF W02**  
**External Elevation**  
Scale 1:20



**Proposed Window SF W01 + SF W02**  
**External Elevation**  
Scale 1:20



**Existing Sash Window Section**  
Single glazed timber sash window  
Scale 1:5

**Proposed Sash Window Section**  
Single glazed timber sash window  
with secondary vertical sash glazing  
Scale 1:5



**Architecture | Interiors**  
 Studio 5. The Hothouse.  
 274 Richmond Road,  
 London E8 3QW  
 0207 254 7214  
 dedraft.co.uk  
 @dedraftlondon

**Planning Issue**

Project 369  
 133 Arlington Road. NW1 7ET  
 Grant Parkinson & Masha Feigelman

Drawing No. A720  
**Window Details -**  
**FF W01, FF W02, SF W01, SF W02**  
 Scale various at A3  
 Drawn 30.08.17  
 Stephanie Choi

**Revisions**

- - -