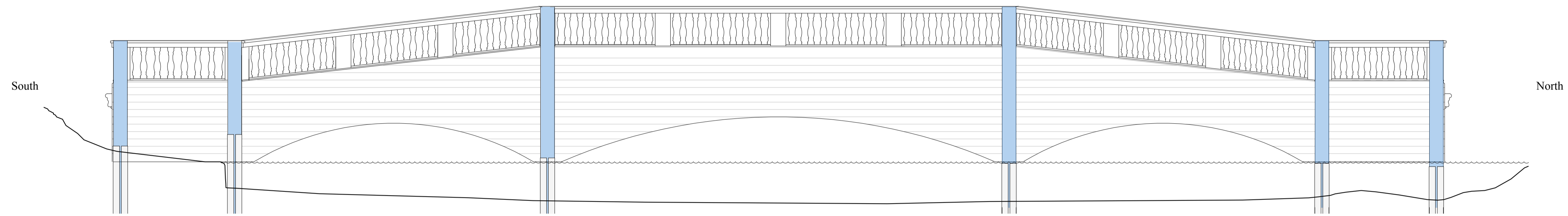
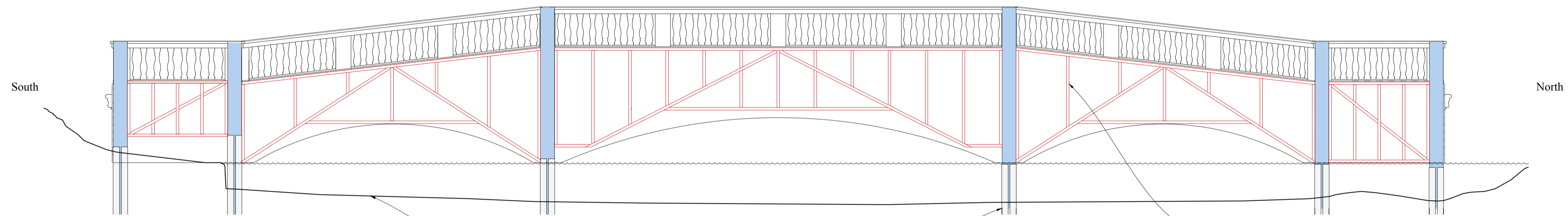


Note: Dimensions are approximate, for guidance.  
Precise measurements and setting-out are to be taken and established on site.



**EAST ELEVATION AS EXISTING**  
Showing plain weatherboarding between the 6 no. main support posts.  
(Boarding and balustrade/ parapet weatherings are badly decayed).



**EAST ELEVATION AS EXISTING**  
cutaway to show internal timber frame.  
(Frame timbers and joints are badly decayed).

Approximate depth and profile of lake bed.

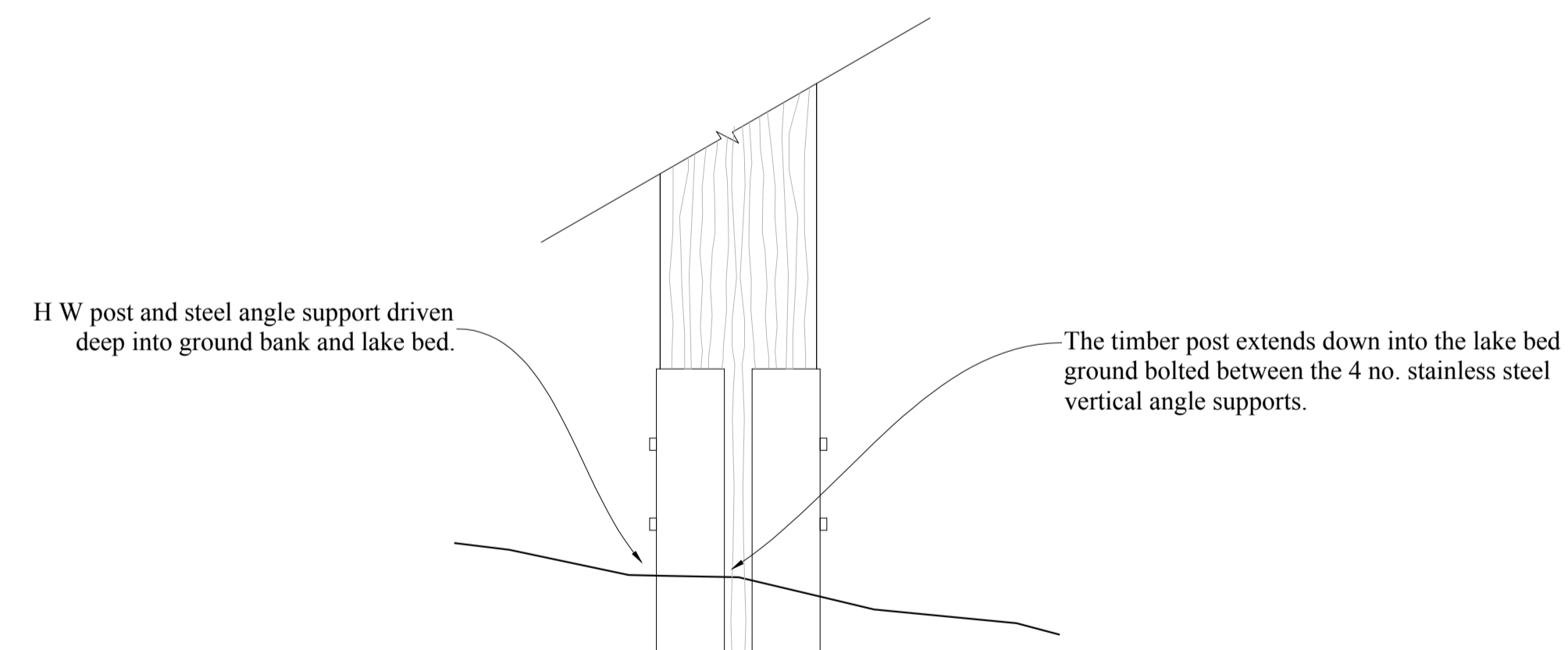
Stainless steel vertical angle supports  
bolted through timber posts.

Approximate form of the internal timber frame.

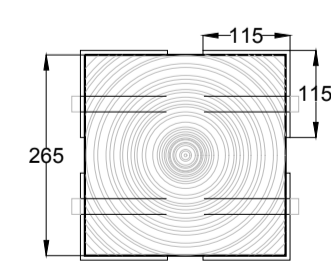
East Elevation (cutaway) showing existing timber posts and stainless steel vertical angle supports. The angles at different heights relative to the water level (possibly due to the differing level of the ground and lake bed, if the angles are driven into the ground to similar depth). Drawing also shows approx. layout of internal timber frame.

Note: The stainless steel angle supports are at different levels.

Note: The 6 no. support posts are badly decayed at their tops and sides.



**ELEVATION OF SUPPORT POST & ANGLES**  
Scale 1:10



**PLAN OF SUPPORT POST & ANGLES**  
Scale 1:10

- 03/11/2017 Issued to Client (EH) & Structural Engineer (HE)  
Revision Date Comments  
**DO NOT SCALE FROM THIS DRAWING**

**DRAFT**

Kenwood House, Hampstead, NW3  
RECONSTRUCTION OF SHAM BRIDGE  
SURVEY  
Rear (East) Elevation  
Showing Support Posts, Base Angles  
& Internal Timber Framing

**CARDEN & GODFREY** Architects  
Carden & Godfrey Limited  
33 Clerkenwell Close  
London EC1R 0AU  
Telephone: 020 7490 0300  
Facsimile: 020 7490 0004  
mail@cardenandgodfrey.co.uk

Scale	Size	Date	Drawn	No.	Rev.
1:50	A1	Oct. 2017	DK	5166.10.02	

© Carden & Godfrey Ltd own the copyright of this drawing and design which must not be reproduced in whole or part without the written permission of Carden & Godfrey Ltd