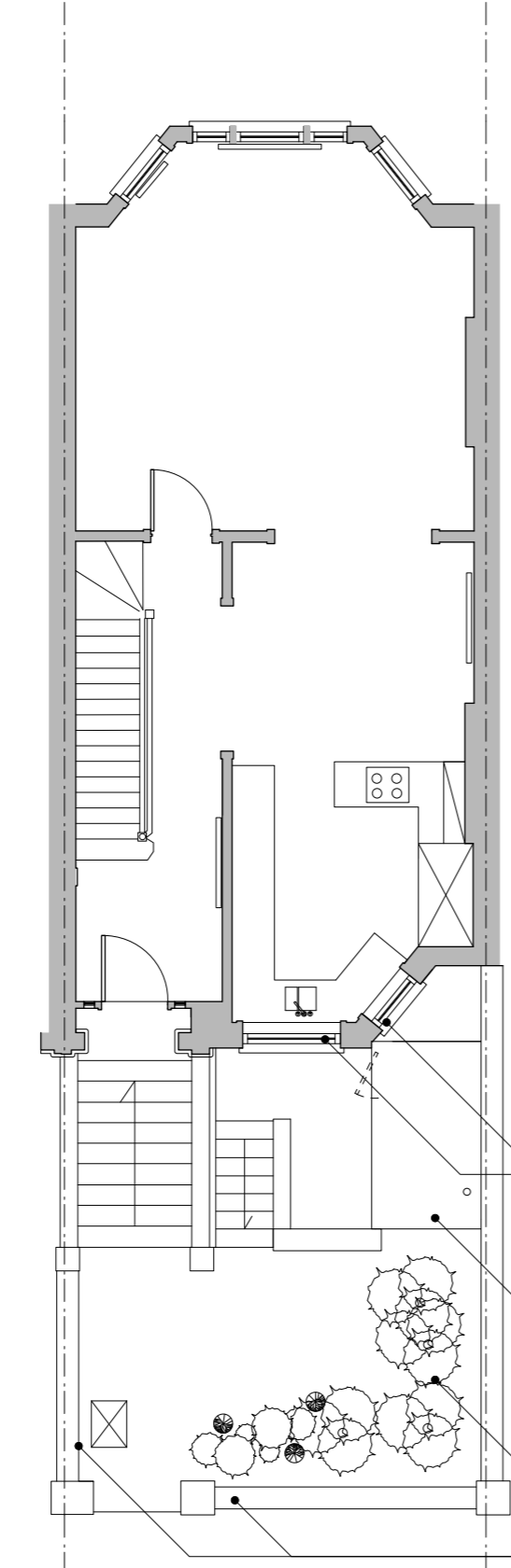


BASEMENT FLOOR PLAN



GROUND FLOOR PLAN

render removed from around porch and restored to brick - to match neighbouring house

local masonry repairs to façade

new timber-framed double-glazed casement windows on existing frame reveal line, fenestration pattern restored to original and to match neighbouring house, stained glass retained and re-used in situ (all other windows and doors unaltered)

local masonry repairs to façade



FRONT ELEVATION



REAR ELEVATION

new timber-framed double glazed casement windows on existing frame reveal line, fenestration pattern restored to original and to match neighbouring house, stained glass retained and re-used in situ

new timber-framed double-glazed french doors

walls built-up to increase height of lightwell store, re-rendered and new flat roof

new boiler flue

new flat roof at 150mm below garden wall

new stone paving and steps

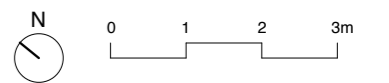
brick piers, boundary and pavement wall re-built on improved footings

Key

Notes

Revisions

A. 25.01.18 First Issue for planning



64 Fairhazel Gardens

Plans and Elevations
As Proposed

Scale 1:100 @ A3 25.01.2018

64FG-PL-20

Rev A

The
**Vawdrey
House**

© The Vawdrey House