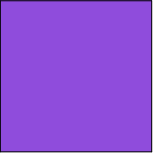

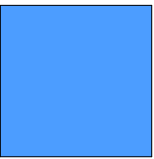
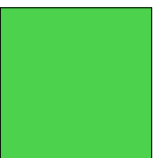
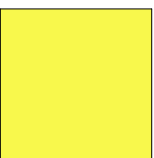
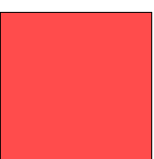

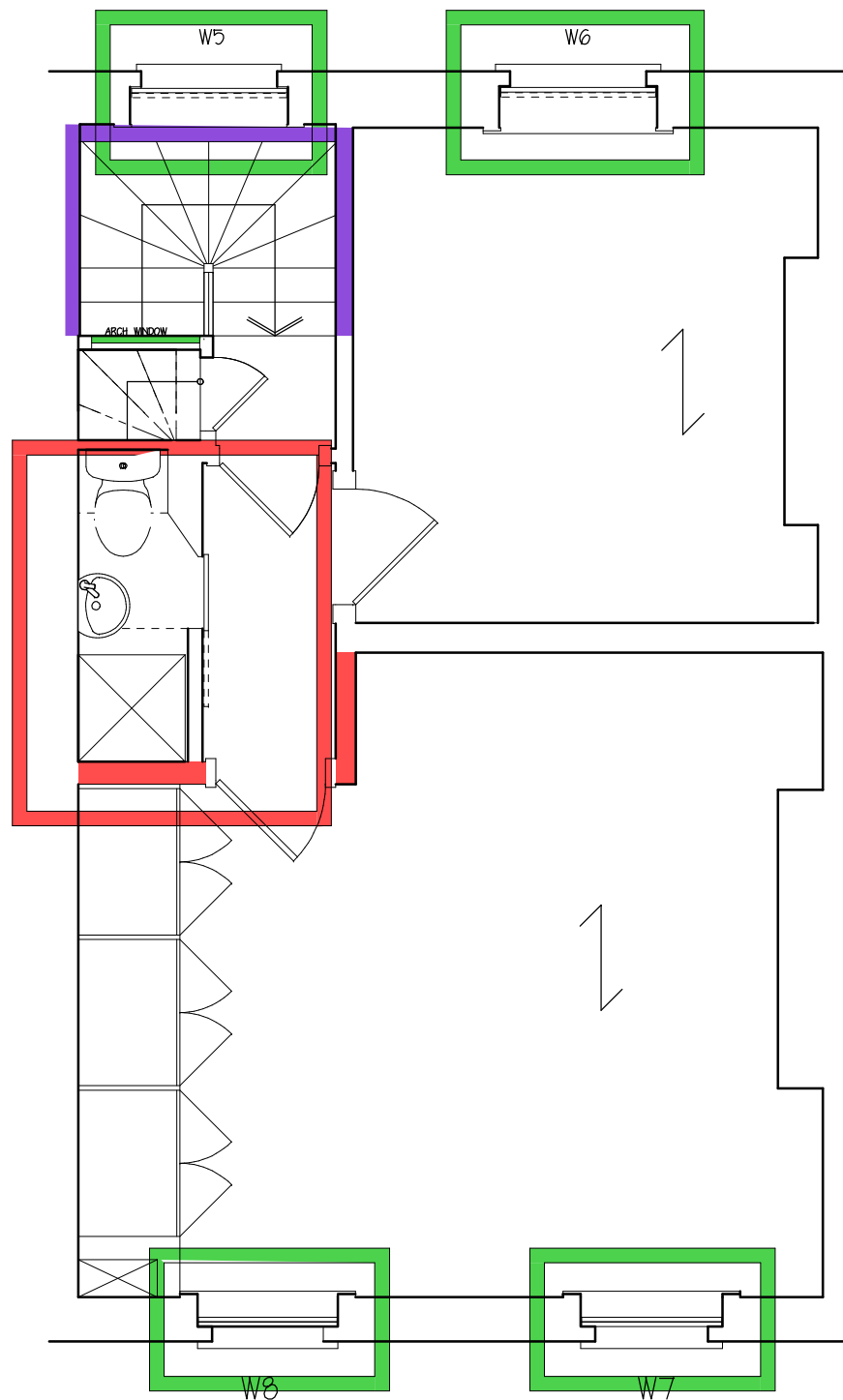


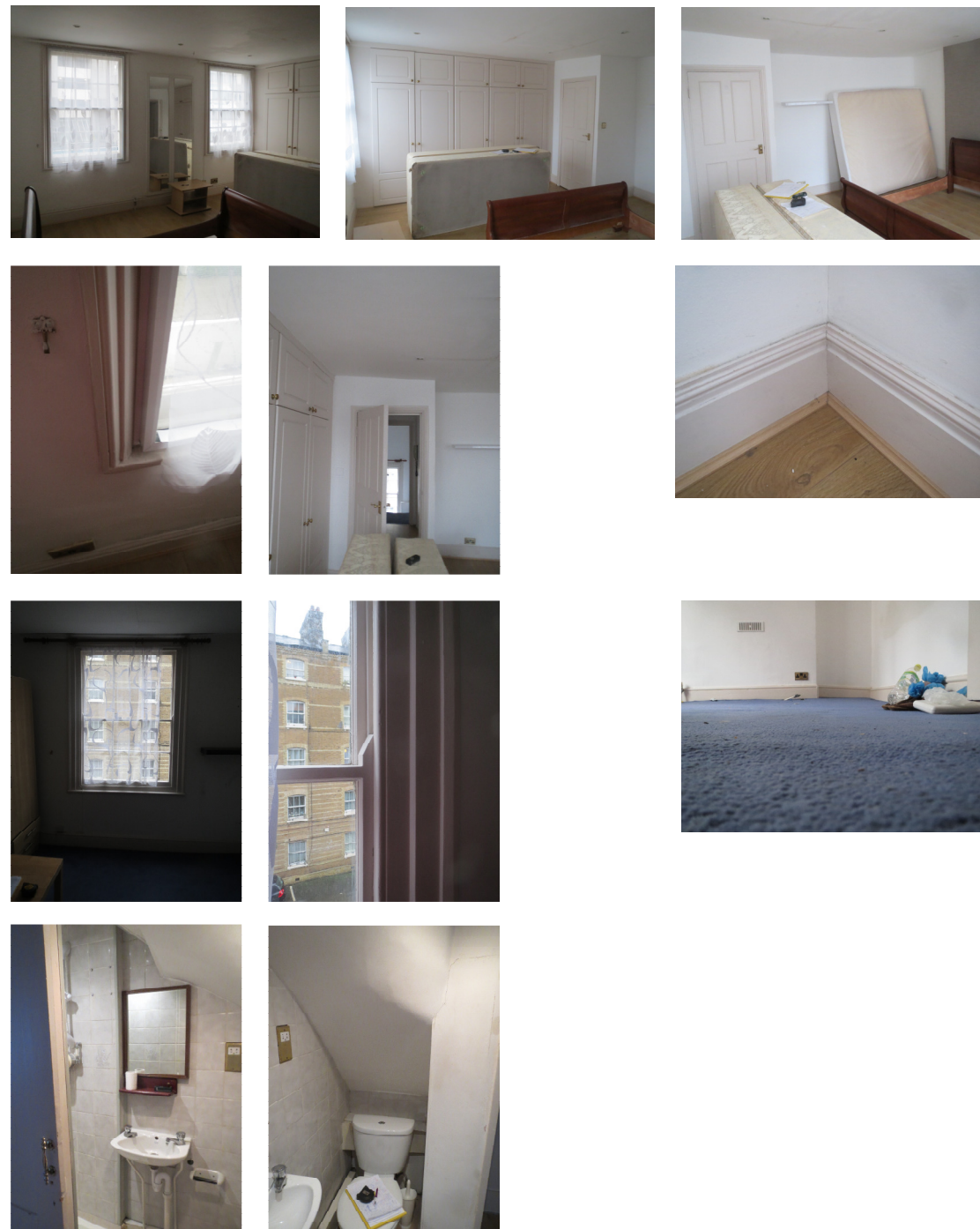
SUMMARY

HISTORIC LININGS (SKIRTINGS AND CORNICES) MISSING
 ALL FIREPLACE ELEMENTS AND MANTELS MISSING - FIREPLACES BLOCKED
 DOOR D6 ORIGINAL
 ARCH WINDOW OVER ATTIC STAIRS BLOCKED BUT POSS ORIGINAL FEATURE
 STAIRCASES ORIGINAL
 PLAN FORM (FRONT ROOM) COMPROMISED
 PLAN FORM (REAR ROOM) ORIGINAL
 DEFELECTION IN EVIDENCE - SEE CONDITION SURVEY
 OVERALL FEW HISTORIC ELEMENTS

 HIGHLY SIGNIFICANT
 HIGHLY SIGNIFICANT HARMED ELEMENT
 SIGNIFICANT
 SOME HISTORIC INTEREST
 NEUTRAL
 HARMFUL
 FRAGMENT



SURVEY OF SIGNIFICANCE - SECOND FLOOR PLAN



Bridget Sheppard Architect



T: +44 (0)20 8498 0211
 W: bridgetsheppard.com
 E: bridget.sheppard@btinternet.com

1A Bramley Close
 Woodford Green
 Essex. IG8 7PL

CLIENT Venoru Ltd.	
PROJECT 49 Marchmont Street, WC1N 1AP	
DRAWING SURVEY OF SIGNIFICANCE second floor plan	
DRG. No 21	REVISION -
SCALE 1:50 @ A 3 paper	DATE 28 Dec 2017