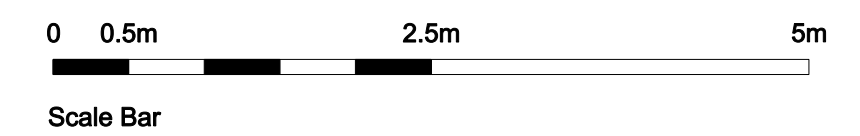
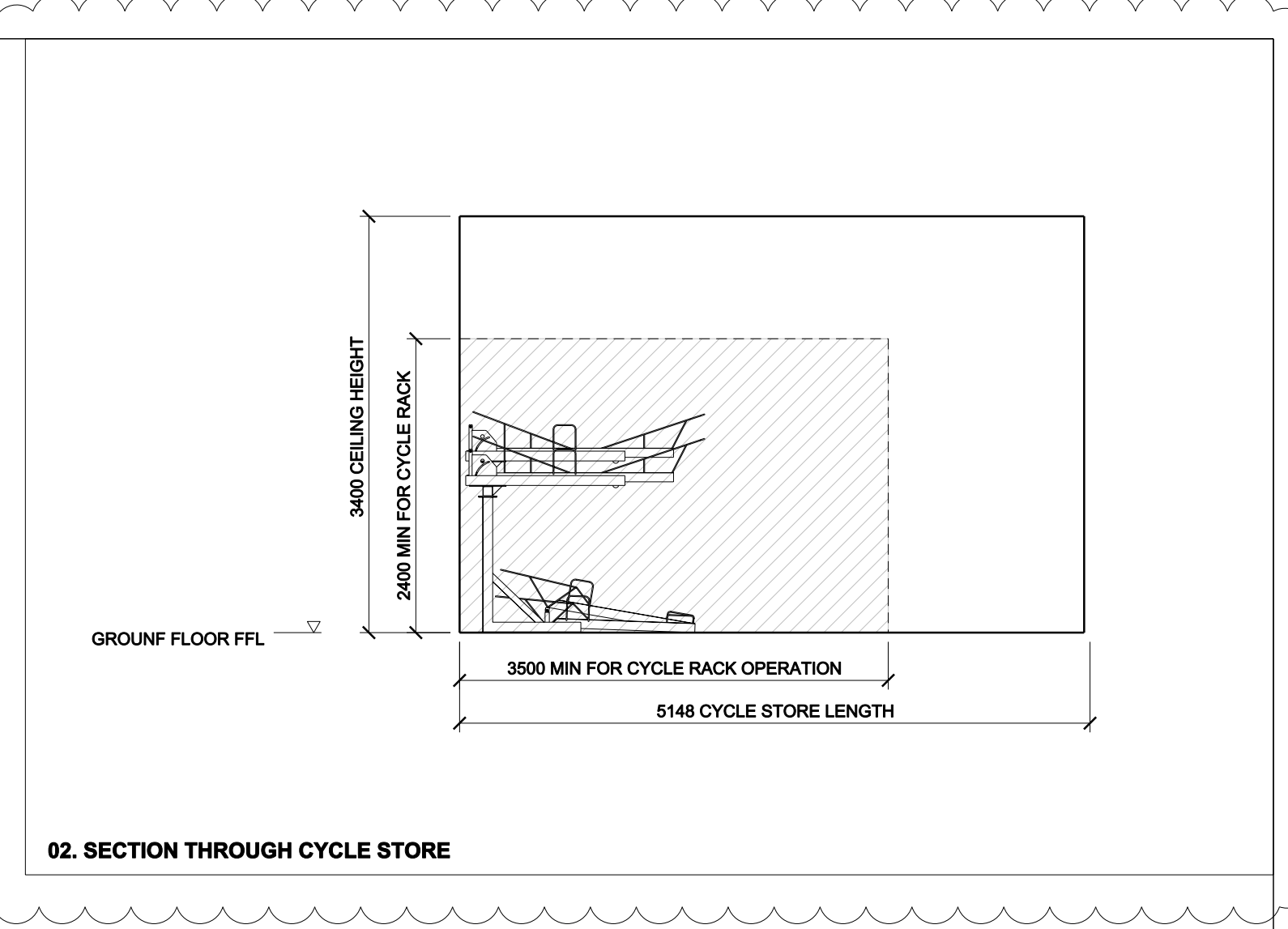
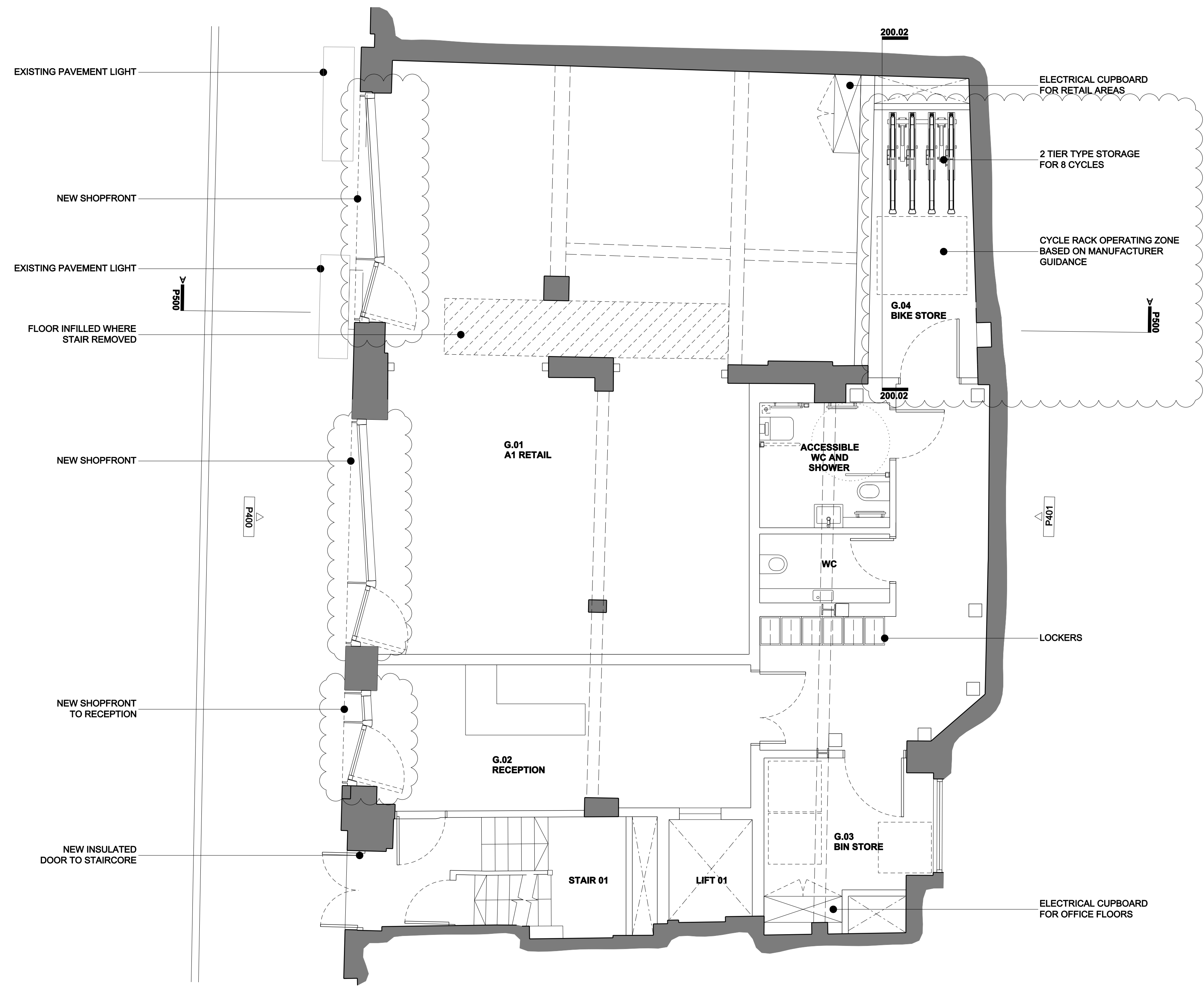


6-10 KIRBY STREET
 5 KIRBY STREET
 3-4 KIRBY STREET
 1-2 KIRBY ST.



REV.	DATE	DESCRIPTION
0	28.03.2017	PLANNING ISSUE
1	10.01.2018	REVISED IN LINE WITH PLANNING COMMENTS

REV.	DATE	DESCRIPTION

NOTES:

- ALL DIMENSIONS IN MM UNLESS OTHERWISE STATED
- THIS DRAWING IS TO BE READ IN CONJUNCTION WITH ALL RELEVANT CONTRACT DOCUMENTS
- THIS DRAWING IS TO BE READ IN CONJUNCTION WITH ALL ENGINEER'S DRAWINGS
- DO NOT SCALE FROM THIS DRAWING
- REPORT ANY ERRORS, CONTRADICTIONS, & OMISSIONS TO THE ARCHITECT AS SOON AS POSSIBLE
- WHEN THIS DRAWING IS ISSUED IN DWG FORMAT IT IS AN UNCONTROLLED VERSION ISSUED TO ENABLE THE RECIPIENT TO PREPARE THEIR OWN DRAWINGS FOR WHICH THEY ARE SOLELY RESPONSIBLE. IT IS BASED ON BACKGROUND INFORMATION CURRENT AT TIME OF ISSUE.
- BEN ADAMS ARCHITECTS ACCEPTS NO LIABILITY FOR ANY SUCH ALTERATIONS OR ADDITIONS TO OR DISCREPANCIES ARISING OUT OF CHANGES TO SUCH BACKGROUND INFORMATION WHICH OCCUR AFTER IT IS ISSUED BY BEN ADAMS ARCHITECTS.

KEY:

- EXISTING RETAINED ELEMENT
- NEW FLOOR AREA
- NEW ELEMENT

Ben Adams Architects

Third Floor, 19 Southpark Street, London SE1 0UP
 T: 020 7633 0000, ben@benadamsarchitects.co.uk, info@benadamsarchitects.co.uk

DRAWING NAME: PROPOSED GROUND FLOOR PLAN

PROJECT NAME: 3-5 KIRBY STREET

DRAWING NO: P200/1

JOB NO: 15-081

SCALE: 1:100 @ A3, 1:50 @ A1

STAGE: PLANNING