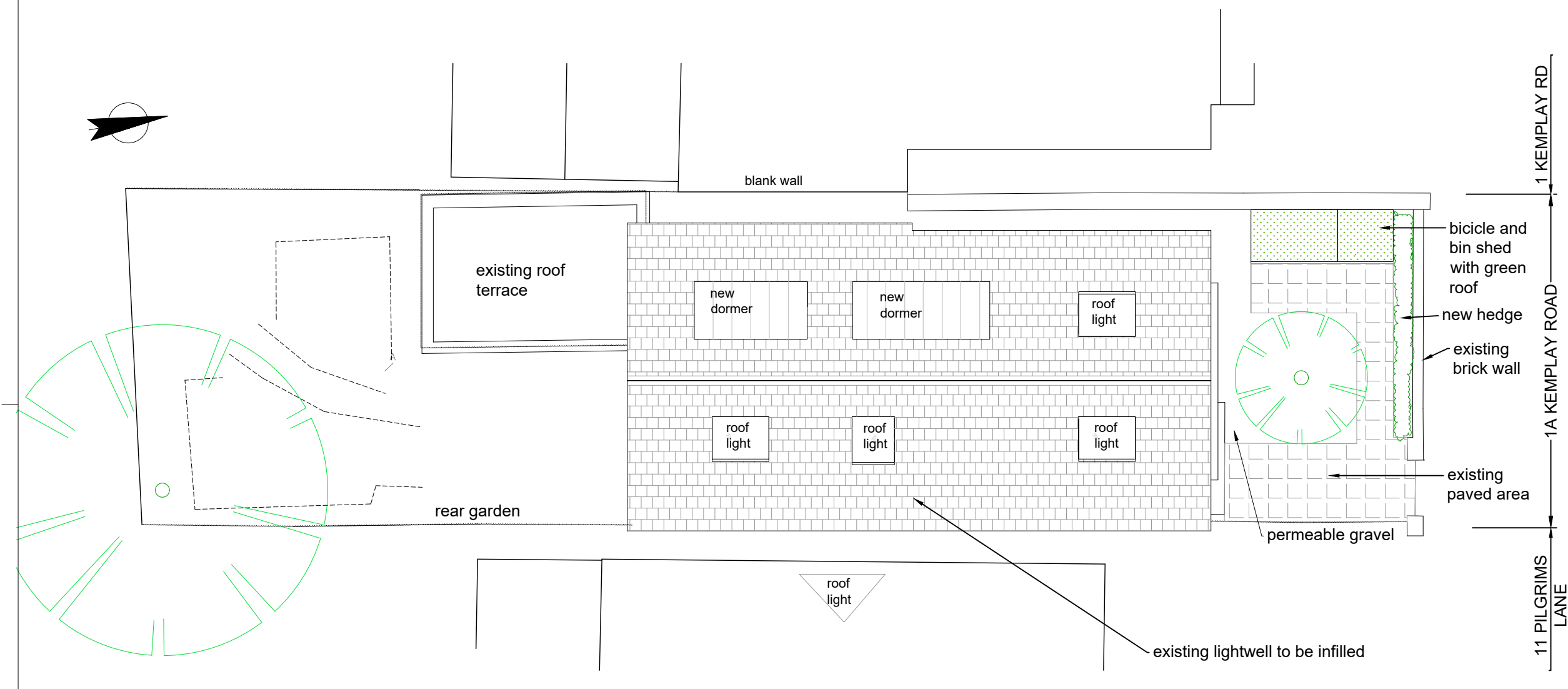


Notes



Rev D (09.01.18) side light well infilled
 Rev C (26.10.17) new side dormer
 Rev B (08.06.17) pre application design
 Rev A (12.03.17) roof lowered, end gables
 Revisions

AIVARS ARCHITECTS

Aivars Architect Ltd. Company No. 04648728

43B Eton Avenue . London NW3 3EP England
 Tel 44(0)20 7794 5411 - Fax 44(0)870 7061949
 carolina@aivarsarchitects.com

1A KEMPLAY ROAD
LONDON NW3 ITA

Drawing Title
PROPOSED
ROOF PLAN AND SITE
PLAN

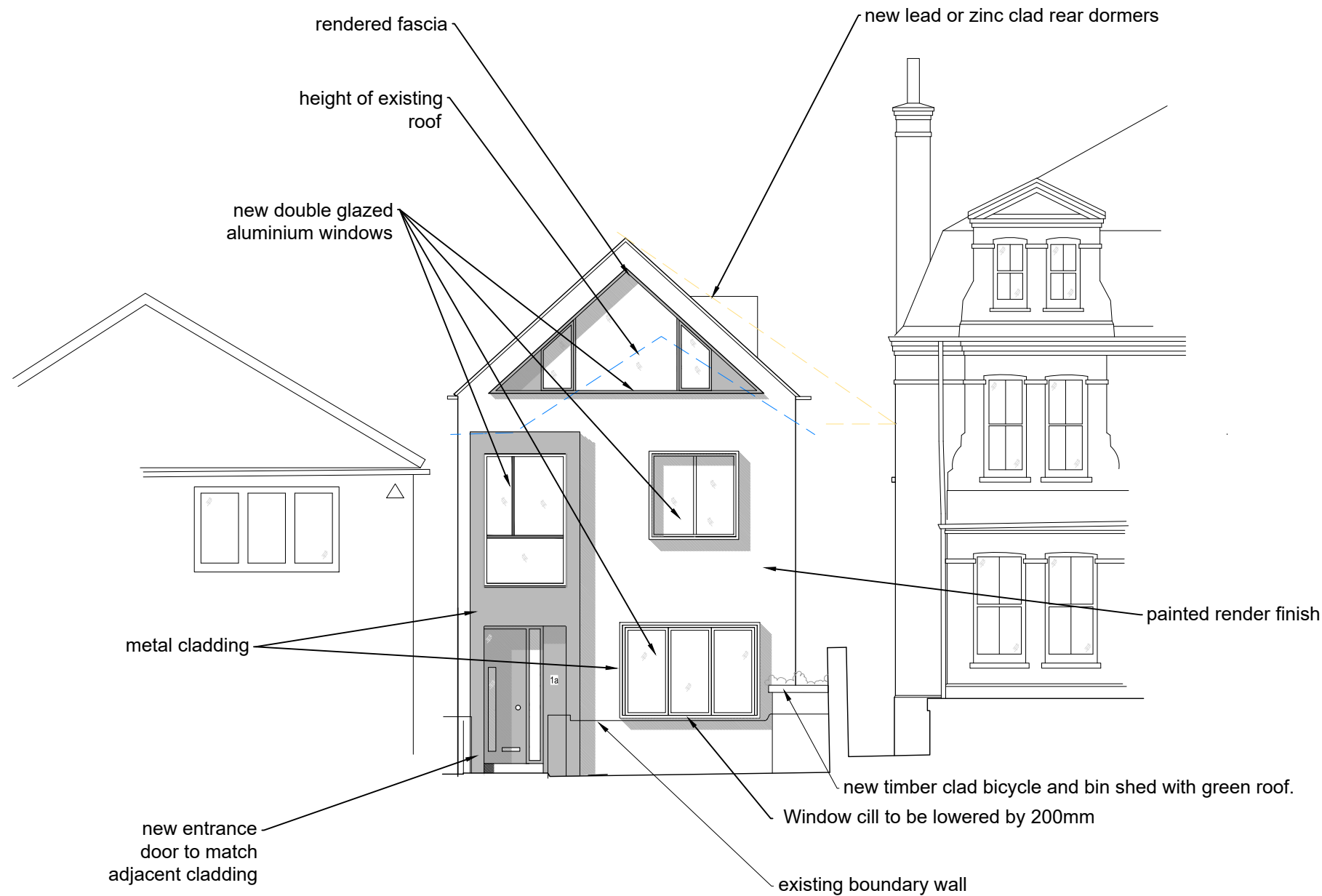
Scale 1:100@A3 Issued JANUARY 2017

Status **PLANNING**

Job No.	Dwg. No.	Rev.
224/P	/ 05	D



Notes



FRONT ELEVATION

Rev D (09.01.18) window treatment
 Rev D (26.10.17) first floor extended, roof raised
 Rev C (19.09.17) bicycle and bin shed added
 Rev B (08.06.17) pre application design
 Rev A (12.03.17) end gables
 Revisions

AIVARS ARCHITECTS

Aivars Architect Ltd. Company No. 04648728

43B Eton Avenue . London NW3 3EP England
 Tel 44(0)20 7794 5411 - Fax 44(0)870 7061949
 carolina@aivarsarchitects.com

1A KEMPLAY ROAD
LONDON NW3 ITA

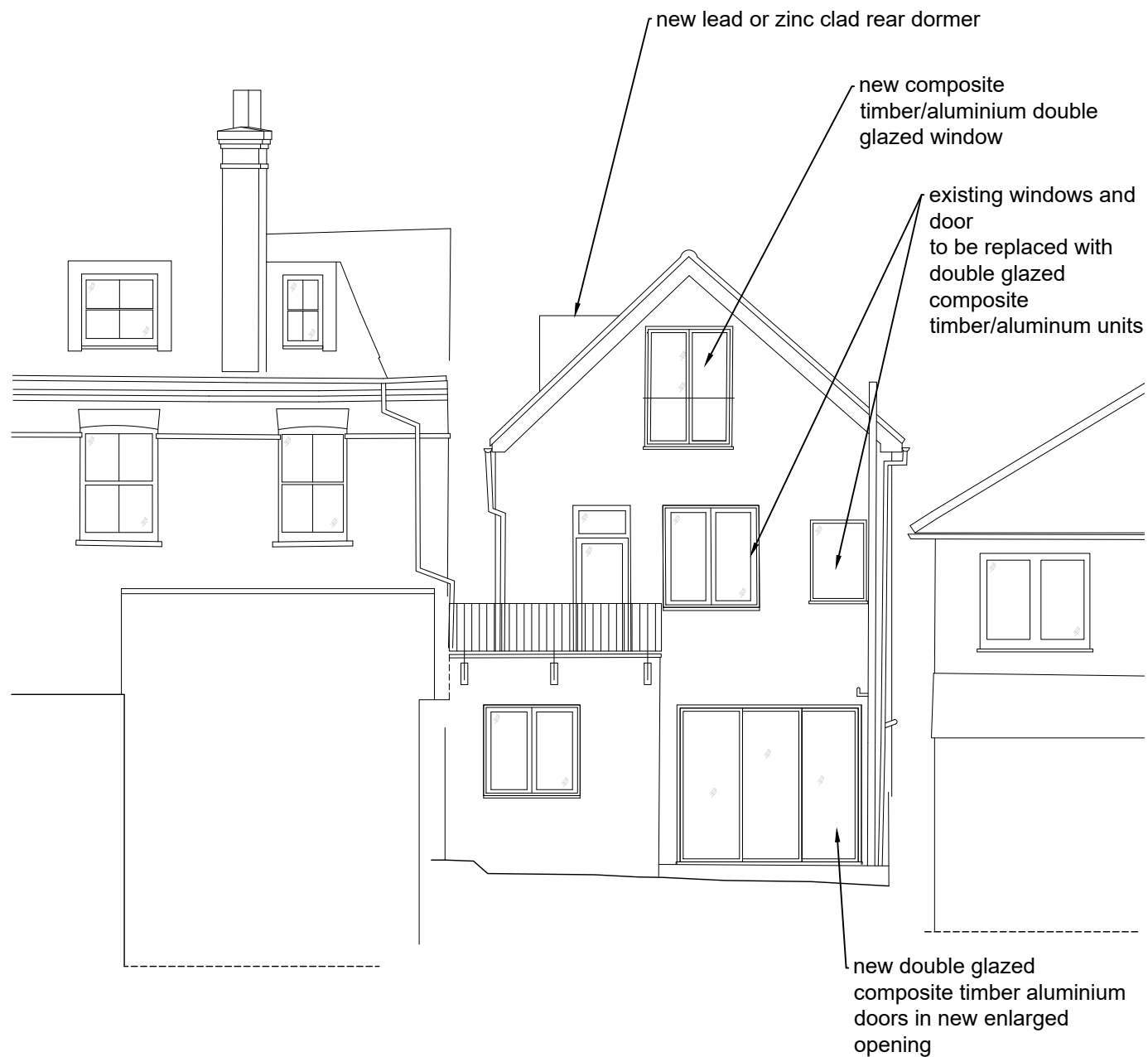
Drawing Title
**PROPOSED FRONT
 ELEVATION
 AND SECTION**

Scale 1:100@A3 Issued JANUARY 2017

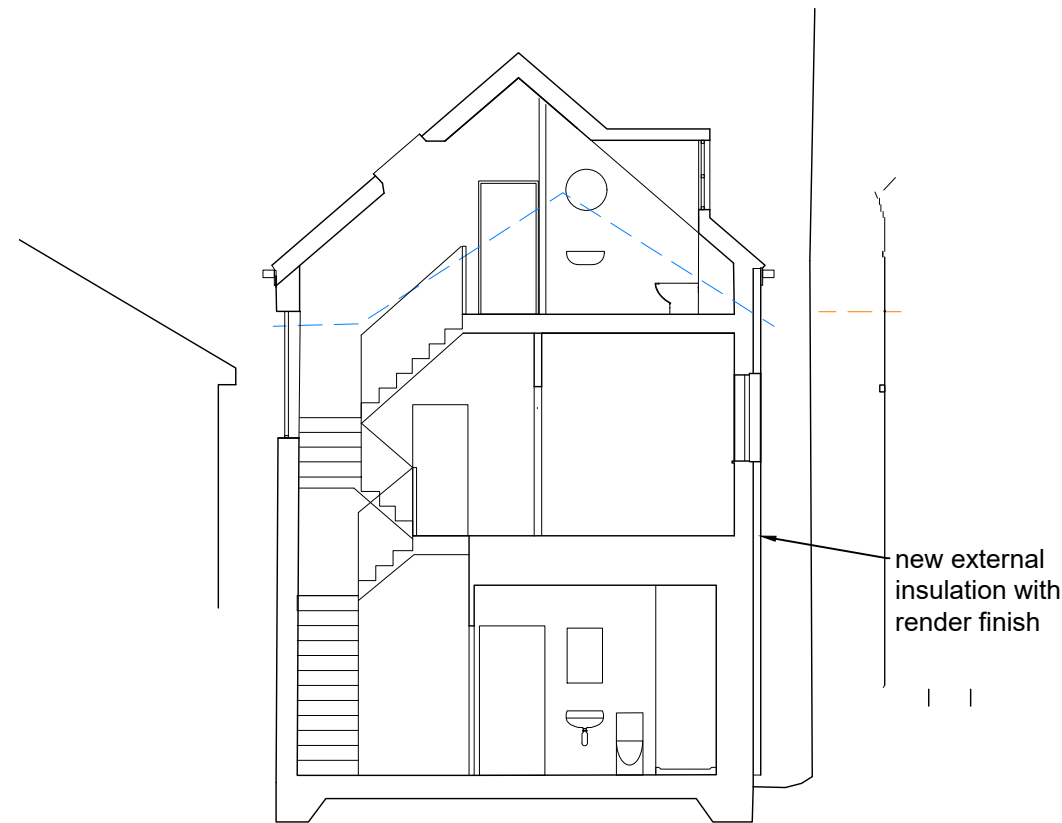
Status **PLANNING**

Job No. 224/P	Dwg. No. / 06	Rev. E
-------------------------	-------------------------	------------------

Notes



REAR ELEVATION



SECTION



- Rev E (09.01.18) staircase moved
 - Rev D (21.10.17) Roof raised
 - Rev C (25.06.17) A/C unit added
 - Rev B (08.06.17) pre application design
 - Rev A (12.03.17) roof lowered, end gables
- Revisions

AIVARS ARCHITECTS

Aivars Architect Ltd. Company No. 04648728

43B Eton Avenue . London NW3 3EP England
Tel 44(0)20 7794 5411 - Fax 44(0)870 7061949
carolina@aivarsarchitects.com

1A KEMPLAY ROAD
LONDON NW3 ITA

Drawing Title

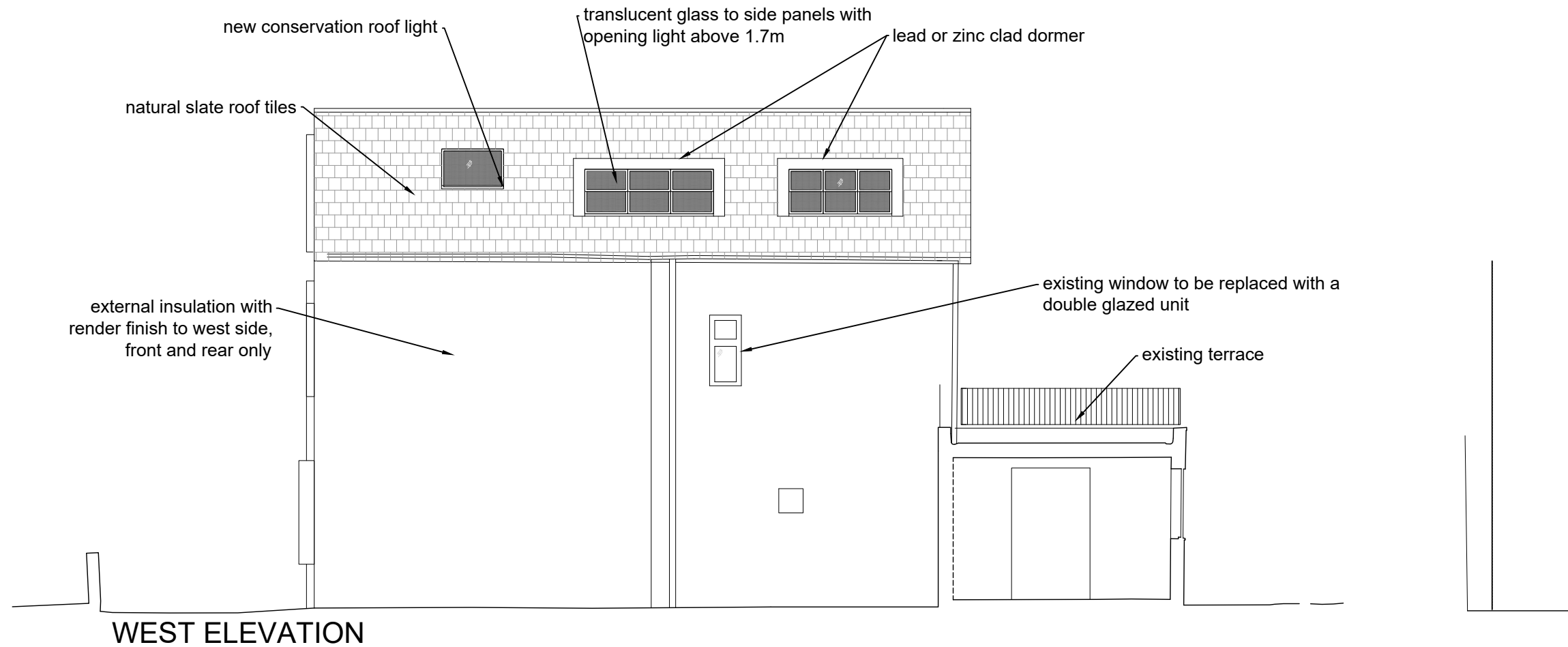
PROPOSED REAR
ELEVATION AND
SECTION

Scale 1:100@A3 Issued JANUARY 2017

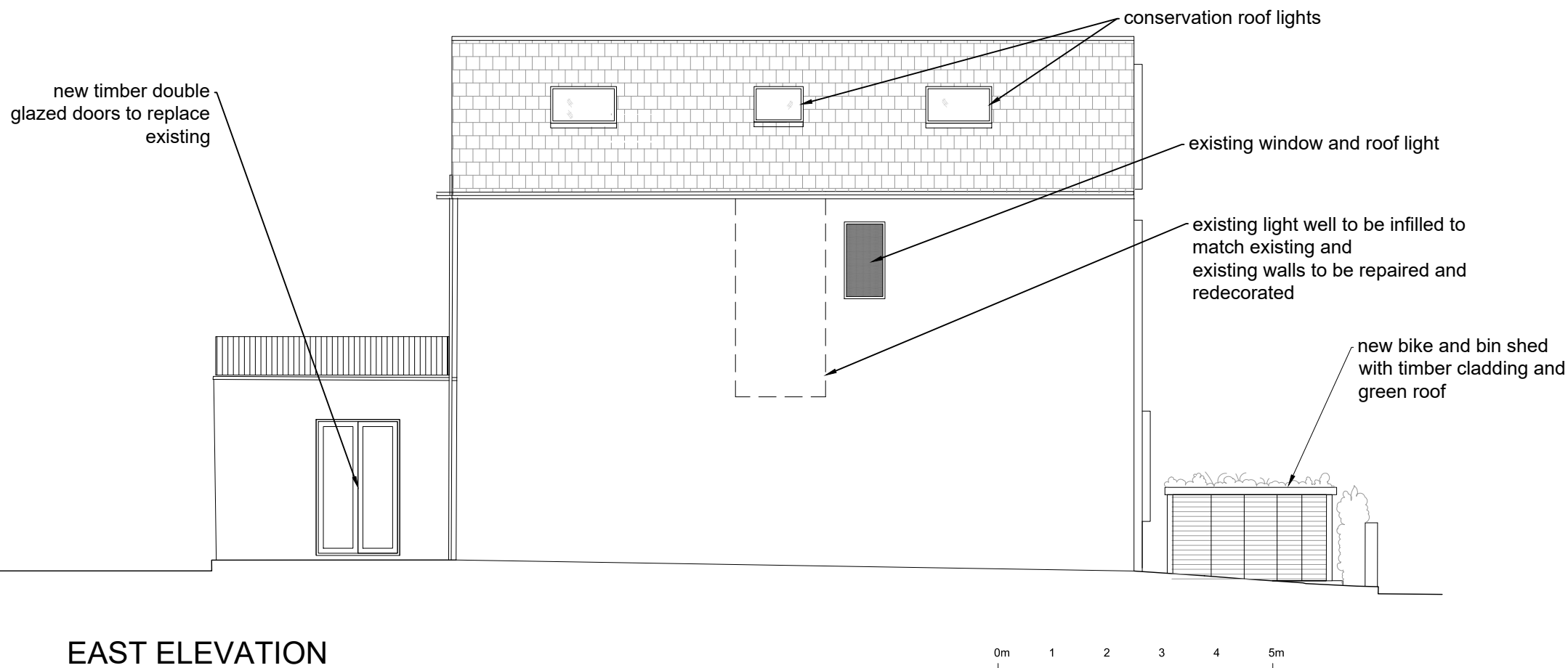
Status PLANNING

Job No. 224/P	Dwg. No. / 07	Rev. E
------------------	------------------	-----------

Notes



WEST ELEVATION



EAST ELEVATION

Rev D (09.01.18) side lightwell filled, A/C removed
 Rev C (19.09.17) new bike shed and acoustic A/C enclosure
 Rev B (08.06.17) pre application design
 Rev A (12.03.17) roof lowered, end gables
 Revisions

AIVARS ARCHITECTS

Aivars Architect Ltd. Company No. 04648728

43B Eton Avenue . London NW3 3EP England
 Tel 44(0)20 7794 5411 - Fax 44(0)870 7061949
 carolina@aivarsarchitects.com

**1A KEMPLAY ROAD
 LONDON NW3 ITA**

Drawing Title

**PROPOSED
 SIDE ELEVATIONS**

Scale 1:100@A3 Issued JANUARY 2017

Status **PLANNING**

Job No. 224/P Dwg. No. / 08 Rev. D

Notes



new solid fence

external wall insulation

new bicycle shed and bin store

study

kitchen

shower room

living room

patio

st

hallway

new sliding doors



metal cladding surrounds

existing window to be blocked

new metal clad front door and side light

GROUND FLOOR PLAN

- Rev F (09.01.18) staircase moved
 - Rev E (26.10.17) cladding to front facade
 - Rev D (19.09.17) bike shed added
 - Rev C (25.06.17) A/C unit added
 - Rev B (08.06.17) pre application design
- Revisions

AIVARS ARCHITECTS

Aivars Architect Ltd. Company No. 04648728

43B Eton Avenue . London NW3 3EP England
Tel 44(0)20 7794 5411 - Fax 44(0)870 7061949
carolina@aivarsarchitects.com

1A KEMPLAY ROAD
LONDON NW3 ITA

Drawing Title

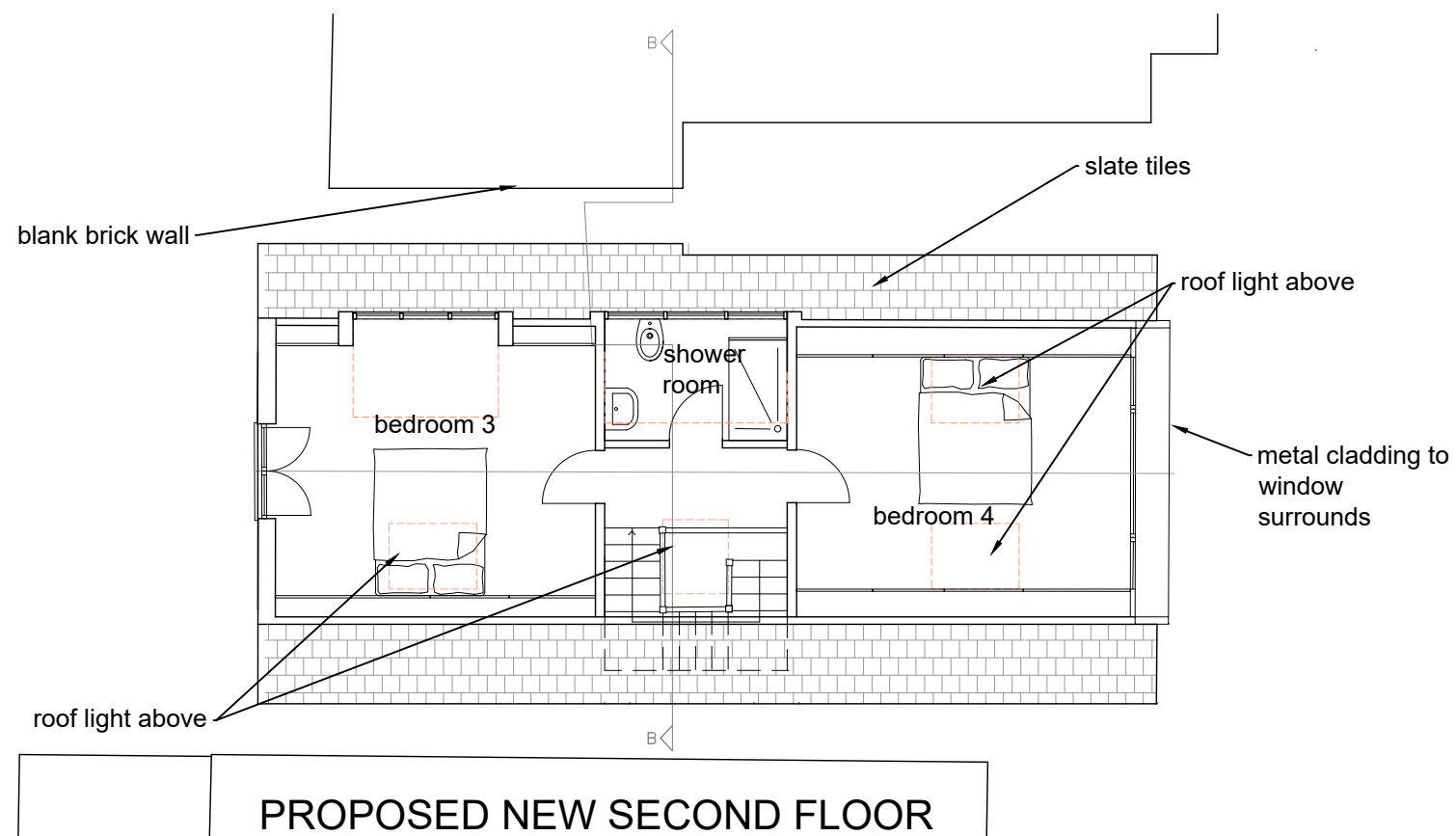
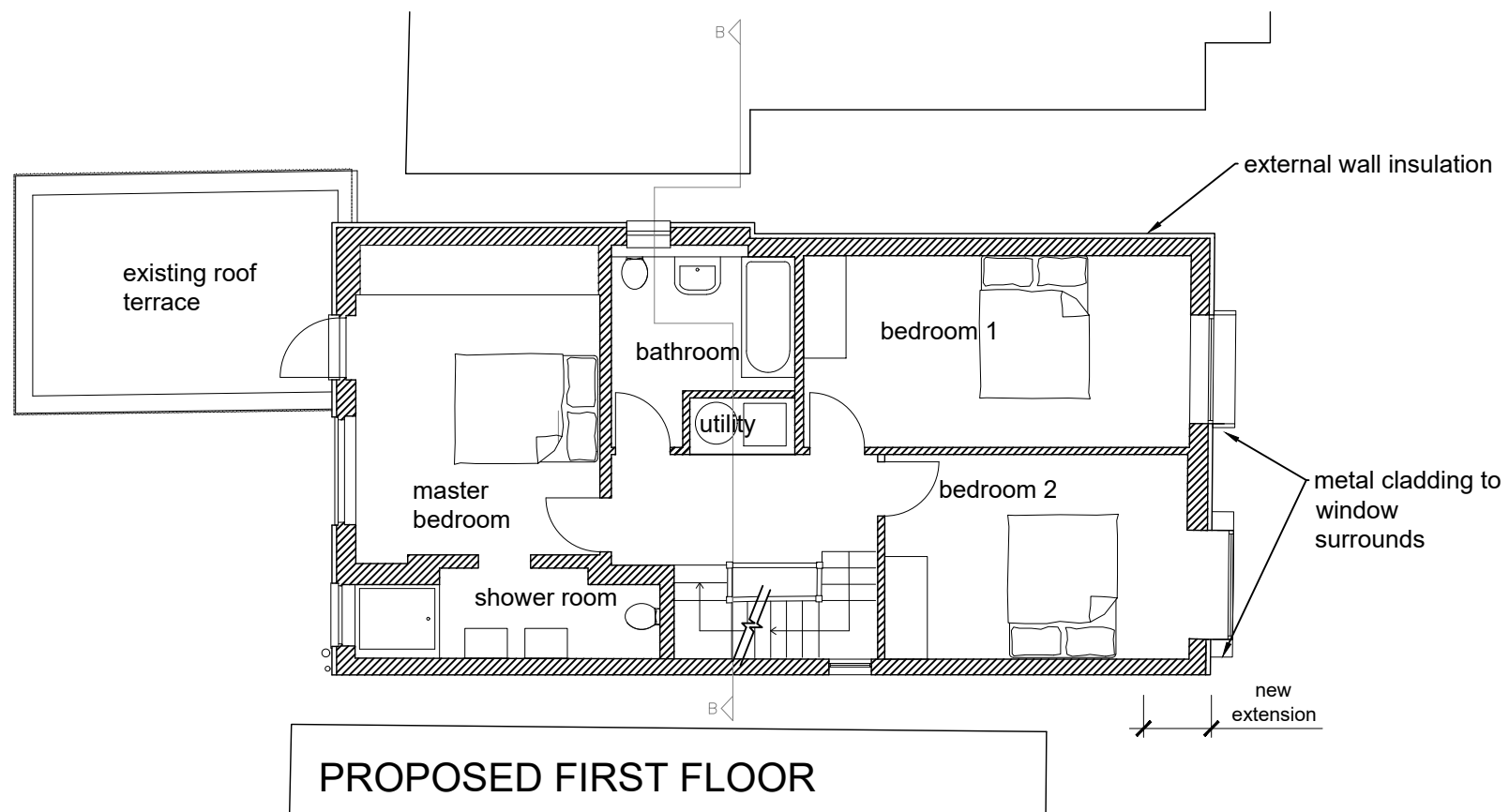
PROPOSED
GROUND FLOOR AND
SITE PLAN

Scale 1:100@A3 Issued JANUARY 2017

Status PLANNING

Job No.	Dwg. No.	Rev.
224/P	/ 09	F

Notes



Rev C (09.01.18) light well filled and staircase moved
 Rev B (26.10.17) front first floor extension
 Rev A (08.06.17) pre application design
 Revisions

AIVARS ARCHITECTS

Aivars Architect Ltd. Company No. 04648728

43B Eton Avenue . London NW3 3EP England
 Tel 44(0)20 7794 5411 - Fax 44(0)870 7061949
 carolina@aivarsarchitects.com

**1A KEMPLAY ROAD
 LONDON NW3 ITA**

Drawing Title

**PROPOSED
 FIRST AND SECOND
 FLOOR PLANS**

Scale 1:100@A3 Issued JANUARY 2017

Status **PLANNING**

Job No. 224/P	Dwg. No. / 10	Rev. C
-------------------------	-------------------------	------------------

