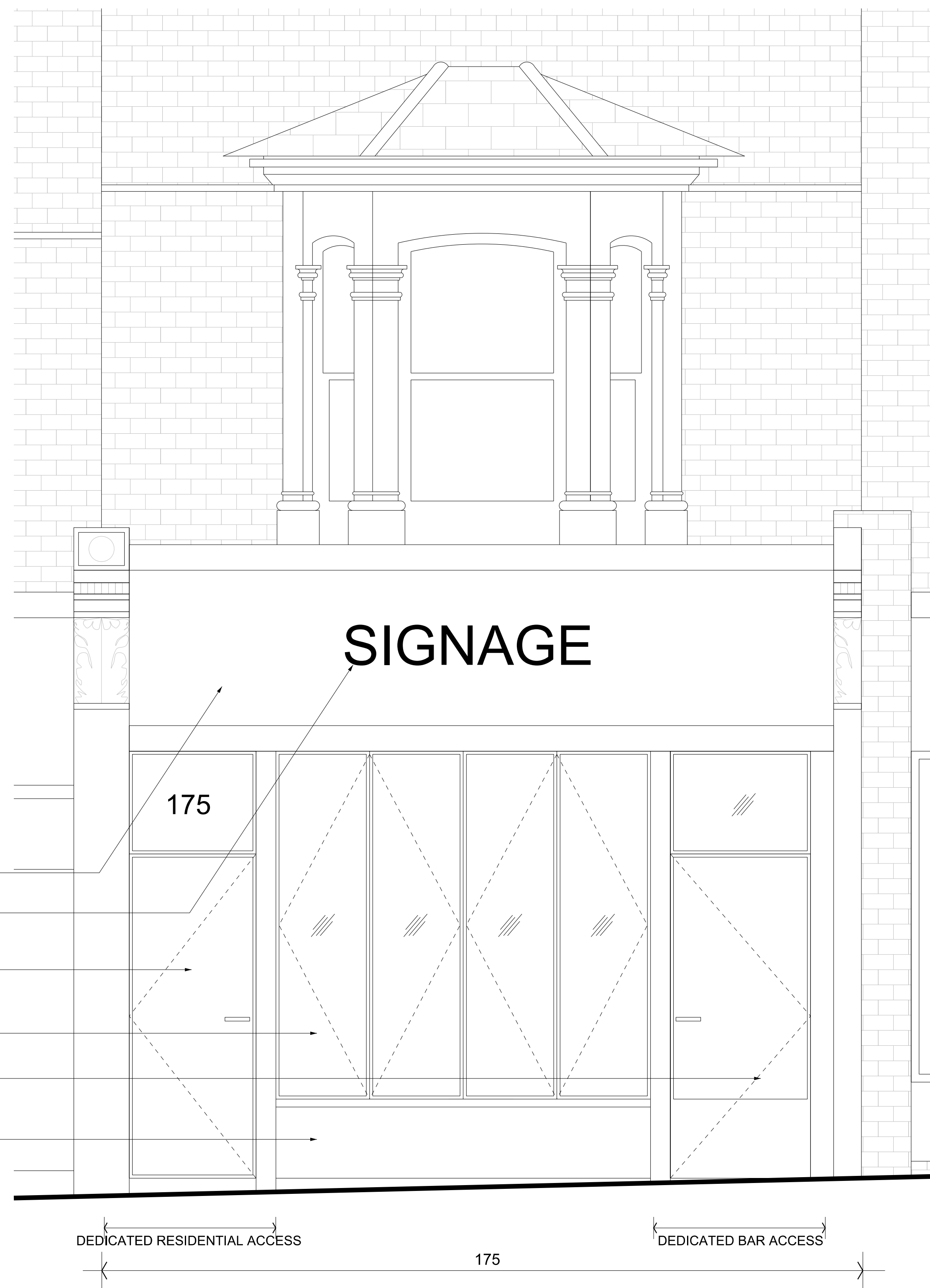


Existing Elevation



Proposed Elevation

- ELECTRIC BLUE NEON SIGNAGE
- BLACK PAINTED MOULDED CAPITAL
- BLACK PAINTED SLATTED TIMBER FASCIA
- EXTRACT VENT
- BLACK PAINTED TIMBER DOORS
- NEW FASCIA IN DARK METAL OR DARK TIMBER
- NEW SIGNAGE
- RESIDENTIAL ACCESS DOOR IN DARK TIMBER WITH BRASS FITTINGS
- BIFOLD WINDOWS WITH DARK METAL FRAME & BRASS FITTINGS
- BAR ACCESS DOOR IN DARK METAL & GLASS WITH BRASS FITTINGS
- STALL RISER IN DARK METAL OR BRASS

01

02

|  |                   |                     |
|--|-------------------|---------------------|
| Drawing Purpose<br><b>For Planning</b> |                   |                     |
| Drawn by<br>JS                         | Checked by<br>ABD | Authorised by<br>KH |

| Revision | Date       | Description  | Legend |
|----------|------------|--------------|--------|
| -        | 13-11-2017 | For Planning |        |
| -        | 22-12-2017 | For Planning |        |

|          |  |
|----------|--|
| Key Plan | Architect<br><b>Collective Works LLP</b><br>8 Mackintosh Lane<br>London, E9 6AB<br>info@collectiveworks.net http://www.collectiveworks.net |
|          | Planning Consultant<br><b>Ridgeback Consulting</b><br>5 Chancery Lane<br>London, WC2A 1LG  |

|   |   |
|---|---|
| Project<br><b>0112 Hampstead Bar</b><br>175 West End Lane | Client<br><b>Partridge Properties Ltd</b> |
|---|---|

|                            |                                      |
|----------------------------|--------------------------------------|
| Scale @ A1<br>1:20         | Drawing Number<br><b>CW-0112-220</b> |
| Drawing Date<br>13-11-2017 | Revision Date<br>22-12-2017          |
|                            | Revision<br>1                        |

|   |  |  |
|---|--|--|
| Drawing Title<br><b>Existing &amp; Proposed Elevations</b><br>Shopfront |  |  |
| © copyright Collective Works LLP, all rights reserved 2017              |  |  |