



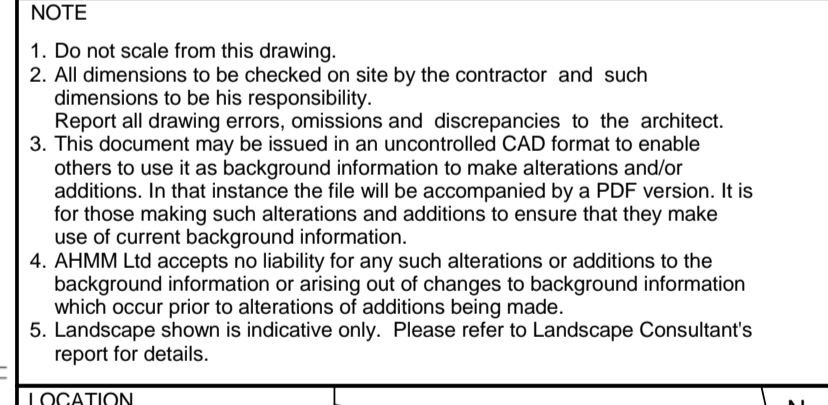
KEY
Plant shown are indicative only

REV	DATE	DESCRIPTION
P01	300514	PLANNING DRAFT
P02	030714	PLANNING DRAFT
P03	260814	PLANNING SUBMISSION
P04	051214	PLANNING AMENDMENT
P05	260115	PLANNING AMENDMENT
P06	080116	NMA 01
P07	080416	NMA 02
P08	281016	NMA 03
P09	281016	NMA 04
P10	050517	NMA 05
P11	291117	NMA 06

CONSULTANTS

CLIENT:	21-31 New Oxford Street Development Ltd.
CONTRACTOR:	Laing O'Rourke
PROJECT MANAGER:	Gardiner & Theobald
STRUCTURAL ENGINEER:	Anup Structures
MECHANICAL ENGINEER:	Anup M&E
ACOUSTIC CONSULTANT:	Anup Acoustics
CLADDING CONSULTANT:	Anup Facades
COST CONSULTANT:	Arcadis
LANDSCAPE ARCHITECT:	Gillespies

- NOTE
- Do not scale from this drawing.
 - All dimensions to be checked on site by the contractor and such dimensions to be his responsibility. Report all drawing errors, omissions and discrepancies to the architect.
 - This document may be issued in an uncontrolled CAD format to enable others to use it as background information to make alterations and/or additions. In that instance the file will be accompanied by a PDF version. It is for those making such alterations and additions to ensure that they make use of current background information.
 - AHMM Ltd accepts no liability for any such alterations or additions to the background information or arising out of changes to background information which occur prior to alterations of additions being made.
 - Landscape shown is indicative only. Please refer to Landscape Consultant's report for details.



ALLFORD HALL MONAGHAN MORRIS
 ARCHITECTS Ltd
 MORELANDS, 5-23 OLD STREET LONDON EC1V 9HL
 TEL 020 7251 5261 FAX 020 7251 5123 WEB WWW.AHMM.CO.UK

job title
The Post Building

drawing title / location
South Elevation - Proposed

drawn by	checked	scale	status
FB	MM	1 : 200 @ A1	PLANNING

project	drawing no.	revision
12141	PL_(00)_301	P11