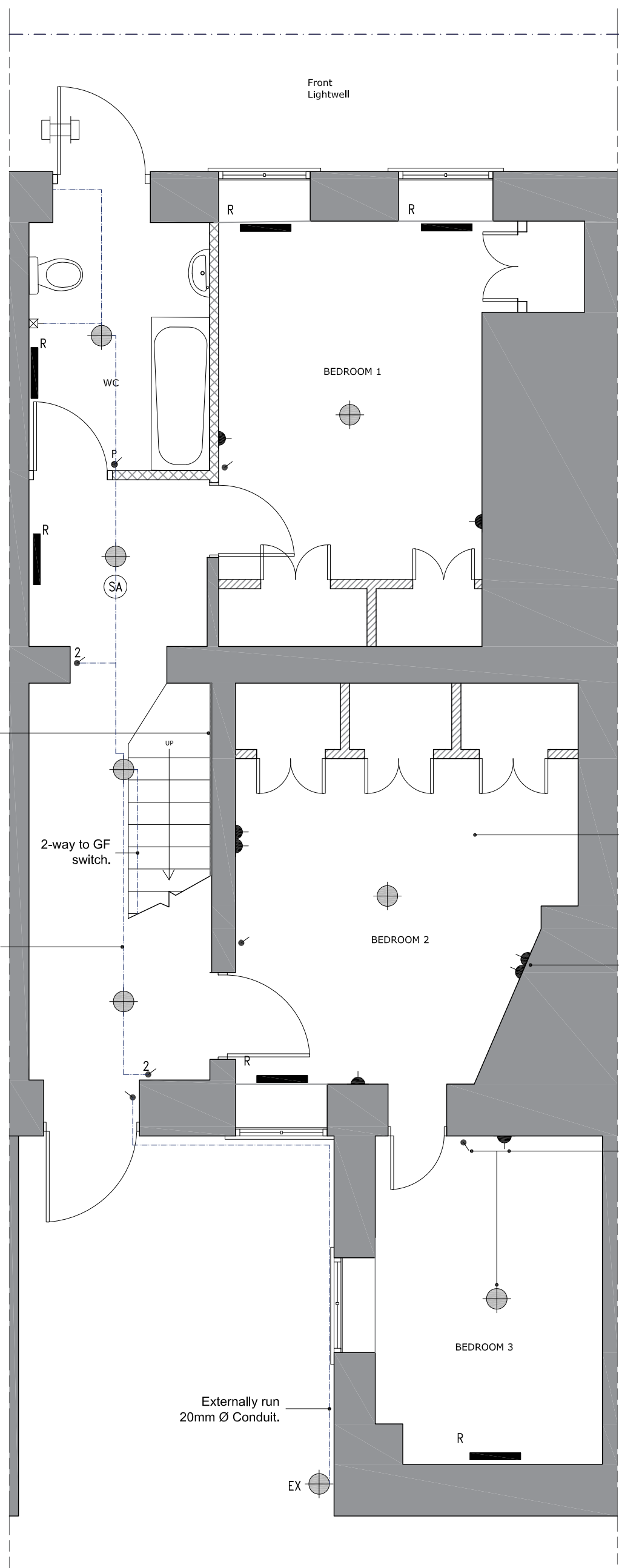


10 RUGBY STREET
BASEMENT PLAN



KEY	
D1	28W 2D CEILING MOUNTED FITTING OPAQUE DIFFUSER
D2	26W LOW ENERGY PENDENT
	1200 LONG FLUORESCENT CEILING MOUNTED FITTING OPAQUE DIFFUSER
EX	EXTERNAL LOW ENERGY ENCAPSULATED LIGHT FITTING WITH PIR AND DAYLIGHT SENSOR
M	WALL LIGHT FITTING OVER MIRROR WITH LONG PULL CORD
✓	ONE WAY LIGHT SWITCH
IS-30A	30AMP FUSED & SWITCHED ISOLATOR WITH INDICATOR LIGHT
IS	SWITCHED FUSED ISOLATOR
DS	SWITCHED DOUBLE SOCKET OUTLET (450mm ABOVE FLOOR LEVEL)
S	250/115 v SHAVER SOCKET
EF	CEILING MOUNTED EXTRACT FAN
SA	SMOKE ALARM. (WITH A SMOKE DETECTION FUNCTION).
HD	HEAT DETECTOR (MAINS--OPERATED)
CCU	RCD CONSUMER UNIT
AV	TV/AM & FM TV AERIAL SOCKET
BT	BT SOCKET
SKY	MASTER SKY TRIPLEX PLATE
T	TOWEL HEATER
R	RADIATOR
HP	HEATING PROGRAMMER
TC	THERMOSTATIC CONTROL FOR UNDERFLOOR HEATING OR RADIATORS
WHEF	WALL--MOUNTED HIGH LEVEL EXTRACT FAN
B	BOILER
MHC	MEGAFLO HOT WATER CYLINDER
EM	ELECTRIC METER
GM	GAS METER
	CEILING AFFIXED 20mm Ø PVC CONDUIT ROUTE FOR LIGHTING

To Hallway and Bathroom Areas: which fall below the communal areas, cables will be fed/run in 20mm Ø PVC Conduit affixed to the plasterboard ceiling (avoiding disturbance to the communal areas above which are in constant use).

No original historic ceiling or wall finishes at basement level, unless indicated otherwise.

All Power and Lighting positions to match original.

To Bedroom's 1, 2 & 3; Pendant light positions, switches and sockets fed from cables passing through the floor void above and then either passing directly into the light fitting or fed from cables run in vertical mini-trunking affixed to the plastered walls.

CONTRACTORS TO VERIFY ALL DIMENSIONS ON SITE BEFORE COMMENCING ANY WORKS OR PREPARING SHOP DRAWINGS. ALL WORK MUST COMPLY WITH RELEVANT AUTHORITIES REQUIREMENTS. DIMENSIONS MUST NOT BE SCALED FROM THIS PRINT

LANDERS
AND ASSOCIATES

Architecture, Building Surveying, Interior Design, Building Defects and
Project Co-ordination
RAPIER HOUSE, 40-46 LAMBS CONDUIT STREET
LONDON WC1N 3LJ
TEL: 020 7831 6311 FAX: 020 7831 1826

Client The Governing Body of Rugby School
c/o Farebrother

Project Flat 1, 10 Rugby Street, London WC1N
Electrical Re-wire

Drawing Proposed Electrical Layout
Basement Plan

Scale	Date	Drawn	Checked
1:50 @ A3	08.01.18	MN	RS

Drawing No.
17074/06

