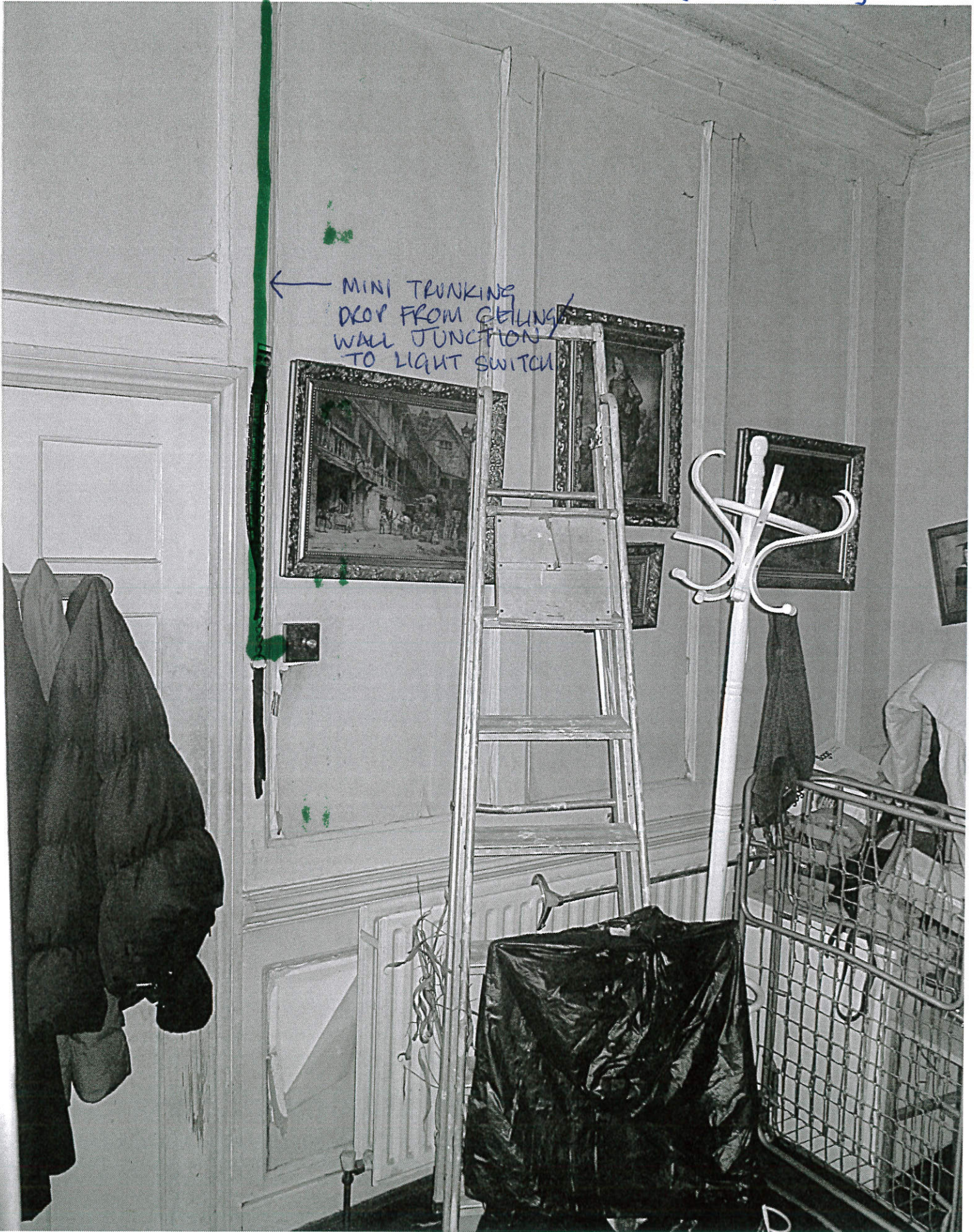


FLAT 1, 10 RUGBY ST  
GROUND LEVEL  
(DINING ROOM)

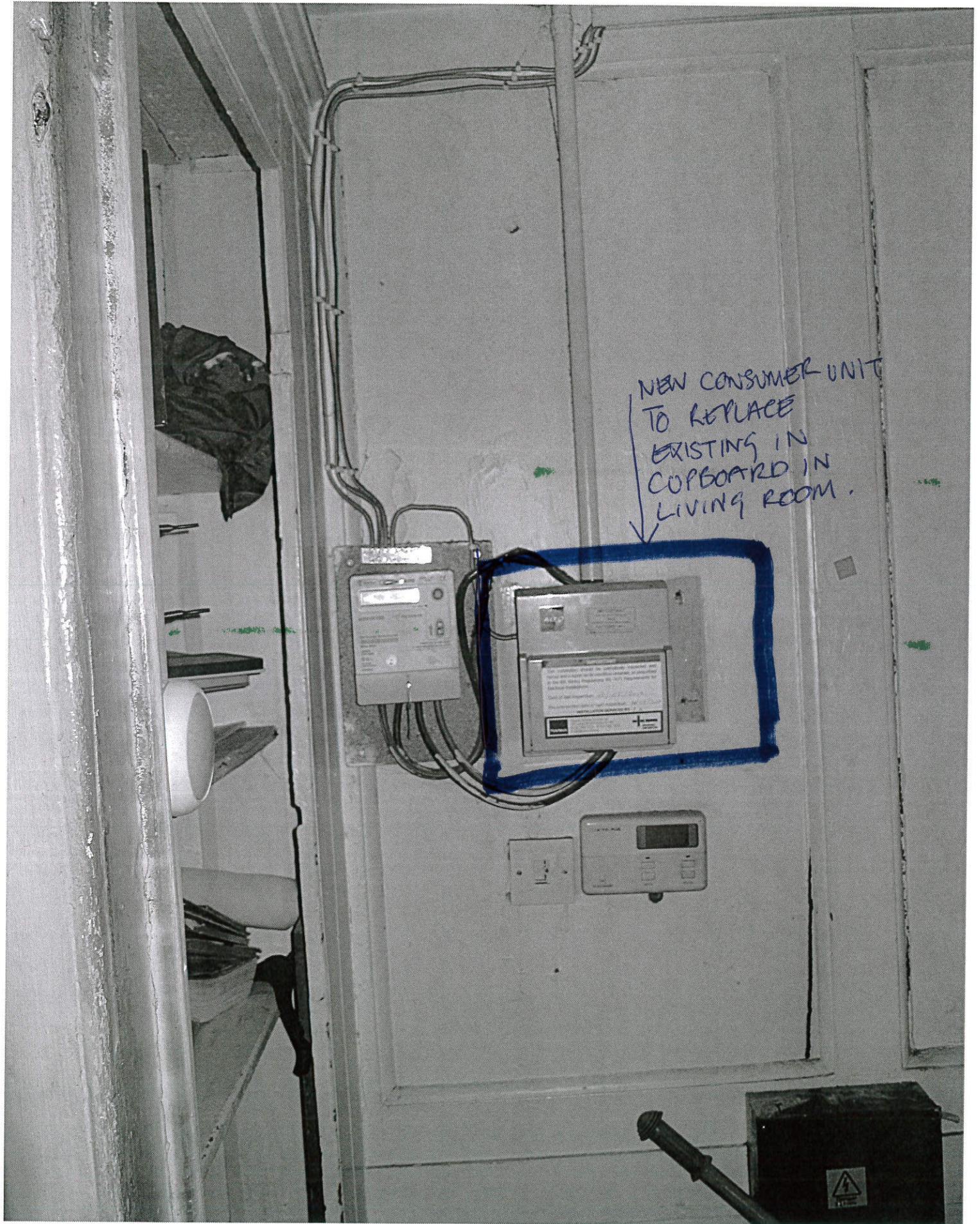
← MINI TRUNKING  
DROP FROM CEILING/  
WALL JUNCTION  
TO LIGHT SWITCH



17074/ SK1.



FLAT 1, 10 RUSBY ST, WCL.  
GROUND FLOOR.



NEW CONSUMER UNIT  
TO REPLACE  
EXISTING IN  
COPBOARD IN  
LIVING ROOM.

17074 / SK2.



← MINI TRUNKING

← CLIP DIRECT CABLE  
PASSING OVER DADO

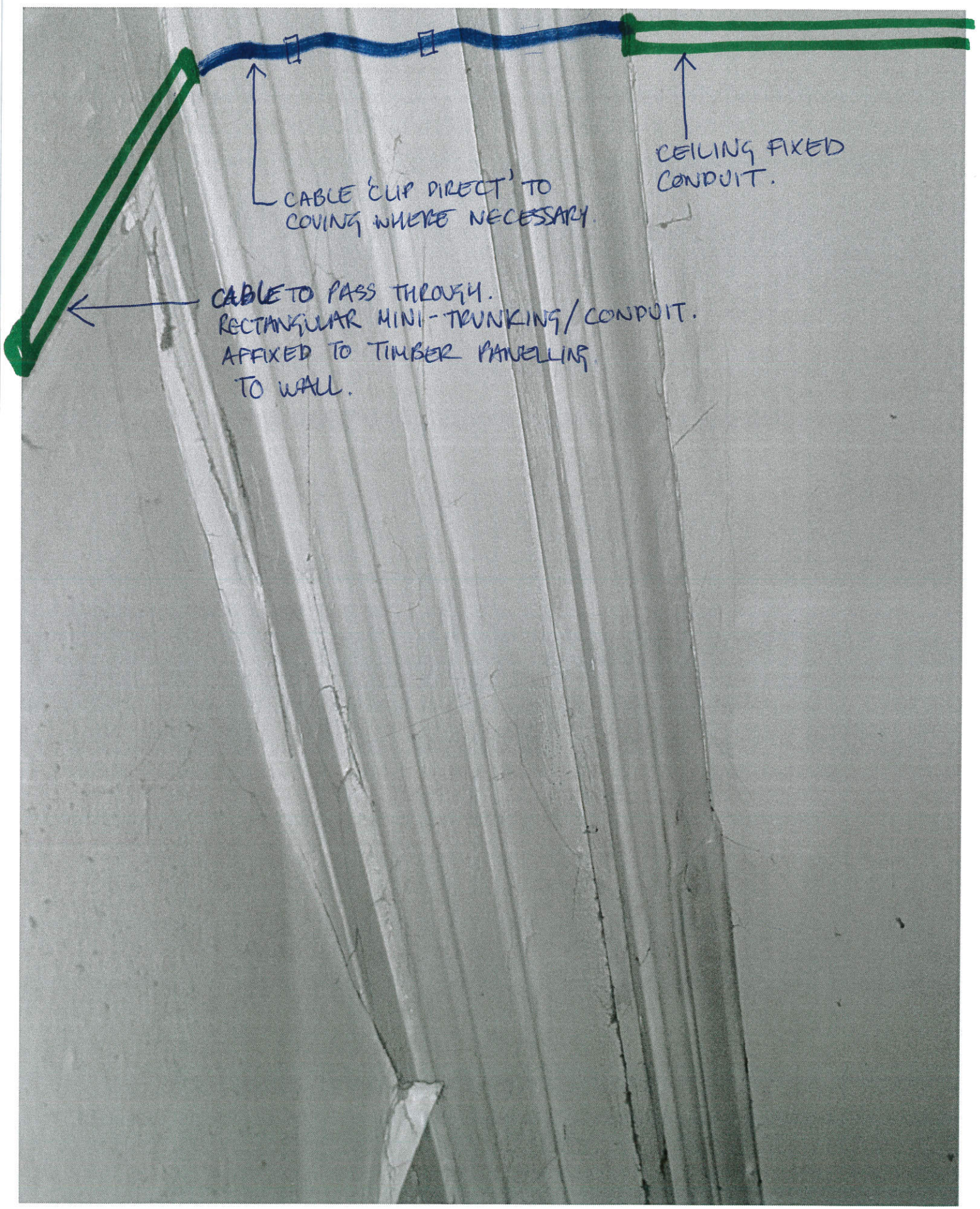
← MINI TRUNKING.

→ TO POWER SOCKET.

17074/SK3



FLAT, 1, 10 RUGBY ST, WC1.

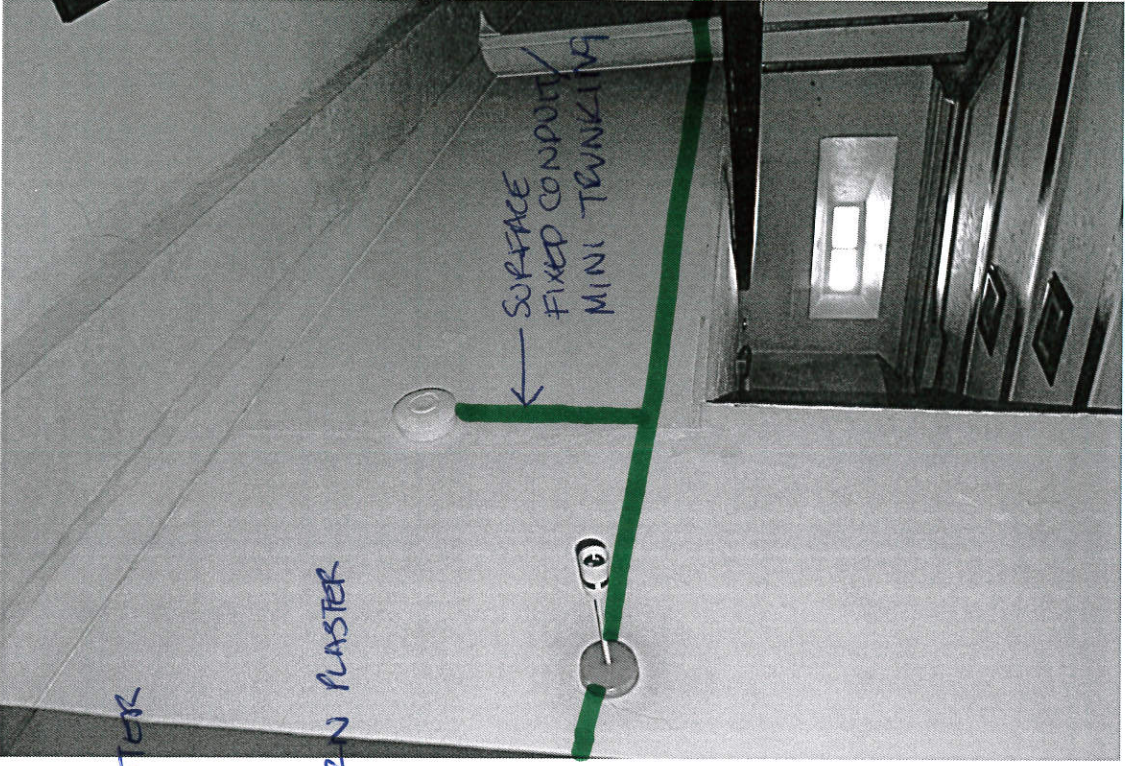
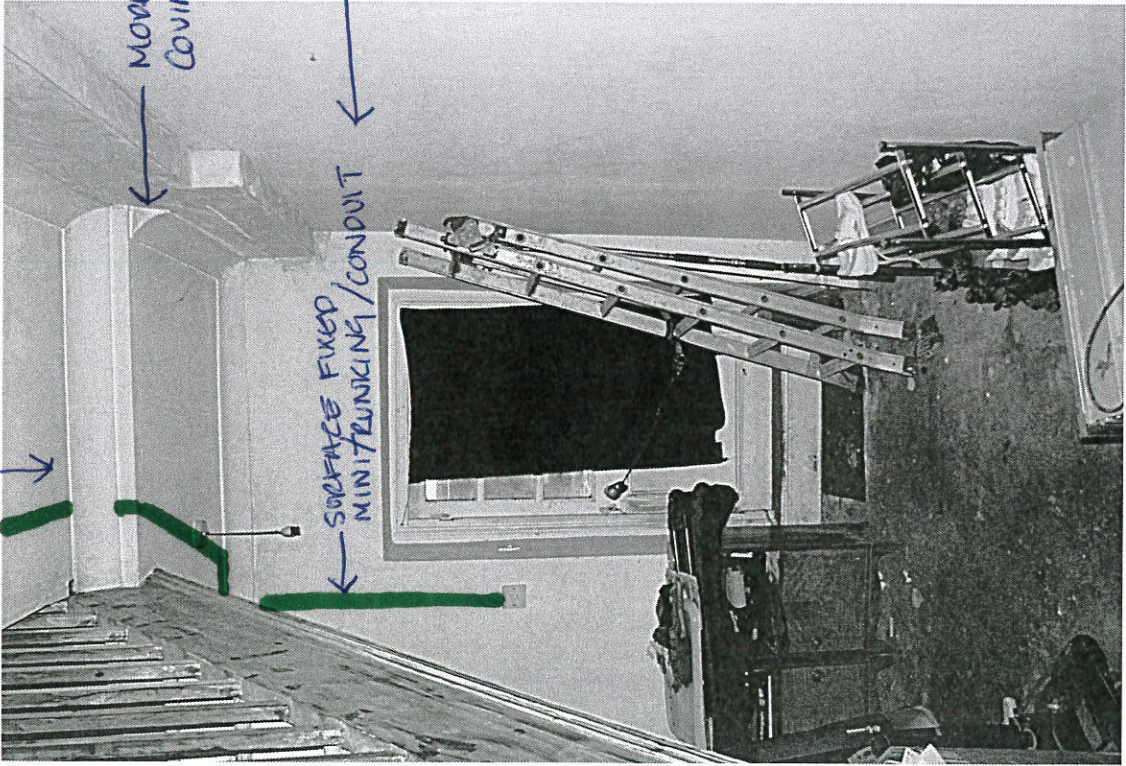


17074/SK4



FLAT 1, 10 RUGBY STREET, WCI1.  
BASEMENT LEVEL.  
(HALLWAY)

— MODERN PLASTERBOARD CEILINGS.

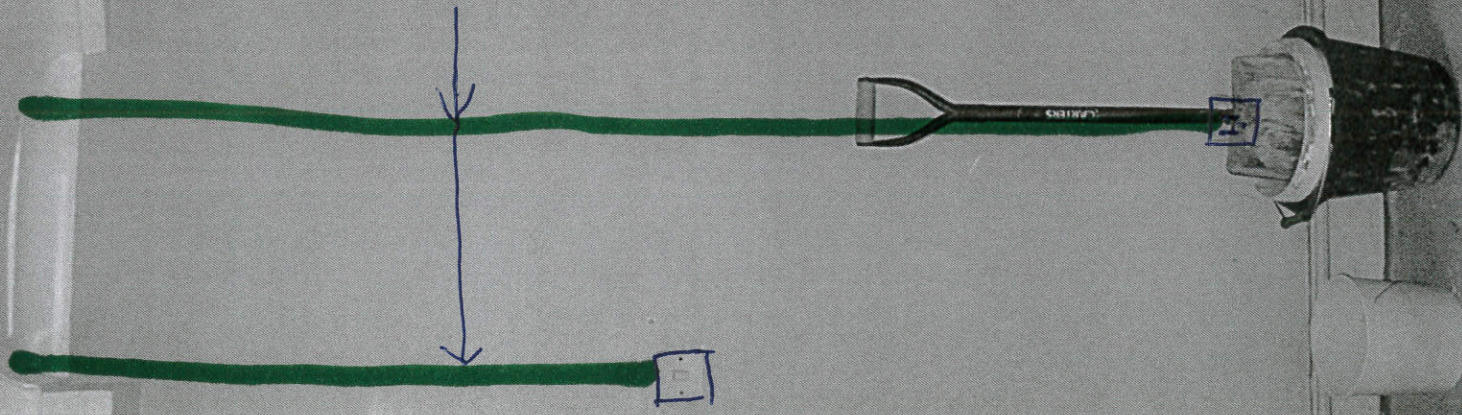


17074/SK5



FLAT 1, 10 RUSBY ST.  
BASEMENT  
(bedroom 3)

CABLES TO BEDROOM  
LIGHTING / POWER TO  
PASS DIRECTLY FROM  
FLOOR VOID ABOVE  
FED IN SURFACE  
FIXED MINI TRUNKING.



17074/SK6.