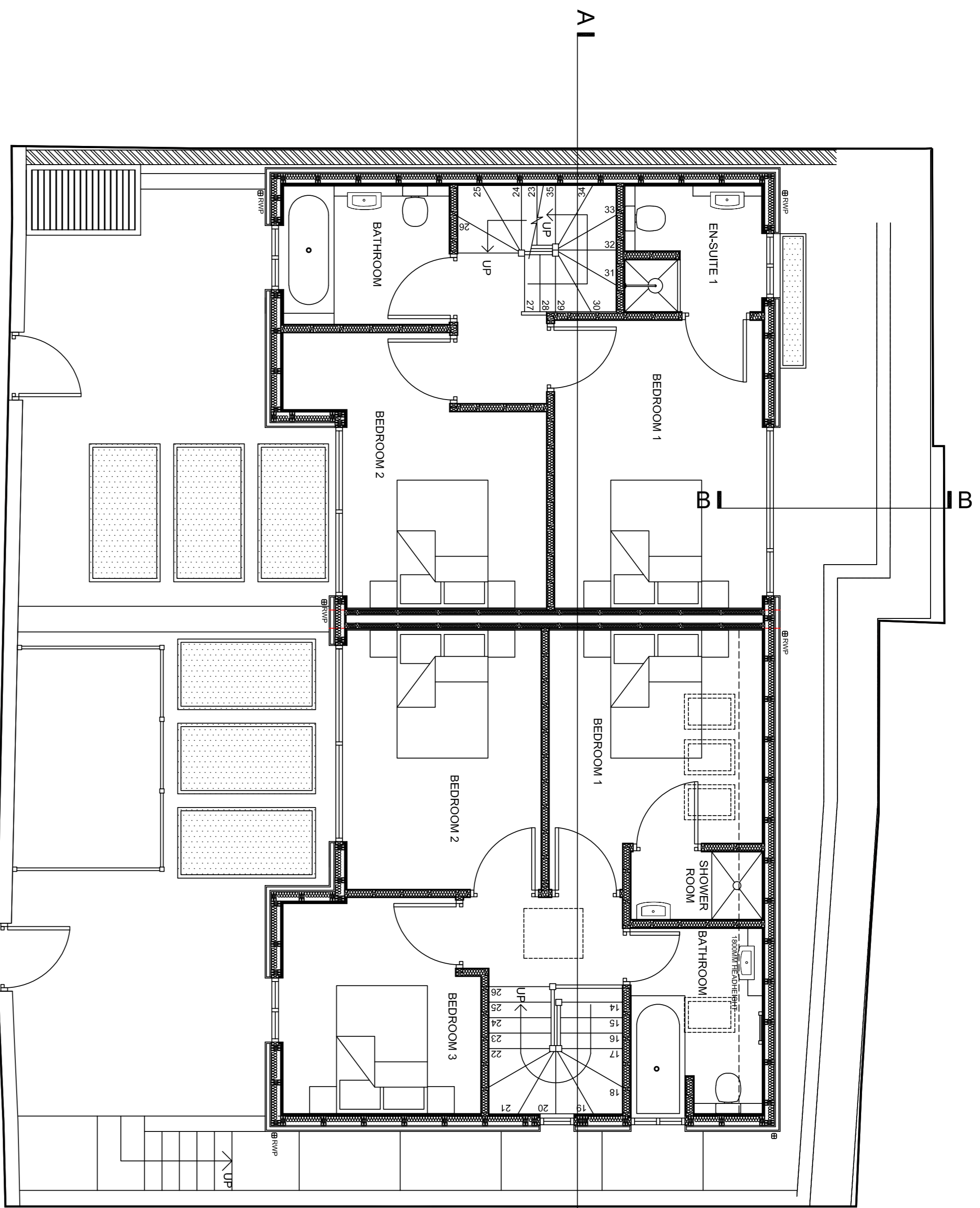
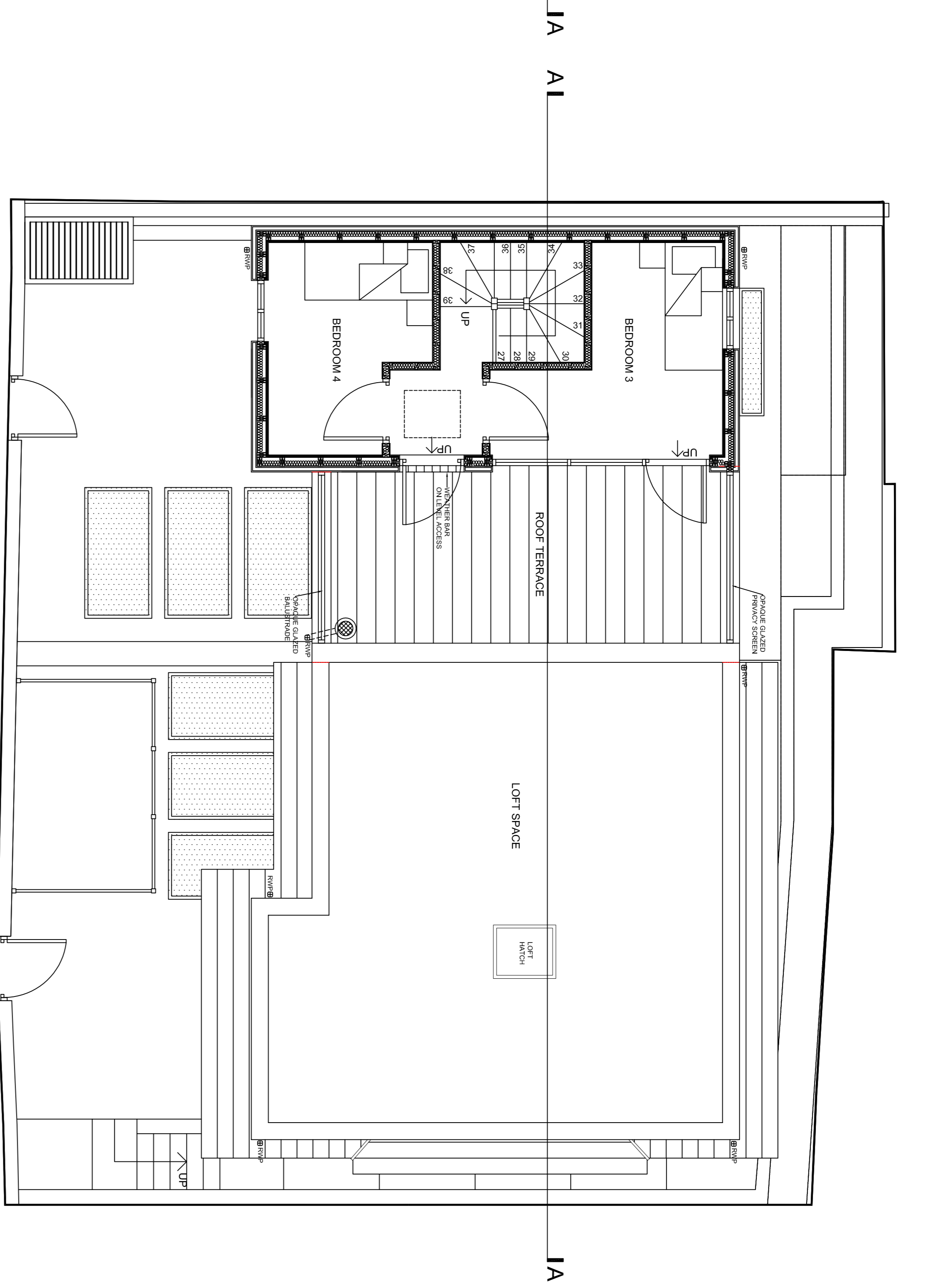


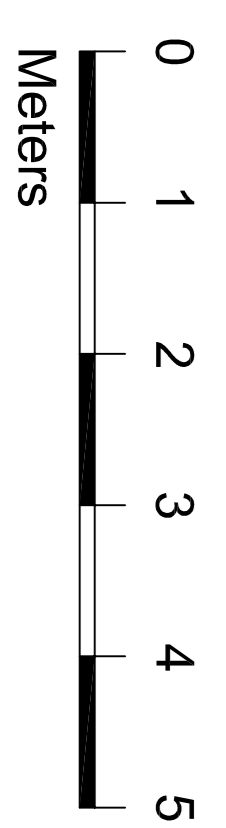
DO NOT SCALE FROM THIS DRAWING.
CONTRACTOR MUST CHECK ALL
DIMENSIONS ON SITE.
REPORT ALL DISCREPANCIES TO
ARCHITECT IMMEDIATELY.



FIRST FLOOR PLAN



SECOND FLOOR PLAN



REV. J: RM 04.01.18 AMENDED WINDOW IN BEDROOM 1 IN HOUSE NUMBER 12. TO MATCH SECTIONS & ELEVATIONS.
REV. H: RM 14.2.17 AMENDED FLOOR PLANS TO MATCH AMENDED ELEVATIONS AND SECTION AA.
REV. G: RM 11.12.17 ADDED INTERNAL LIGHTWELLS / EXTENDAL ROOM DOORS TO MATCH UPDATED GROUND LEVEL. REVISIONS AS PER CHANGERS REQUEST - EVAL DATED 07.12.17.
REV. F: RM 20.11.17 UPDATED FLOOR PLANS AFTER COMPLETING SITE SURVEY - 13.11.17.
REV. E: AS 01.06.15 HOUSE 12 PRESSER AMENDED.
REV. C: AS 02.04.15: GRID LINES AMENDED. HOUSE 12 WINDOW POSITIONS AMENDED. WEST WALL MOVED 50MM OFF BOUNDARY LINE.
REV. B: AS 13.03.15: MOVED WEST BOUNDARY LINE 300MM INTO SITE. MOVED WEST WALL 300MM AWAY FROM BOUNDARY LINE. ADJUSTED WINDOW POSITIONS. HOUSE 12 BEDROOM ONE ENTRANCE ADAPTED. BEDROOM THREE CHANGED TO SINGLE BED. GRID LINES AMENDED.
REV. A: AS 08.02.15: REMOVED MANHOLE NORTHWEST OF SITE. HOUSE 12 STAIRS MOVED 300MM CLOSER TO AT REAR. LIGHTWELL ADDED TO HOUSE 12A AT REAR. BEDROOM 3 WALL CURVED.

BUILDING REGULATIONS

Briffa Phillips
Architecture Design Planning Consultants Project Management
1824 Red Hill Hill Stables
Tel: 01727 84667
Fax: 01727 731671
www.briffaphillips.com
info@briffaphillips.com

Project Title: 21/2A WESTBERG ROAD
WEST HAMSTEAD NW2 3SR

Drawing Title:		FIRST FLOOR PLAN	
Scale:		1:50 @ A1	
Date:	15/12/2014	Project No.:	1492
Drawn by:	AS	Checked by:	AMS
Project No.:	1492	Revision:	J