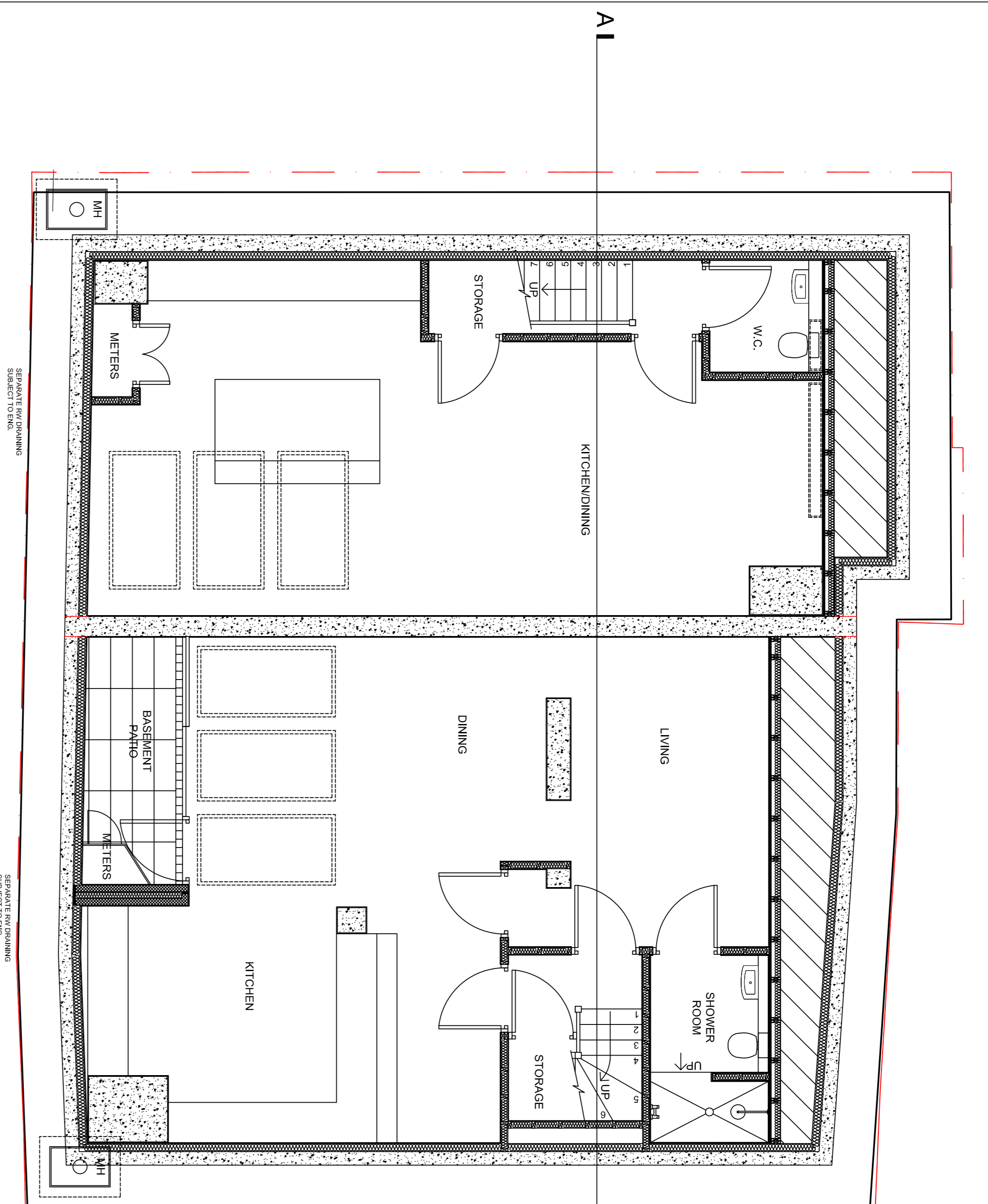
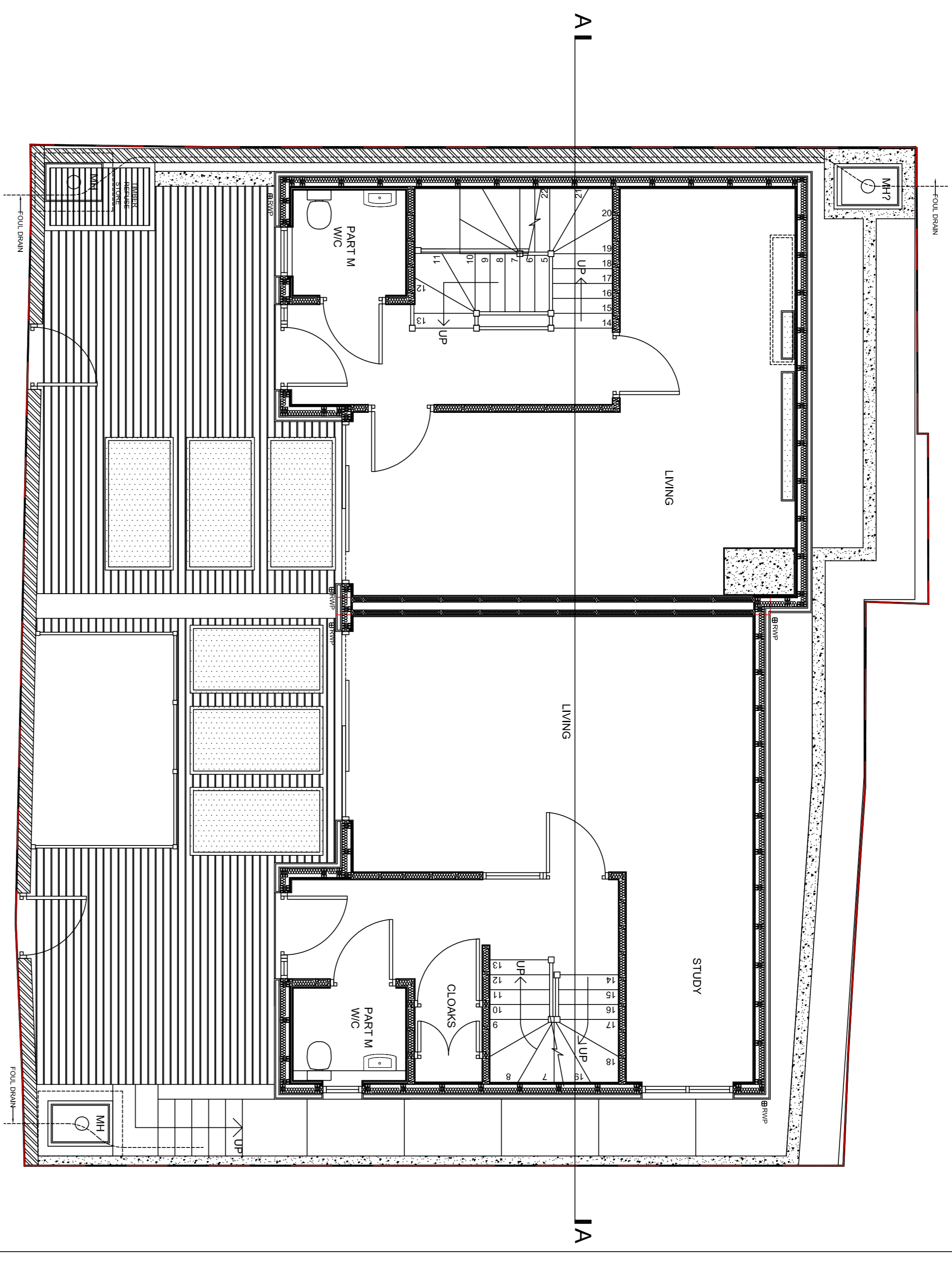


DO NOT SCALE FROM THIS DRAWING.  
CONTRACTOR MUST CHECK ALL  
DIMENSIONS ON SITE.  
REPORT ALL DISCREPANCIES TO  
ARCHITECT IMMEDIATELY.



**BASEMENT FLOOR PLAN**



**GROUND FLOOR PLAN**

REV. G. RM 14.12.17 AMENDED FLOOR PLANS TO MATCH AMENDED ELEVATIONS AND SECTION AA  
REV. F. RM 11.12.17 REMOVED RETAINING WALL & FILLING AND ADDED INTERNAL LIGHTWELLS / EXTERNAL ROOF LIGHTS AS PER PLANNERS REQUEST - EMAIL DATED 10/12/17  
REV. E. RM 20.11.17 UPDATED FLOOR PLANS AFTER COMPLETING SITE SURVEY - 13.11.17  
REV. D. RC 29.04.15 HOUSE 12 STAIRS REVISED AND LAYOUTS AMENDED ACCORDINGLY.  
REV. C. AS 08.02.15 GARDEN LINES AMENDED HOUSE 12 50MM OFF BOUNDARY LINE  
REV. B. AS 13.03.15 MOVED WEST BOUNDARY LINE 300MM INTO SITE. MOVED WEST RETAINING WALLS AND WALL 300MM AWAY FROM NEW BOUNDARY LINE. STAIRS / PART M W.C. CHANGES AMENDED REPAIRED WITH WALL GRIDLINES AMENDED BASEMENT PARTY WALL CONSTRUCTION CHANGED TO CONCRETE.  
REV. A. AS 08.02.15 REMOVED MANHOLE NORTH-WEST CORNER OF HOUSE 12. REPAIRED EXISTING MANHOLE PILES. HOUSE 12 STAIRS MOVED 300MM CLOSER TO EXTERNAL WALL. HOUSE 12 GROUND FLOOR EXTENDED AT REAR AND LIGHTWELL ADDED. LIGHTWELL ADDED TO EXTERNAL WALL.  
DRAWING STAGE

**BUILDING REGULATIONS**

**Briffa Phillips**  
Architecture Design Planning Consultants Project Management  
1824 Hollywell Hill, Strabane  
Tel: 01727 846587  
Fax: 01727 731871  
www.briffaphillips.com  
info@briffaphillips.com

Project Title: 21/22A WESTBERG ROAD  
WEST HAMSTEAD NW2 3SR

Drawing Title: <b>BASEMENT FLOOR PLAN</b>			
Drawing Title: <b>GROUND FLOOR PLAN</b>			
Scale:	Job Architect:	Drawn:	Checked:
1:50@A1	MB	AS	AMS
Date:	Project no.:	Drawing no.:	Revision:
15/12/2014	1492	301	G

