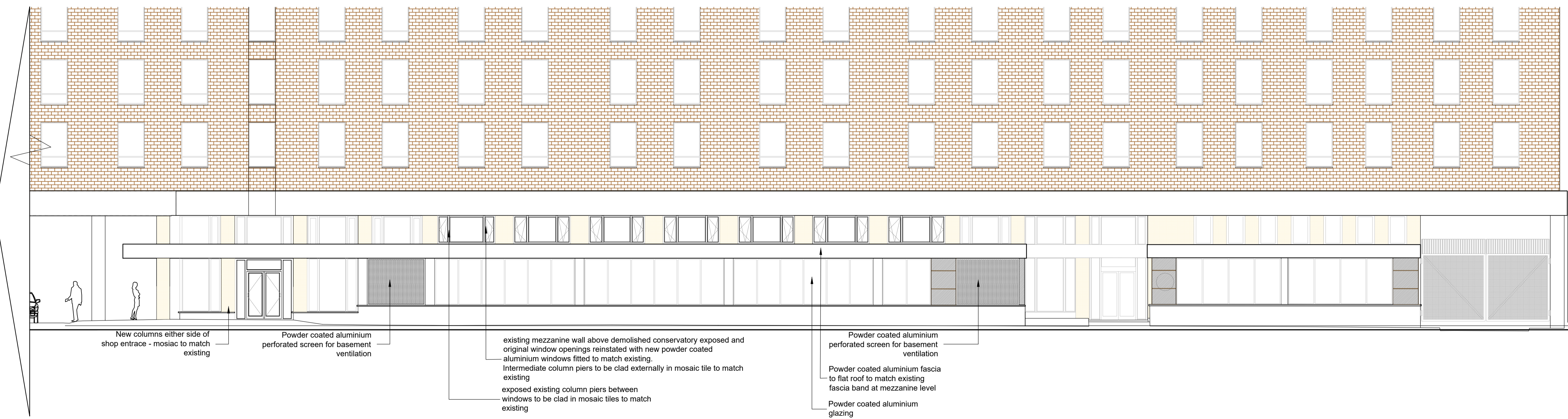


1 BEDFORD WAY ELEVATION (NORTH END) Scale: 1:100 @ A1



2 BEDFORD WAY ELEVATION (SOUTH END) Scale: 1:100 @ A1

05	08.01.2018	revise window arrangement - revert to original window rhythm as per existing
04	30.11.2017	Revise window sizes Reduce aluminium cladding Omit openers
03	21.11.2017	Add window openings
02	29.09.2017	Omit shadows
01	01.08.17 PSZ	Revise structure around basement vents Extend corner retail unit
00	01.08.17 PSZ	Issued for comment
rev	amendments	date by

architects
ipa
55 Kingstown Street
London NW1 8JP
T + 44 (0) 20 7436 1133
W ipa-architects.com

Project
ROYAL NATIONAL HOTEL
38-51 BEDFORD WAY
LONDON
WC1H 0JX

Drawing Title

WEST ELEVATION
BEDFORD WAY

Drawing Status
PROPOSED

Date	01/08/17	Drawn by	PSZ
Scale	A1 @ 1:100	A3 @ 1:200	
Drawing No.	17H3.LO.2000	Rev	05
Cad File	17H3.LO.1000		
© IPA Architects: All rights reserved.			